



Wire Balustrade Kit Q

Key Benefits

- ✓ Matches kit H
- ✓ Great for hardwood posts
- ✓ Self-adjusts to any angle
- ✓ Slimline

Maximum Run Span

10 Metres

About This Kit

Metal Posts



✗ Not Suitable

Timber Posts



✓ Suitable

Horizontal Balustrade



✓ Suitable

Angled Balustrade



✓ Suitable

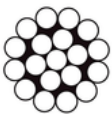
Post Material

This kit is only suitable for timber posts.

Post Type

This kit is suitable for both horizontal & angled balustrade.

1x19 Wire



✓ Suitable

7 x 7 Wire



✓ Suitable

Wire Type

This kit can be used with any wire.

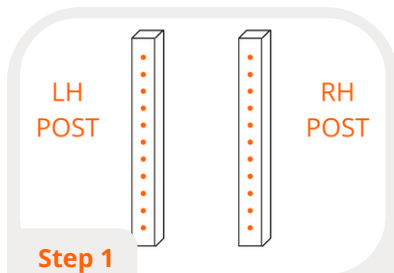
Wire Balustrade Kit Q



Tools Required



Instructions

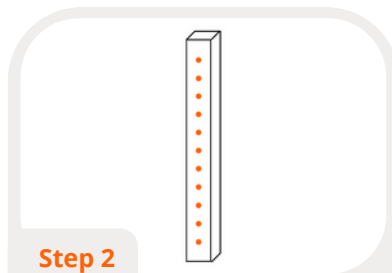


Step 1

Mark RH & LH Posts

Draw out a map of your end posts & decide which will take left-hand inserts, and which will take right-hand inserts.

There should be one right-hand post, and one left-hand post per run.



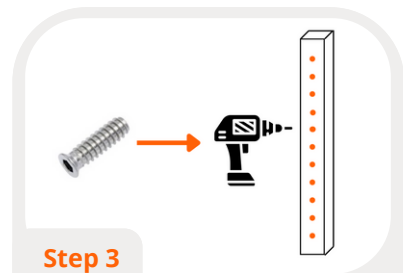
Step 2

Pre Drill Holes

Mark out and pre-drill holes on all end and intermediate posts. 80mm spacing is recommended.

Recommended hole size:

- 7.5mm for end posts
- 4mm for intermediate posts



Step 3

Install Inserts

Insert all left and right-hand inserts into their respective posts using a 6mm hex drive bit & electric drill.

Then, insert the swivel connectors.

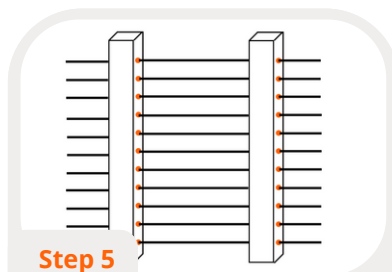


Step 4

Crimp RH threads

Crimp the wire into the right-hand fitting, then screw it into the matching swivel connector.

Do not screw it in fully, just enough to hold the wire in place!

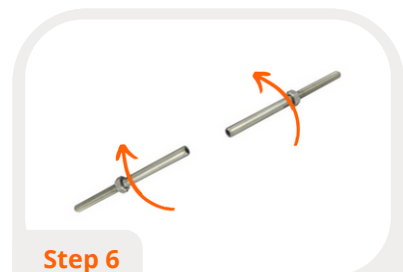


Step 5

Pass Wire Through & Repeat

Pass the wire through the intermediate posts and then repeat step 4 with your left hand threads.

Do not screw them in fully, just enough to hold the wire in place!



Step 6

Tension Wire

Tension the wires by rotating the left and right hand lag screws/swivels (in the same direction) at the same time.

Lock the system in place by tightening the hex nuts against the head of the threaded inserts

***You will need two people for this part of the job!*