

# SilverRocket PORSCHE 718 Cayman GT4 RS Performance Kit Installation Manual

## SR GT4 3-inch Swan Neck Wing Riser & Clubsport Rear Wing



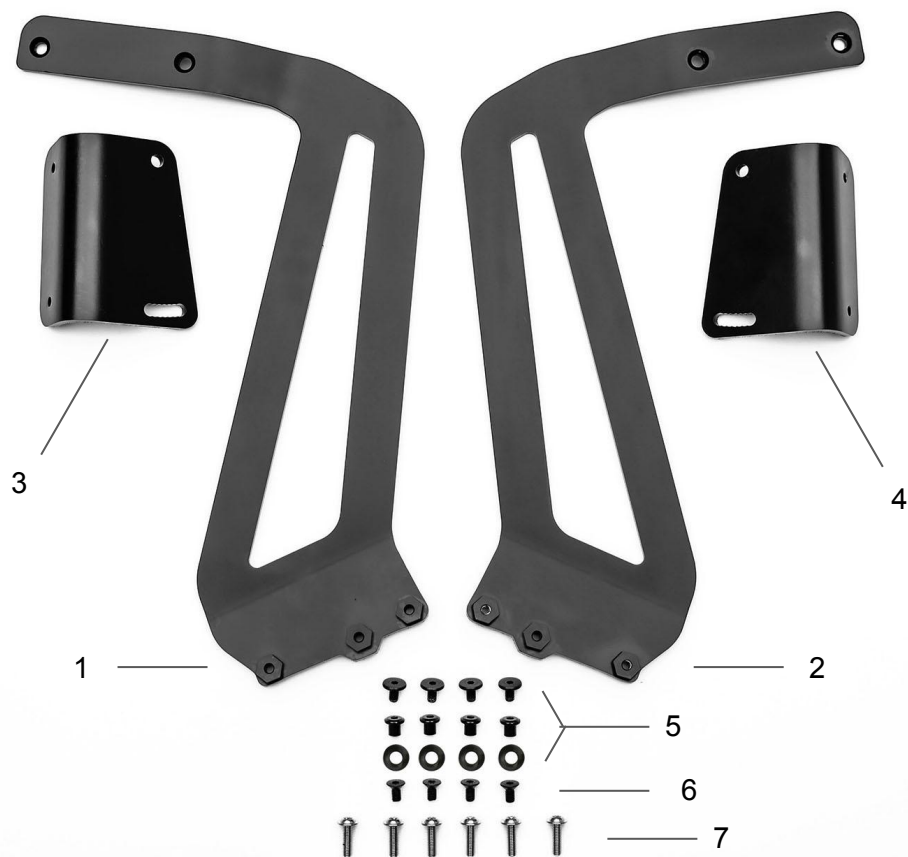
## Note

---

This installation manual describes the installation process for the SR GT4 3-Inch Swan Neck Wing Riser and the Carbon Fiber Clubsport Rear Wing. It is intended for customers who have purchased both accessories.

If you have only purchased the SR GT4 3-Inch Swan Neck Wing Riser for use with the OEM GT4/RS Clubsport rear wing, you can follow the same instructions down below.

## Kit Content List(GT4 3-Inch Swan Neck Wing Riser)

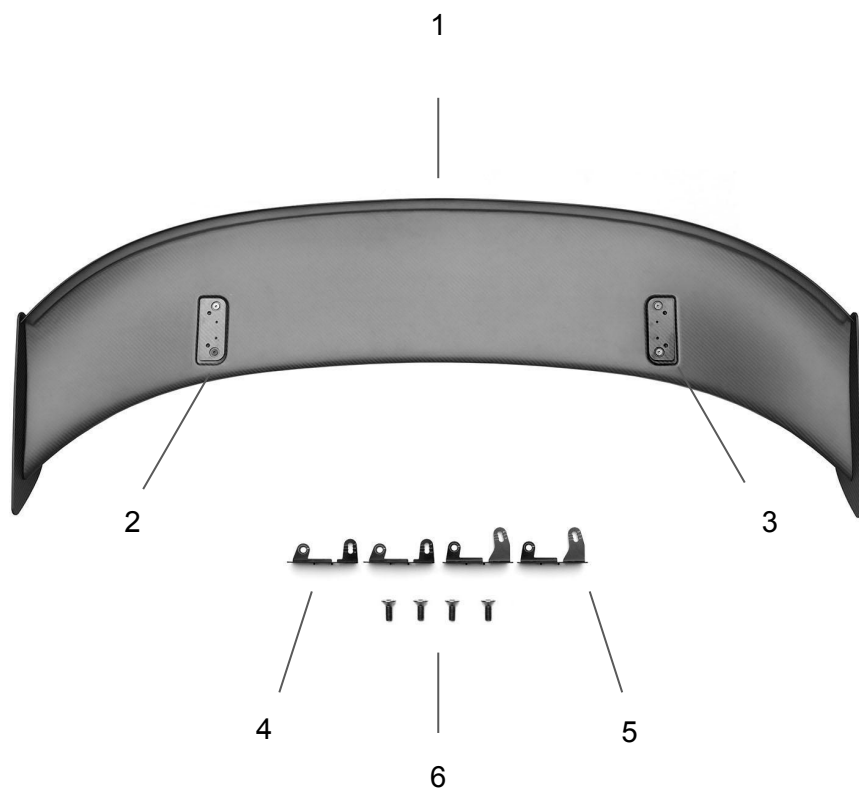


SR GT4 3-inch Swan Neck Wing Riser Kit includes :

1. SR GT4 3-inch Swan Neck Wing Riser - Left x1
2. SR GT4 3-inch Swan Neck Wing Riser - Right x1
3. L-Mount - Left x1
4. L-Mount - Right x1
5. Rear Wing connecting Screws, Nuts & Washers - x4
6. L-Mount Screws x4
7. Riser Screws x6

## Kit Content List(SR Clubsport Carbon Fiber Rear Wing)

---



SR Dry Carbon Fiber Clubsport Rear Wing Kit includes :

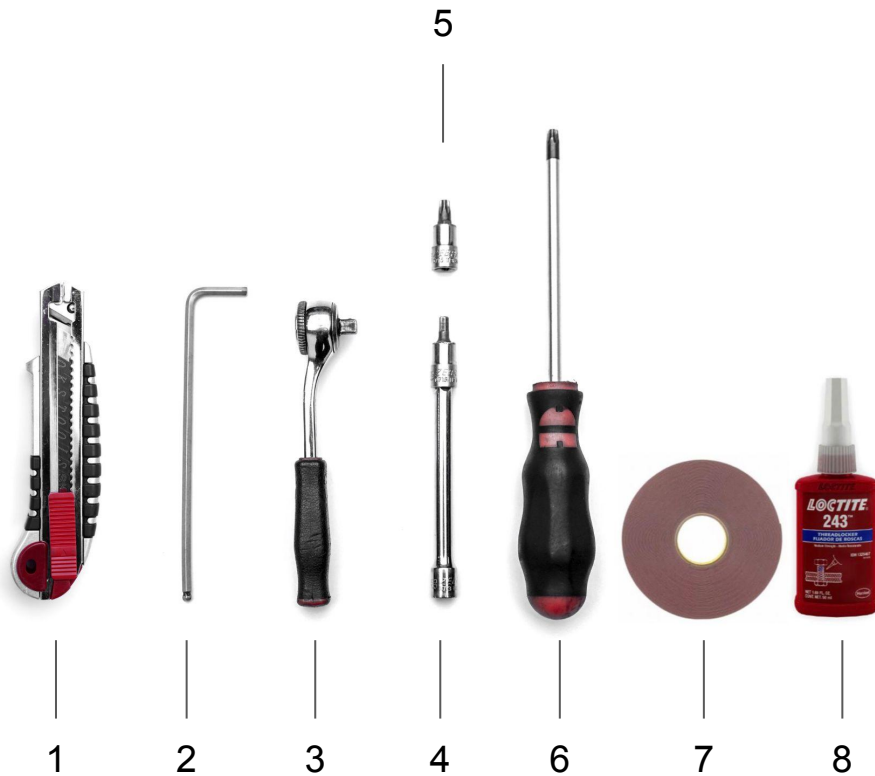
1. SR Dry Carbon Fiber Clubsport Rear Wing x1
2. Carbon Fiber Plate - Right x1
3. Carbon Fiber Plate - Left x1
4. Low AOA mount x2
5. High AOA mount x2
6. Connecting Screws x4

Note:

Items 2 to 6 are intended for installing rear wing on the GT4 RS. Please skip those parts for the GT4 risers.

## Tools Needed

---



1. Utility knife or pry bar
2. L-shaped hex wrench
3. 3/8-inch ratchet wrench
4. 3/8-inch short extension bar + 3/8-inch Torx hexalobular socket
5. 3/8-inch hex socket
6. Torx screwdriver
7. 3M tape
8. Medium Strength Threadlocker

## Remove Stock Rear Wing

---

1. Use a torx screwdriver to remove the screws at the connection between the rear wing and the original rear wing bracket. Note: An extra person is needed to support the rear wing to prevent it from falling.
2. Remove the rear wing from the bracket.



Note: This is an example of disassembling the GT4 Clubsport original rear wing. The GT4 model can be disassembled according to standard process.

## Remove Stock Wing Bracket

---

1. Open the trunk.
2. Use a 3/8 short extension bar and a 3/8 torx hexalobular socket to remove the three screws on the outside of the rear wing bracket.



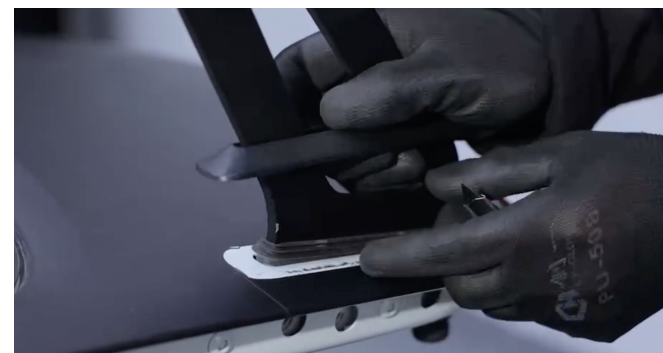
## Remove Stock Wing Bracket

---

1. Use a utility knife to scrape off the rubber covers on the two sides of the rear wing bracket slots, and slowly remove the rubber strips and covers.



2. Remove the rear wing bracket together with the bracket slot rubber covers.



Note: This is an example of disassembling the GT4 Clubsport original rear wing bracket. The GT4 model can be disassembled according to standard processes.





## Switch to SR GT4 Swan Neck Wing Riser

---

1. Insert the SR GT4 Swan Neck Wing riser to the bracket slot.



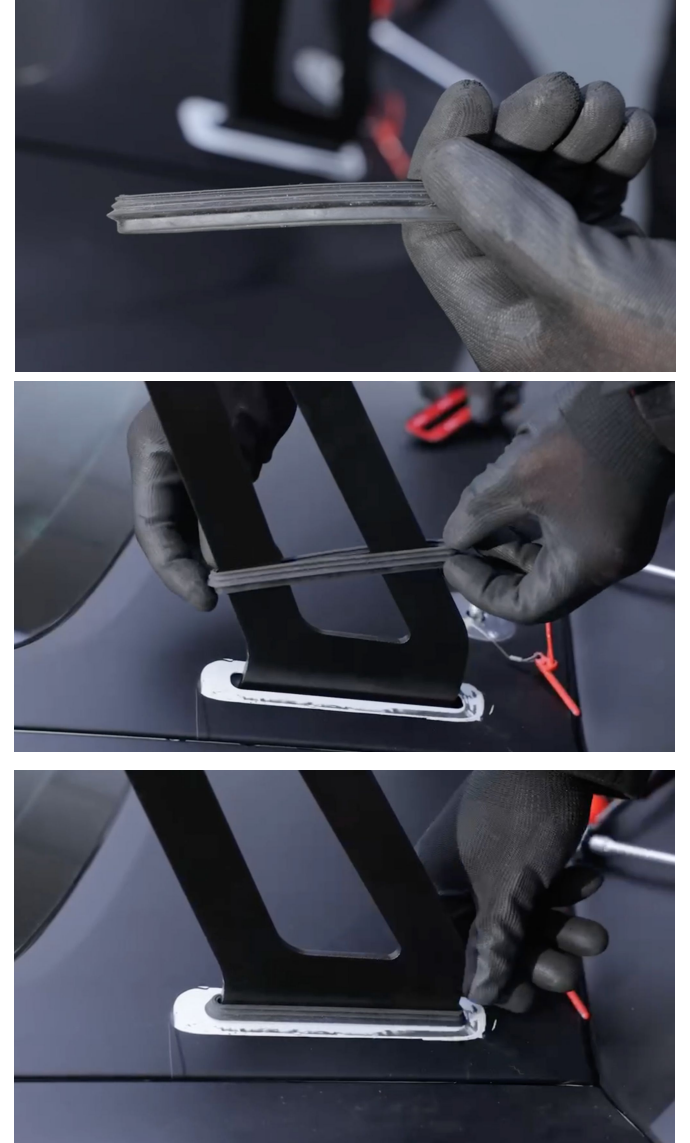
## Tighten the Wing Riser Screws

1. Apply medium-strength threadlocker to the 6 wing riser screws provided in the kit, then use a torx screwdriver to install them into the mounting holes, but do not tighten them.
2. After all the screws are in the mounting holes, use a 3/8 ratchet wrench with a 3/8 short extension bar and a torx socket to tighten them one by one.
3. Use the same method to complete the installation on the other side.



## Insert the Rubber Strip back

1. Insert the bracket slot rubber strip from above the rear wing riser and install them back into the bracket slots.



## Insert the Rubber Cover back

1. Apply 3M tape to the back of the slot rubber cover, insert it from above the rear wing riser and install them back into the bracket slot, press and tighten by hand.
2. Use the same method to complete the installation on the other side, the installation of the SR GT4 Swan Neck Wing Riser is complete.



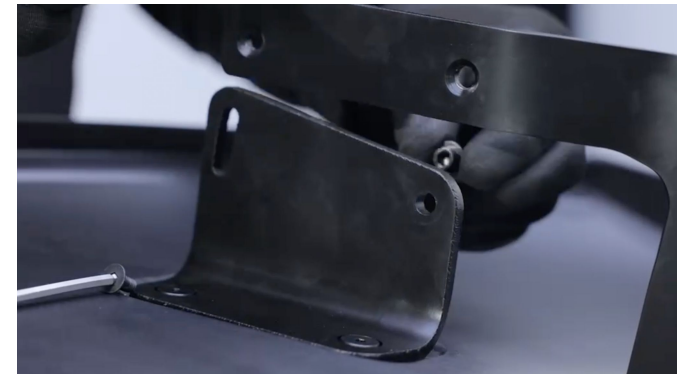
## Switch to SR Dry Carbon Fiber Clubsport Rear Wing

1. Install the L-Mount plate provided in the wing riser kit into the corresponding mounting slots on the carbon fiber rear wing.
2. Apply medium-strength threadlocker to the L-Mount connecting screws provided in the kit, and use an L-shaped hex wrench to screw them into the mounting holes, but do not tighten them.
3. After both screws are screwed into the mounting holes, use a 3/8 ratchet wrench with a 3/8 short extension bar and a torx socket to tighten them one by one.



## Install the Clubsport Rear Wing

1. Install the clubsport rear wing into the rear wing riser (it is recommended that two people do this at the same time)
2. Insert the Rear Wing Connecting Nuts and Washers provided in the kit into the inner opening of the L-Mount plate



## Connecting Rear Wing to the Wing Riser

---

1. Align the mounting holes of the L-Mount with the mounting holes of the rear wing riser.
2. Apply medium-strength threadlocker to the Rear Wing Connecting screws provided in the kit, and use an L-shaped hex wrench to install them into the aligned holes of the rear wing riser and L-Mount.



## Adjust Angle of Attack

---

1. SR GT4 Swan Neck Wing Riser supports 7 different AOA settings just like the Porsche GT4/RS Clubsport.



2. Use an L-shaped hex wrench to install the remaining Rear Wing Connecting Nuts and Washers provided in the kit into the desired position of the outer opening of the L-Mount plate.





## Complete the installation

---

1. Align the mounting holes of the rear wing riser with the mounting holes of the L-Mount. Apply medium-strength threadlocker to the Rear Wing Connecting screws provided in the kit, and use an L-shaped hex wrench to install them into the aligned holes of the rear wing riser and L-Mount.
2. Use the same method to complete the installation on the other side.
3. SR GT4 Swan Neck Wing Riser and Dry Carbon Fiber Clubsport Rear Wing installation is complete, ENJOY!



# SilverRocket PORSCHE 718 Cayman GT4 RS Performance Kit Installation Manual

## SR GT4 3-inch Swan Neck Wing Riser & Clubsport Rear Wing

