

PORSCHE 718 Cayman GT4 RS KW&SR Performance Kit Installation Manual

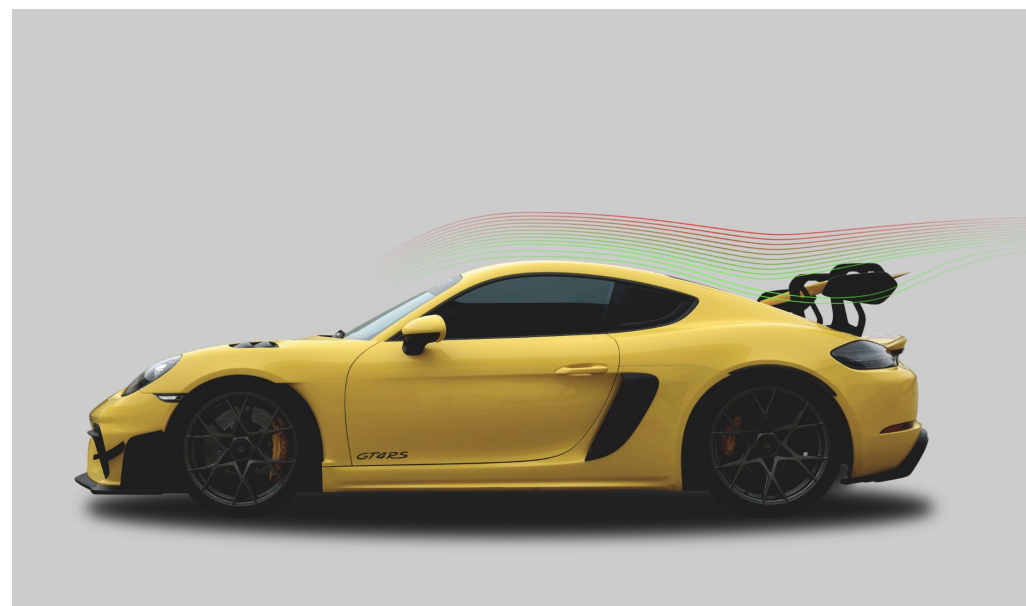
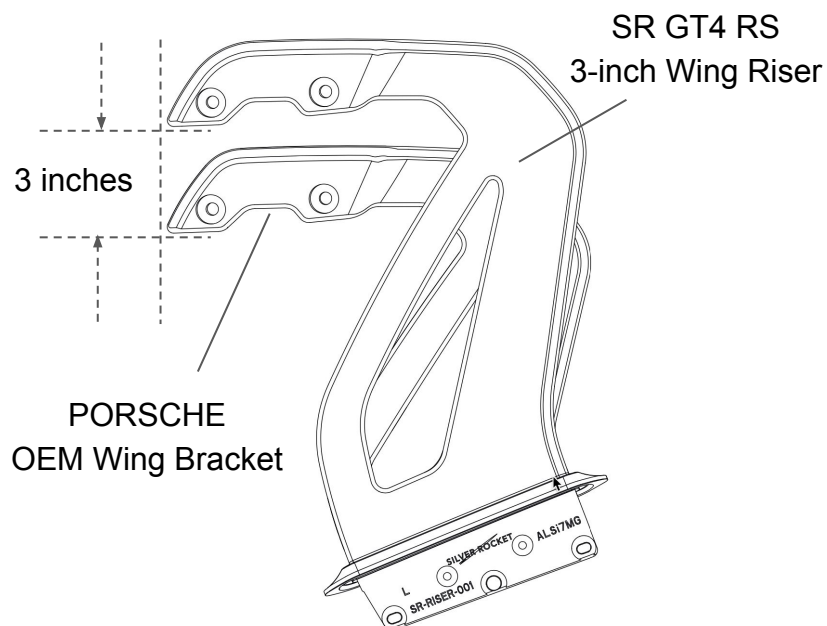
10 SR GT4 RS 3-inch Wing Riser (OEM Aluminium Casting)



Introduction

The SR GT4 RS 3-inch Wing Riser is a market-exclusive aerodynamic component developed by the SilverRocket racing team based on our years of experience competing in official Porsche events, as well as the expertise we got in collaboration with world-class racing parts brands such as Manthey Racing and KW. It is the only product in the market that is manufactured entirely according to Porsche's original factory processes and is specifically tailored for the Porsche 718 GT4 RS.

The SR GT4 RS 3-inch Wing Riser aims to optimize the rear wing downforce by raising the factory wing by 3 inches, further improving the car's racing performance. Additionally, it improves rear view visibility to ensure that the driver's overall rear view vision, particularly in high-pressure track environments, is not obstructed by the wing, significantly enhancing driving safety.



Why do we use AlSi7Mg Alloy Casting to make our wing riser as Porsche does?

The SR GT4 RS 3-inch Wing Riser is the only product available on the market that is 100% customized for the Porsche 718 GT4 RS model and utilizes the exact same manufacturing process (casting) and material (AlSi7Mg Alloy, an aerospace-grade aluminum alloy) as the original factory OEM wing bracket.

Our manufacturing process guarantees identical quality and material texture to the OEM wing bracket, providing excellent strength and durability. Furthermore, due to the precision of the integrated casting process, our wing riser seamlessly integrates with the original vehicle, requiring no drilling or modifications to the car.



Use Porsche's Identical
Integrated Casting Process



Same Quality & Texture
as OEM part

Kit Content List



SR GT4 RS 3-Inch Wing Riser Kit Includes:

1. SR GT4 RS 3-Inch Wing Riser - Left x1
2. SR GT4 RS 3-Inch Wing Riser - Right x1
3. Connecting Screws x4

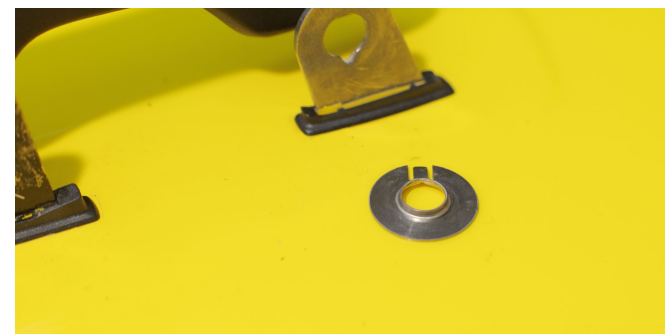
Installation Tools Needed



1. WD-40 Lubricant
2. Flathead Screwdriver
3. 3/8 Ratchet Wrench
4. 1/4 Ratchet Wrench
5. Extension Bar
6. T30 Socket x2
7. 3M Tape
8. Medium Strength Threadlocker
9. Pry Bar x2
10. Magnetic Pick-up Tool

Remove Wing from OEM Bracket

1. Use a 1/4 ratchet wrench with a T30 socket and a 3/8 ratchet wrench with a T30 socket to remove the screws connecting the wing to the factory wing bracket (Note: It is recommended to have someone hold the wing to prevent it from falling).
2. Remove the wing and the spacer (make sure to keep the spacer for future installation).



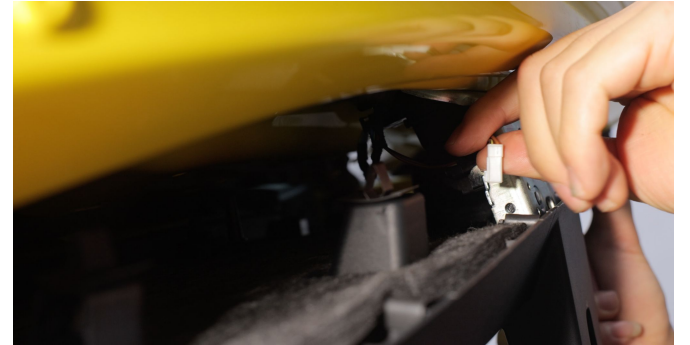
Remove Small Decorative Cover

1. Open the rear cover.
2. Using a flathead screwdriver, remove the small decorative cover beneath the large decorative cover.
3. Using a T30 socket, an extension bar, and a 3/8 ratchet wrench, remove the two screws inside the small decorative cover.



Remove Large Decorative Cover

1. Use a pry bar to loosen the large decorative cover.
2. Disconnect the power supply cable of the interior decorative light and remove the large decorative cover.



Remove Screws and Screw Covers

1. Use a pry bar to pry open the screw covers at the lower end of the wing bracket.
2. Using a T30 socket, an extension bar, and a 3/8 ratchet wrench, remove a total of five screws from both the inner and outer sides of the wing bracket, and use a magnetic pick-up tool to retrieve them.



Remove OEM Wing Bracket

1. Carefully and slowly remove the factory wing bracket from the wing bracket slots, being careful not to damage the rubber grommets on both sides of the wing bracket slots.



Insert SR GT4 RS 3-Inch Wing Riser

1. Apply WD-40 lubricant to the wing bracket slots and carefully insert the SR GT4 RS 3-Inch Wing Riser.



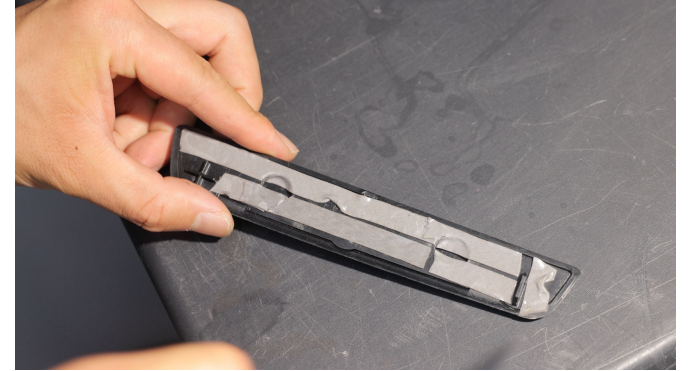
Tighten Wing Riser Screws

1. Apply medium strength threadlocker to the factory screws.
2. Using a 3/8 ratchet wrench, an extension bar, and a T30 socket, install the five screws back into the respective holes on both the inner and outer sides of the wing bracket, but do not tighten them.
3. Once all the screws are in place, tighten them one by one.
4. Repeat the same process for the installation on the other side.



Reinstall Screw Covers

1. Apply 3M tape on the inner side of the screw covers.

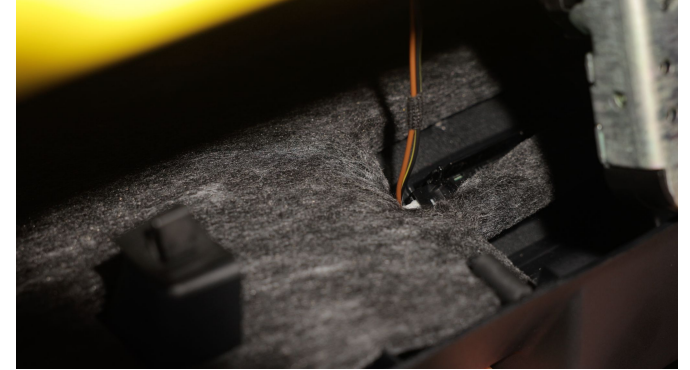


2. Reattach the screw covers on both sides, and close the rear cover.



Reinstall Large Decorative Cover

1. Connect the power supply cable of the interior decorative light inside the large decorative cover and reinstall the large decorative cover.



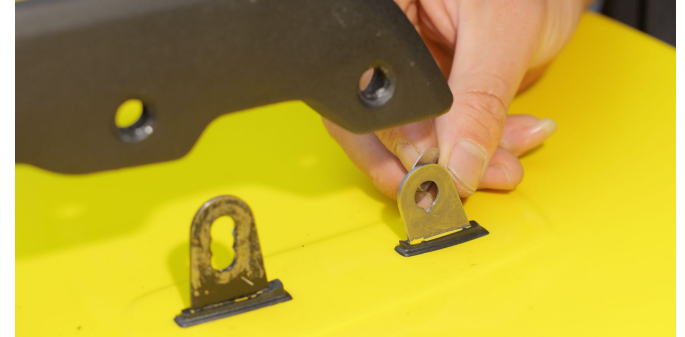
Reinstall Small Decorative Cover

1. Using a T30 socket, an extension bar, and a 3/8 ratchet wrench, tighten the two screws inside the small decorative cover.
2. Reinstall the small decorative cover.



Reinstall Wing to the Riser

1. Place the spacer back into the wing bracket installation holes, along with the wing.



Tighten Wing to the Riser

1. Apply medium strength threadlocker to the connecting screws provided in the package .
2. Using a 1/4 ratchet wrench with a T30 socket and a 3/8 ratchet wrench with a T30 socket, install the screws at the connection points between the wing and the wing riser, but do not tighten them.
3. Once all the screws are in place, tighten them one by one.
4. Repeat the same process for the installation on the other side. The installation of the SR GT4 RS 3-Inch Wing Riser is complete.



Multi-angle Installation

1. The SR GT4 RS 3-Inch Wing Riser supports three different wing installation angles using the three holes in the factory wing installation slot. You can adjust it according to your needs or preferences.



Rear Wing Lifting Showcase

Before Installation

After Installation



Rear View Visibility Enhancement Showcase

Before Installation



The wing is positioned in the middle of the rearview mirror's field of view, obstructing visibility and affecting driving performance and safety.

After Installation



By lifting the wing to the top of the rearview mirror field of view, there will be no obstruction to visibility, thus enhancing driving safety.

Installation Video

You can also watch our installation manual video for a more concise instruction.

Please go to <https://youtu.be/0rwCxvb7YDs>

Or scan the QR code below



PORSCHE 718 Cayman GT4 RS KW&SR Performance Kit Installation Manual

SR GT4 RS 3-inch Wing Riser



SILVER-ROCKET
PORSCHE RACING SPECIALIST



RECARO

MANTHEY

PORSCHE
MOTORSPORT