

# Porsche 718 Cayman GT4 RS KW&SR Performance Kit Installation Manual

## 7 SR Porsche LWB Seat Angle Adjuster



## Introduction

---

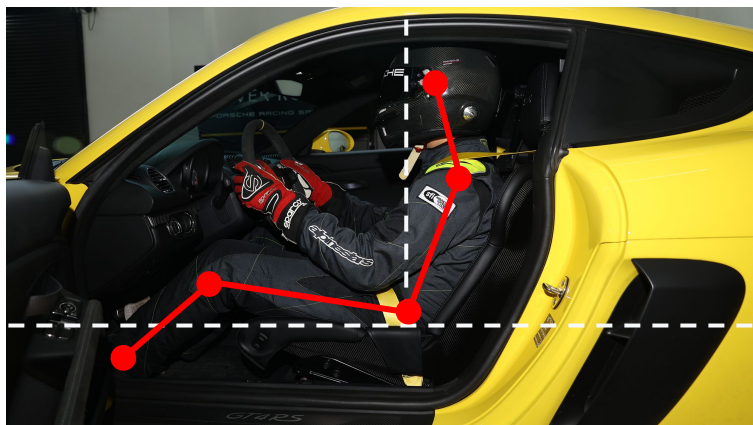
The SR Porsche LWB Seat Angle Adjuster is an optimization accessory designed by the SilverRocket racing team based on years of experience in endurance racing with Porsche race cars. It is specifically designed for Porsche's original carbon fiber bucket seats, aiming to create a comfortable sitting posture similar to Porsche race cars, allowing for a more comfortable driving experience.

SR Porsche LWB Seat Angle Adjuster can increase the backward tilt angle of the seat, solving the problem of the original upright posture that is not suitable for long-time driving, especially when the original seat angle causes discomfort in the neck due to the head being forced forward when wearing a helmet.

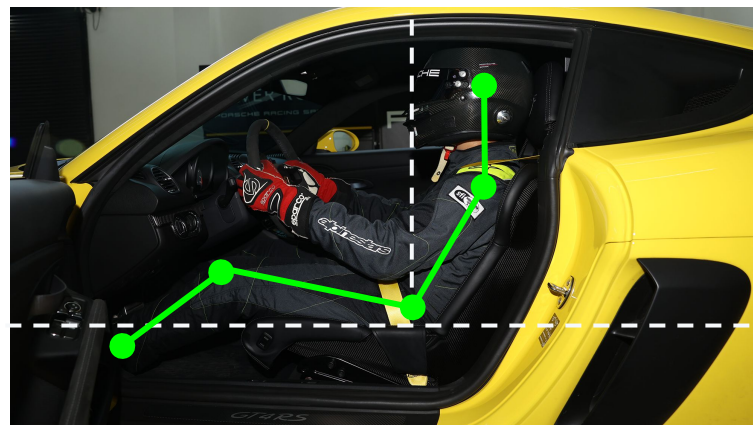
In addition, through SR's exclusive innovative design and precise production process that perfectly fits Porsche's original LWB seats, the seat height and front-back adjustment function can be retained while changing the seat angle, without damaging the seat rails.

Finally, to ensure the safety of our product in a track environment, we exclusively use ultra-high-strength TC-4 titanium alloy, which provides better reliability and safety beyond the original strength of Porsche in a track environment.

**Before Installation**



**After Installation**



## Why we use a more expensive TC-4 Titanium Alloy over Aluminum

SR Porsche LWB Seat Angle Adjuster is made of a more expensive aerospace-grade TC-4 titanium alloy, which surpasses traditional aluminum option in every aspects. Especially in high-pressure track driving, it provides over 10 times the tensile strength and yield strength of aluminum alloy which brings you a safer driving experience and better durability.

### Tensile Strength



### Yield Strength



## Kit Content List

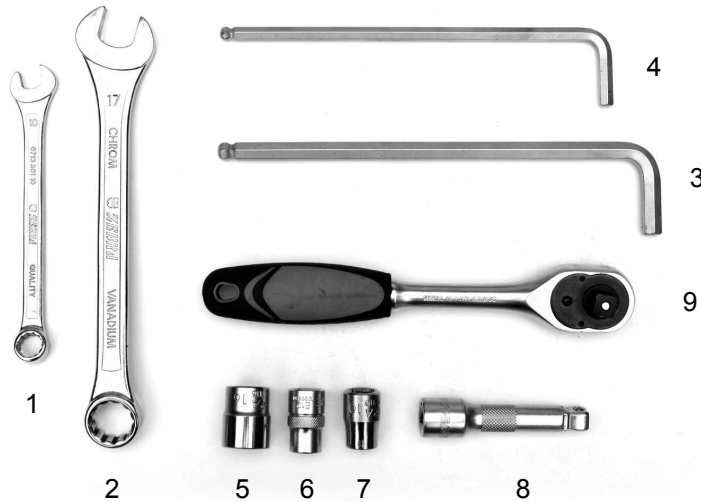
---



1. SR Porsche LWB Seat Angle Adjuster x2
2. M10 Bolts x2
3. M6 Bolts x2
4. M10 Nuts x2

## Installation Tools Needed

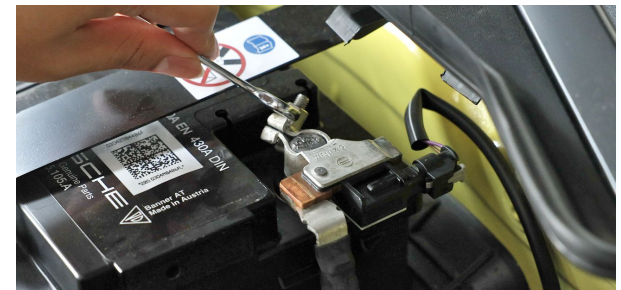
---



1. 10mm Wrench
2. 17mm Wrench
3. 8mm Allen
4. 6mm Allen
5. 16mm Socket
6. E12 Socket
7. 10mm Socket
8. Socket Extender
9. 3/8-in Ratchet

## Adjust Seat Height & Disconnect Battery

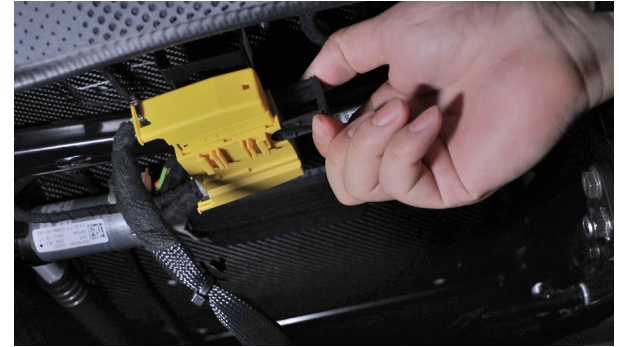
1. Adjust the seat height to the maximum using the electric adjustment button located on the outer side of the seat.
2. Remove the panel inside the engine hood to expose the battery, then use a 10mm wrench to disconnect the negative (-) terminal of the battery.



## Disconnect Yellow Plug

---

1. Detach the yellow plug underneath the seat by first pulling out on the black tab to unlock it.



## Unbolt Seat Belts & Seat Bolts

---

1. First, remove the plastic cover of the seat belt bolt, then use a 17mm wrench to remove the seat belt from the seat.



2. Use an E12 socket with 3/8-in ratchet to remove the four seat bolts on both sides of the seat rails. You can slide the seat forward and backward to have better access to the bolts.





## Remove Seat

---

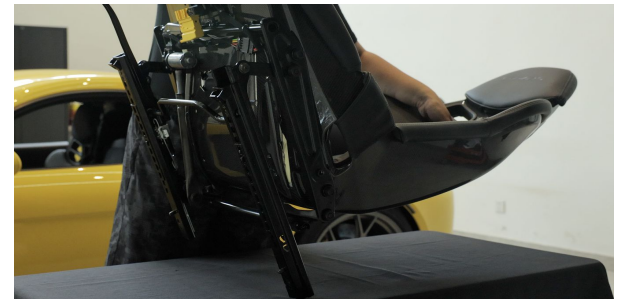
1. Put down a towel next to the seat to avoid scratching of the vehicle.



2. Carefully remove the seat.



3. Place the seat on the table and put it on its back.



## Insert the Adjuster

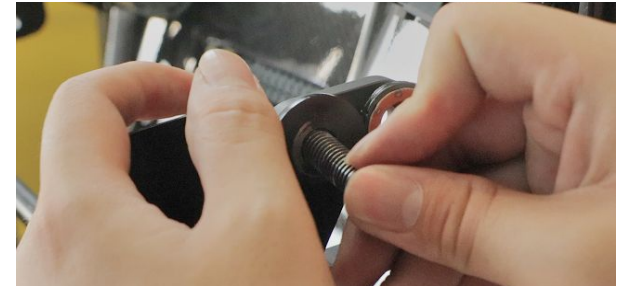
---

1. Using a 16mm socket with 3/8-in ratchet and an 8mm Allen wrench, remove the two 16mm bolts that connect the seat pivot arms to the seat rails on both sides.
2. As shown in the diagram, separate the pivot arms from the seat rails and insert the SR adjuster into the corresponding slot on the seat rails.



## Connect Adjuster

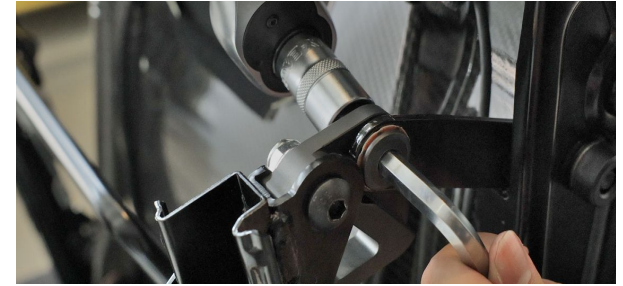
1. Align the bolt hole of the SR adjuster with the connection point on the seat rails. Insert the supplied M6 bolt through the smallest hole on the seat rail into the bracket, but do not tighten it just yet.
2. Then, insert the supplied M10 bolt through the seat rail and bracket. Secure it with an M10 nut, but do not tighten it temporarily.
3. Pull the pivot arms back to align with the connection hole of the SR adjuster and connect the two parts using the original 16mm bolts.



## Tighten All Bolts

---

1. Once three sets of bolts are in place, tighten the M6 bolt first (10mm socket with 3/8-in ratchet, 30 lbs or hand tight), and then tighten the M10 bolt (16mm socket with 3/8-in ratchet and a 6mm allen, 72 lbs or hand tight), finally, tighten the original 16mm bolt using 16mm socket with 3/8-in ratchet and a 8mm allen.
  
2. Once one side is finished, complete the other side of the seat the same way.

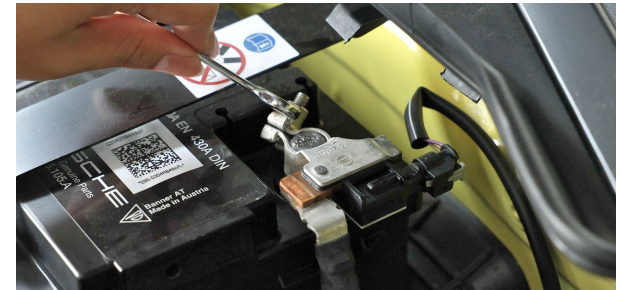


## Put Seat Back and Complete Installation

1. Reinstall the seat following the reverse steps.



2. Reconnect all the battery.



3. The installation of the SR Porsche LWB Seat Angle Adjuster is complete.



## Adjust Seat Cushion (Optional)

---

After installing the SR Porsche LWB seat angle adjuster, you may feel uncomfortable in the back of your knees due to the forward position of the lower cushion caused by the increased backward tilt angle of the seat. You can simply adjust the position of the seat cushion to solve this problem.

1. Pull up the lower cushion from the connection point between the two cushions.
2. Pull the lower cushion backward to your desired position (with about 2 cm of adjustable space)



## Adjust Seat Cushion (Optional)

---

1. Pull out the rear cushion and insert the lower cushion underneath. and press down on the rear cushion.
2. Press down on the rear cushion to finish the adjustment.

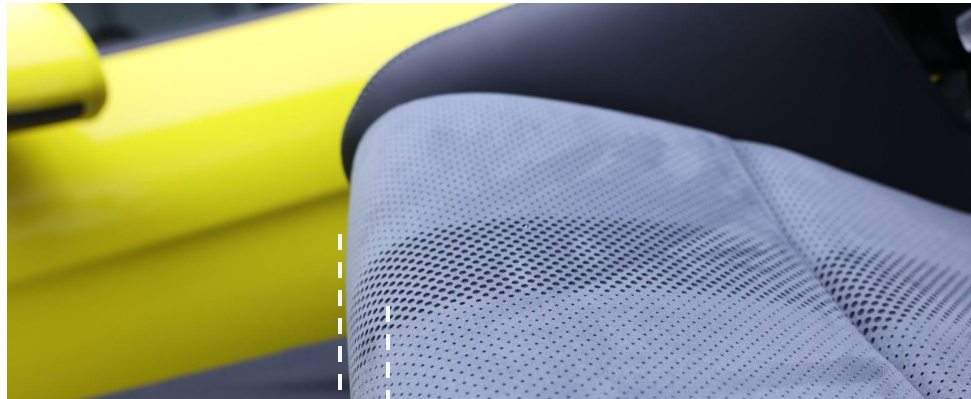


## Adjust Seat Cushion (Optional)

---

After adjusting, you will gain up to an additional 2 cm of legroom, completely solving any potential discomfort behind your knees.

OEM Original Cushion Position



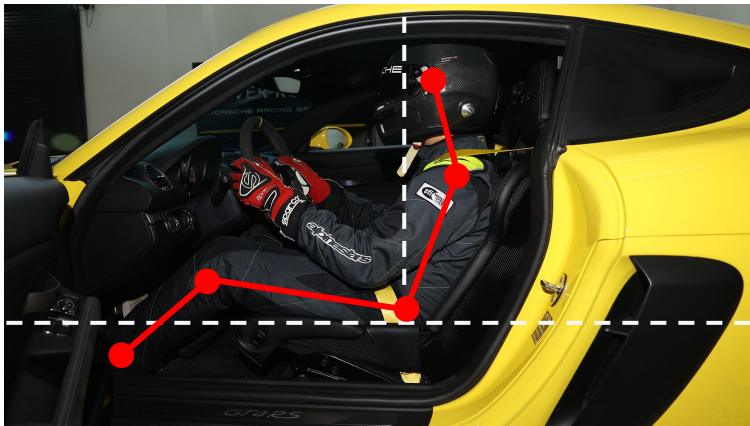
Cushion Position after Pulling Back





## Result Showcase

### Before Installation

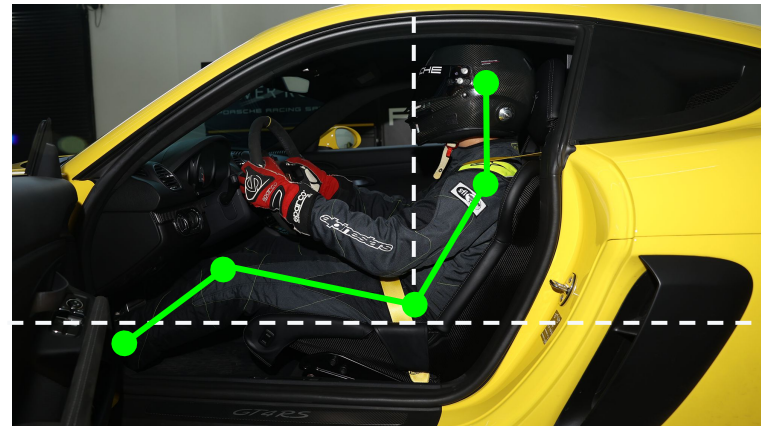


Tight & unnatural sitting posture

Neck being forced to bend forward when wearing a helmet.

Downward line of sight

### After Installation



A more natural sitting posture

Enough head space for comfort even with helmet on

A leveled line of sight

## Installation Video

---

**You can also watch our installation manual video for a more concise instruction.**

Please go to <https://youtu.be/ZanXRfmw26w>

Or scan the QR code below



# Porsche 718 Cayman GT4 RS KW&SR Performance Kit Installation Manual

## SR Porsche LWB Seat Angle Adjuster

