

1080P

STARVIS 2

60 FPS

130dB
63.7 dig
LVDS

NEW

FHD BLOCK CAMERA

FCB-EV9520L

STARVIS
NEXT GENERATION

COMING SOON



30x
1/2.8"

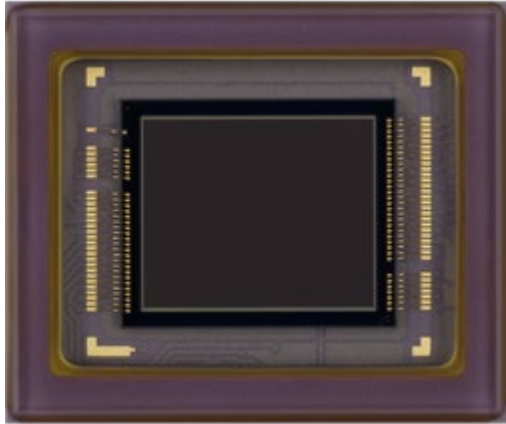
ZOOM

FCB-EV9520L Overview

- **New 1/3” FCB Block successor camera for FCB-EV7520/A**
- **Convenient migration & upgraded product line of 1/2.8”**
- **Designed for Surveillance, Medical, Off-line inspection equipment and added values applications/markets for general inspections and monitoring**

FCB-EV9520L with Starvis2 Technology

- IMX-662 (new Sony sensor for security market)



1/2.8

" 16:9

2 MP

STARVIS 2

High sensitivity
(day/night)

FCB-EV9520L Spec Comparison

		FCB-EV7520 FCB-EV7520A	Sony Sony New FCB-EV9520L
Imager		1/2.8"2M STARVIS	1/2.8" 2M
Output		1080 60p	STARVIS2 1080 60p
Min	ICR	0.1lx	Better than 7520/A
Illumination*	OFF	0.006lx	Better than 7520/A
Min	ICR ON	130dB	130dB
Illumination*		30x	30x
WDR		63.7deg	63.7deg
Optical zoom		EIS	Super Stabilizer (Super/Super+)
H FOV			
Boresight		-	Yes
EIS			
correction	Spot	-	Yes
Focus/AE/AWB	ICR	-	Yes
ON COLOR		3.2W when motor operates 4.0W	4.4W (Tentative) when motor operates 5.2W
Power consumption			
I/F		LVDS, CVBS	LVDS
Size		50 x 60 x 89.7 mm	50 x 60 x 89.7 mm

Image Sensor Improved

	IMX291/290 in FCB-EV7520/A	IMX662 in new FCB-EV9520L
Optical size	1/2.8"	1/2.8"
Number of recording pixels	1920 x 1080	1920 x 1080
Pixel size	2.9um	2.9um
Pixel Gen.	STARVIS	STARVIS 2
SNR1s	0.23lx	0.18lx
Quantum Efficiency @850nm	30%	51%

1.6x

Conventional STARVIS



STARVIS2 NIR Improved

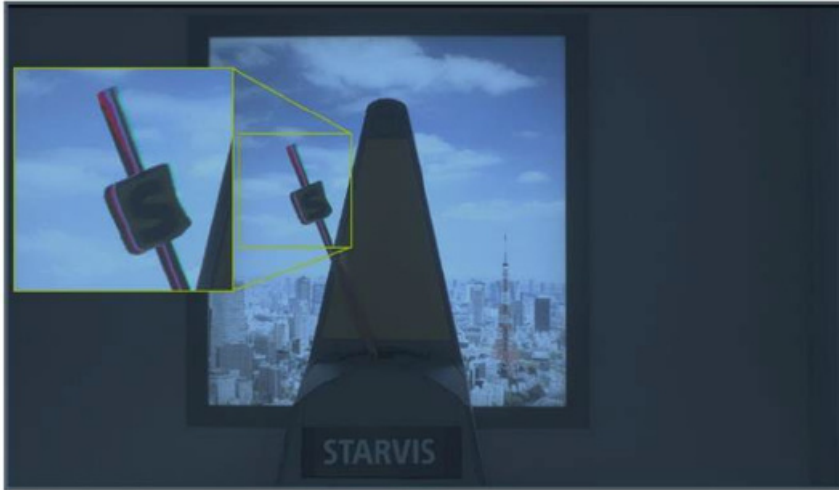


条件：F=1.6, Exp.=33.3msec, Gain=0dB, 850 nm

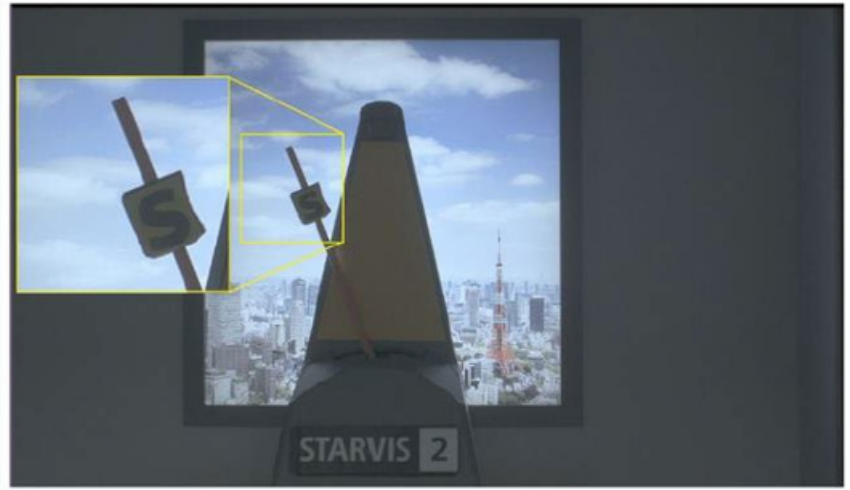
Local tone mapping HDR



Clear HDR



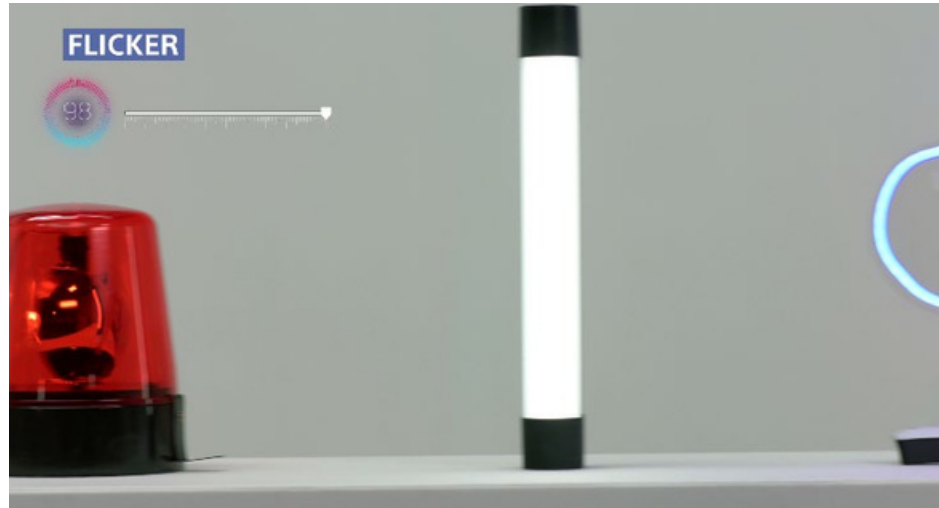
Conventional: DOL HDR



IMX662: Clear HDR

Available by firmware upgrade

Automatic 50/60Hz detection



Can we not use our video material?

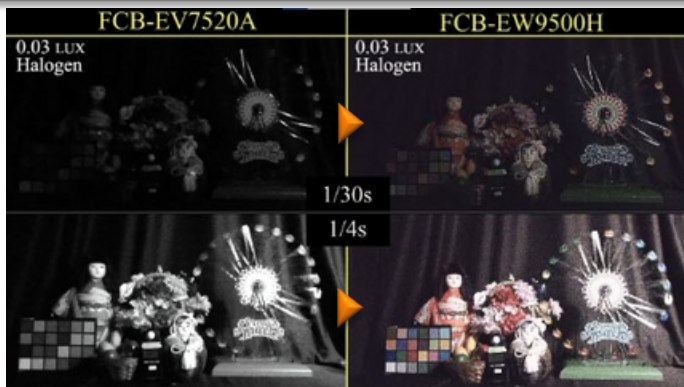
Rolling shutter compensation



Can we not use our video material?

Inherited Functions from FCB-9500 Series

ICR ON COLOR

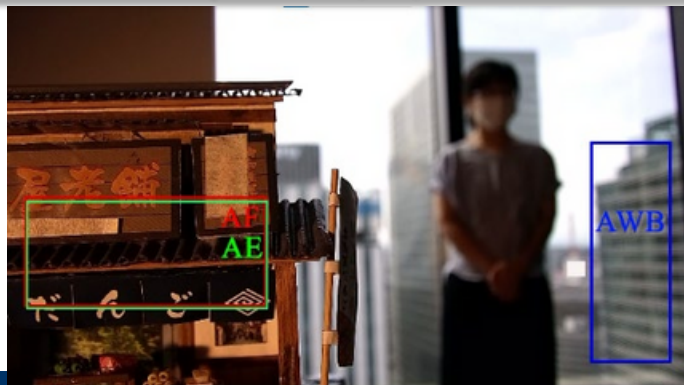


Super/Super+ Stabilizer

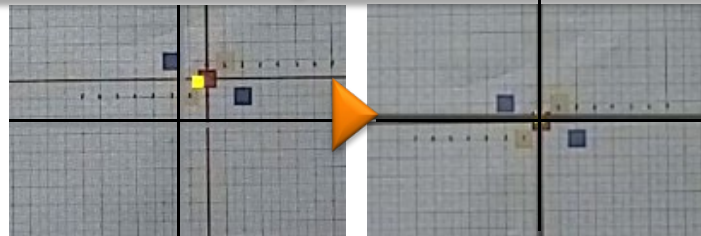


Wide correction area
Swinging in roll direction supported

Spot Focus/AE/AWB



Boresight Correction



When this function is enabled,
FOV will be narrower in the new FCB