

# MC-S038B

2MP High Sensitivity 3x Zoom Module

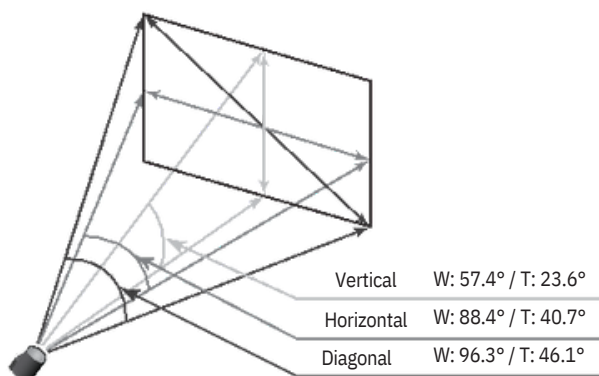
HD-SDI EX-SDI HD-TVI CVBS



## Features

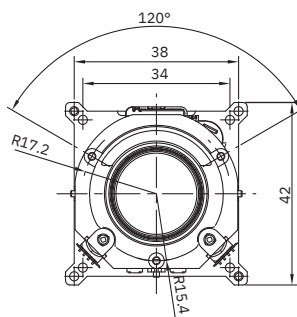
- 1/1.9" 2MP Sony CMOS sensor
- 1080p 60fps/30fps, 720p 60fps/30fps
- 3x Optical Zoom(3.6mm ~10mm)  
& 32x Digital Zoom
- Day & Night(ICR)
- Wide Dynamic Range
- Digital Noise Reduction(2D+3D)
- Privacy Mask Function
- High Light Compensation
- Intelligent Motion Detection
- Defog Function
- Supports VISCA, Pelco-D/P Protocol
- Video Out : HD-SDI, EX-SDI, HD-TVI, CVBS

## Field of View

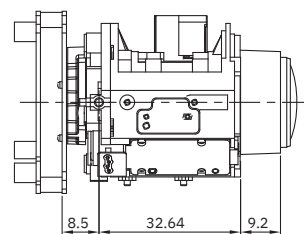


## Dimensions

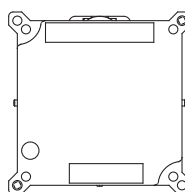
Unit : mm



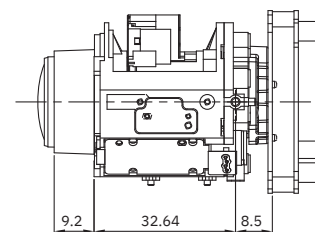
FRONT



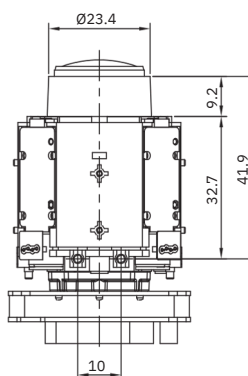
LEFT SIDE



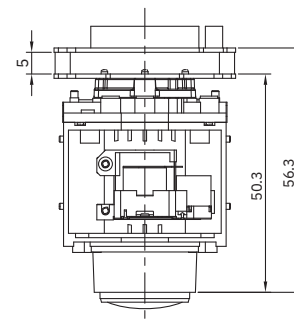
BACK



RIGHT SIDE



BOTTOM



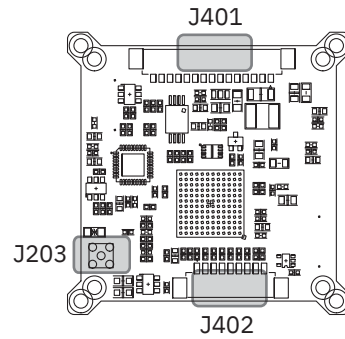
TOP

# Specifications

MC-S038B/S038B-M2	
Image Sensor	1/1.9" Sony CMOS Sensor
Total Pixels	1,952(H) x 1,241(V) = 2.42M Pixels, 1,952 (H) x 1,113 (V) = 2.17M Pixels
Active Pixels	1,937(H) x 1,097 (V) = 2.12M Pixels
Scanning System	Progressive Scan
Sync. System	Internal
Resolution	Digital : 1080p/60(50)fps, 1080p/30(25)fps, 720p/60(50)fps, 720p/30(25)fps Analog : 700TVL
Min. Illumination	Color(1/30s) : 0.15 lux , BW(1/30s) : 0.01lux Color DSS(1/7.5s) : 0.0375 lux , BW DSS(1/7.5s) : 0.002 lux
Video Output	HD : HD-SDI, EX-SDI Analog : VBS (without WDR), HD-TVI
S/N Ratio	more than 50dB(AGC off)
Lens Type	3x Day & Night Zoom Lens
Zoom Ratio	Optical 3x, Digital 32x Zoom
Focal Length	f = 3.6mm ~ 10mm
Aperture Ratio	F1.5(wide) ~ F2.7(tele)
Angle Of View(D, H, V)	Wide 96.3° 88.4° 57.4° Tele 46.1° 40.7° 23.6°
AF Mode	Auto / One Push / Manual
AF Mode	One Push / 1 ~ 10Day
Lens Refresh	Off / MAX 2x ~ 32x
Digital Zoom	Auto / Iris.P / Shut.P / Manual
Exposure	Off / On
Gain Control(AGC)	1/30(25) ~ 1/30,000 sec
Shutter Speed	0 ~ 20 steps
Iris	Off / 2x / 4x / (8x : 60 or 50 fps mode only)
Digital Slow Shutter(DSS)	0 ~ 20 steps
Brightness	Off / WDR / BLC
WDR/BLC	Auto / Day / Night / Ext-in
Day&Night	Auto / One Push / Manual / Indoor / Outdoor
White Balance	Off / On / Night Only
HLC	Auto / Off / Low / Middle / High
DNR	Off / H / V / H&V
Mirror	0 ~ 10 steps
Sharpness	Off / Low / Middle / High
ACE	Off / On(Auto / Manual)
Defog	Max. 24 Areas
Privacy Mask	Max. 3 Areas
Motion Detection	One push
Defect Detection	NTSC / PAL
System	Baud Rate : 2400 / 4800 / 9600 / 19200 / 38400 / 57600 / 115200
Communication	Protocol : VISCA / Pelco-D / Pelco- P / Update English / Simplified Chinese / Traditional Chinese / Japanese
Language	DC12V±10%
Power Source	280mA
Power Consumption	Connector
Power Input	MMCX Connector
Video Output	-20°C ~ +60°C (Humidity : 0%RH ~ 90%RH)
Storage Temperature	-10°C ~ +50°C (Humidity : 0%RH ~ 90%RH)
Operating Temperature	42(W) x 42(H) x 56.3(D)
Dimensions	58g
Weight	

\* Design and specifications are subject to change without notice.

# Pin Assignment



J401	
1DC IN	
2GND	
3VBS	
4 GPIO1	
5GND	
6 TVI-OUT	
7AD KEY	
8GND	
9 IR-ON	
10 D/N-IN	
11 GPIO2	
12 MD-OUT	
13 GND	
14 485(+)	
15 485(-)	

Ref 12505WS-15(YEONHO)

J203	
1SDO	
2GND	

Ref RF Connector - MMCX

J402	
1 JMODE	
2 JTCK	
3 JTDI	
4 JTDO	
5 JTMS	
6GND	
7RXD	
8TXD	
9+5V	

Ref 12505WS-09(YEONHO)