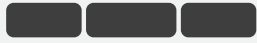


MC-108

LVDS EX-SDI CVBS

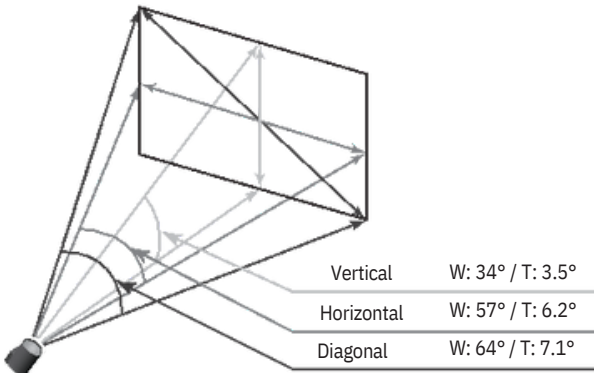
2MP High Resolution 10x Zoom Module



Features

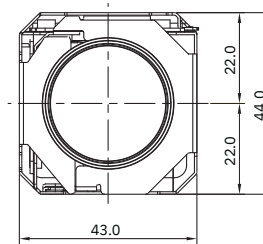
- 1/2.8" 2MP Sony CMOS Sensor
- 1080p 60fps/30fps, 720p 60fps/30fps •10x Optical Zoom(5.1~51mm) & 32x Digital Zoom
- Day & Night(ICR)
- Wide Dynamic Range
- Digital Noise Reduction(2D+3D)
- Privacy Mask Function
- Digital Image Stabilization
- High Light Compensation
- Intelligent Motion Detection
- Defog Function
- Supports VISCA, Pelco-D/P Protocol
- Video Out : LVDS, EX-SDI, CVBS

Field of View

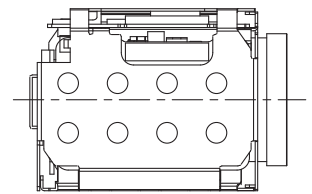


Dimensions

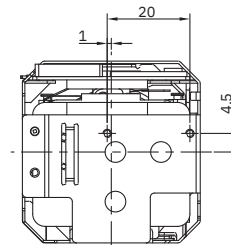
Unit : mm



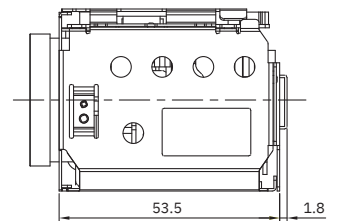
FRONT



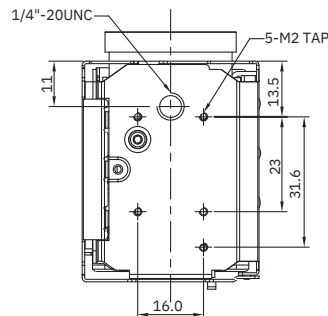
LEFT SIDE



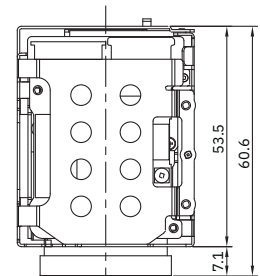
BACK



RIGHT SIDE



BOTTOM



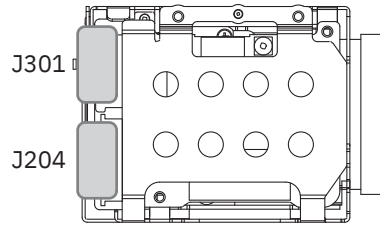
TOP

Specifications

| MC-108 | | | | |
|---------------------------|---|------|------|------|
| Image Sensor | 1/2.8" Sony CMOS Sensor | | | |
| Total Pixels | 1,945 (H) x 1,109 (V) = 2.16M Pixels | | | |
| Effective Pixels | 1,945 (H) x 1,097 (V) = 2.13M Pixels | | | |
| Scanning System | Progressive Scan | | | |
| Sync. System | Internal | | | |
| Resolution | Digital : 1080p/60(50)fps, 1080p/30(25)fps, 720p/60(50)fps, 720p/30(25)fps Analog : 700TVL | | | |
| Min. Illumination | Color(1/30s, 60dB) : 0.003 lux, BW(1/30s, 60dB) : 0.0004 lux Color DSS(1/8s, 60dB) : 0.00075 lux , BW DSS(1/8s, 60dB) : 0.0001 lux | | | |
| Video Output | HD : LVDS, EX-SDI Analog SD : VBS(without WDR) | | | |
| S/N Ratio | more than 50dB(AGC off) | | | |
| Lens Type | 10x Day & Night Zoom Lens | | | |
| Zoom Ratio | Optical 10x, Digital 32x Zoom | | | |
| Focal Length | f = 5.1mm ~ 51mm | | | |
| Aperture Ratio | F1.6(wide) ~ F1.8(tele) | | | |
| Angle Of View(D, H, V) | Wide | 64° | 57° | 34° |
| | Tele | 7.1° | 6.2° | 3.5° |
| AF Mode | Auto / One Push / Manual | | | |
| Min. Distance | 0.1 / 1.0 / 3.0 / 5.0 / 10.0 m | | | |
| Lens Refresh | One Push / 1 ~ 10Day | | | |
| Digital Zoom | Off / MAX 2x ~ 32x | | | |
| Exposure | Auto / Iris.P / Shut.P / Manual | | | |
| Gain Control(AGC) | Off / On | | | |
| Shutter Speed | 1/30(25) ~ 1/30,000 sec | | | |
| Iris | 0 ~ 20 steps | | | |
| Digital Slow Shutter(DSS) | Off / 2x / 4x / (8x : 60 or 50 fps mode only) | | | |
| Brightness | 0 ~ 20 steps | | | |
| WDR/BLC | Off / WDR / BLC | | | |
| Day&Night | Auto / Day / Night / Ext-in | | | |
| White Balance | Auto / One Push / Manual / Indoor / Outdoor | | | |
| HLC | Off / On / Night Only | | | |
| DNR | Auto / Off / Low / Middle / High | | | |
| Mirror | Off / H / V / H&V | | | |
| Sharpness | 0 ~ 10 steps | | | |
| ACE | Off / Low / Middle / High | | | |
| Defog | Off / On(Auto / Manual) | | | |
| Privacy Mask | Max. 24 Areas | | | |
| Motion Detection | Max. 3 Areas | | | |
| Defect Detection | Off / On | | | |
| System | NTSC / PAL | | | |
| Communication | Baud Rate : 2400 / 4800 / 9600 / 19200 / 38400 / 57600 / 115200 Protocol : VISCA / Pelco-D / Pelco- P / Update | | | |
| Language | English / Simplified Chinese / Traditional Chinese / Japanese | | | |
| Power Source | 9V to 15V DC | | | |
| Power Consumption | MAX 400mA | | | |
| Power Input | Connector | | | |
| Video Output | Connector | | | |
| Storage Temperature | -20°C ~ +60°C (Humidity : 0%RH ~ 90%RH) | | | |
| Operating Temperature | -10°C ~ +50°C (Humidity : 0%RH ~ 90%RH) | | | |
| Dimensions | 43(W) x 44(H) x 61(D) | | | |
| Weight | 112g | | | |

* Design and specifications are subject to change without notice.

Pin Assignment



| J301 | |
|------|--------------|
| 1 | TXOUT3+ |
| 2 | TXOUT3- |
| 3 | TXCLKOUT+ |
| 4 | TXCLKOUT- |
| 5 | TXOUT2+ |
| 6 | TXOUT2- |
| 7 | TXOUT1+ |
| 8 | TXOUT1- |
| 9 | TXOUT0+ |
| 10 | TXOUT0- |
| 11 | GND |
| 12 | TxD CMOS 5 V |
| 13 | RxD |
| 14 | DC 12V |
| 15 | DC 12V |
| 16 | DC 12V |
| 17 | DC 12V |
| 18 | DC 12V |
| 19 | GND |
| 20 | GND |
| 21 | TXOUT7+ |
| 22 | TXOUT7- |
| 23 | TXOUT6+ |
| 24 | TXOUT6- |
| 25 | EX-SDI+ |
| 26 | EX-SDI- |
| 27 | TXOUT5+ |
| 28 | TXOUT5- |
| 29 | TXOUT4+ |
| 30 | TXOUT4- |

Ref USL00-30L-C (KEL Cop.)

| J204 | |
|------|---------|
| 1 | GND |
| 2 | TxD |
| 3 | RxD |
| 4 | NC |
| 5 | GND |
| 6 | NC |
| 7 | GND |
| 8 | ADKEY |
| 9 | NC |
| 10 | D/N-IN |
| 11 | NC |
| 12 | MD-OUT |
| 13 | 485-DIR |
| 14 | F/W_SEL |
| 15 | GND |
| 16 | +5V |
| 17 | GND |
| 18 | VBS-OUT |
| 19 | GND |
| 20 | DC 12V |
| 21 | DC 12V |
| 22 | DC 12V |
| 23 | DC 12V |
| 24 | DC 12V |

Ref 05002HR-24J05 (YEONHO)