

MC-105Q

4MP High Resolution 10x Zoom Module

LVDS CVBS



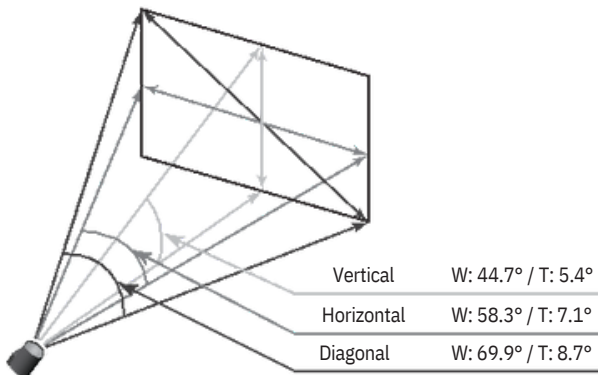
1/2.8" CMOS	30fps QHD 1440p	10x ZOOM	AF ZOOM	3D DNR	DSS	MOTION
----------------	-----------------------	-------------	------------	-----------	-----	--------



Features

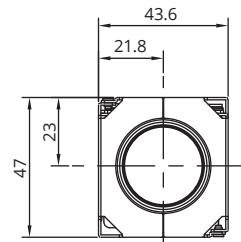
- 1/2.8" 5MP Sony CMOS Sensor
- 1440P 30/25fps, 1080p 30/25fps, 720p 30/25fps • 10x Optical Zoom(4.7mm~47mm) & 32x Digital Zoom
- Day & Night(ICR)
- Wide Dynamic Range
- Digital Noise Reduction(2D+3D)
- Privacy Mask Function
- Digital Image Stabilization
- High Light Compensation
- Intelligent Motion Detection
- Defog Function
- Supports VISCA, Pelco-D/P Protocol
- Video Out : LVDS, CVBS

Field of View

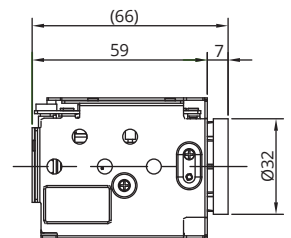


Dimensions

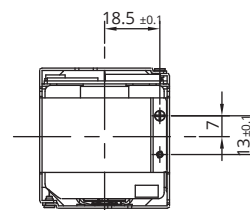
Unit : mm



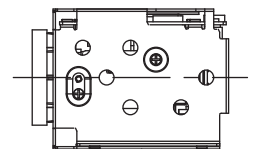
FRONT



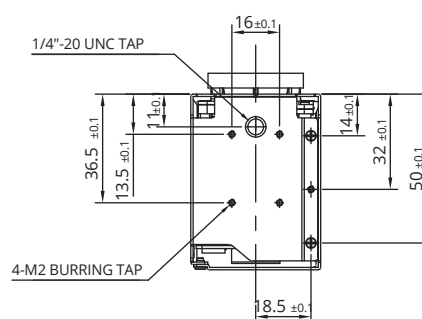
LEFT



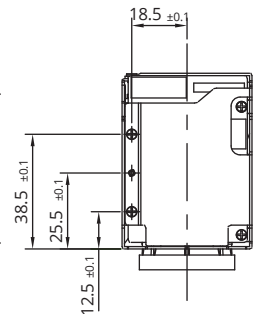
BACK



RIGHT



BOTTOM



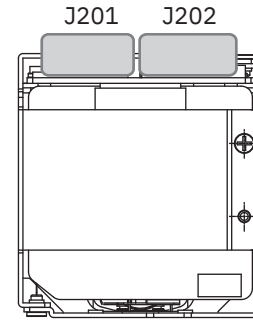
TOP

Specifications

MC-105Q				
Image Sensor	1/2.8" Sony CMOS Sensor			
Total Pixels	2,704(H) x 2,104(V) = 5.69M Pixels			
Effective Pixels	2,616(H) x 1,960(V) = 5.13M Pixels			
Scanning System	Progressive Scan			
Sync. System	Internal			
Resolution	Digital : 1440P 30/25fps,1080p 30/25fps, 720p 30/25fps			
	Analog : CVBS			
Min. Illumination	Color(1/30s, 72.0dB) : 0.02 lux , BW(1/30s, 72.0dB) : 0.005 lux			
	Color DSS(1/1s, 72.0dB) : 0.002 lux , BW DSS(1/1s, 72.0dB) : 0.0005			
Video Output	lux Digital : LVDS			
	Analog SD : CVBS			
S/N Ratio	more than 50dB(AGC off)			
Lens Type	10x Day & Night Zoom Lens			
Zoom Ratio	Optical 10x, Digital 32x Zoom			
Focal Length	f = 4.7mm ~ 47mm			
Aperture Ratio	F1.7(wide) ~ F3.1(tele)			
Angle Of View(D, H, V)	Wide	69.9°	58.3°	44.7°
	Tele	8.7°	7.1°	5.4°
AF Mode	Auto / One Push / Manual / Auto-Ext			
Min. Distance	0.1 / 2.0 / 3.0 / 5.0 / 10.0 m			
Lens Refresh	One Push / 1 ~ 10Day			
Digital Zoom	Off / MAX 2x ~ 32x			
Exposure	Auto / Iris.P / Shut.P / Manual			
Gain Control(AGC)	0 ~ 10 steps			
Shutter Speed	1/1 ~ 1/100,000 sec			
Iris	Close ~ F1.6			
Digital Slow Shutter(DSS)	Off / x2 / x4 / x8 / x16 / x32			
Brightness	0 ~ 14 steps			
Back Light	Off / BLC / HLC			
Day&Night	Auto / Day / Night / Ext-in			
White Balance	Auto / One Push / Manual / Indoor / Outdoor / Auto-Ext			
DNR	2D/3D, 2D+3D			
Mirror	Off / H / V / H&V			
Sharpness	0 ~ 15 steps			
Defog	Off / Manual / Auto			
Privacy Mask	Off / On (8 points)			
Motion Detection	Off / On (4 points)			
Defect Detection	Off / On			
System	NTSC / PAL			
Communication	Baud Rate : 2400 / 4800 / 9600 / 19200 / 38400 / 57600 / 115200			
	Protocol : Pelco-P / Pelco-D / VISCA			
Power Source	9V to 15V DC			
Power Consumption	MAX 420mA (@ 12VDC)			
Power Input	Connector			
Video Output	Connector			
Storage Temperature	-20°C ~ +60°C (Humidity : 0%RH ~ 90%RH)			
Operating Temperature	-10°C ~ +50°C (Humidity : 0%RH ~ 90%RH)			
Dimensions	43.6(W) x 47(H) x 66(D)			
Weight	165g			

* Design and specifications are subject to change without notice.

Pin Assignment



J201		J202	
1	TXOUT3+	1	GND
2	TXOUT3-	2	TxD
3	TXCLKOUT+	3	RxD
4	TXCLKOUT-	4	NC
5	TXOUT2+	5	GND
6	TXOUT2-	6	NC
7	TXOUT1+	7	GND
8	TXOUT1-	8	ADKEY
9	TXOUT0+	9	NC
10	TXOUT0-	10	D/N-IN
11	GND	11	NC
12	TxD	12	MD-OUT
13	RxD	13	485-DIR
14	DC IN	14	NC
15	DC IN	15	GND
16	DC IN	16	+5V
17	DC IN	17	GND
18	DC IN	18	CVBS-OUT
19	GND	19	GND
20	GND	20	DC IN
21	TXOUT7+	21	DC IN
22	TXOUT7-	22	DC IN
23	TXOUT6+	23	DC IN
24	TXOUT6-	24	DC IN
25	NC		
26	NC		
27	TXOUT5+		
28	TXOUT5-		
29	TXOUT4+		
30	TXOUT4-		