

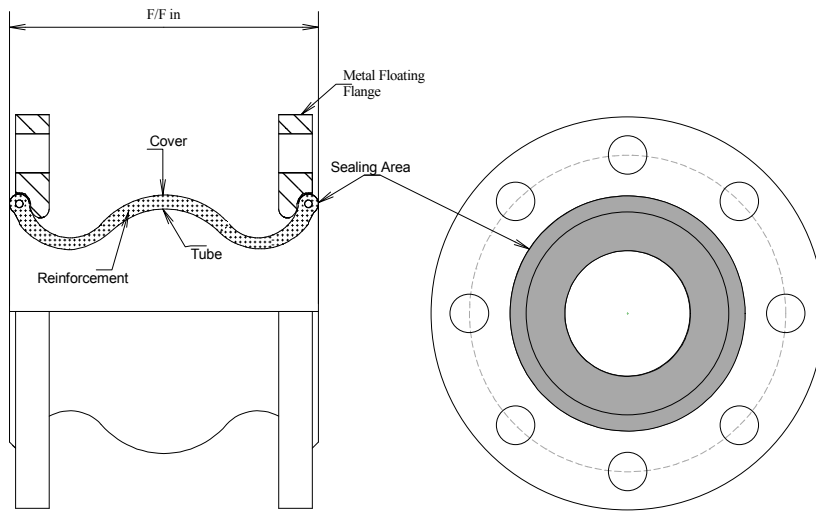
Special Notes:

Design:
Tube: Neoprene
Cover: Neoprene
Reinforcement: Nylon Tire Cord
Ends: Rotating 150# CS
Misc.:
Temp: 160 Degrees F

This document is the property of Global-Flex Mfg, and can not be distributed without Global-Flex Mfg. authorization

Global-Flex Mfg.

GFM #	Size	Face to Face	BHC	Number Of Holes	Hole Size	Movement Ratings				Pressure @ 160 F	Weight
						Axial Comp	Axial Elong	Lateral	Angular		
RSN-150	1-1/2	6	3.88"	4	5/8	1/2	3/8	1/2	15	225	6.1
RSN-200	2	6	4.75"	4	3/4	1/2	3/8	1/2	15	225	8.9
RSN-250	2-1/2	6	5.50"	4	3/4	1/2	3/8	1/2	15	225	12.3
RSN-300	3	6	6.00"	4	3/4	5/8	3/8	1/2	15	225	14.0
RSN-400	4	6	7.50"	8	3/4	5/8	3/8	1/2	15	225	18.3
RSN-500	5	6	8.50"	8	7/8	5/8	3/8	1/2	15	225	22.8
RSN-600	6	6	9.50"	8	7/8	5/8	3/8	1/2	15	225	26.8
RSN-800	8	6	11.75"	8	7/8	5/8	3/8	1/2	15	225	40.6
RSN-1000	10	8	14.25"	12	1"	3/4	1/2	3/4	15	225	56.6
RSN-1200	12	8	17.00"	12	1"	3/4	1/2	3/4	15	225	83.0
RSN-1400	14	8	18.75"	12	1-1/8	3/4	1/2	3/4	15	150	115.0
RSN-1600	16	8	21.25"	16	1-1/8	3/4	1/2	3/4	15	125	165.0
RSN-1800	18	8	22.75"	16	1-1/4	3/4	1/2	3/4	15	125	168.0
RSN-2000	20	8	25.00"	20	1-1/4	3/4	1/2	3/4	15	125	170.0



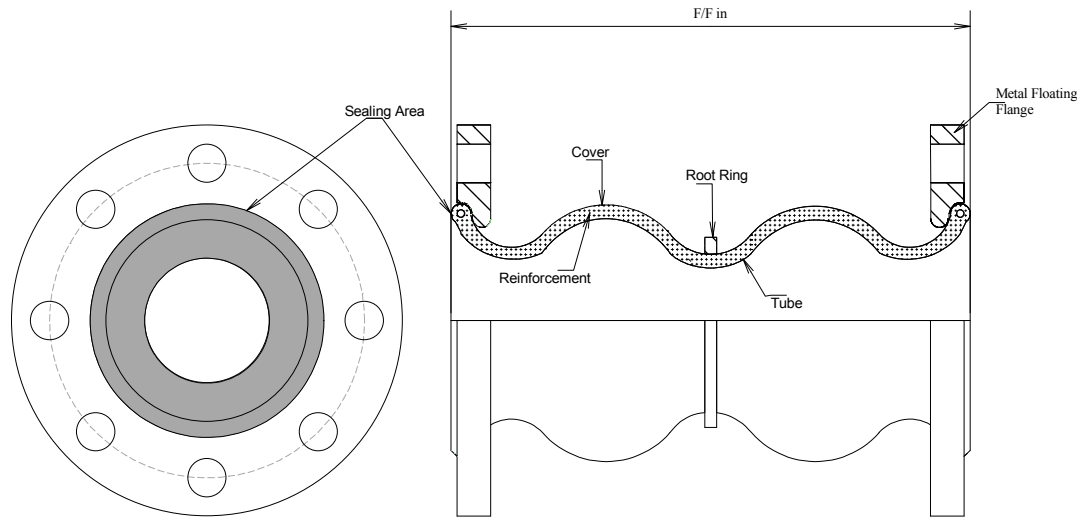
Special Notes:

Design:
Tube: EPDM
Cover: EPDM
Reinforcement: Nylon Tire Cord
Ends: Rotating 150# CS
Misc.:
Temp: 180 Degrees F

This document is the property of Global-Flex Mfg, and can not be distributed without Global-Flex Mfg. authorization

Global-Flex Mfg.

GFM #	Size	Face to Face	BHC	Number Of Holes	Hole Size	Movement Ratings				Pressure @ 180 F	Weight
						Axial Comp	Axial Elong.	Lateral	Angular		
RSE-150	1-1/2	6	3.88"	4	5/8	1/2	3/8	1/2	15	225	6.1
RSE-200	2	6	4.75"	4	3/4	1/2	3/8	1/2	15	225	8.9
RSE-250	2-1/2	6	5.50"	4	3/4	1/2	3/8	1/2	15	225	12.3
RSE-300	3	6	6.00"	4	3/4	5/8	3/8	1/2	15	225	14.0
RSE-400	4	6	7.50"	8	3/4	5/8	3/8	1/2	15	225	18.3
RSE-500	5	6	8.50"	8	7/8	5/8	3/8	1/2	15	225	22.8
RSE-600	6	6	9.50"	8	7/8	5/8	3/8	1/2	15	225	26.8
RSE-800	8	6	11.75"	8	7/8	5/8	3/8	1/2	15	225	40.6
RSE-1000	10	8	14.25"	12	1"	3/4	1/2	3/4	15	225	56.6
RSE-1200	12	8	17.00"	12	1"	3/4	1/2	3/4	15	225	83.0
RSE-1400	14	8	18.75"	12	1-1/8	3/4	1/2	3/4	15	150	115.0
RSE-1600	16	8	21.25"	16	1-1/8	3/4	1/2	3/4	15	125	165.0
RSE-1800	18	8	22.75"	16	1-1/4	3/4	1/2	3/4	15	125	168.0
RSE-2000	20	8	25.00"	20	1-1/4	3/4	1/2	3/4	15	125	170.0
RSE-2400	24	10	29.50"	20	1-3/8	3/4	1/2	3/4	15	114	195.0



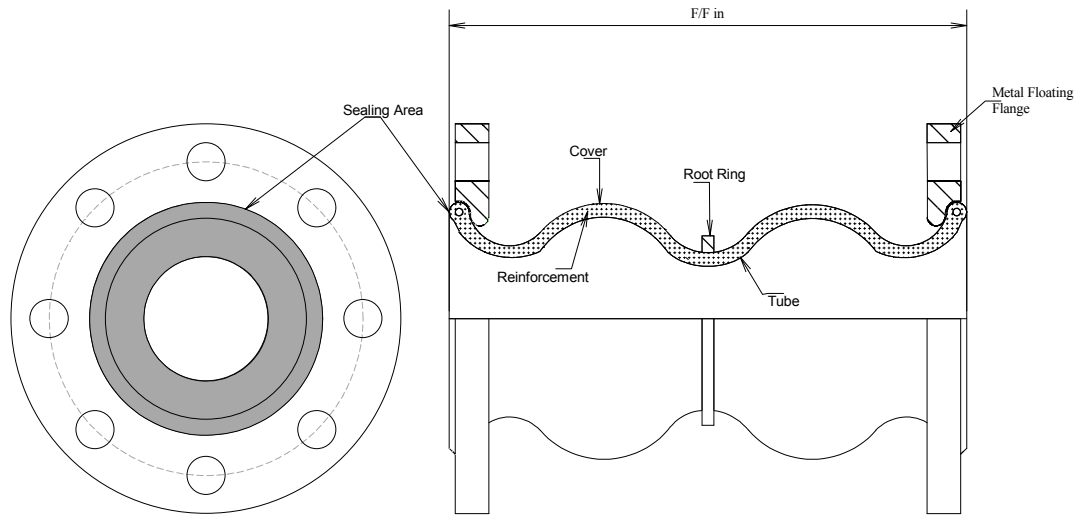
Special Notes:

Design:
Tube: Neoprene
Cover: Neoprene
Reinforcement: Nylon Tire Cord
Ends: Rotating 150# CS
Misc.:
Temp: 160 Degrees F

This document is the property of Global-Flex Mfg. and can not be distributed without Global-Flex Mfg. authorization

Global-Flex Mfg.

GFM #	Size	Face to Face	BHC	Number Of Holes	Hole Size	Movement Ratings				Pressure @ 160 F	Weight
						Axial Comp	Axial Elong	Lateral	Angular		
RDN-150	1-1/2	7	3.88"	4	5/8	1	3/4	1	40	225	8.2
RDN-200	2	7	4.75"	4	3/4	1	3/4	1	40	225	9.0
RDN-250	2-1/2	7	5.50"	4	3/4	1	3/4	1	40	225	13.3
RDN-300	3	7	6.00"	4	3/4	1	3/4	1	40	225	14.3
RDN-400	4	9	7.50"	8	3/4	1-3/8	1	1-1/4	35	225	20.3
RDN-500	5	9	8.50"	8	7/8	1-3/8	1	1-1/4	35	225	24.5
RDN-600	6	9	9.50"	8	7/8	1-3/8	1	1-1/4	35	225	29.5
RDN-800	8	13	11.75"	8	7/8	1-3/4	1	1-1/2	30	225	43.8
RDN-1000	10	13	14.25"	12	1	1-3/4	1	1-1/2	30	225	64.1
RDN-1200	12	13	17.00"	12	1	1-3/4	1	1-1/2	30	225	95.0
RDN-1400	14	13.75	18.75"	12	1-1/8	1-3/4	1-1/4	1-1/2	30	125	98.0
RDN-1600	16	13.75	21.25"	16	1-1/8	1-3/4	1-1/4	1-1/2	30	125	110.0
RDN-1800	18	13.75	22.75"	16	1-1/4	1-3/4	1-1/4	1-1/2	30	125	118.0
RDN-2000	20	13.75	29.50"	20	1-1/4	1-3/4	1-1/4	1-1/2	30	125	125.0



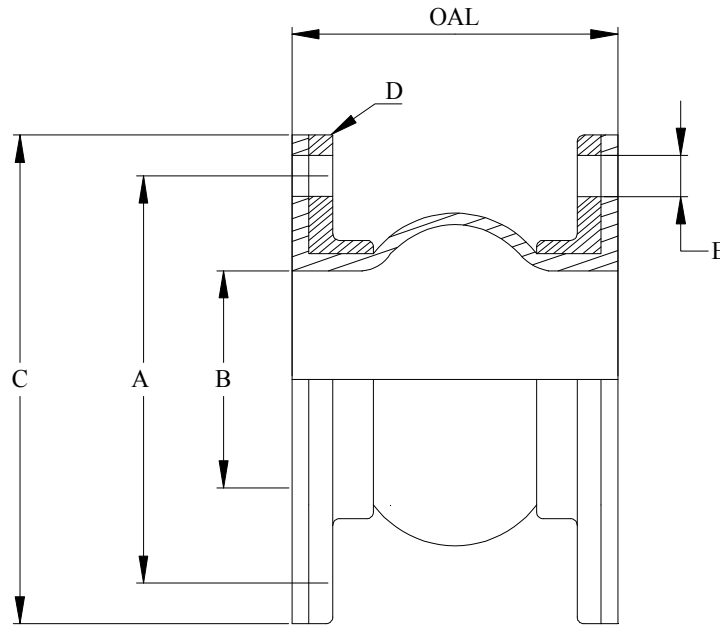
Special Notes:

- Design:**
Tube: EPDM
Cover: EPDM
Reinforcement: Nylon Tire Cord
Ends: Rotating 150# CS
Misc.:
Temp: 180 Degrees F

This document is the property of Global-Flex Mfg, and can not be distributed without Global-Flex Mfg. authorization



GFM #	Size	Face to Face	BHC	Number Of Holes	Hole Size	Movement Ratings				Pressure @ 180 F	Weight
						Axial Comp	Axial Elong	Lateral	Angular		
RDE-150	1-1/2	7	3.88"	4	5/8	1	3/4	1	40	225	8.2
RDE-200	2	7	4.75"	4	3/4	1	3/4	1	40	225	9.0
RDE-250	2-1/2	7	5.50"	4	3/4	1	3/4	1	40	225	13.3
RDE-300	3	7	6.00"	4	3/4	1	3/4	1	40	225	14.3
RDE-400	4	9	7.50"	8	3/4	1-3/8	1	1-1/4	35	225	20.3
RDE-500	5	9	8.50"	8	7/8	1-3/8	1	1-1/4	35	225	24.5
RDE-600	6	9	9.50"	8	7/8	1-3/8	1	1-1/4	35	225	29.5
RDE-800	8	13	11.75"	8	7/8	1-3/4	1	1-1/2	30	225	43.8
RDE-1000	10	13	14.25"	12	1	1-3/4	1	1-1/2	30	225	64.1
RDE-1200	12	13	17.00"	12	1	1-3/4	1	1-1/2	30	225	95.0
RDE-1400	14	13.75	18.75"	12	1-1/8	1-3/4	1-1/4	1-1/2	30	150	98.0
RDE-1600	16	13.75	21.25"	16	1-1/8	1-3/4	1-1/4	1-1/2	30	125	110.0
RDE-1800	18	13.75	22.75"	16	1-1/4	1-3/4	1-1/4	1-1/2	30	125	118.0
RDE-2000	20	13.75	29.50"	20	1-1/4	1-3/4	1-1/4	1-1/2	30	125	125.0



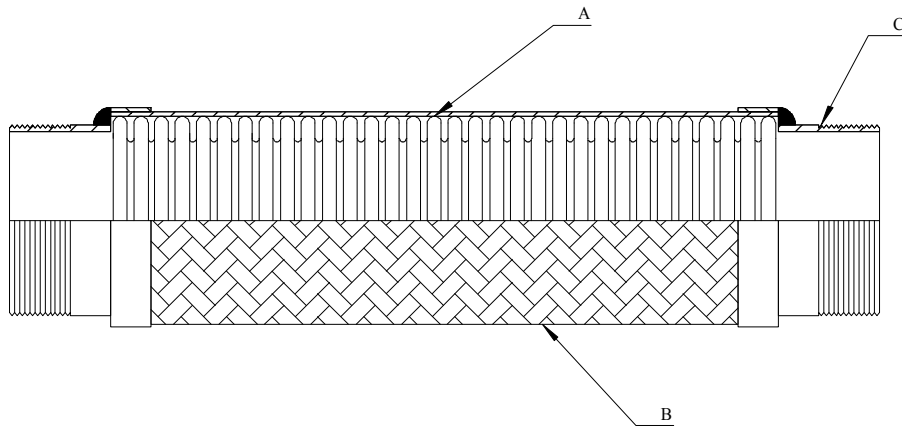
Special Notes:

Design:
Tube: Butyl
Cover: Butyl
Reinforcement: Nylon Tire Cord
Ends: Duck/Rubber 150#
Misc.:
Temp: 160 Degrees F

This document is the property of Global-Flex Mfg, and can not be distributed without Global-Flex Mfg. authorization

Global-Flex Mfg.

GFM #	Size	Face to Face	BHC	Number of Holes	Hole Size	Movement Ratings				Pressure @ 160 F	Weight
						Axial Comp	Axial Elong	Lateral	Angular Degree		
REJM200BB-6.0	2	6.0	4.75"	4	0.75"	1.75"	0.75"	0.75"	35	200	
REJM250BB-6.0	2-1/2	6.0	5.50"	4	0.75"	1.75"	0.75"	0.75"	30	200	
REJM300BB-6.0	3	6.0	6.00"	4	0.75"	1.75"	0.75"	0.75"	30	200	
REJM400BB-6.0	4	6.0	7.50"	8	0.75"	1.75"	0.75"	0.75"	25	200	
REJM500BB-6.0	5	6.0	8.50"	8	0.875"	1.75"	0.75"	0.75"	25	200	
REJM600BB-6.0	6	6.0	9.50"	8	0.875"	1.75"	0.75"	1.00"	20	200	
REJM800BB-6.0	8	6.0	11.75"	8	0.875"	1.75"	0.75"	1.00"	20	180	
REJM1000BB-8.0	10	8.0	14.25"	12	1.00"	1.75"	0.75"	1.00"	15	180	
REJM1200BB-8.0	12	8.0	17.00"	12	1.00"	1.75"	0.75"	1.00"	15	180	



Special Notes:

Design:

A) Tube 321 Stainless Steel

B) Braid 304 Stainless Steel

C) Ends: C/S MPT

Misc.:

Temp: 750 Degrees F

Axial: 0.0"

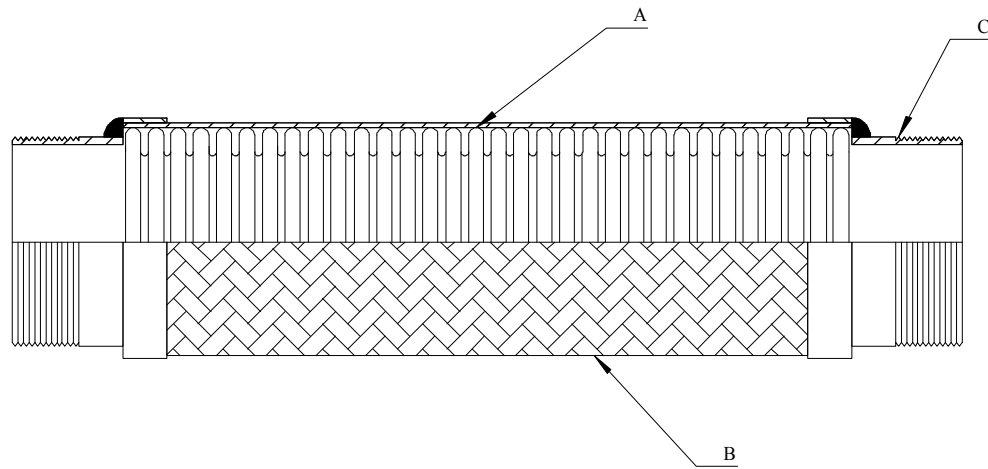
Lateral 0.125"

This document is the property of Global-Flex Mfg, and can not be distributed without Global-Flex Mfg. authorization

Global-Flex Mfg.

Qty	GFM Part Number	Size Inches	Overall Length	WORKING PRESSURE		Weight Lbs.
				AT 70F	AT 250F	
	PM-050	1/2	6.5	825	760	0.5
	PM-075	3/4	7.0	487	448	0.8
	PM-100	1	8.0	475	437	1.0
	PM-125	1-1/4	8.5	425	391	1.5
	PM-150	1-1/2	9.0	425	391	2.0
	PM-200	2	10.5	300	276	2.5
	PM-250	2-1/2	12.0	350	322	3.0
	PM-300	3	14.0	300	276	5.0
	PM-400	4	16.0	250	230	8.0

Updated 09-05-2012



Special Notes:

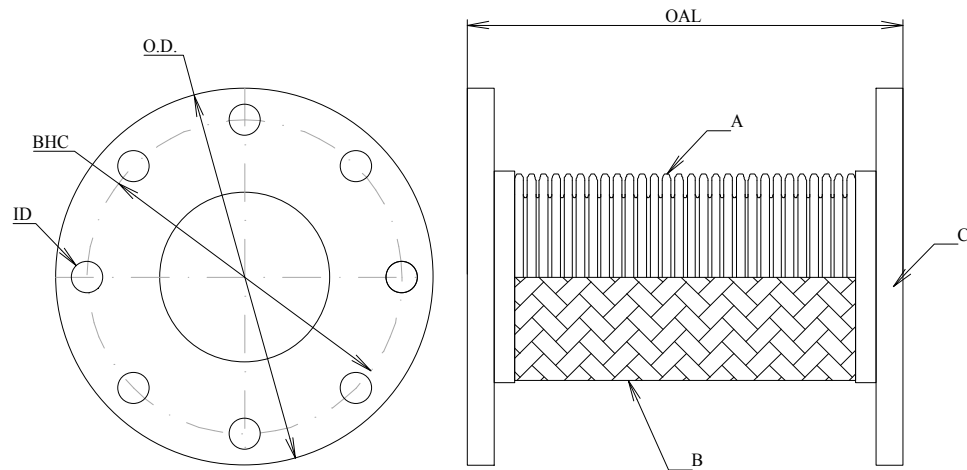
Design:

- A) Tube** 321 Stainless Steel
- B) Braid** 304 Stainless Steel
- C) Ends:** C/S MPT
- Misc.:**
- Temp:** 750 Degrees F
- Axial:** 0.0"
- Lateral** 0.25"

This document is the property of Global-Flex Mfg, and can not be distributed without Global-Flex Mfg. authorization



Qty	GFM Part Number	Size Inches	Overall Length	WORKING PRESSURE		Weigh Lbs.
				AT 70F	AT 250F	
	PML-050	1/2	10.0	825	760	1.10
	PML-075	3/4	11.0	600	552	1.25
	PML-100	1	12.0	580	534	1.95
	PML-125	1-1/4	13.0	450	414	2.25
	PML-150	1-1/2	14.0	410	377	2.78
	PML-200	2	15.0	442	407	3.01
	PML-250	2-1/2	15.0	415	398	3.98



Special Notes:

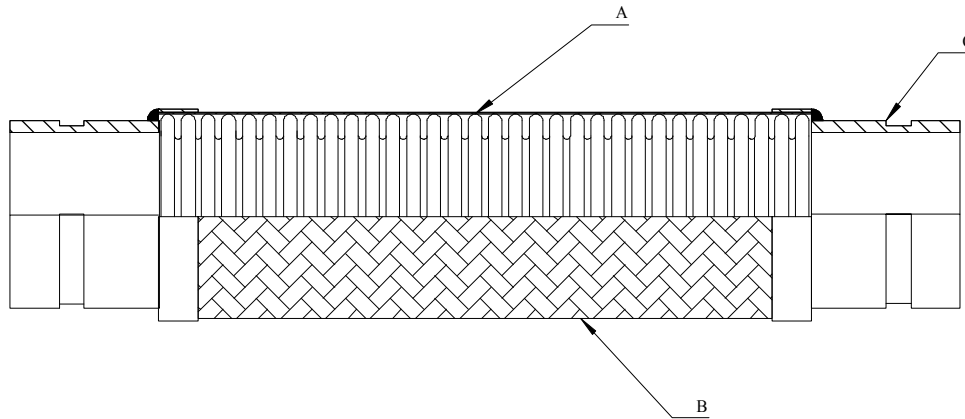
Design:

- A) Tube** 321 Stainless Steel
- B) Braid** 304 Stainless Steel
- C) Ends:** Carbon Steel ANSI 150
- Misc.:**
- Temp:** 750 Degrees F
- Axial:** 0.0"
- Lateral** 0.125"

This document is the property of Global-Flex Mfg, and can not be distributed without Global-Flex Mfg. authorization

Global-Flex Mfg.

GFM Part Number	Size Inches	Over All Length	Flange OD	Bolt Hole Center	No Bolt Holes	Hole Size	WORKING PRESSURE		Weight
							@ 70 degrees F	@ 250 degrees F	
PF-150	1-1/2	9.0"	5.0"	3.875"	4	0.625"	410	377	8.0
PF-200	2.0	9.0"	6.0"	4.75"	4	0.750"	300	276	11.0
PF-250	2-/12	9.0"	7.0"	5.50"	4	0.750"	350	322	14.0
PF-300	3.0	9.0"	7.5"	6.00"	4	0.750"	300	276	15.0
PF-400	4.0	9.0"	9.0"	7.50"	8	0.750"	250	230	20.0
PF-500	5.0	11.0"	10.0"	8.50"	8	0.875"	175	161	28.0
PF-600	6.0	11.0"	11.0"	9.50"	8	0.875"	165	152	33.0
PF-800	8.0	12.0"	13.5"	11.75"	8	0.875"	174	160	52.0
PF-1000	10.0	13.0"	16.0"	14.25"	12	1.00"	180	165	74.0
PF-1200	12.0	14.0"	19.0"	17.00"	12	1.00"	130	119	100.0
PF-1400	14.0	14.0"	21.0"	18.75"	12	1.125"	150	138	110.0
PF-1600	16.0	14.0"	23.5"	21.25"	16	1.125"	110	101	198.0
PF-1800	18.0	14.0"	25.0"	22.75"	16	1.250"	85	78	295.0



Special Notes:

Design:

A) Tube 321 Stainless Steel

B) Braid 304 Stainless Steel

C) Ends: C/S Grooved Ends

Misc.:

Temp: 750 Degrees F

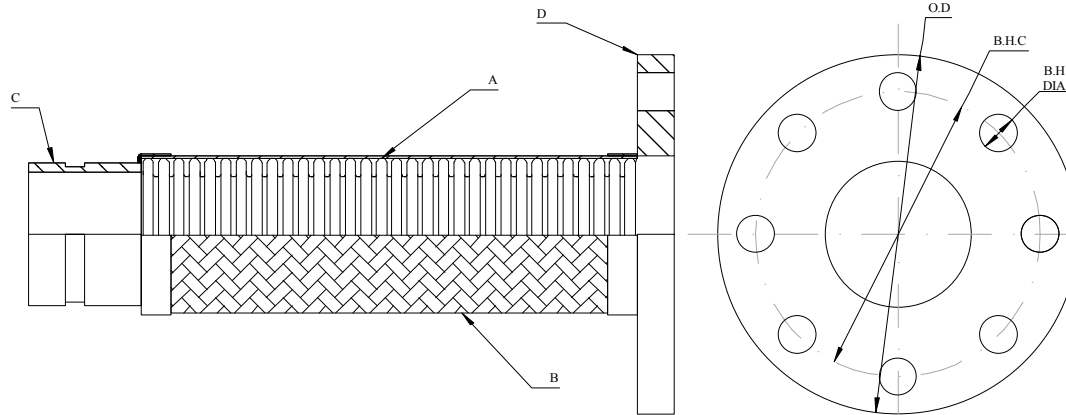
Axial: 0.0"

Lateral 0.125"

This document is the property of Global-Flex Mfg, and can not be distributed without Global-Flex Mfg. authorization

Global-Flex Mfg.

Qty	GFM Part Number	Size Inches	Overall Length	WORKING PRESSURE		Weight Lbs.
				AT 70F	AT 250F	
	PG-200	2"	12"	442	407	15.25
	PG-250	2-1/2"	14"	390	359	16.85
	PG-300	3"	14"	310	286	18.95
	PG-400	4"	15"	250	230	22.25
	PG-500	5"	16"	185	170	31.25
	PG-600	6"	16"	165	151	38.36
	PG-800	8"	17"	220	202	57.98
	PG-1000	10"	18"	175	161	79.26
	PG-1200	12"	19"	160	147	110.00
	PG-1400	14"	14"	150	138	115.00
	PG-1600	16"	14"	110	101	198.00
	PG-1800	18"	14"	85	78	310.00



Special Notes:

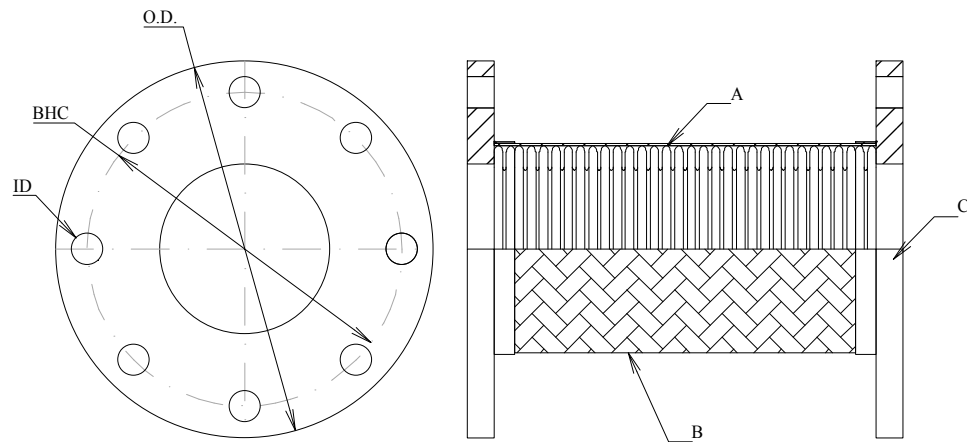
Design:

- A) Tube** 321 Stainless Steel
- B) Braid** 304 Stainless Steel
- C) Ends:** C/S Groove Ends
- D) Ends:** C/S ANSI Plate Flange
- Temp:** 750 Degrees F
- Axial:** 0.0"
- Lateral** 0.125"

This document is the property of Global-Flex Mfg, and can not be distributed without Global-Flex Mfg. authorization

Global-Flex Mfg.

GFM Part Number	Size Inches	Over All Length	Flange OD	Bolt Hole Center	No Bolt Holes	Hole Size	WORKING PRESSURE		Weight Lbs.
							@ 70 degrees F	@ 250 degrees F	
PGF-200	2.0	12.0"	6.0"	4.75"	4	0.750"	442	407	15.25
PGF-250	2-1/2	12.0"	7.0"	5.50"	4	0.750"	390	359	16.85
PGF-300	3.0	13.0"	7.5"	6.00"	4	0.750"	310	286	18.95
PGF-400	4.0	13.0"	9.0"	7.50"	8	0.750"	250	230	22.25
PGF-500	5.0	14.0"	10.0"	8.50"	8	0.875"	185	170	31.25
PGF-600	6.0	14.0"	11.0"	9.50"	8	0.875"	165	151	38.36
PGF-800	8.0	15.0"	13.5"	11.75"	8	0.875"	220	202	57.98
PGF-1000	10.0	16.0"	16.0"	14.25"	12	1.00"	175	161	79.26
PGF-1200	12.0	17.0"	19.0"	17.00"	12	1.00"	160	147	110.00



Special Notes:

Design:

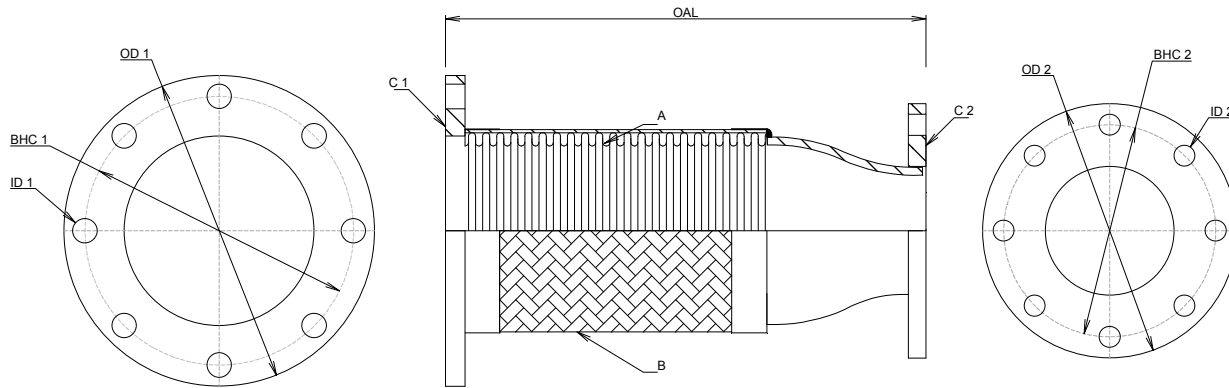
- A) Tube** 321 Stainless Steel
- B) Braid** 304 Stainless Steel
- C) Ends:** Carbon Steel ANSI 150
- Misc.:**
- Temp:** 750 Degrees F
- Axial:** 0.0"
- Lateral** 0.25"

This document is the property of Global-Flex Mfg, and can not be distributed without Global-Flex Mfg. authorization

Global-Flex Mfg.

GFM Part Number	Size Inches	Over All Length	Flange OD	Bolt Hole Center	No Bolt Holes	Hole Size	WORKING PRESSURE		Weight Lbs.
							@ 70 degrees F	@ 250 degrees F	
PFL-200	2.0	12.0"	6.0"	4.75"	4	0.750"	442	407	12.50
PFL-250	2-1/2	12.0	7.0"	5.50"	4	0.750"	390	359	15.25
PFL-300	3.0	12.0"	7.5"	6.00"	4	0.750"	310	286	16.25
PFL-400	4.0	12.0"	9.0"	7.50"	8	0.750"	250	230	22.0
PFL-500	5.0	18.0"	10.0"	8.50"	8	0.875"	185	170	29.25
PFL-600	6.0	18.0"	11.0"	9.50"	8	0.875"	165	151	36.25
PFL-800	8.0	22.0"	13.5"	11.75"	8	0.875"	220	202	55.36
PFL-1000	10.0	22.0"	16.0"	14.25"	12	1.00"	175	161	79.25

Updated 09-05-2012



Special Notes:

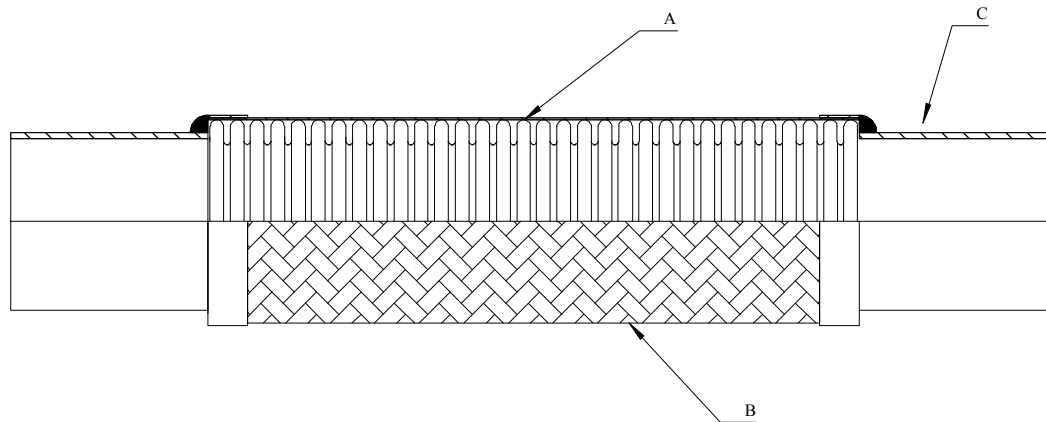
Design:

- A) Tube** 321 Stainless Steel
- B) Braid** 304 Stainless Steel
- C) Ends:** Carbon Steel ANSI 150
- Misc.:**
- Temp:** 750 Degrees F
- Axial:** 0.0"
- Lateral** 0.125"

This document is the property of Global-Flex Mfg, and can not be distributed without Global-Flex Mfg. authorization



GFM Part Number	Size Inches	Over All Length	Flange OD		Bolt Hole Center		No Bolt Holes		Hole Size		WORKING PRESSURE		Weight Lb.
											@ 70 Deg F	@ 250 Deg F	
SNR-250200	2-1/2"X2"	13.0"	7.0"	6.0"	5.50"	4.75"	4	4	0.75"	0.75"	442	390	15.0
SNR-300200	3"X2"	13.0"	7.5"	6.0"	6.00"	4.75"	4	4	0.75"	0.75"	310	286	16.25
SNR-400200	4"X2"	13.0"	9.0"	6.0"	7.50"	4.75"	8	4	0.75"	0.75"	250	230	22.0
SNR-400250	4"X2-1/2"	13.0"	9.0"	7.0"	7.50"	5.50"	8	4	0.75"	0.75"	250	230	23.0
SNR-400300	4"X3"	13.0"	9.0"	7.5"	7.50"	6.00"	8	4	0.75"	0.75"	250	230	24.0
SNR-500250	5"X2-1/2"	16.0"	10.0"	7.0"	8.50"	4.75"	8	4	0.875"	0.75"	185	170	29.0
SNR-500300	5"X3"	16.0"	10.0"	7.5"	8.50"	6.00"	8	4	0.875"	0.75"	185	170	31.5
SNR-500400	5"X4"	16.0"	10.0"	9.0"	8.50"	7.50"	8	8	0.875"	0.75"	185	170	32.5
SNR-600300	6"X3"	17.0"	11.0"	7.5"	9.50"	6.00"	8	4	0.875"	0.75"	165	151	33.0
SNR-600400	6"X4"	17.0"	11.0"	9.0"	9.50"	7.50"	8	8	0.875"	0.75"	165	151	32.0
SNR-600500	6"X5"	17.0"	11.0"	10.0"	9.50"	8.50"	8	8	0.875"	0.875"	165	151	35.0
SNR-800400	8"X4"	18.0"	13.5"	9.0"	11.75"	7.50"	8	8	0.875"	0.75"	175	161	39.0
SNR-800500	8"X5"	18.0"	13.5"	10.0"	11.75"	8.50"	8	8	0.875"	0.875"	175	161	41.0
SNR-800600	8"X6"	18.0"	13.5"	11.0"	11.75"	9.50"	8	8	0.875"	0.875"	175	161	42.0
SNR-1000600	10"X6"	18.0"	16.0"	11.0"	14.25"	9.50"	12	8	1.00	0.875"	175	161	49.0
SNR-1000800	10"X8"	18.0"	16.0"	13.5"	14.25"	11.75"	12	8	1.00"	0.875"	175	161	51.0
SNR-1200100	12"X10"	20.0"	19.0"	18.0"	17.00"	14.25"	12	12	1.00"	1.00"	160	147	65.0



Special Notes:

Design:

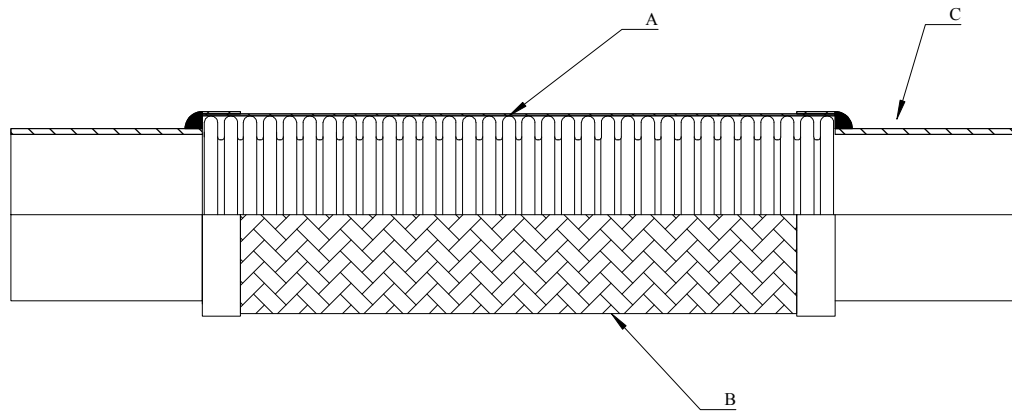
- A) Tube** Bronze
- B) Braid** Bronze
- C) Ends:** Copper Sweat Ends
- Misc.:**
- Temp:** 450 Degrees F
- Axial:** 0.0"
- Lateral** 0.125"

This document is the property of Global-Flex Mfg, and can not be distributed without Global-Flex Mfg. authorization

Global-Flex Mfg.

Qty	GFM Part Number	Size Inches	Overall Length	WORKING PRESSURE		Weight Lbs.
				AT 70F	AT 250F	
	BS-050	1/2	6.5"	699	601	0.30
	BS-075	3/4	7.0"	577	496	0.50
	BS-100	1	8.0"	470	404	0.70
	BS-125	1-1/4	8.5"	361	310	0.90
	BS-150	1-1/2	9.0"	329	282	1.30
	BS-200	2	10.5"	317	272	1.90
	BS-250	2-1/2	12.0"	272	233	3.10
	BS-300	3	12.0"	201	172	4.50

Updated 09-05-2012



Special Notes:

Design:

A) Tube 321 Stainless Steel

B) Braid 304 Stainless Steel

C) Ends: Copper Sweat Ends

Misc.:

Temp: 450 Degrees F

Axial: 0.0"

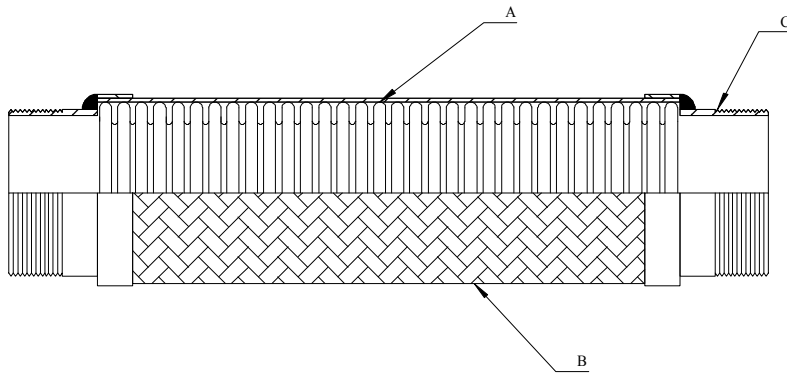
Lateral 0.125"

This document is the property of Global-Flex Mfg, and can not be distributed without Global-Flex Mfg. authorization

Global-Flex Mfg.

Qty	GFM Part Number	Size Inches	Overall Length	WORKING PRESSURE		Weight
				AT 70F	AT 250F	
	SB-050	1/2	6.5"	625	537.5	0.30
	SB-075	3/4	7.0"	625	537.5	1.50
	SB-100	1	8.0"	625	537.5	0.70
	SB-125	1-1/4	8.5"	625	537.5	0.90
	SB-150	1-1/2	9.0"	625	537.5	1.30
	SB-200	2	10.5"	487	418.8	1.90
	SB-250	2-1/2	12.0"	425	365.5	3.10
	SB-300	3	12.0"	375	322.5	4.50

Updated 08-15-2012



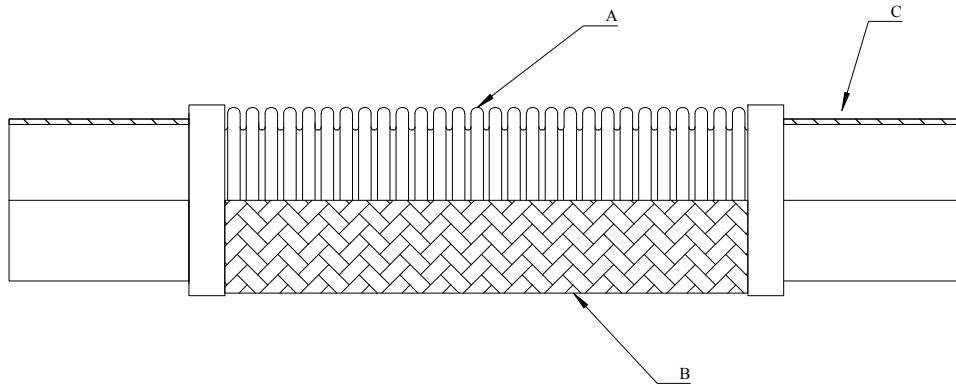
Special Notes:

- Design:**
A) Tube Bronze
B) Braid Bronze
C) Ends: Copper Male Pipe
Misc.:
Temp: 450 Degrees F
Axial: 0.0"
Lateral 0.125"

This document is the property of Global-Flex Mfg, and can not be distributed without Global-Flex Mfg. authorization



Qty	GFM Part Number	Size Inches	Overall Length	WORKING PRESSURE		Weight
				AT 70F	AT 250F	
	BM-050	1/2	6.5	735	632	0.50
	BM-075	3/4	7.0	595	511	0.71
	BM-100	1	8.0	460	395	0.95
	BM-125	1-1/4	8.5	430	369	1.18
	BM-150	1-1/2	9.0	390	335	1.56
	BM-200	2	10.5	280	240	2.24
	BM-250	2-1/2	12.0	185	159	3.50
	BM-300	3	12.0	185	146	4.75



Special Notes:

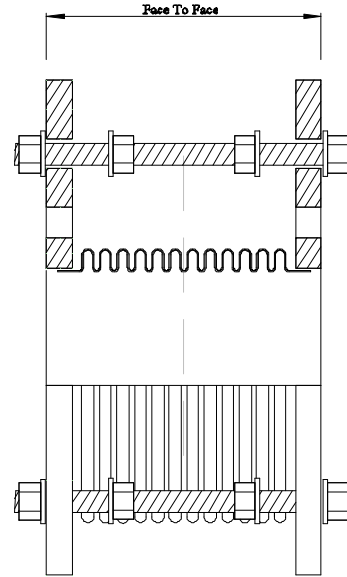
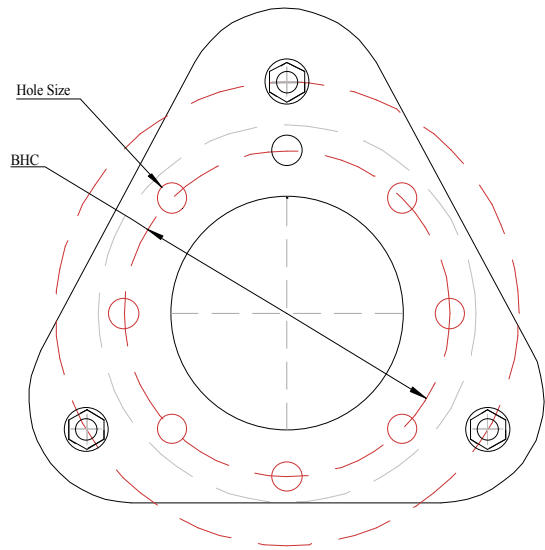
Design:

- A) Tube** Bronze
- B) Braid** Bronze
- C) Ends:** Copper Sweat Ends
- Misc.:** Units are cleaned, dehydrated and sealed in polyethylene bags
- Temp:** 450 Degrees F

This document is the property of Global-Flex Mfg, and can not be distributed without Global-Flex Mfg. authorization



GFM Part Number	Nom. Hose size	To Fit Copper Tubing Actual OD	Overall Length	Working Pressure (PSI)	Weight (Lbs.)
BV-2	.25	.25	7.50"	450	.19
BV-3	.375	.375	8.125"	450	.25
BV-4	.375	.500	9.00"	450	.31
BV-5	.500	.625	9.75"	450	.44
BV-6	.500	.750	10.00"	450	.50
BV-7	.750	.750	11.25"	340	1.00
BV-8	.750	.875	11.50"	340	1.06
BV-9	1.00	1.125	13.00"	302	1.50
BV-10	1.25	1.375	14.75"	280	2.12
BV-11	1.50	1.625	17.00"	245	3.41
BV-12	2.00	2.125	20.00"	190	5.53
BV-13	2.50	2.625	24.00"	320	9.75
BV-14	3.00	3.125	27.00"	302	14.62
BV-15	3.50	3.625	32.00"	150	22.25
BV-16	4.00	4.125	33.00"	150	24.78



Special Notes:

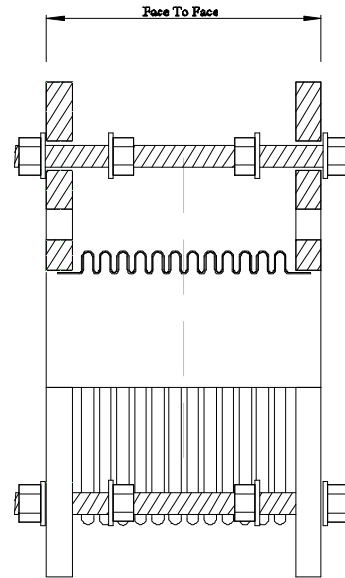
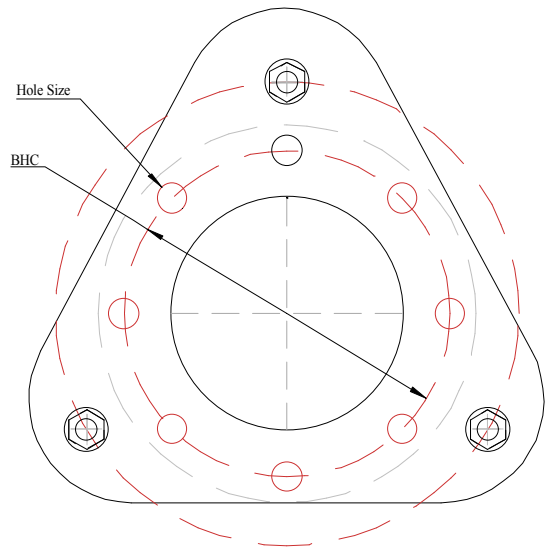
Design:

- Bellows:** 2-ply 304 Stainless Steel
- Tie Rods:** Carbon Steel
- Ends:** 150 lb Carbon Steel
- Misc.:**
- Temp:** 700 Degrees F

This document is the property of Global-Flex Mfg, and can not be distributed without Global-Flex Mfg. authorization



GFM #	Size	Face to Face	BHC	Number Of Holes	Hole Size	Movement Ratings				Pressure @ 70 F	Weight
						Axial Comp	Axial Elong	Lateral	Vacuum		
PB-200	2	4.375	4.75"	4	0.75	0.50	0.125	0.125	Full	225	10.50
PB-250	2-1/2	4.375	5.50"	4	0.75	0.50	0.125	0.125	Full	225	14.50
PB-300	3	4.625	6.00"	4	0.75	0.50	0.125	0.125	Full	225	16.50
PB-400	4	4.625	7.50"	8	0.75	0.50	0.125	0.125	Full	225	26.00
PB-500	5	4.875	8.50"	8	0.875	0.50	0.125	0.125	Full	225	32.00
PB-600	6	5.00	9.50"	8	0.875	0.50	0.125	0.125	Full	225	37.00
PB-800	8	5.875	11.75"	8	0.875	0.50	0.125	0.125	Full	225	65.00
PB-1000	10	6.625	14.25"	12	1.00	0.50	0.125	0.125	Full	225	86.00
PB-1200	12	6.625	17.00"	12	1.00	0.50	0.125	0.125	Full	225	112.00



Special Notes:

Design:

- Bellows:** 2-ply 304 Stainless Steel
- Tie Rods:** Carbon Steel
- Ends:** 150 lb Carbon Steel
- Misc.:**
- Temp:** 700 Degrees F

This document is the property of Global-Flex Mfg, and can not be distributed without Global-Flex Mfg. authorization



GFM #	Size	Face to Face	BHC	Number Of Holes	Hole Size	Movement Ratings				Pressure @ 70 F	Weight
						Axial Comp	Axial Elong	Lateral	Vacuum		
PB-R-200	2	6.00	4.75"	4	0.75	0.9375	0.3125	0.375	Full	225	10.50
PB-R-250	2-1/2	6.00	5.50"	4	0.75	0.9375	0.3125	0.3.125	Full	225	14.50
PB-R-300	3	6.00	6.00'	4	0.75	0.9375	0.2125	0.250	Full	225	16.50
PB-R-400	4	6.00	7.50"	8	0.75	0.9375	0.3125	0.1875	Full	225	26.00
PB-R-500	5	6.00	8.50"	8	0.875	0.9375	0.3125	0.1875	Full	225	32.00
PB-R-600	6	6.00	9.50"	8	0.875	0.9375	0.3125	0.125	Full	225	37.00
PB-R-800	8	6.00	11.75"	8	0.875	0.750	0.250	0.0937	Full	225	65.00
PB-R-1000	10	8.00	14.25"	12	1.00	1.25	0.375	0.125	Full	225	86.00
PB-R-1200	12	8.00	17.00"	12	1.00	1.25	0.375	0.125	Full	225	112.00