

Once

M I L A N O

2024

HOMEWARE COLLECTION





Once Milano is an Italian company specialising in high-quality linen products designed to 'dress' the home. Founded in 2012, Once Milano offers sophisticated and modern collections, using fine linens, elegant details and that unique craftsmanship so deeply rooted in the Italian territory.

The brand's philosophy is encapsulated in the name itself: to create timeless products, designed as it once was, without compromising on quality.

Once Milano's collections range from table linens to bed and bath linens.

Recently introduced is the Loungewear collection in linen, in which luxury and functionality come together perfectly to create comfortable, yet elegant garments.

Craftsmanship, refined detailing and the process of garment dyeing are the flagships of Once Milano, adding softness to fabrics, depth to color nuances and uniqueness to each product, combined with the possibility of endless customisations.

Under the passionate creative direction of Allegra Marchiorello and the solid enthusiasm of a dedicated team, Once Milano has grown over the past decade to great international appreciation, also thanks to numerous interesting collaborations with interior designers specialising in the exploration of new patterns, prints, colours and hand printing.

To date, collaborations include a collection with Studiopepe, a bed and loungewear collection with Studio Toogood and a bed collection with de Gournay.

The brand's sartorial approach has also fostered partnerships with international luxury hotels (Six Senses, Jashita, Borgo Sant'Andrea, L'Albereta), private clubs (Maison Estelle) and wedding & event planners, with the aim of bringing that sense of uniqueness typical of handmade products to a mise en scène where every detail matters.

Once  
M I L A N O



B E D



quilt

100% linen - 165gr/sqm  
inner filling polyester - 400gr/sqm

double-sided

sizes and colours from page 48



new wavy linen blanket

100% linen - 165gr/sqm

inner filling polyester - 240gr/sqm

sizes and colours from page 48



linen blanket with piping

100% linen - 165gr/sqm

inner filling polyester - 200gr/sqm

sizes and colours from page 48



linen blanket with b/w check pattern

top side - 100% linen - 160gr/sqm  
bottom side - 100% linen - 165gr/sqm  
inner filling polyester - 200gr/sqm  
sizes and colours from page 48



dotted linen blanket

100% linen - 165gr/sqm  
inner filling polyester - 200gr/sqm  
sizes and colours from page 48



bed cover with piping or sewing

100% heavy linen - 380gr/sqm

sizes and colours from page 48





bed cover with fringe

100% heavy linen - 280gr/sqm

fringe height 11cm

sizes and colours from page 48



bed cover with black piping or sewing

100% heavy linen - 380gr/sqm

sizes and colours from page 48



top sheet with sicily lace

100% linen - 165gr/sqm

lace height 4,5cm

sizes and colours from page 48



pillowcase with sicily lace

100% linen - 165gr/sqm

sold as set of 2

lace height 4,5cm

sizes and colours from page 48



pillowcase with piping

100% linen - 165gr/sqm

sold as set of 2

sizes and colours from page 48

top sheet with piping

100% linen - 165gr/sqm

sizes and colours from page 48



bolster pillow

100% linen - 165gr/sqm

inner filling polyester - 400gr/sqm

sizes and colours from page 48



square pillowcase

100% linen - 165gr/sqm

sold as set of 2

sizes and colours from page 48



cushion

100% linen - 165gr/sqm

sold as set of 2

sizes and colours from page 48



pillowcase

100% linen - 165gr/sqm

sold as set of 2

sizes and colours from page 48



fitted sheet

100% linen - 165gr/sqm

sizes and colours from page 48



duvet cover

100% linen - 165gr/sqm

sizes and colours from page 48



top sheet

100% linen - 165gr/sqm

sizes and colours from page 48



tasseled throw

100% linen - 210gr/sqm

sizes and colours from page 48



canvas linen throw

100% heavy linen - 350gr/sqm

sizes and colours from page 48



cashmere and silk throw

50% linen - 35% cashmere - 15% silk

sizes and colours from page 48





baby mat

top side 100% linen - 165gr/sqm  
inner filling polyester - 120gr/sqm  
bottom side 100% nylon

sizes and colours from page 48



picnic mat

top side 100% linen - 165gr/sqm  
inner filling polyester - 120gr/sqm  
bottom side 100% nylon

sizes and colours from page 48

Once  
M I L A N O



T A B L E   A N D   K I T C H E N



tablecloth with extra long fringe

100% linen - 165gr/sqm

fringe height 13cm

sizes and colours from page 48



tablecloth with short fringe

100% linen - 165gr/sqm

fringe height 4cm

sizes and colours from page 48



tablecloth with sicily lace

100% linen - 165gr/sqm

lace height 4,5cm

sizes and colours from page 48



tablecloth with large border

100% linen - 165gr/sqm

hem height 12cm

sizes and colours from page 48



tablecloth with macramé

100% linen - 165gr/sqm with macramé

lace height 6,5cm

see sizes and colours from page 48



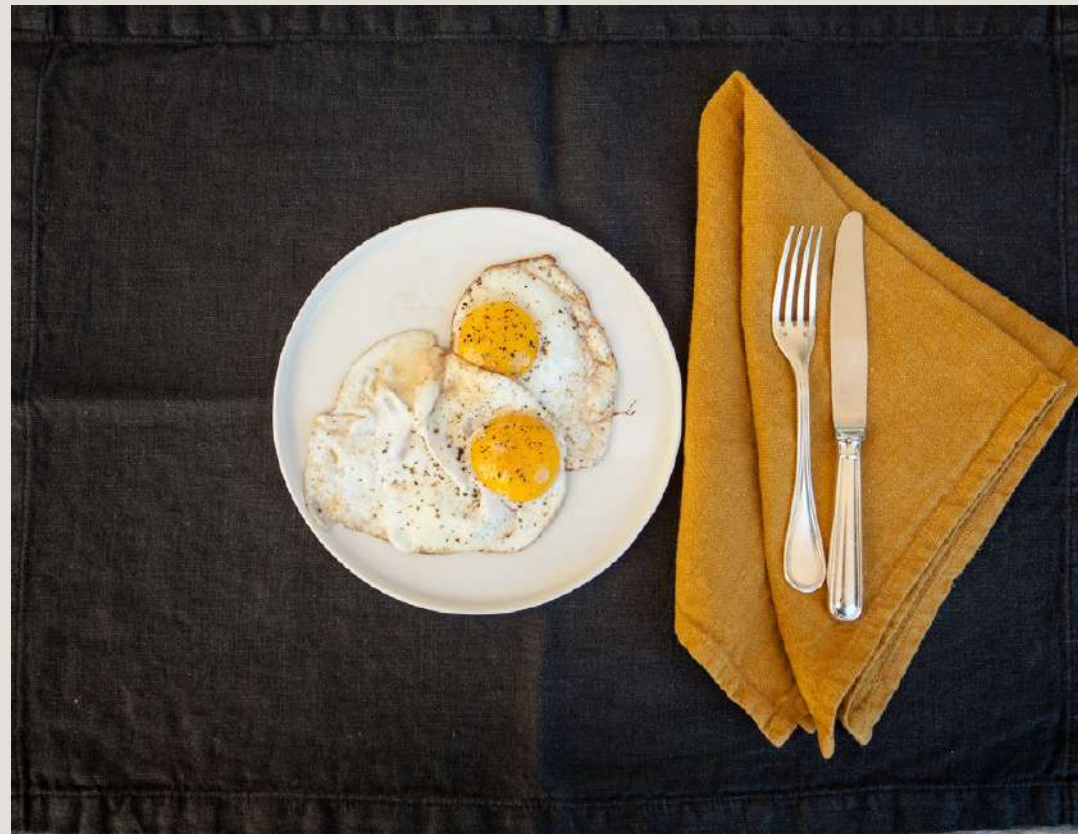
round placemat

100% linen - 165gr/sqm - large  
100% heavy linen - 280gr/sqm - medium  
100% heavy linen - 280gr/sqm - small

wooden support - sold separately  
(available in large - medium - small)

sold as set of 2

sizes and colours from page 48



placemat

100% heavy linen - 280gr/sqm

sold as set of 2

sizes and colours from page 48



runner

100% heavy linen - 280gr/sqm

sizes and colours from page 48



runner with b/w check pattern

100% linen - 160gr/sqm

sizes and colours from page 48



napkin with rolled hem

100% linen - 165gr/sqm

sold as set of 4

sizes and colours from page 48



napkin with long fringe

100% linen - 165gr/sqm

fringe height 6cm

sold as set of 4

sizes and colours from page 48



napkin with sicily lace

100% linen - 165gr/sqm

lace height 4,5cm

sold as set of 4

sizes and colours from page 48



napkin with macramé

100% linen - 165gr/sqm

lace height 2,5cm

sold as set of 4

sizes and colours from page 48





napkin with short fringe

100% linen - 165gr/sqm

fringe height 4cm

sold as set of 4

sizes and colours from page 48



napkin with b/w check pattern

100% linen - 160gr/sqm

sold as set of 4

sizes and colours from page 48



napkin with fringing

100% heavy linen - 280gr/sqm

sold as set of 4

sizes and colours from page 48



scalloped napkin

100% linen - 165gr/sqm

sold as set of 4

matching placemats available on demand

sizes and colours from page 48



napkin

100% linen - 165gr/sqm

sold as set of 4

sizes and colours from page 48

cocktail napkin

100% linen - 165gr/sqm

sold as set of 4

sizes and colours from page 48

napkin

100% heavy linen - 280gr/sqm

sold as set of 4

sizes and colours from page 48



dishcloth gaufré

100% linen - 165gr/sqm

with loop

sizes and colours from page 48

apron

100% heavy linen - 280gr/sqm

with front pocket and herringbone tie

sizes and colours from page 48

dishcloth

100% heavy linen - 280gr/sqm

with loop

sizes and colours from page 48

Once  
M I L A N O



BATH



canvas linen towel with piping

100% linen - 350gr/sqm

sizes and colours from page 48



towel with long fringe

100% linen - 165gr/sqm

long fringe on one end  
fringe height 6cm

sizes and colours from page 48



hand towel

100% heavy linen - 280gr/sqm  
sold as set of 4  
sizes and colours from page 48



towel

100% heavy linen - 280gr/sqm  
sizes and colours from page 48

Once  
M I L A N O



ACCESSORIES





weekend bag

100% heavy linen - 280gr/sqm

sizes and colours from page 48



frida bag

100% cotton - 600gr/sqm

sizes and colours from page 48



clutch

100% heavy linen - 280gr/sqm  
sizes and colours from page 48



pochette

100% heavy linen - 280gr/sqm  
sizes and colours from page 48



kimono

100% linen - 165gr/sqm

sizes and colours from page 48



dressing gown

100% linen - 165gr/sqm

sizes and colours from page 48



dishcloth

100% linen - 165gr/sqm

with loop

sizes and colours from page 48

tablecloth

100% linen - 165gr/sqm

sizes and colours from page 48

napkin

100% linen - 165gr/sqm

sold as set of 4

sizes and colours from page 48



blanket

100% linen - 165gr/sqm

inner filling polyester - 200gr/sqm

sizes and colours from page 48

Once  
M I L A N O



VELVET



tablecloth with velvet border and natural linen

100% linen 175gr/sqm - velvet (82% viscose 18% silk)

sizes and colours from page 48



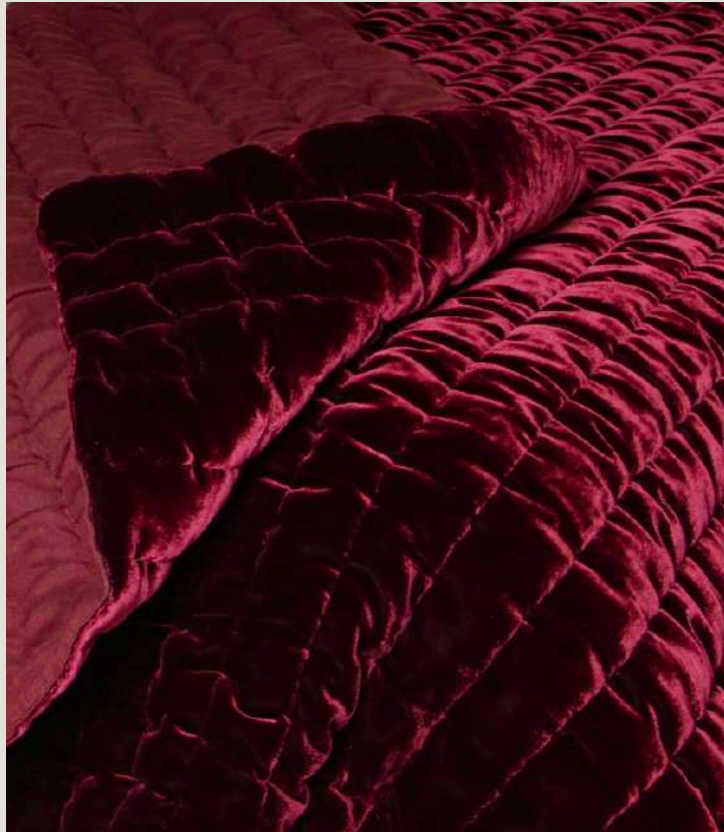
velvet round placemat

velvet (82% viscose 18% silk)

wooden support - sold separately  
(available in large - medium)

sold as set of 2

sizes and colours from page 48



velvet and linen wavy blanket

top velvet (82% viscose 18% silk)  
bottom 100% linen - 165 gr/sqm  
poly filling 200gr/sqm

sizes and colours from page 48



velvet and linen cushion

top velvet (82% viscose 18% silk)  
bottom 100% linen - 165 gr/sqm  
sizes and colours from page 48



velvet and natural linen blanket

top velvet (82% viscose 18% silk)  
bottom 100% linen - 165 gr/sqm  
poly filling 200gr/sqm

sizes and colours from page 48





velvet dressing gown

velvet (82% viscose 18% silk)

sizes and colours from page 48



velvet clutch

100% cotton velvet - 450 gr/sqm

sizes and colours from page 48

Once  
M I L A N O

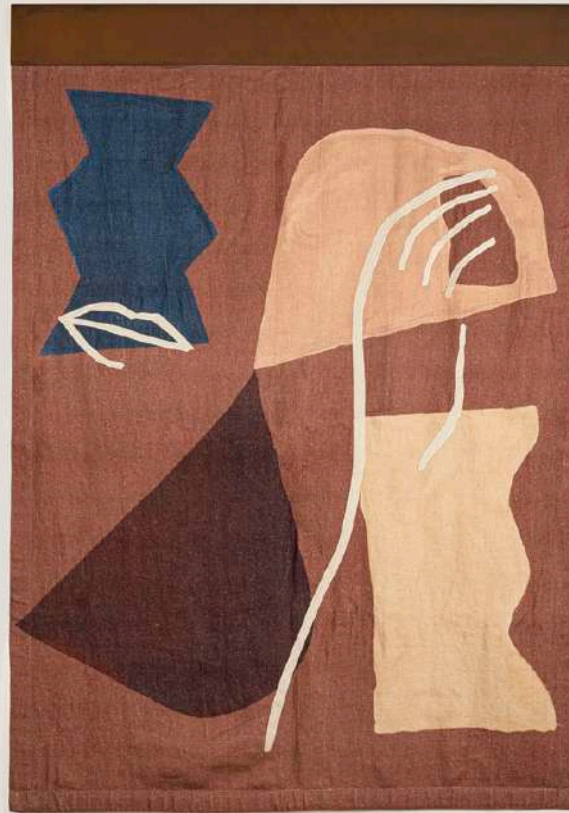


STUDIOPEPE COLLABORATION



wall hanging  
sibylle collection

printed heavy linen 585gr/sqm  
sizes and colours from page 48



wall hanging  
sibylle collection

printed heavy linen 585gr/sqm  
sizes and colours from page 48



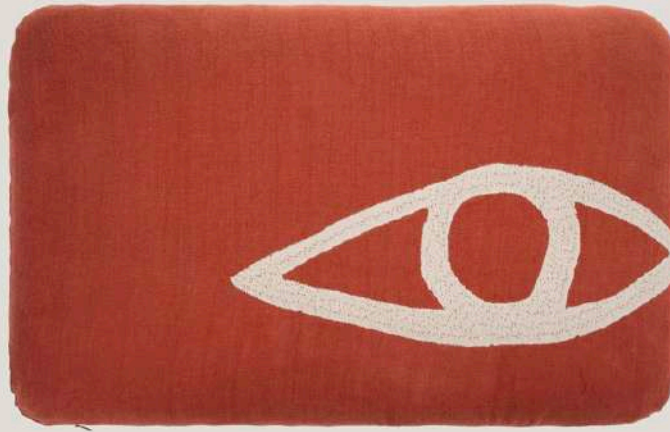
wall hanging  
sibylle collection

printed heavy linen 585gr/sqm  
sizes and colours from page 48



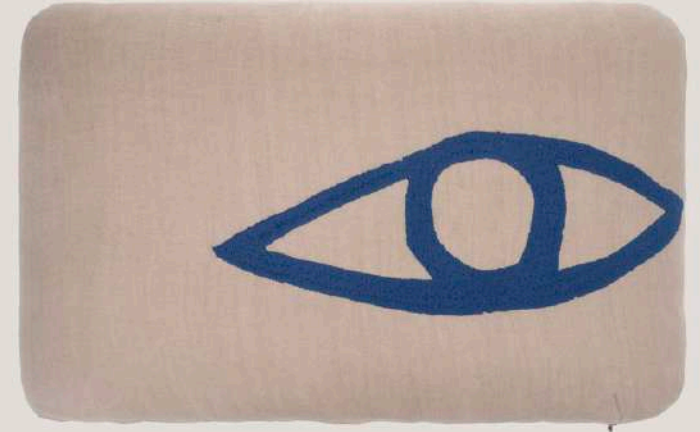
rounded cushion  
sibylle collection

100% heavy linen 280gr/sqm  
sizes and colours from page 48



rounded cushion  
sibylle collection

100% heavy linen 280gr/sqm  
sizes and colours from page 48



rounded cushion  
sibylle collection

100% heavy linen 280gr/sqm  
sizes and colours from page 48



Once Milano's made to measure service ranges from embroidery to the application of monograms, estate or private yacht motifs and family emblems, up to helping discerning clients to choose among sizes, colours, fabrics and finishes for the creation of unique products.

Important international names, from hotels and Michelin starred restaurants to interior decoration specialists, have chosen Once Milano to produce their private label collections. For us, they are testament of our commitment to our Italian handmade creativity and the manufacturing expertise with which we work to ensure the highest quality to our customers.



Customization is the ultimate personalized luxury. Whether required by interior designers, wedding&events planners or private clients, limited editions and exclusive products are more and more meeting the market's need for bespoke experiences.

We invite you to connect with us for a consultation on this exquisite journey of customisation: our experienced team will work hand-in-hand with you in creating the linens of your dreams.

For some of our made to measure items a minimum order quantity could be required.



### packaging

- cardboard box with window (35x24x3cm) - (14x9x1in)
- cardboard box with window (40x32x16cm) - (16x13x6in)
- cardboard box (40x44x7cm) - (16x17x3in)



### linen envelope

100% linen - 165gr/sqm

- small (30x34cm) 12x13in)
- medium (35x45cm) - (14x18in)
- large (44x55x10cm) - (17x22x4in)
- xxl (80x70x10cm) - (32x28x4in)

available in all colours

HOMEWARE COLLECTION



forest



green



mint



cream



stone blue



light blue



natural



white



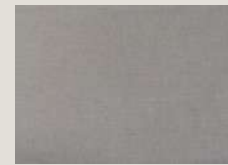
wine



vintage pink



charcoal



taupe



sequoia



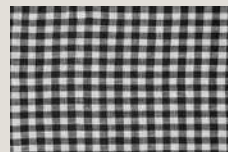
mustard



yellow



hay



b/w check

Quilts available only in cream, hay, mint, green, yellow, mustard, vintage pink, light blue and charcoal  
Piping available only in white, natural, hay, mustard, mint, stone blue, light blue and vintage pink



VELVET COLLECTION



brown



bordeaux



green



gold

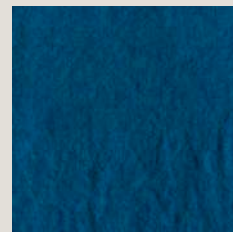
BESPOKE COLOURS



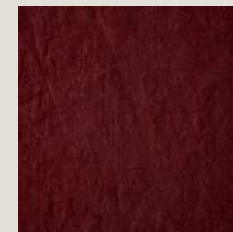
black



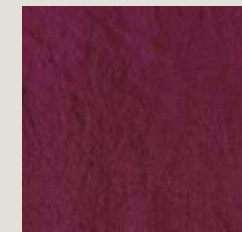
night blue



petrol blue



bordeaux



fuchsia



mud



nude



powder pink



sage



moss

For request of items in bespoke colours, a surcharge from Euro 150 to Euro 220 will be applied  
Bespoke colours can be applied to any item of the Homeware collection, except for 'Quilts'  
For any enquiry regarding bespoke items, contact [info@oncemilano.com](mailto:info@oncemilano.com)

**page 4: quilt**

single (140x210cm) - (55x82in)  
super king (260x220cm) - (102x86in)

top side: available in cream, hay, yellow, mustard, light blue, charcoal, mint, green, vintage pink, b/w check

bottom side: natural



**page 5: new wavy linen blanket**

single (140x220cm) - (55x86in)  
super king (260x220cm) - (102x86in)

available in all colours except natural and b/w check

top and bottom same colour



**page 6: linen blanket with piping\***

cot (80x120cm) - (31x47in)  
single (140x220cm) - (55x86in)  
twin (170x220cm) - (67x86in)  
queen (235x230cm) - (92x90in)  
eastern king (274x235cm) - (108x92in)  
super king (260x220cm) - (102x86in)

top side: available in all colours  
bottom side: natural

for piping colours see page 48



**page 7 (left): linen blanket with b/w check pattern**

single (140x220cm) - (55x86in)  
super king (260x220cm) - (102x86in)

top side: b/w check  
bottom side: natural



**page 7 (right): dotted linen blanket\***

single (140x220cm) - (55x86in)  
super king (260x220cm) - (102x86in)

top side: available in all colours except white, natural and b/w check  
bottom side: natural



**page 8: bed cover with piping or sewing\***

super king (260x220cm) - (102x86in)  
queen (256x280cm) - (100x110in)  
eastern king (305x285cm) - (120x112in)

colours upon request  
sewing/piping tor-sur-ton



**page 9 (left): bed cover with fringe\***

super king (260x220cm) - (102x86in)  
queen (256x280cm) - (100x110in)  
eastern king (305x285cm) - (120x112in)

size excludes fringe height, to be added on three sides

available in all colours except natural and b/w check



**page 9 (right): bed cover with black piping or sewing\***

super king (260x220cm) - (102x86in)  
queen (256x280cm) - (100x110in)  
eastern king (305x285cm) - (120x112in)

available in white with black details



**page 10 (left): top sheet with sicily lace\***

single (180x270cm) - (71x106in)  
king (250x270cm) - (98x106in)  
super king (280x270cm) - (110x106in)  
twin (180x270cm) - (71x106in)  
queen (243x270cm) - (95x106in)  
eastern king (290x270cm) - (114x106in)  
california (280x290cm) - (110x114in)

size excludes lace height

available in all colours except natural and b/w check



**page 10 (right): pillowcase with sicily lace\***

standard (50x75cm) - (20x30in)  
king (51x91cm) - (20x36in)  
deluxe (69x91cm) - (27x36in)

size excludes lace height

available in all colours except natural and b/w check



**page 11 (left): pillowcase with piping\***

standard (50x75cm) - (20x30in)  
square (65x65cm) - (25x25in)  
cushion (35x55cm) - (14x22in)  
king (51x91cm) - (20x36in)  
deluxe (69x91cm) - (27x36in)

available in all colours  
for piping colours see page 48



**page 11 (right): top sheet with piping\***

cot (100x120cm) - (39x47in)  
single (180x270cm) - (71x106in)  
king (250x270cm) - (98x106in)  
super king (280x270cm) - (110x106in)  
twin (180x270cm) - (71x106in)  
queen (243x270cm) - (96x106in)  
eastern king (290x270cm) - (114x106in)  
california (280x290cm) - (110x114in)

available in all colours  
for piping colours see page 48



**page 12: bolster pillow**

one size  
length (80cm) - (31in)  
diameter (18cm) - (7in)

available in all colours except b/w check



**page 13 (left): square pillowcase\***

one size  
(65x65cm) - (25x25in)

available in all colours



**page 13 (middle): cushion\***

one size  
(35x55cm) - (14x22in)

available in all colours



**page 13 (right): pillowcase\***

standard (50x75cm) - (20x30in)  
king (51x91cm) - (20x36in)  
deluxe (69x91cm) - (27x36in)

available in all colours



**Page 14 (left): fitted sheet\***

single (90x190cm) - (35x75in)  
king (160x200cm) - (63x79in)  
super king (180x200cm) - (71x79in)  
twin (100x190cm) - (39x75in)  
queen (150x200cm) - (59x79in)  
eastern king (198x203cm) - (78x80in)  
california (183x214cm) - (72x84in)

available in all colours except b/w check



**Page 14 (middle): duvet cover\***

single (140x200cm) - (55x79in)  
king (220x220cm) - (86x86in)  
super king (240x220cm) - (94x86in)  
twin (173x220cm) - (68x86in)  
queen (235x230cm) - (92x90in)  
eastern king (274x235cm) - (108x92in)  
california (274x235cm) - (108x92in)

available in all colours except b/w check



**Page 14 (right): top sheet\***

single (180x270cm) - (71x106in)  
king (250x270cm) - (98x106in)  
super king (280x270cm) - (110x106in)  
twin (180x270cm) - (71x106in)  
queen (243x270cm) - (96x106in)  
eastern king (290x270cm) - (114x106in)  
california (280x290cm) - (110x114in)

available in all colours except b/w check



**page 15: tasseled throw**

one size  
(130x230cm) - (51x90in)

available in all colours except b/w check



**page 16 (left): canvas linen throw**

one size  
(140x230cm) - (55x90in)

available in all colours except b/w check



**page 19 (left): tablecloth with extra long fringe\***

medium (175x260cm) - (69x102in)  
large (190x330cm) - (75x129in)

size excludes fringe height, to be added on all sides

available in all colours except natural, b/w check



**page 20 (right): tablecloth with macramé\***

medium (175x260cm) - (69x102in)  
large (190x330cm) - (75x129in)

size excludes macramé height, to be added on all sides

available in all colours except natural, b/w check



**page 22 (right): runner with b/w check pattern\***

one size  
(45x150cm) - (18x59in)

available in b/w check



**Page 24 (right): napkin with macramé\***

one size  
(45x45cm) - (18x18in)

size excludes macramé height, to be added on all sides

available in all colours except natural, b/w check



**page 16 (right): cashmere and silk throw**

one size  
(145x190cm) - (57x75inch)

available in white and light blue



**page 19 (right): tablecloth with short fringe\***

medium (175x260cm) - (69x102in)  
large (190x330cm) - (75x129in)

size excludes fringe height, to be added on all sides

available in white and cream with white fringe



**page 21 (left): round placemat**

large (39cm diameter) - (15in)  
medium (32cm diameter) - (13in)  
small (24cm diameter) - (10in)

available in all colours except b/w check



**Page 23: napkin with rolled hem\***

one size  
(48x48cm) - (19x19in)

linen and rolled hem available in all colours



**Page 25 (left): napkin with short fringe\***

one size  
(45x45cm) - (18x18in)

size excludes fringe height, to be added on all sides

available in white and cream with white fringe



**page 17 (left): baby mat**

one size  
(145x210cm) - (57x82in)

available in all colours



**page 20 (left): tablecloth with sicily lace\***

medium (175x260cm) - (69x102in)  
large (190x330cm) - (75x129in)

size excludes lace height, to be added on all sides

available in all colours except natural, b/w check



**page 21 (right): placemat\***

one size  
(40x55cm) - (16x22in)

available in all colours except b/w check



**page 24 (left): napkin with long fringe\***

one size  
(45x45cm) - (18x18in)

size excludes fringe height, to be added on all sides

available in all colours except natural, b/w check



**Page 25 (right): napkin with b/w check pattern\***

one size  
(45x45cm) - (18x18in)

available in b/w check



**page 17 (right): picnic mat**

one size  
(145x210cm) - (57x82in)

available in all colours



**page 20 (middle): tablecloth with large border\***

medium (175x260cm) - (69x102in)  
large (190x330cm) - (75x129in)  
square (220x220cm) - (86x86in)

available in all colours except b/w check



**page 22 (left): runner\***

one size  
(60x170cm) - (24x67in)

available in all colours except b/w check



**page 24 (middle): napkin with sicily lace\***

one size  
(45x45cm) - (18x18in)

size excludes lace height, to be added on all sides

available in all colours except natural, b/w check



**page 26 (left): napkin with fringing\***

one size  
(45x45cm) - (18x18in)

available in all colours except b/w check





**page 26 (right): scalloped napkin**

one size  
(48x48cm) - (19x19in)

linen and scalloped hem available in all colours except b/w check



**page 28 (left): dishcloth gaufré**

one size  
(60x70cm) - (24x28in)

available in all colours except natural, b/w check



**page 30 (right): towel with long fringe\***

towel set (40x60cm and 60x100cm) - (16x24in and 24x40in)  
bath sheet (100x135cm) - (39x53in)

size excludes fringe height, to be added on one side

available in all colours except natural, b/w check



**page 33 (right): frida bag**

one size  
(60x40cm) - (24x16in)

available in all colours except natural and b/w check



**page 35 (right): dressing gown**

S/M (EU42)  
M/L (EU44)

available in white, beige, mustard, vintage pink, bordeaux, mint, light blue, night blue and black



**page 27 (left): napkin\***

one size  
(45x45cm) - (18x18in)

available in all colours



**page 28 (middle): apron**

one size  
(92x95cm) - (36x37in)

available in all colours except b/w check



**page 31 (left): hand towel\***

one size  
(30x40cm) - (12x16in)

available in all colours except b/w check



**page 34 (left): clutch**

one size  
(30x15x7cm) - (12x6x3in)

available in brown/beige and in light blue/beige



**page 36 (left): dishcloth**

one size  
(60x70cm) - (24x28in)

available in white and blue chess printed pattern



**page 27 (middle): cocktail napkin\***

one size  
(22x22cm) - (9x9in)

available in all colours

rolled hem available in all colours except b/w check



**page 28 (right): dishcloth\***

one size  
(60x70cm) - (24x28in)

available in all colours except b/w check



**page 31 (right): towel\***

towel set (40x60cm and 60x100cm) - (16x24in and 24x40in)  
bath sheet (100x135cm) - (39x53in)

available in all colours except natural, b/w check



**page 34 (right): pochette**

medium (26x19x7cm) - (10x7x3in)  
large (30x21x12cm) - (12x8x5in)

available in all colours except b/w check



**page 36 (middle): tablecloth**

medium (175x260cm) - (69x102in)

available in white and blue chess printed pattern



**page 27 (right): napkin\***

one size  
(45x45cm) - (18x18in)

available in all colours except b/w check



**page 30 (left): canvas linen towel with piping\***

towel set (40x60cm and 60x100cm) - (16x24in and 24x40in)  
bath sheet (100x135cm) - (39x53in)

available in white and natural with dark blue or dark bordeaux polyester piping



**page 33 (left): weekend bag**

one size  
(60x70cm) - (24x28in)

available in all colours except natural, b/w check



**page 35 (left): kimono**

one size  
available in white, beige, mint, light blue, night blue and black



**page 36 (right): napkin**

one size  
(45x45cm) - (18x18in)

available in white and blue chess printed pattern



**\* bespoke sizes on demand**

**page 37: blanket**

single (140x210cm) - (55x82in)

available in white and blue chess printed pattern



**page 40 (middle): velvet and linen cushion\***

one size  
(35x55cm) - (14x22in)

top available in bordeaux, gold, brown and green  
bottom available in natural or ton-sur-ton with the velvet top



**page 43 (left): wall hanging**

one size  
(136x190cm) - (54x75in)

available in pink background with bordeaux wool embroidery  
iron bar



**page 44 (middle): rounded cushion**

one size  
(60x40cm) - (24x16in)

available in bordeaux with taupe wool embroidery



**page 39 (left): tablecloth with velvet and natural linen**

medium (175x260cm) - (69x102in)  
large (190x330cm) - (75x129in)

available in bordeaux, gold, brown and green



**page 40 (right): velvet and natural linen blanket\***

one size  
(135x220cm) - (53x86in)

top available in bordeaux, gold, brown and green  
bottom available in natural



**page 43 (middle): wall hanging**

one size  
(136x190cm) - (54x75in)

available in bordeaux background with beige wool embroidery  
iron bar



**page 44 (right): rounded cushion**

one size  
(60x40cm) - (24x16in)

available in taupe with cobalt blue wool embroidery



**page 39 (right): velvet round placemat**

large (39cm diameter) - (15in)  
medium (32cm diameter) - (13in)

available in bordeaux, gold, brown and green



**page 41 (left): velvet dressing gown**

S/M (EU42)  
M/L (EU44)

available in bordeaux, gold, brown and green



**page 43 (right): wall hanging**

one size  
(136x190cm) - (54x75in)

available in cream background with black wool embroidery  
iron bar



**page 40 (left): velvet and linen wavy blanket**

one size  
(135x220cm) - (53x86in)

available in dark red (with bordeaux linen bottom) and brown (with brown linen bottom)



**page 41 (right): velvet clutch**

one size  
(30x15x7cm) - (12x6x3in)

available in vintage pink, grey, black, sage, bordeaux



**page 44 (left): rounded cushion**

one size  
(60x40cm) - (24x16in)

available in vintage pink with bordeaux wool embroidery





Once  
M I L A N O

w: [oncemilano.com](http://oncemilano.com)

e: [info@oncemilano.com](mailto:info@oncemilano.com)

t: +39 0423 468941