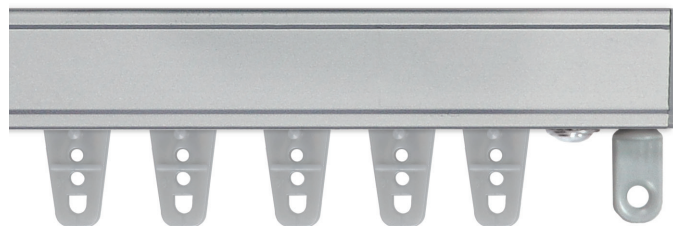
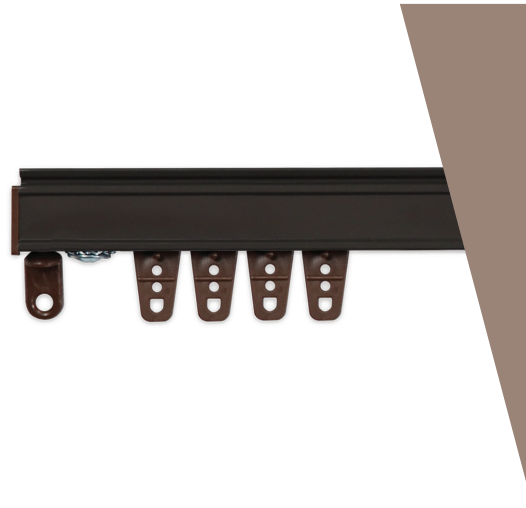


 KIRSCH®



ARCHITRAC®



P R A C T I C A L

# *Precision*

A perfect union of efficiency and performance, it's no wonder Architrac® can be found in such a variety of spaces. From homes, businesses and commercial applications, Architrac® offers multiple configurable styles to suit your needs and exceed your expectations. This performance focused product will glide through your most demanding applications with ease.

# OVERVIEW & BENEFITS

## Why Architrac®?

The Architrac® heading system supports three popular drapery heading styles. Outstanding functionality for commercial applications, versatile enough for residential applications, Architrac® delivers performance for the most demanding applications. All assembled sets come complete and ready-to-install, and are available in baton and cord draw systems.

## Benefits & Features

---

### Ripplefold™

- Panels can be pressed flat, yet fall into folds
- Headings are suspended under the track
- No hooks or pins to install
- Stack back space is less than conventional Pleated draperies
- Draperies snap on and off carriers for easy installation
- Interior drapery appearance is identical to exterior-facing drapery appearance

### Pleated

- Can be used with most track systems using slip-in or pin-on hooks
- Headings can be suspended under the track or over the face of the track to conceal hardware
- A popular drapery heading style

### Cubicle

- An excellent choice for where privacy is necessary; perfect for hospitals or extended care facilities
- Smooth, snag free operation
- Made of extruded aluminum for extra durability
- Inner surface is center grooved for easy installation

# Architrac® at a Glance

To help determine which system is right for your project, use the guideline below to select the best fit.

ARCHITRAC SERIES	94001 BEST SELLER	93001	94003	94004 BEST SELLER	94005	9046	9600
------------------	----------------------	-------	-------	----------------------	-------	------	------

## What is your preferred Draw type?

Cord Draw	•	•					
Hand   Baton Draw	•	•	•	•	•	•	•
Briza™ Motorized   NEW	•						

## What is the preferred Drapery Heading type?

Pleated	•	•	•	•	•	•	•
Cubicle			•	•	•	•	•
Ripplefold™	•	•	•	•	•		

## What is your mounting location?

Ceiling Mount	•	•	•	•	•	•	•
Wall Mount	•	•	•				•
Recessed Mount	•	•	•	•	•	•	•
Suspension Mount						•	•

## Is an Angular Bend or Curve needed?

Can be bent	•	•	•		•	•	•
Can be curved	•	•	•		•	•	•

## What is the Track Length?

One-Way Draw   Max Track Length	UP TO 20'	UP TO 16'	UP TO 20'	UP TO 16'	UP TO 16'	UP TO 16'	UP TO 20'
Two-Way Draw   Max Track Length	UP TO 40'	UP TO 32'	UP TO 40'	UP TO 32'	UP TO 32'	UP TO 32'	UP TO 40'

## What are the Fabric Weight requirements?

One-Way   Pounds Per Linear Foot	4 LBS	2 LBS	4 LBS	4 LBS	4 LBS	4 LBS	4 LBS
Two-Way   Pounds Per Linear Foot	4 LBS	2 LBS	4 LBS	4 LBS	4 LBS	4 LBS	4 LBS

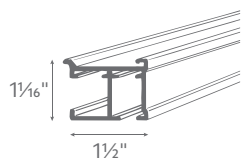
# ARCHITRAC®

## Series 94001 | Cord Draw System

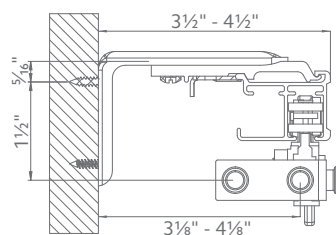
- Assembled sets includes all necessary components
- Most versatile cord draw track
- Heavy duty, ball bearing pulleys
- Heavy duty, wheeled (Ripplefold™) or ball bearing (pleated) carriers
- Can be curved or bent
- Wall or ceiling mount available
- Multiple draw options available
- Briza™ Motorization available

### Additional Information

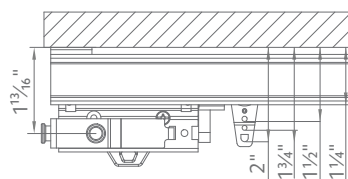
#### DIMENSIONS



#### WALL MOUNT



#### CEILING MOUNT



DRAW	MOUNT	MAXIMUM TRACK SET	MAXIMUM FABRIC WEIGHT PER PULLEY	LBS. PER DRAPERY FOOT
ONE-WAY	CEILING   WALL   RECESSED	20'	80 LBS. PER PULLEY	4 LBS.
TWO-WAY	CEILING   WALL   RECESSED	40'	160 LBS. PER PULLEY	4 LBS.

#### AVAILABLE BENDS



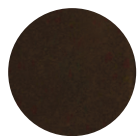
### Available Colors



White



Anodized

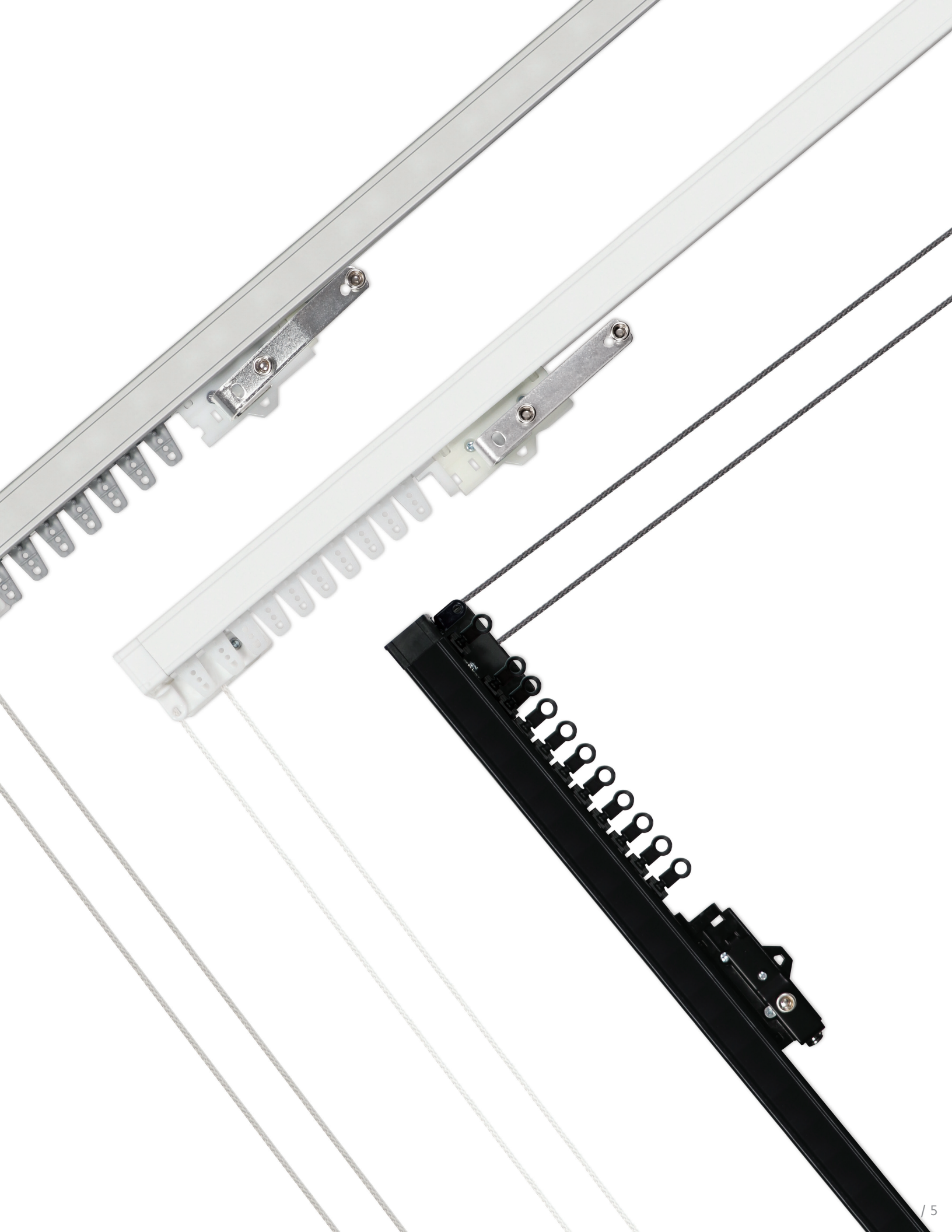


Bronze



Black





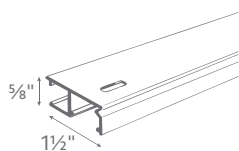
# ARCHITRAC®

## Series 93001 | Cord Draw System

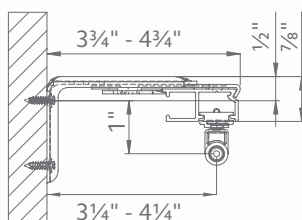
- Assembled set includes all necessary components
- Low profile track (5/8")
- Self lubricating end pulleys
- Front loading carriers for easy installation
- Can be curved or bend
- Wall or ceiling mount available

### Additional Information

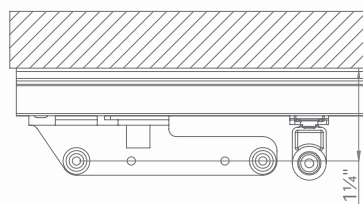
#### DIMENSIONS



#### WALL MOUNT



#### CEILING MOUNT



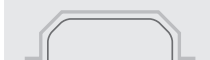
DRAW	MOUNT	MAXIMUM TRACK SET	MAXIMUM FABRIC WEIGHT	LBS. PER DRAPERY FOOT
ONE-WAY	CEILING   WALL   RECESSED	16'	32 LBS. PER PULLEY	2 LBS.
TWO-WAY	CEILING   WALL   RECESSED	32'	64 LBS. PER PULLEY	2 LBS.

#### AVAILABLE BENDS

Style 1: Recess



Style 2: Bow



Style 3: Bay



Style 4: Corner



Style 5: Curve



### Available Colors



White





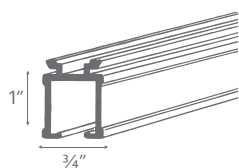
# ARCHITRAC®

## Series 94003 | Baton Draw System

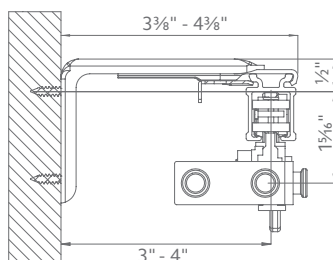
- Assembled sets includes all necessary components
- Most versatile baton draw track
- Heavy duty, wheeled (Ripplefold™) or ball bearing (pleated) carriers
- Can be curved or bent
- Wall or ceiling mount available
- Baton options available

### Additional Information

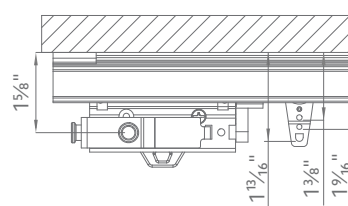
#### DIMENSIONS



#### WALL MOUNT



#### CEILING MOUNT



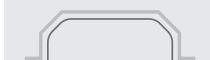
DRAW	MOUNT	MAXIMUM TRACK SET	MAXIMUM FABRIC WEIGHT	LBS. PER DRAPERY FOOT
ONE-WAY	CEILING   WALL   RECESSED	20'	80 LBS. PER PULLEY	4 LBS.
TWO-WAY	CEILING   WALL   RECESSED	40'	160 LBS. PER PULLEY	4 LBS.

#### AVAILABLE BENDS

Style 1: Recess



Style 2: Bow



Style 3: Bay



Style 4: Corner



Style 5: Curve



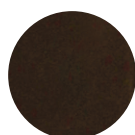
### Available Colors



White



Anodized



Bronze



Black





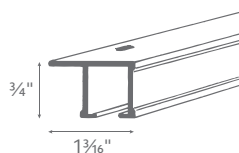
# ARCHITRAC®

## Series 94004 | Baton Draw System

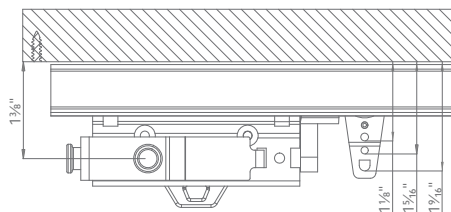
- Assembled sets includes all necessary components
- Low profile, baton draw rod (3/4")
- Heavy duty, wheeled (Ripplefold™) or ball bearing (pleated) carriers
- Cannot be curved or bent
- Ceiling mount only (Track pre-drilled 16" on center for direct ceiling mount)
- Baton options available

### Additional Information

#### DIMENSIONS



#### CEILING MOUNT



DRAW	MOUNT	MAXIMUM TRACK SET	MAXIMUM FABRIC WEIGHT	LBS. PER DRAPERY FOOT
ONE-WAY	CEILING   RECESSED	16'	64 LBS. PER PULLEY	4 LBS.
TWO-WAY	CEILING   RECESSED	32'	128 LBS. PER PULLEY	4LBS.

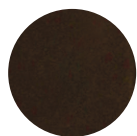
### Available Colors



White



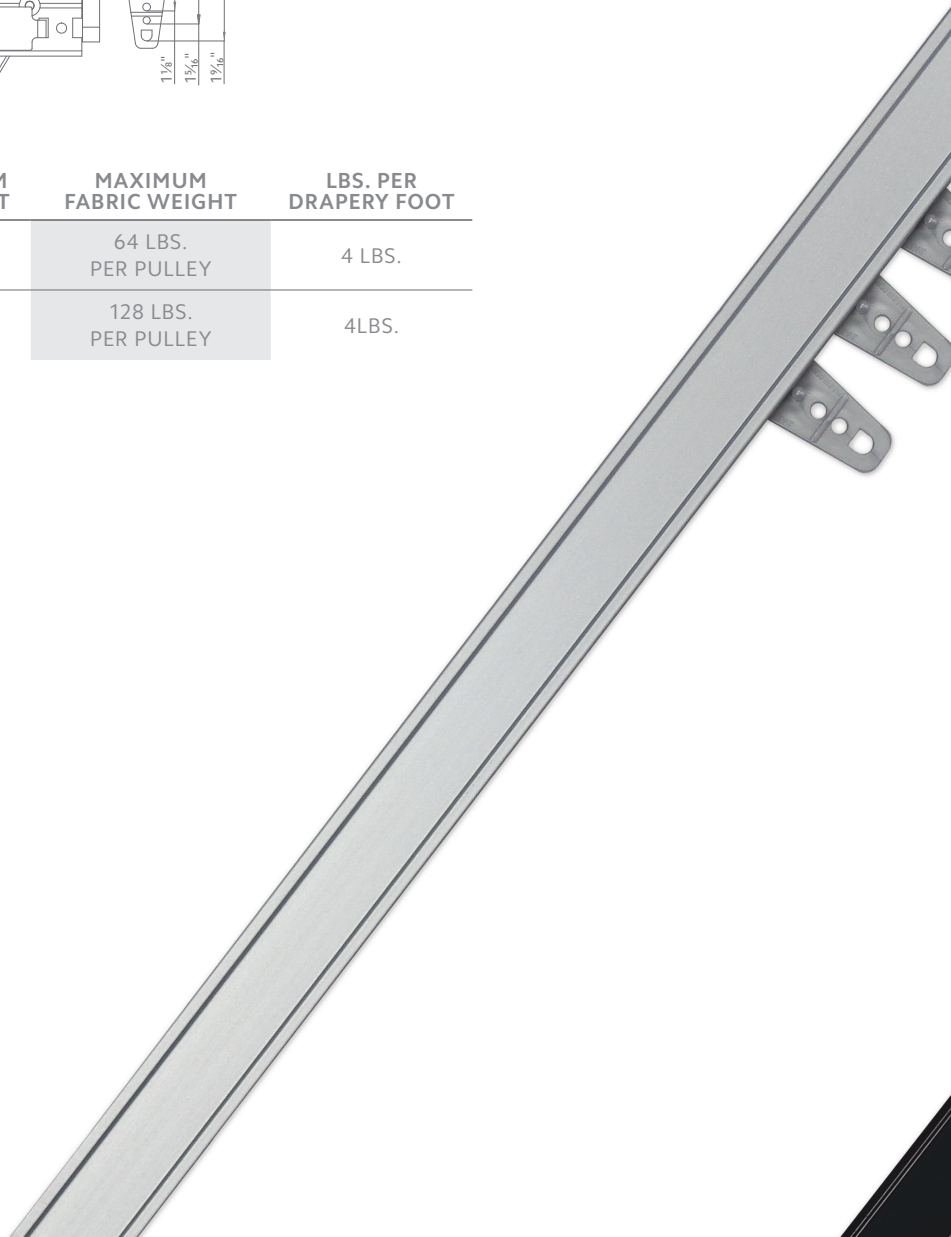
Anodized

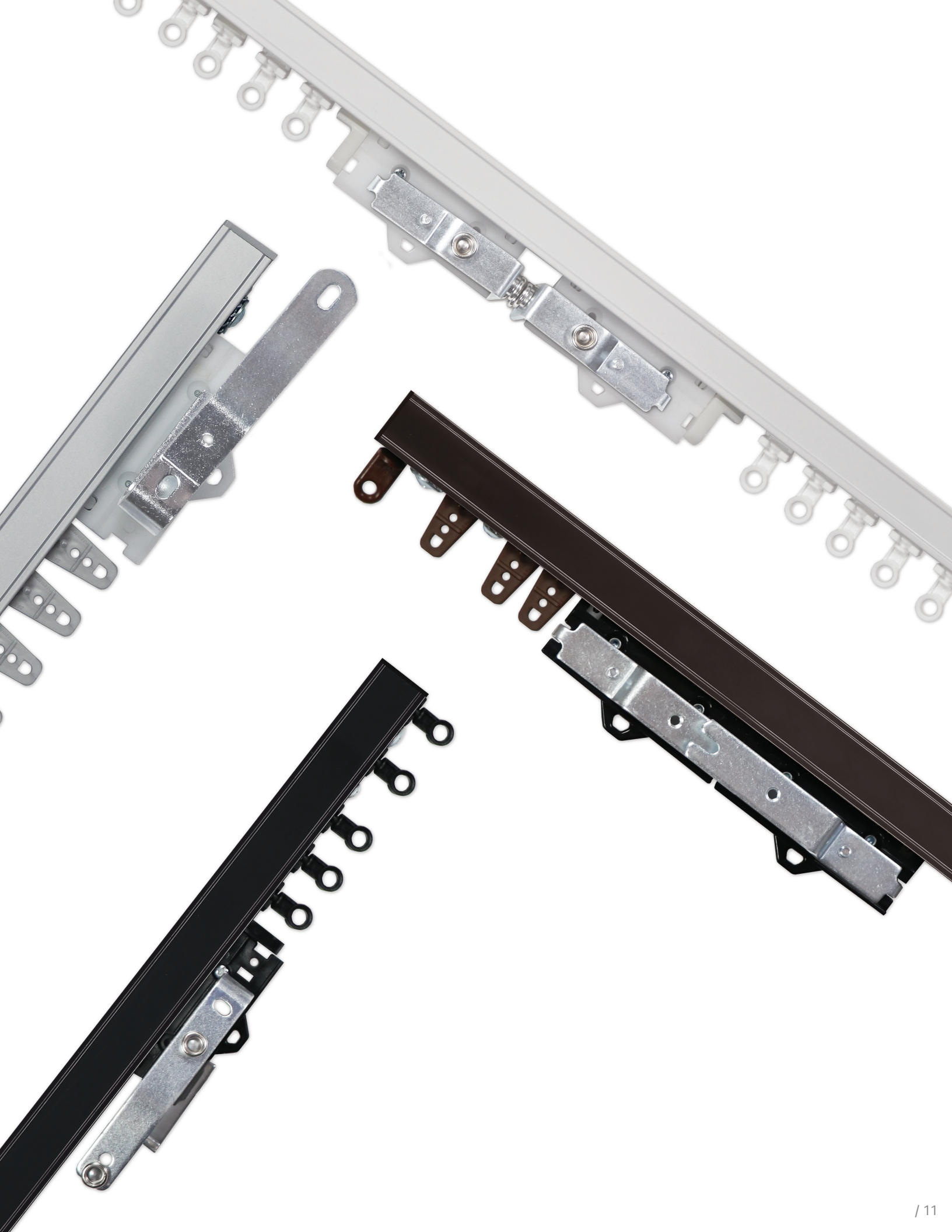


Bronze



Black





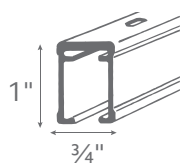
# ARCHITRAC®

## Series 94005 | Baton Draw System

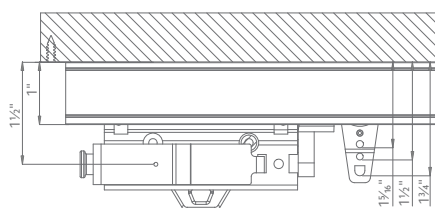
- Assembled sets includes all necessary components
- Heavy duty, wheeled (Ripplefold™) or ball bearing (pleated) carriers
- Can be curved or bent
- Ceiling mount only (Track pre-drilled 16" on center for direct ceiling mount)
- Baton options available

### Additional Information

#### DIMENSIONS



#### CEILING MOUNT



DRAW	MOUNT	MAXIMUM TRACK SET	MAXIMUM FABRIC WEIGHT PER PULLEY	LBS. PER DRAPERY FOOT
ONE-WAY	CEILING   RECESSED	16'	64 LBS. PER PULLEY	4 LBS.
TWO-WAY	CEILING   RECESSED	32'	128 LBS. PER PULLEY	4 LBS.

#### AVAILABLE BENDS



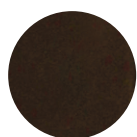
### Available Colors



White



Anodized



Bronze



Black



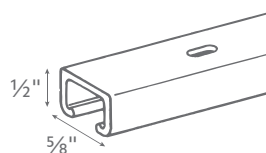
# ARCHITRAC®

## Series 9046 | Cubicle System

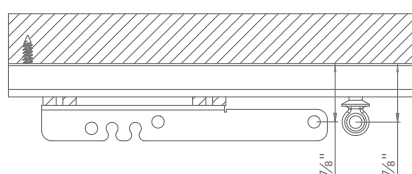
- Assembled sets includes all necessary components
- Low profile, cubicle track (1/2")
- Ideal for cubicle curtains for commercial applications
- Can be curved or bent
- Baton options available

### Additional Information

#### DIMENSIONS



#### CEILING MOUNT



DRAW	MOUNT	MAXIMUM TRACK SET	MAXIMUM FABRIC WEIGHT	LBS. PER DRAPERY FOOT
ONE-WAY	CEILING   RECESSED   SUSPENSION	16'	64 LBS. PER PULLEY	4 LBS.
TWO-WAY	CEILING   RECESSED   SUSPENSION	32'	128 LBS. PER PULLEY	4 LBS.

#### AVAILABLE BENDS



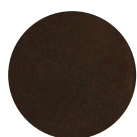
### Available Colors



White



Anodized



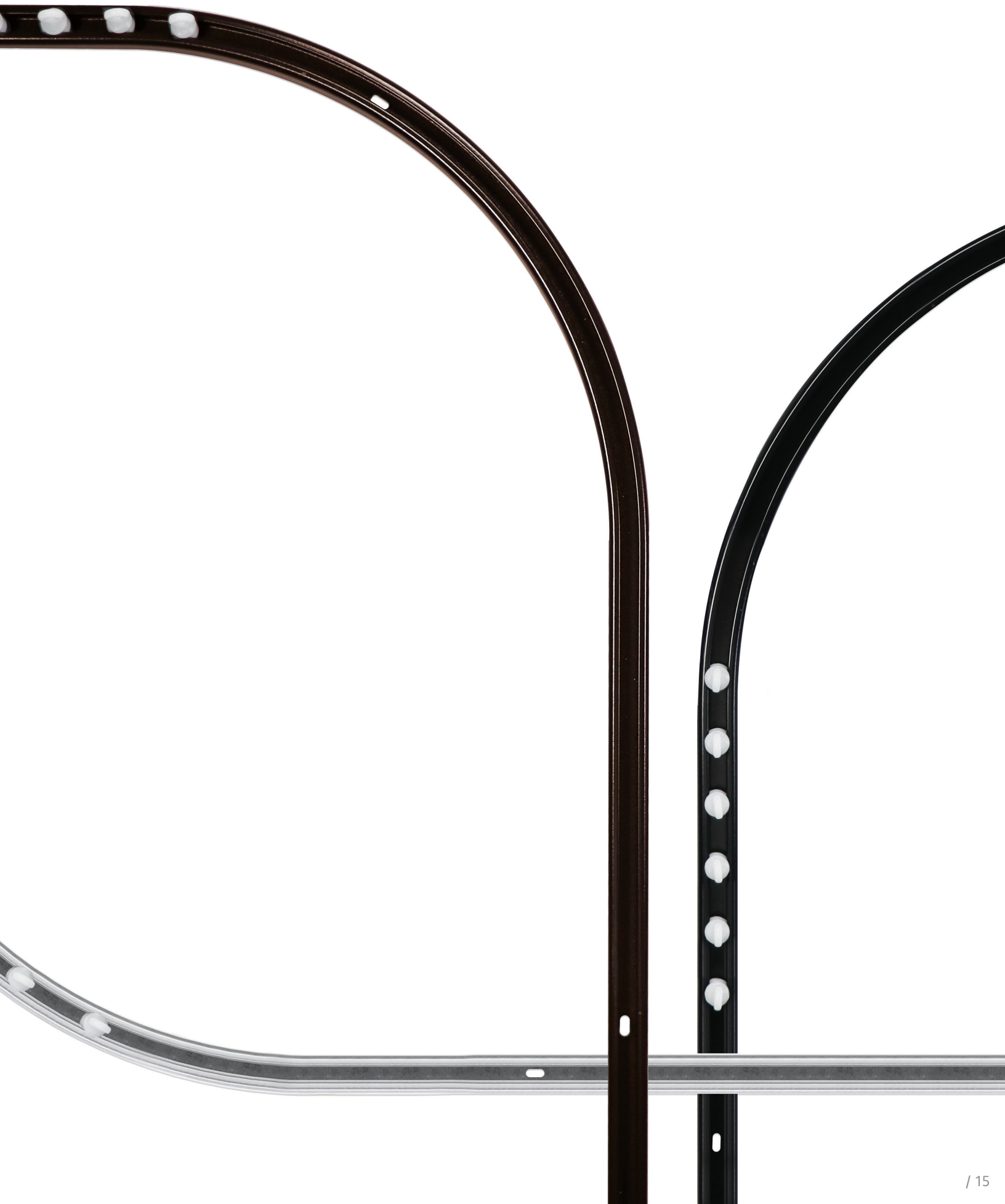
Bronze



Black







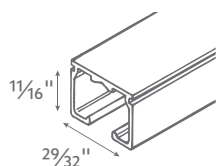
# ARCHITRAC®

## Series 9600 | Cubicle System

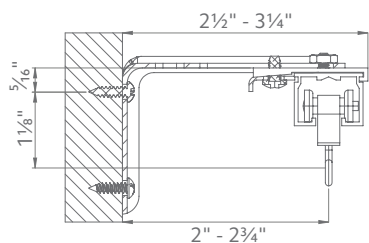
- Assembled sets includes all necessary components
- Heavy duty, cubicle track
- Ideal for cubicle curtains for commercial applications
- Splice available
- Carrier options available
- Wall, ceiling or suspension mount available
- Can be curved or bent

### Additional Information

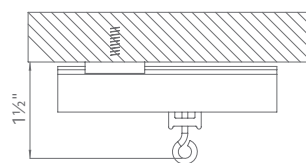
#### DIMENSIONS



#### WALL MOUNT



#### CEILING MOUNT



DRAW	MOUNT	MAXIMUM TRACK SET	MAXIMUM FABRIC WEIGHT PER PULLEY	LBS. PER DRAPERY FOOT
ONE-WAY	CEILING   WALL   RECESSED   SUSPENSION	20'	80 LBS. PER PULLEY	4 LBS.
TWO-WAY	CEILING   WALL   RECESSED   SUSPENSION	40'	160 LBS. PER PULLEY	4 LBS.

#### AVAILABLE BENDS



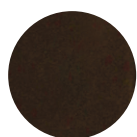
### Available Colors



White



Anodized



Bronze



Black



 KIRSCH®

BUCKINGHAM®  
redefining luxury

DESIGNER METALS™  
inspiring brilliance

WOOD TRENDS™  
renewing traditions

WROUGHT IRON  
forging artistry

RENAISSANCE™  
awakening perfection