



**Bongardi Corporate**



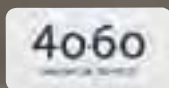
Bongardi Corporate is a leading Australian supplier of corporate clothing, with a rich history in the design and manufacture of superior business suiting since 1925.

We pride ourselves on our attention to detail in order to supply the perfect garment for every person and industry. We source innovative quality, easy care fabrics and on-trend designs that give superior fit and comfort.

Every Bongardi garment is designed for maximum comfort and fit with a variety of styles to cater for women and men of all ages and sizes. Women's sizes range from 4-30, plus there is an extensive range of men's sizing.

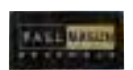
Bongardi Corporate has introduced a new range of unique fabrics. These fabrics have been sourced for perfect suitability to corporate clothing. These breathable, lightweight, wash-and-wear fabrics offer outstanding quality and wear characteristics.

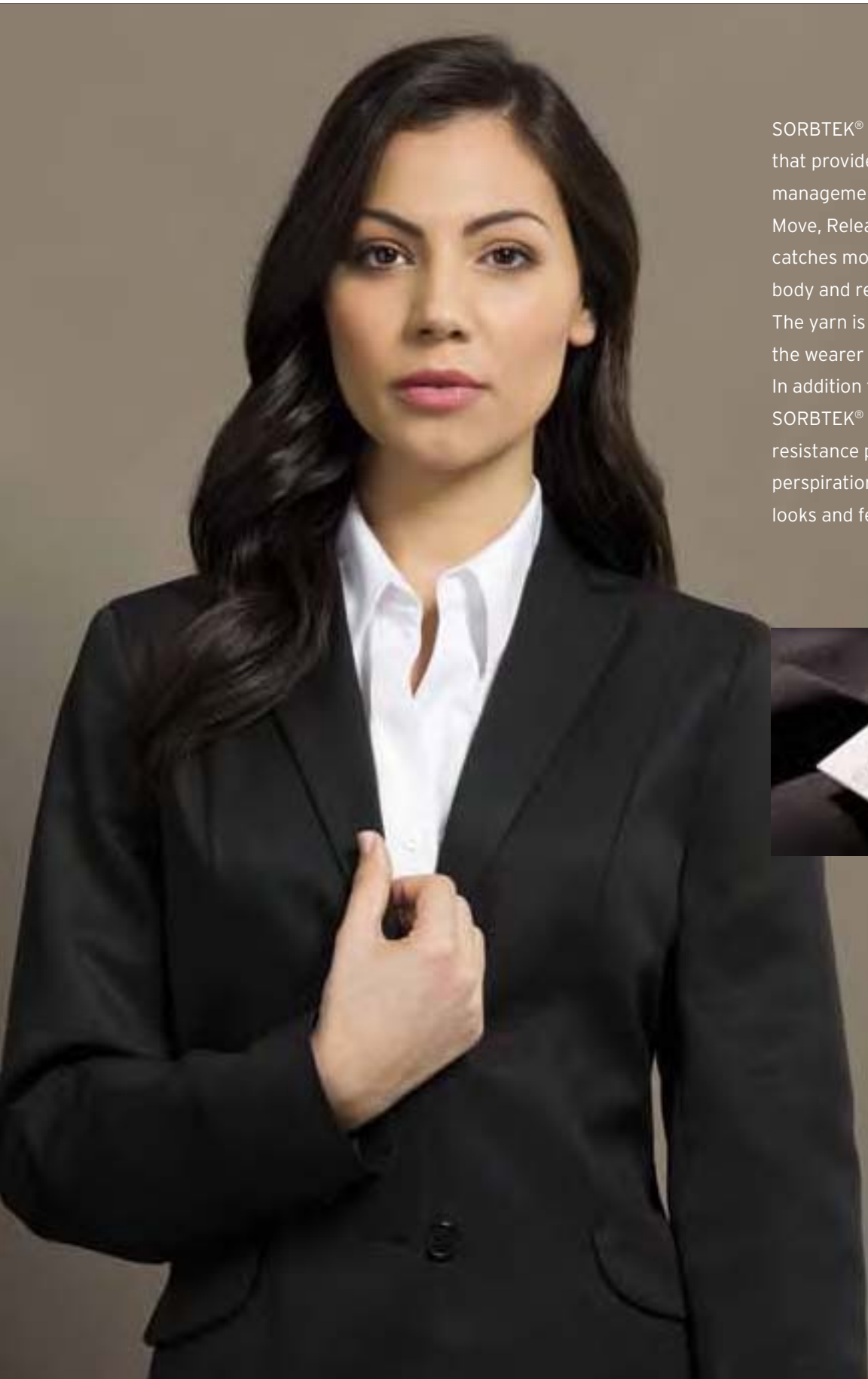
All fabrics are manufactured in fully accredited mills adhering to stringent standards, including the Oeko-Tex Standard 100 which independently tests for a range of items including potentially harmful substances in textiles. All Bongardi Corporate garment suppliers also adhere to international standards for wages and conditions for its workers. So you can be assured that your Bongardi Corporate garment is both ethically and environmentally sound.



# contents

<b>Sorbtek®</b>	<b>4</b>
SORBTEK® is a high performance fabric that provides permanent moisture management.	
<b>4.0.6.0®</b>	<b>10</b>
Combining the feel and style of wool with the durability and wear of polyester for a superior fashion fabric	
<b>Healthcare</b>	<b>16</b>
Our new range of garments incorporates many design features specifically for the Healthcare industry.	
<b>Men's</b>	<b>20</b>
Classic fits and suit separates allow you to size up or down and offer a wide range of fittings .	
<b>Women's Style Diagrams</b>	<b>24</b>
Complete range of women's wear simply illustrated.	
<b>Size Information</b>	<b>26</b>
Easy guide to sizing and measuring.	





SORBTEK® is a high performance fabric that provides permanent moisture management through its propriety...Catch, Move, Release technology. SORBTEK® catches moisture, moves it away from the body and releases it for quick evaporation. The yarn is breathable, which leaves the wearer cool, dry and comfortable. In addition to moisture management, SORBTEK® offers inherent superior wear resistance properties protecting against perspiration and grime. So your garment looks and feels great even longer.



**Jacket**

Code	JK35-992
Description	2 button fully featured jacket
Colours	Black, Navy, Charcoal
Sizes	6 - 30

# SORBTEK®



**Jacket**

Code JK46-992  
Description 1 button  
shawl collar  
Colours Black, Navy,  
Charcoal  
Sizes 6 - 24



**Pant**

Code PA39-992  
Description Mid-rise narrow leg pant  
Colours Black, Navy, Charcoal  
Sizes 6 - 24

**Jacket**

Code JK46-992  
Description 1 button  
shawl collar  
Colours Black, Navy,  
Charcoal  
Sizes 6 - 24



**Skirt**

Code SK45-992  
Description A-line flat front  
Colours Black, Navy,  
Charcoal  
Sizes 6 - 24



1



2



3



**1 Skirt**

Code SK29-992  
 Description Low-rise box pleat skirt  
 Colours **Black, Navy, Charcoal**  
 Sizes 6 - 30

**2 Skirt**

Code SK01-992  
 Description Short skirt  
 Colours **Black, Navy, Charcoal**  
 Sizes 6 - 24

**3 Jacket**

Code JK35-992  
 Description 2 button fully featured jacket  
 Colours **Black, Navy, Charcoal**  
 Sizes 6 - 30

**Skirt**

Code SK45-992  
 Description A-line flat front  
 Colours **Black, Navy, Charcoal**  
 Sizes 6 - 24



**Pant**  
 Code PA16-992  
 Description Low-rise bootleg pant  
 Colours Black, Navy, Charcoal  
 Sizes 6 - 24



**Pant**  
 Code PA17-992  
 Description Ladies short  
 Colours Black, Navy, Charcoal  
 Sizes 6 - 24



**Pant**  
 Code PA18-992  
 Description Ladies 3/4 Capri pant  
 Colours Black, Navy, Charcoal  
 Sizes 6 - 24



**Pant**  
 Code PA20-992  
 Description Low-rise slimline pant  
 Colours Black, Navy, Charcoal  
 Sizes 6 - 24



**Pant**  
 Code PA22-992  
 Description Slimline pant with flexi waist  
 Colours Black, Navy, Charcoal  
 Sizes 6 - 24



**Pant**  
 Code PA30-992  
 Description Classic cut high fuller fit  
 Colours Black, Navy, Charcoal  
 Sizes 6 - 30



**Pant**  
 Code PA39-992  
 Description Mid-rise narrow leg pant  
 Colours Black, Navy, Charcoal  
 Sizes 6 - 24



1

**1 Jacket**  
 Code JK46-992  
 Description 1 button shawl collar  
 Colours Black, Navy, **Charcoal**  
 Sizes 6 - 24

**Pant**  
 Code PA39-992  
 Description Mid-rise narrow leg pant  
 Colours Black, Navy, **Charcoal**  
 Sizes 6 - 24



2

**2 Jacket**  
 Code JK35-992  
 Description 2 button fully featured jacket  
 Colours Black, **Navy**, Charcoal  
 Sizes 6 - 30



3

**3 Vest**  
 Code VE36-992  
 Description 4 button low cut with adjustable back  
 Colours **Black**, Navy, Charcoal  
 Sizes 6 - 24







**Dress**

Code	DR40-992
Description	Cap sleeve dress
Colours	Black, Navy, <b>Charcoal</b>
Sizes	6 - 24



**Dress**

Code	DR41-992
Description	Sleeveless dress
Colours	<b>Black</b> , Navy, Charcoal
Sizes	6 - 24



This newly developed fabric comprises a 40% wool 60% polyester 'Mechanical Stretch' mix. Combining the feel and style of wool with the durability and wear of polyester, for a superior fashion fabric.

The 4.0.6.0 fabric has been laboratory tested exceeding every industry benchmark for colour fastness, shrinkage and a range of other tests relating to the suitability for corporate wear.

Pants and skirts are suitable for domestic wool cycle machine washing. All skirts and jackets offer the additional benefit of a mechanical stretch lining for further ease of movement. The jackets also include an internal zipper for ease of embroidery.



**Jacket**

Code	JK35-4060
Description	2 button fully featured with stretch lining
Colours	Black, Navy, <b>Charcoal</b>
Sizes	4 - 30

4.0.6.0®



**Jacket**

Code JK46-4060  
Description 1 button shawl collar with stretch lining  
Colours Black, Navy, Charcoal  
Sizes 6 - 26

**Skirt**

Code SK45-4060  
Description A-line flat front  
Colours Black, Navy, Charcoal  
Sizes 6 - 26



**Jacket**

Code SC2-4060  
Description 40% Wool 60% polyester mechanical stretch 2 button jacket with stretch lining  
Colours Black, Navy, Charcoal  
Sizes 92 reg - 142 reg, 97 long - 127 long, 92 short - 142 short

**Pant**

Code TR0-4060  
Description 40% wool 60% polyester mechanical stretch, flat front pant with flexi waist  
Colours Black, Navy, Charcoal  
Sizes 72 reg - 117 reg, 87 short - 132 short



1



2



3



**1 Vest**

Code VE36-4060  
 Description 4 button low cut with adjustable back  
 Colours **Black, Navy, Charcoal**  
 Sizes 6 - 24

**2 Jacket**

Code JK35-4060  
 Description 2 button fully featured with stretch lining  
 Colours **Black, Navy, Charcoal**  
 Sizes 4 - 30

**3 Jacket**

Code JK46-4060  
 Description 1 button shawl collar with stretch lining  
 Colours **Black, Navy, Charcoal**  
 Sizes 6 - 26

**Pant**

Code PA39-4060  
 Description Mid-rise narrow leg  
 Colours **Black, Navy, Charcoal**  
 Sizes 4 - 24





**Pant**  
 Code PA20-4060  
 Description Low-rise slimline pant  
 Colours **Black**, Navy, Charcoal  
 Sizes 4 - 30

**Pant**  
 Code PA22-4060  
 Description Slimline pant with flexi waist  
 Colours **Black**, Navy, Charcoal  
 Sizes 4 - 30

**Pant**  
 Code PA30-4060  
 Description Classic cut high fuller fit  
 Colours **Black**, Navy, Charcoal  
 Sizes 4 - 30

**Pant**  
 Code PA39-4060  
 Description Mid-rise narrow leg pant  
 Colours **Black**, Navy, **Charcoal**  
 Sizes 4 - 24



1

**1 Skirt**  
 Code SK29-4060  
 Description Low-rise box pleat  
 Colours **Black**, Navy, Charcoal  
 Sizes 4 - 30



2

**2 Skirt**  
 Code SK45-4060  
 Description A-line flat front  
 Colours **Black**, Navy, Charcoal  
 Sizes 6 - 26



1

**1 Dress**  
Code DR40-4060  
Description Cap sleeve dress  
Colours Black, Navy, **Charcoal**  
Sizes 6-24



2

**2 Dress**  
Code DR41-4060  
Description Sleeveless dress  
Colours **Black**, Navy, Charcoal  
Sizes 6-24





**Jacket**

Code SC2-4060  
 Description 40% wool 60% polyester mechanical stretch 2 button jacket with stretch lining  
 Colours **Black, Navy, Charcoal**  
 Sizes 92 reg - 142 reg, 97 long - 127 long, 92 short - 142 short

**Pant**

Code TR0-4060  
 Description 40% wool 60% polyester mechanical stretch, flat front pant with flexi waist  
 Colours **Black, Navy, Charcoal**  
 Sizes 72 reg - 117 reg, 87 short - 132 short

**Vest**

Code VE-4060  
 Description Men's adjustable back 6 button vest  
 Colours **Black, Navy, Charcoal**  
 Sizes 92 reg - 132 reg

**Pant**

Code TR0-4060  
 Description 40% wool 60% polyester mechanical stretch, flat front pant with flexi waist  
 Colours **Black, Navy, Charcoal**  
 Sizes 72 reg - 117 reg, 87 short - 132 short

**Pant**

Code TR0-4060  
 Description 40% wool 60% polyester mechanical stretch, flat front pant with flexi waist  
 Colours **Black, Navy, Charcoal**  
 Sizes 72 reg - 117 reg, 87 short - 132 short



We understand the very special needs of the Healthcare industry. So our new range of garments incorporate many design features that set Bongardi Corporate apart.

Our new 80% polyester 20% rayon fabric has been specifically developed for a highly professional appearance whilst being easy care and lightweight with a soft feel for ultimate comfort.

We have incorporated a number of practical and innovative design features into many of the garments. These include deeper pockets, side tabs for I.D. badges and keys along with pen and phone pocket inserts. Innovations that make Bongardi Corporate the ideal choice.

#### Skirt

Code	SK32-896
Description	3 gore flared skirt
Colours	Black, Navy, Charcoal
Sizes	4 - 30

Healthcare

# Healthcare

AND WORK PLACE ESSENTIALS





**Pant**

Code PA31-896  
Description Flexi waist with pen and phone pockets  
Colours **Black, Navy, Charcoal**  
Sizes 4 - 30

**Pant**

Code TRO-896 Bongardi Corporate  
Description Health care pant with flexi waist, phone pocket and 6cm hem  
Colours **Black, Navy, Charcoal**  
Sizes 72 reg - 102 reg, 87 short - 122 short



**1 Skirt**

Code SK43-896  
 Description Skort - culottes short with a wrap over skirt  
 Colours Black, Navy, Charcoal  
 Sizes 6 - 28

**2 Skirt**

Code SK32-896  
 Description 3 gore flared skirt  
 Colours Black, Navy, Charcoal  
 Sizes 4 - 30

**Pant**

Code PA33-896  
 Description 3/4 Capri pant  
 Colours Black, Navy, Charcoal  
 Sizes 4 - 24





**Pant**

Code TRO-896 Bongardi Corporate  
Description Health care pant with flexi waist, phone pocket and 6cm hem  
Colours **Black, Navy, Charcoal**  
Sizes 72 reg - 102 reg, 87 short - 122 short



**Pant**

Code PA34-896  
Description Ladies short with flexi waist, pen and phone pocket  
Colours **Black, Navy, Charcoal**  
Sizes 4 - 24



**Pant**

Code PA31-896  
Description Flexi waist with pen and phone pockets  
Colours **Black, Navy, Charcoal**  
Sizes 4 - 30



When selecting an appropriate garment for corporate wear the right fit is the key.

Classic fits have a roomier construction able to fit a wide range of body types. Suit separates allow you to size up or down and the ranges available offer regular and short fittings and in some styles also long fittings are available.

Trousers with flat fronts, single pleats or flexi waist are included in the range.

“There is a garment and style to fit you and your body type”

**Jacket**

Code	SC2-4060
Description	40% wool 60% polyester mechanical stretch 2 button jacket with stretch lining
Colours	Black, Navy, <b>Charcoal</b>
Sizes	92 reg - 142 reg, 97 long - 127 long, 92 short - 142 short



# MEN'S





#### Pant

Code SU2-302 Andre Bini  
Description Polyester rayon  
2 button suit  
Colours **Black**  
Sizes 82 reg - 152 reg,  
97 long - 122 long,  
92 short - 132 short

#### Suit

Code SU2-070 MODOTTI  
Description 100% wool faille  
2 button suit  
with side vents  
Colours **Black, Navy, Charcoal**  
Sizes: 82 reg - 152 reg,  
97 long - 127 long,  
92 short - 142 short,  
97 stout - 142 stout



1



2



3



4

**1 Jacket**

**Code** SCR-851 Bongardi  
**Description** 100% wool faille 2 button sports jacket, gold buttons, inset pockets with flaps  
**Colour** Navy  
**Sizes** 87 reg - 142 reg, 97 long - 127 long, 97 short - 142 short

**2 Jacket**

**Code** SCR-001 Team  
**Description** 40% wool 60% polyester. 2 button, 3 pocket Reefer Jacket. Patch breast pocket for ease of embroidery.  
**Colours** Black, Navy  
**Sizes** 82 reg - 142 reg, 97 long - 127 long, 92 short - 142 short

**3 Jacket**

**Code** SC2-4060  
**Description** 40% wool 60% polyester mechanical stretch 2 button jacket with stretch lining  
**Colours** Black, Navy, Charcoal  
**Sizes** 92 reg - 142 reg, 97 long - 127 long, 92 short - 142 short

**Pant**

**Code** TRO-4060  
**Description** 40% wool 60% polyester mechanical stretch, flat front pant with flexi waist  
**Colours** Black, Navy, Charcoal  
**Sizes** 72 reg - 117 reg, 87 short - 132 short

**4 Vest**

**Code** VE-4060  
**Description** Men's adjustable back 5 button vest  
**Colours** Black, Navy, Charcoal  
**Sizes** 92 reg - 132 reg

**Pant**

**Code** TRO-4060  
**Description** 40% wool 60% polyester mechanical stretch, flat front pant with flexi waist  
**Colours** Black, Navy, Charcoal  
**Sizes** 72 reg - 117 reg, 87 short - 132 short



**Pant**

Code TRO-690 Paul Mason  
 Description 65% polyester 35% viscose washable plain front trouser with flexi waist  
 Colours Black, Navy, Charcoal, Taupe  
 Sizes 77 reg - 102 reg, 87 short - 122 short



**Pant**

Code TRO-896 Bongardi Corporate  
 Description Health care pant with flexi waist, phone pocket and 6cm hem  
 Colours Black, Navy, Charcoal  
 Sizes 72 reg - 102 reg, 87 short - 122 short



**Pant**

Code TRO-302 Andre Bini  
 Description Polyester rayon flat front pant. Easy care washable  
 Colours Black  
 Sizes 77 reg - 102 reg, 87 short - 122 short



**Pant**

Code TRO-4060  
 Description 40% wool 60% polyester mechanical stretch, flat front pant with flexi waist  
 Colours Black, Navy, Charcoal  
 Sizes 72 reg - 117 reg, 87 short - 132 short



**Pant**

Code TRO-070 MODOTTI  
 Description 100% wool. Flat front pure wool trouser  
 Colours Black, Navy, Charcoal  
 Sizes 77 reg - 102 reg, 87 short - 132 short



**Pant**

Code TRP-690 Paul Mason  
 Description 65% polyester 35% viscose. Easy care pant with single pleat front  
 Colours Black, Navy, Charcoal, Taupe  
 Sizes 77 reg - 102 reg, 87 short - 122 short



**Pant**

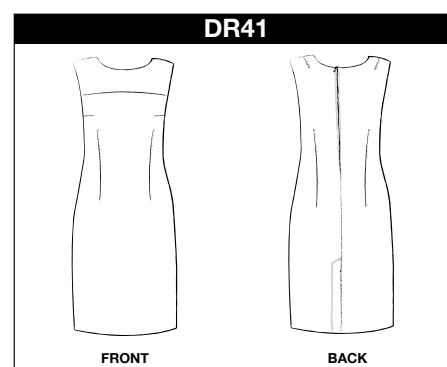
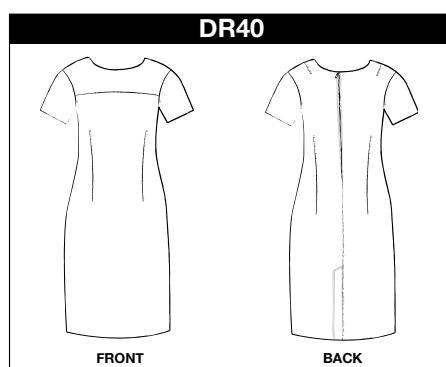
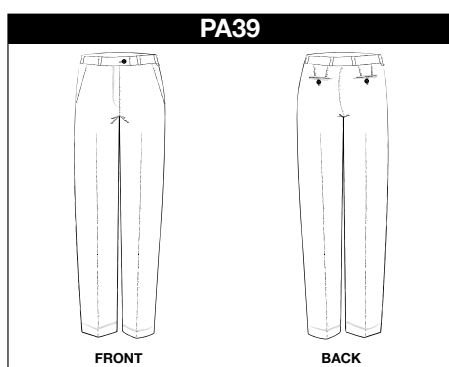
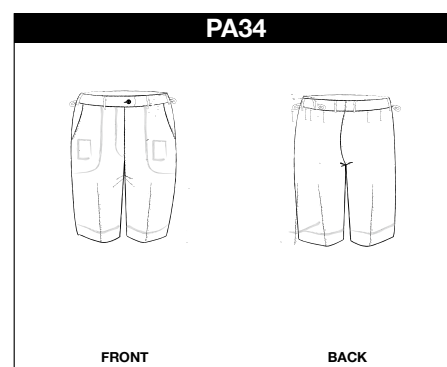
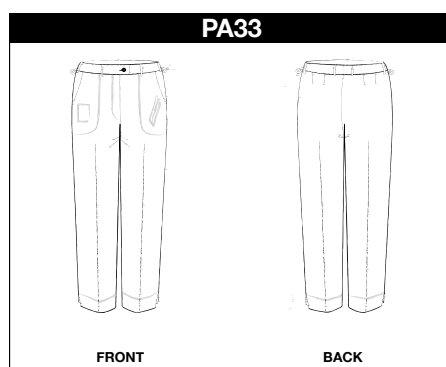
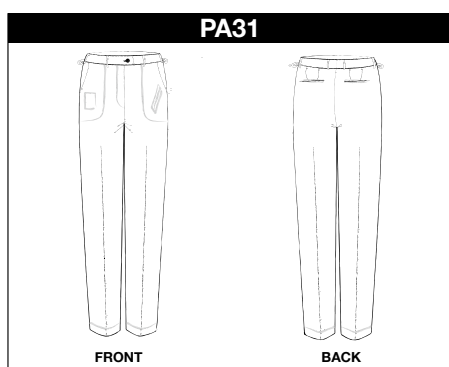
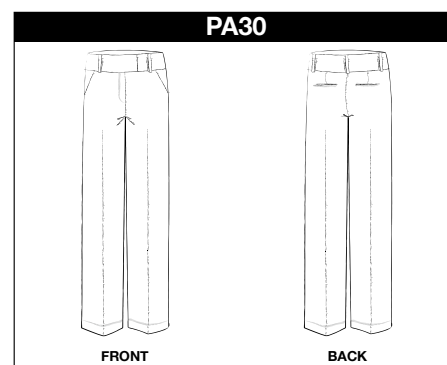
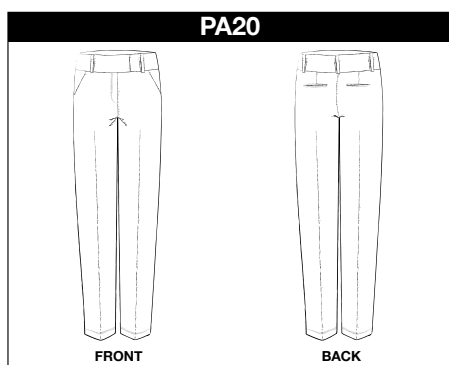
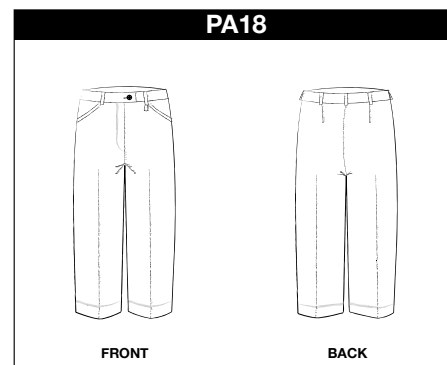
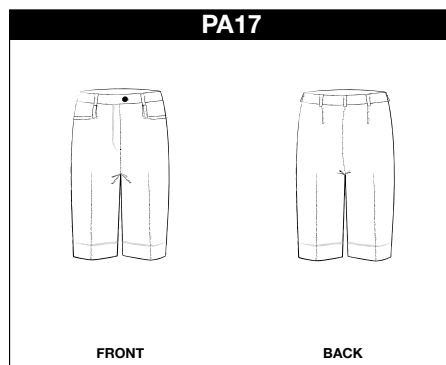
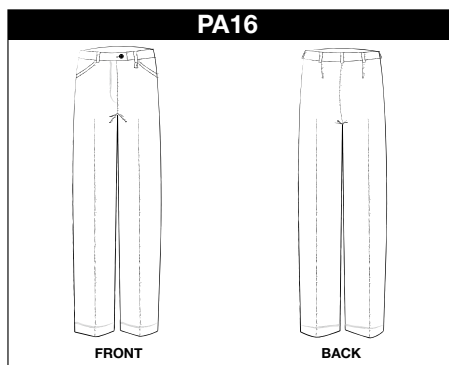
Code TRP-870 Paul Mason  
 Description 45% wool 55% polyester. Single pleat front pant  
 Colours Black, Navy, Charcoal, Taupe  
 Sizes 77 reg - 102 reg, 87 short - 122 short



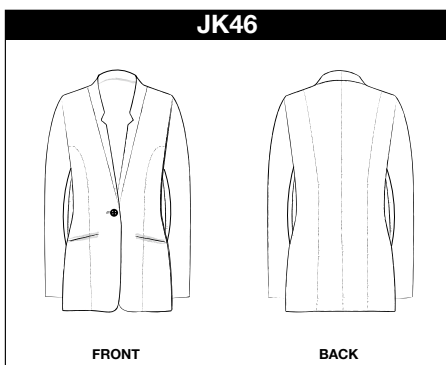
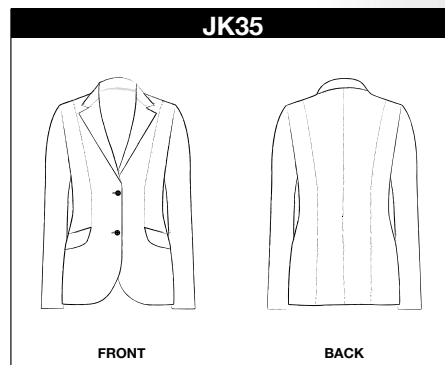
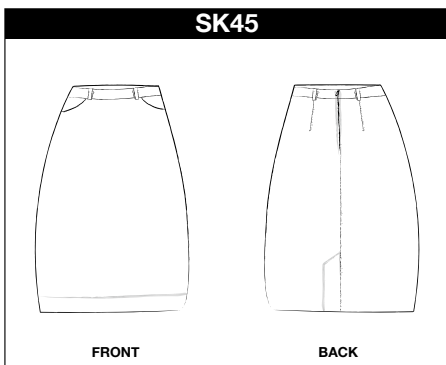
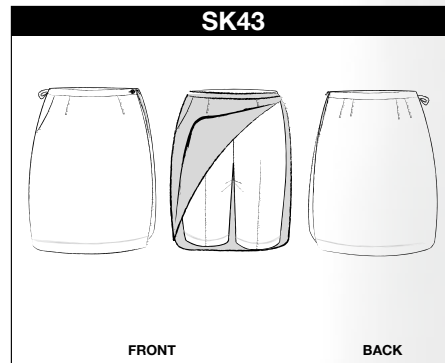
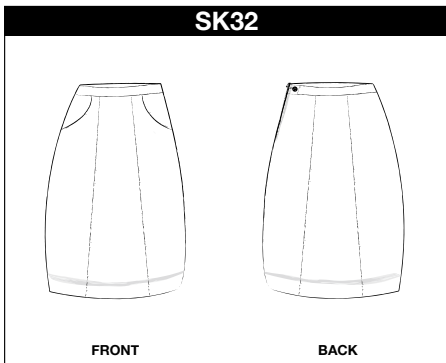
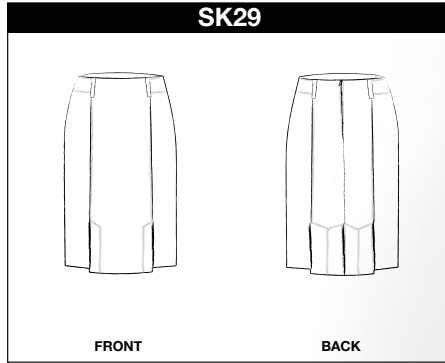
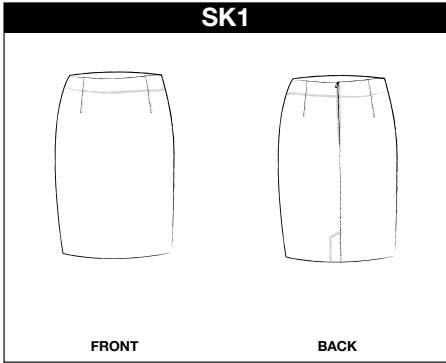
**Pant**

Code TRO-279 Bongardi  
 Description 100% cotton chino trouser  
 Colour Black, Navy, Taupe  
 Sizes 77 reg - 117 reg

# women's styles







# women

## SIZING INFORMATION

- Please use the size chart to find the best size for you.
- If your measurements fall between sizes, please order the next size up.
- For best results, take measurements over your undergarments.
- Garment waist measurement will vary depending on where it is worn on the hip.

- **BUST A**  
Lift your arms up your sides and measure around your body, crossing over the fullest part of your chest.
- **WAIST B**  
Measure around your waistline at the level where you normally wear your pants. Keep a finger between your body and the measuring tape for an accurate fit.
- **HIPS C**  
Stand with your heels together and measure around the fullest part of your hips. Measure approx 20mm from top of waist.

## Women's Size Guide

SLIM FIT													
SIZE	6	8	10	12	14	16	18	20	22	24	26	28	30
BUST (cm)	86	90	94	99	104	111	118	124	129	134	139	144	149
WAIST (cm) around top of waistband	69	74	79	84	89	94	99	104	109	114	119	124	
HIPS (cm) 20cm from top of waist	93	97	102	107	112	117	122	127	132	137	142	147	

Slim fit sizing styles: JK46 - PA16, PA17, PA18, PA20, PA22 - SK01

GENEROUS FIT													
SIZE	6	8	10	12	14	16	18	20	22	24	26	28	30
BUST (cm)	86	90	94	99	104	111	118	124	129	134	139	144	149
WAIST (cm) around top of waistband	71	74	79	84	89	95	102.5	110	115	120	125	130.5	135.5
HIPS (cm) 20cm from top of waist	98.8	101.5	106.5	111.5	116.5	125	132.5	140	145	150	155	160	165

Generous fit sizing styles: JK35 - PA30, PA31, PA33, PA34, PA39 - SK29, SK32, SK45



# size information

# men

## SIZING INFORMATION

- CHEST  
When measuring a man for a jacket place the tape around the chest as close to the under arms as possible, as shown in position **A**.
- WAIST  
When measuring a man for trousers place tape around waist on top of hip bones, as shown in position **B**. Hold tape firmly to achieve correct measurement.
- LENGTH  
Trousers length is given as an "inside leg" measurement **C**.  
Measure directly under crotch to 2cm above the shoe heel.

**Please note:** Suits are measured using chest and waist measurement. This is a standard 13cm difference. The difference between REGULAR and LONG or REGULAR and SHORT fittings are:

JACKET LENGTH + or - 2.5cm

SLEEVE LENGTH + or - 2.5cm

TROUSER LENGTH + or - 5cm



## Men's Size Guides

SUIT													
CENTIMETRES	82	87	92	97	102	107	112	117	122	127	132	137	142
INCHES	32	34	36	38	40	42	44	46	48	50	52	54	56

## Men's Trouser Size Guide

TROUSER													
CENTIMETRES	72	77	82	87	92	97	102	107	112	117	122	127	132
INCHES	28	30	32	34	36	38	40	42	44	46	48	50	52



is\_28065 www.isadv.com.au

[www.bongardi.com.au](http://www.bongardi.com.au)

**Bongardi Corporate**