



## SPRINKLE OF LOVE KNIT TABLE RUNNER



### MATERIALS

**Lily® Sugar'n Cream®** (2.5 oz/70.9 g; 120 yds/109 m)

<b>Main Color (MC)</b> Red (00095)	<b>5 balls or 582 yds/532 m</b>
<b>Contrast A</b> Ecru (00004)	<b>2 balls or 81 yds/74 m</b>
<b>Contrast B</b> Rose Pink (00046)	<b>2 balls or 30.5 yds/28 m</b>
<b>Contrast C</b> Hot Pink (01740)	<b>2 balls or 92.5 yds/84.5 m</b>

Size U.S. 7 (4.5 mm) knitting needles **or size needed to obtain gauge.** Pair of size U.S. 7 (4.5 mm) double-pointed knitting needles for I-cord edging. 6" [15 cm] piece of cardboard for tassels.



KNIT | SKILL LEVEL: **INTERMEDIATE**

### ABBREVIATIONS

**Approx** = Approximate(ly)  
**Beg** = Begin(ning)  
**Cont** = Continue  
**K** = Knit  
**K2tog** = Knit next 2 stitches together  
**K2togtbl** = Knit next 2 stitches together through back loops

**Psso** = Pass slipped stitch over  
**Rem** = Remain(ing)(s)  
**Sl1** = Slip next stitch  
**RS** = Right side  
**St(s)** = Stitch(es)  
**WS** = Wrong side

### MEASUREMENTS

Approx 12½ x 72" [32 x 183 cm].

### GAUGE

20 sts and 26 rows = 4" [10 cm] in stocking stitch.

### INSTRUCTIONS

**Note:** When working from charts, carry yarn not in use loosely across WS of work but never over more than 5 sts. When it must pass over more than 5 sts, weave it over and under color in use on next st or at center point of sts it passes over. The colors are never twisted around one another.

With MC, cast on 63 sts.

Proceed in stocking st, working rows 1 to 156 of Chart I on page 3, noting 1st row is RS and *reading RS rows from **right** to left and WS rows from **left** to right.*

With MC, cont in stocking Sst until work from beg measures 48" [122 cm], ending on a purl row.

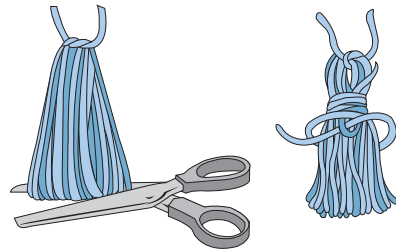
Work rows 1 to 156 of Chart II on page 4, noting 1st row is RS and *reading RS rows from **right** to left and WS rows from **left** to right.*  
 Cast off.



## SPRINKLE OF LOVE KNIT TABLE RUNNER

**Applied I Cord Edging:** With C and pair of double-pointed needles, cast on 3 sts onto right-hand needle. Beg at any corner of Table Runner with RS facing and left-hand needle, \*pick up 1 st from edge of Table Runner. Slide 4 sts over to opposite end of needle. Bring yarn around to back of work, K2. K2togtbl. Rep from \* around entire edge of Table Runner. When reaching the end, S11. K2tog. psso. Sew beg and end of applied I-cord together.

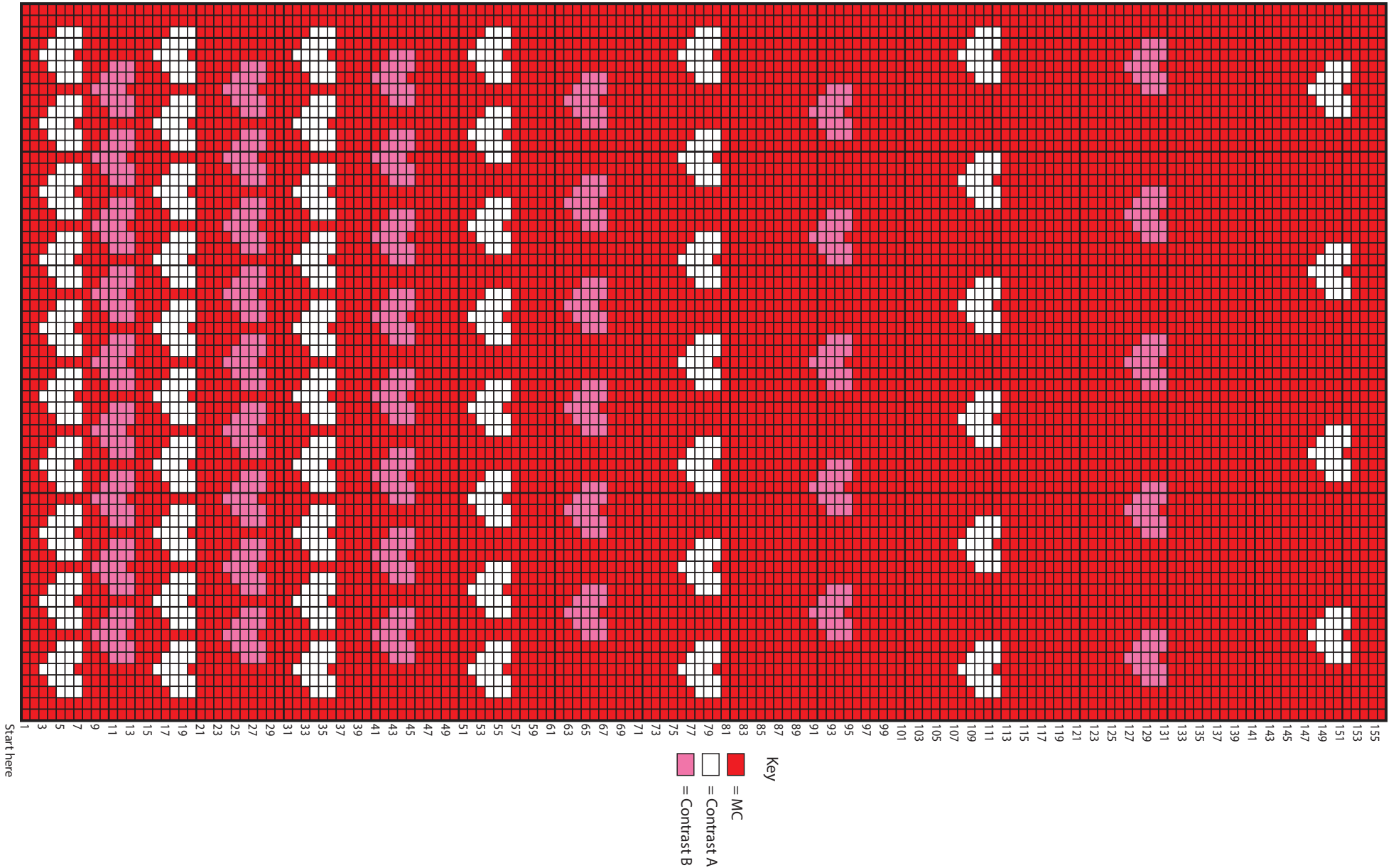
**Tassels (make 4 with A):** Cut a piece of cardboard 6" [15 cm] wide. Wind yarn around cardboard 50 times. Break yarn leaving a long end and thread end through needle. Slip needle through all loops and tie tightly. Remove cardboard and wind yarn tightly around loops 1" [2.5 cm] below fold. Fasten securely. Cut through rem loops and trim ends evenly. Sew 1 Tassel to each corner as shown in picture.





## SPRINKLE OF LOVE KNIT TABLE RUNNER

Chart 1





## SPRINKLE OF LOVE KNIT TABLE RUNNER

Chart II

