



### MATERIALS

**Lily® Sugar'n Cream®** (2.5 oz/70.9 g; 120 yds/109 m)

#### Cereal Bowl Dishcloth

**Contrast A** Country Green (01222) **1 ball or 42 yds/39 m**

**Contrast B** Robin's Egg (01215) **1 ball or 17 yds/15 m**

**Contrast C** White (00001) **1 ball or 4 yds/3 m**

#### Rise and Shine Dishcloth

Country Yellow (01612) **1 ball or 59 yds/54 m**

#### Sunny Side Up Dishcloth

**Contrast A** Robin's Egg (01215) **1 ball or 39 yds/35 m**

**Contrast B** White (00001) **1 ball or 18.5 yds/17 m**

**Contrast C** Country Yellow (01612) **1 ball or 4 yds/3 m**

Size U.S. 7 (4.5 mm) knitting needles **or size needed to obtain gauge.**



KNIT | SKILL LEVEL: **INTERMEDIATE**

### ABBREVIATIONS

**Approx** = Approximate(ly)

**Beg** = Begin(ing)

**Cont** = Continue

**RS** = Right side

**St(s)** = Stitch(es)

**WS** = Wrong side

### MEASUREMENT

Approx 9" [23 cm] square.

### GAUGE

20 sts and 26 rows = 4" [10 cm] in stocking st.

### INSTRUCTIONS

#### SUNNY SIDE UP DISHCLOTH

**Note:** When working from Chart, wind separate balls of each color to be used. When changing colors, wind 2 colors around each other where they meet, on WS, to avoid a hole.

With A, cast on 44 sts.

Work rows 1 to 50 of Chart, *reading RS rows from **right** to left and WS rows from **left** to right.* See chart on page 2.

With A, cast off knitwise (RS).

#### RISE AND SHINE DISHCLOTH

Cast on 44 sts.

Work rows 1 to 50 of chart, *reading RS rows from **right** to left and WS rows from **left** to right.* See chart on page 2.

Cast off knitwise (RS).

#### CEREAL BOWL DISHCLOTH

**Note:** When working from Chart, wind separate balls of each color to be used. When changing colors, wind 2 colors around each other where they meet, on WS, to avoid a hole.

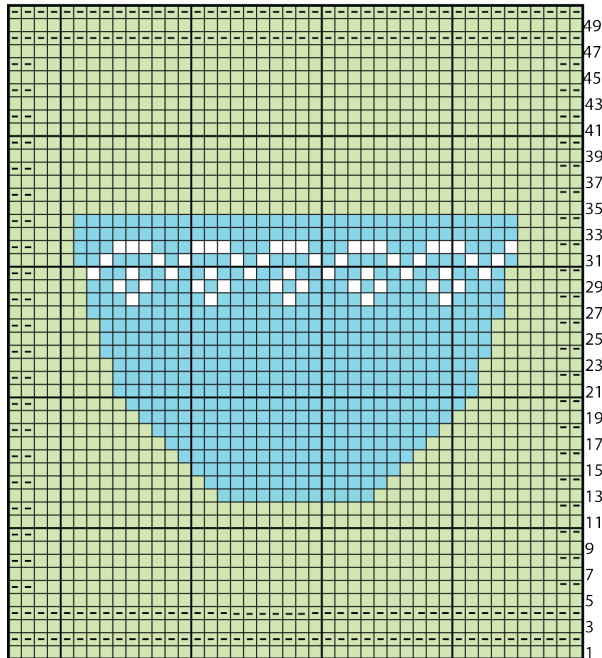
With A, cast on 44 sts.

Work rows 1 to 50 of Chart, *reading RS rows from **right** to left and WS rows from **left** to right.* See chart on page 2.

With A, cast off knitwise (RS).



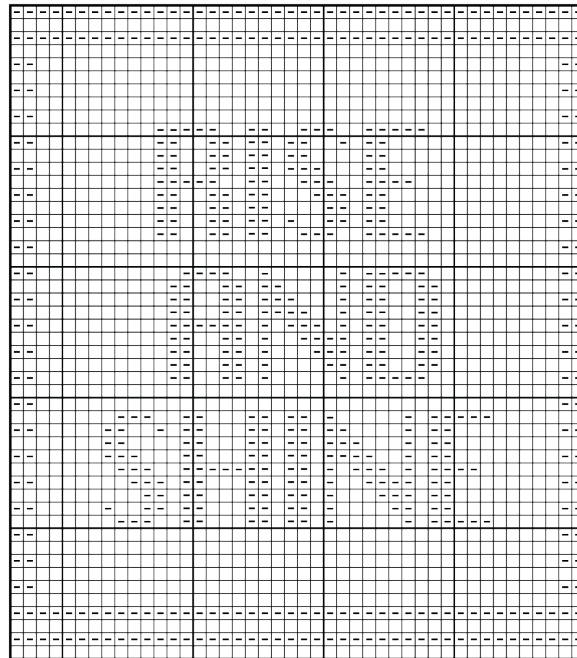
**Cereal Bowl Chart**



- Key
- = With A, knit on RS rows. Purl on WS rows.
  - = With A, purl on RS rows. Knit on WS rows.
  - = With B, knit on RS rows. Purl on WS rows.
  - = With C, knit on RS rows. Purl on WS rows.

Start Here

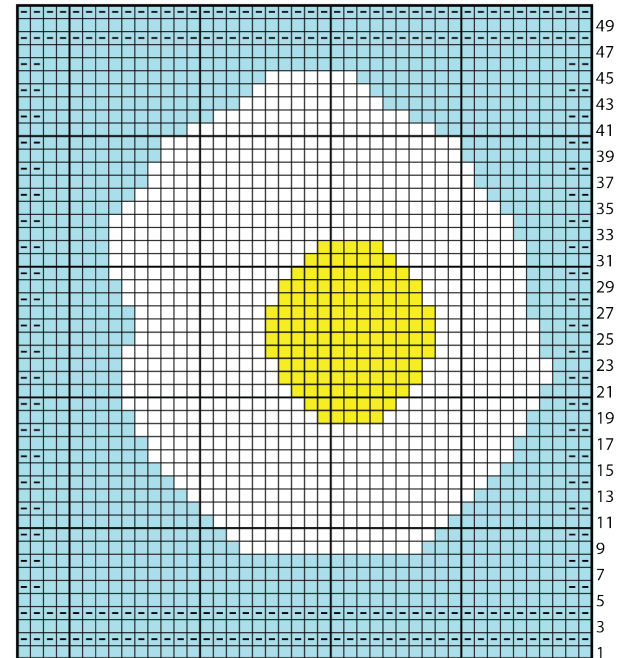
**Rise and Shine Chart**



- Key
- = Knit on RS rows. Purl on WS rows.
  - = Purl on RS rows. Knit on WS rows.

Start Here

**Sunny Side Up Chart**



- Key
- = With A, knit on RS rows. Purl on WS rows.
  - = With A, purl on RS rows. Knit on WS rows.
  - = With B, knit on RS rows. Purl on WS rows.
  - = With C, knit on RS rows. Purl on WS rows.

Start Here