



KNIT | SKILL LEVEL: EASY

## MEASUREMENT

Approx 9½" [24 cm] square.

## GAUGE

20 sts and 26 rows = 4" [10 cm] in stocking stitch.

## INSTRUCTIONS

Cast on 45 sts.

Knit 9 rows (garter st), noting first row is WS.

Work rows 1 to 48 of Chart (see page 2), noting first row is RS and reading RS rows from **right** to left and WS rows from **left** to right.

Knit 9 rows (garter st).

Cast off knitways (WS).



## MATERIALS

Lily® Sugar'n Cream® (2.5 oz/70.9 g; 120 yds/109 m)  
Dazzle Blue (01131)      **1 ball or 71 yds/65 m**

Size U.S. 7 (4.5 mm) knitting needles **or size needed to obtain gauge.**

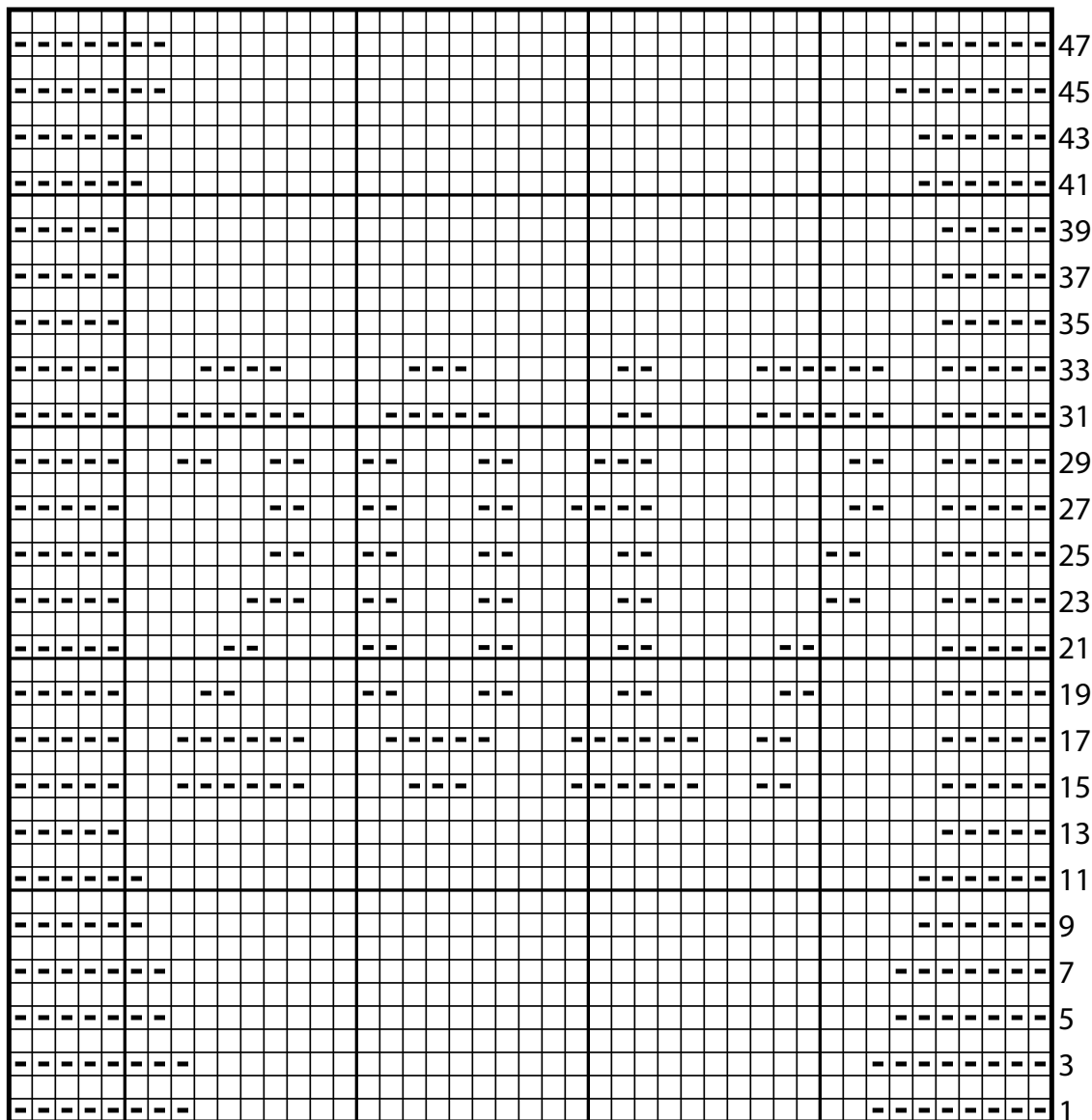
## ABBREVIATIONS:

**Approx** = Approximate(ly)

**RS** = Right side

**St(s)** = Stitch(es)

**WS** = Wrong side



Start Here

### Key

- = Knit on RS rows. Purl on WS rows.
- = Purl on RS rows. Knit on WS rows.