



**LILY® SUGAR'N CREAM  
APRON  
(TO KNIT)**

**MATERIALS**

**Lily® Sugar'n Cream**

(2.5 oz/70.9 g)

**Main Color (MC): (White) 4 balls**

**Contrast A: (Blue) 1 ball**

**Contrast B: (Green) 1 ball**

Size 4.5 mm (U.S. 7) knitting needles  
**or size needed to obtain gauge.**

**GAUGE**

20 sts and 26 rows = 4 in. [10 cm] in  
stocking st.

**INSTRUCTIONS**

**Note:** When working from chart, wind small balls of the colors to be used, one for each separate area of color in the design. Start new colors at appropriate points. To change colors, twist the two colors around each other where they meet, on WS, to avoid a hole.

With MC, cast on 123 sts.

**1st row:** (RS). K1. \*P1. K1. Rep

from \* to end of row.

This row forms seed st pat.

Work a further 5 rows in seed st pat, ending with RS facing for next row.

\*\*With A, work 2 rows in stocking st.

With MC, knit 1 row.

With MC, work 3 rows in seed st pat.

With B, work 2 rows in stocking st.

**Next row:** (RS). With MC, knit.\*\*

With MC, cont in seed st pat until work from beg measures 14 ins [35.5 cm], ending with RS facing for next row. Cast off in pat.

**Pockets** (make 2)

With MC, cast on 27 sts.

Work 4 rows in seed st pat.

Work from \*\* to \*\* as given for Apron.

With MC, work 2 rows in seed st pat.

**Next row:** (WS). Work 17 sts in seed st pat. Inc 1 st in next st. Work in seed st pat to end of row. 28 sts.

Proceed as follows:

**1st row:** With MC, work 3 sts in seed st pat. Work 1st row of Chart A across next 22 sts in stocking st reading row from **right** to left. With MC, work 3 sts in seed st pat.

**2nd row:** With MC, work 3 sts in seed st pat. Work 2nd row of Chart across next 22 sts in stocking st reading row from **left** to right. With MC, work 3 sts in seed st pat.

Chart A is now in position. Cont working Chart A to end of chart ending with RS facing for next row.

**Next row:** Work 17 sts in seed st pat. Work 2tog. Work in seed st pat to end of row. 27 sts.

With MC, work 3 rows in seed st pat. Cast off in pat.

**Waistband**

With MC, cast on 7 sts.

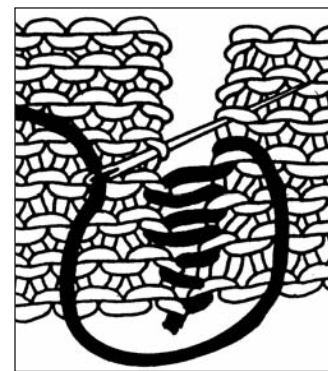
Proceed in seed st pat for 60 ins [152 cm]. Cast off in pat.

**FINISHING**

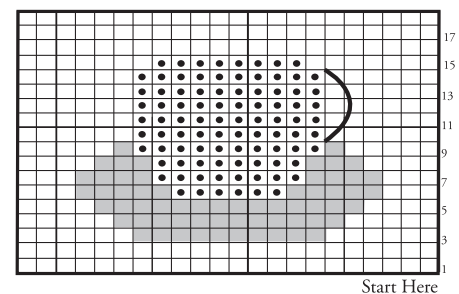
With B, embroider handle and around teacups using stem st, as illustrated.

Make 2 groups of pleats 4 ins [10 cm] from each side of Apron (3 pleats in each group, ½ ins [1.5 cm] deep). Center Apron to middle of Waistband and sew Apron using flat seam. Sew Pockets to Apron 4 ins [10 cm] from each side, 3 ins [7.5 cm] above lower edge.

**FLAT SEAM DIAGRAM**



**DIAGRAM**



**KEY**

- = MC
- = Contrast A
- = Contrast B
- = Stem st with B

**ABBREVIATIONS**

[www.sugarncream.com/glossary](http://www.sugarncream.com/glossary)

