



LATTICE LACE KNIT MARKET BAG



MATERIALS

Lily® Sugar'n cream™ (2.5 oz/70.9 g; 120 yds/109 m)
Yellow (00010) **3 balls**

Set of four size U.S. 8 (5 mm) double-pointed knitting needles.
Size U.S. 8 (5 mm) circular knitting needle 16" [40.5 cm] long **or size needed to obtain gauge.**



KNIT | SKILL LEVEL: INTERMEDIATE

ABBREVIATIONS

Alt = Alternate(ing)
Approx = Approximate(ly)
K = knit
K2tog = knit 2 stitches together
P = Purl
Pat = Pattern
PssO = Pass slipped stitch Over
P2sso = Pass two slipped stitches over.
RS = Right side
Rep = Repeat
Rem = Remain(ing)

Rnd(s) = Round(s)
Sl1 = Slip next stitch knitwise
Sl2 = Slip next 2 stitches together
Ssk = Slip next 2 stitches knitwise one at a time. Pass them back onto left-hand needle, then knit through back loops together.
St(s) = Stitch(es)
Tog = Together
WS = Wrong side
Yo = Yarn over

MEASUREMENT

Approx 21 1/2" [54.5 cm] in circumference x 11" [28 cm] tall, excluding handles.

GAUGE

18 sts and 24 rows = 4" [10 cm] in stocking st.

INSTRUCTIONS

Note: Bag is worked from bottom up. Change to circular needle when necessary.

With pair of double-pointed needles, cast on 5 sts.

1st rnd: *K1. yo. Rep from * around. Divide 10 sts (See Chart 1 on page 2) onto 3 needles (3, 3, 4). Place marker on first st for beg of rnd.

2nd and alt rnds: Knit.

3rd rnd: *yo. K1. Rep from * around. 20 sts.

5th rnd: *K2. yo. K1. yo. K2. Rep from * around. 28 sts.

7th rnd: *K3. yo. K1. yo. K3. Rep from * around. 36 sts.

9th rnd: *yo. K4. yo. K1. yo. K4. Rep from * around. 48 sts.

10th rnd: *P1. K11. Rep from * around.



LATTICE LACE KNIT MARKET BAG

11th rnd: *P1. yo. ssk. K3. yo. K1. yo. K3. K2tog yo. Rep from * around. 56 sts.

13th rnd: *K1. yo. Sl2. K1. p2sso. K3. yo. K1. yo. K3. K3tog. yo. Rep from * around.

15th rnd: *(K1. yo) twice. ssk. K7. K2tog yo. K1. yo. Rep from * around. 64 sts.

17th rnd: *K1. yo. K3. yo. ssk. K5. K2tog yo. K3. yo. Rep from * around. 72 sts.

19th rnd: *K1. yo. K5. yo. ssk. K3. K2tog yo. K5. yo. Rep from * around. 80 sts.

21st rnd: *K1. (yo. K1. yo. ssk. K1. k2tog) 3 times. yo. K1. yo. Rep from * around. 88 sts.

23rd rnd: * K1. (yo. K3. yo. Sl1. K2tog pssso) 3 times. yo. K3. yo. Rep from * around. 96 sts. Place marker at end of rnd.

7th rnd: K2. Place marker for beg of rnd. *yo. K3. yo. Sl1. K2tog pssso. Rep from * around.

9th rnd: *ssk. K1. K2tog yo. K1. yo. Rep from * around.

11th rnd: *Sl1. K2tog pssso. yo. K3. yo. Rep from * around.

12th rnd: Knit.
Rep 1st to 12th rnds for pat until work from marked rnd measures 11" [28 cm], ending with a knit rnd.

Next rnd: Purl.

Next rnd: Knit.

Rep last 2 rnds twice more. Cast off purlwise.

Handles: (make 2).

Cast on 75 sts. Knit 4 rows. Cast off knitwise (WS).

Sew sides of each Handle to top of Bag (see photo).

Proceed in pat for body of Bag:
See Chart 2.

1st rnd: *K1. yo. ssk. K1. K2tog yo. Rep from * around.

2nd and alt rnds: Knit.

3rd rnd: * K2. yo. Sl1. K2tog pssso. yo. K1. Rep from * around.

5th rnd: *K1. K2tog yo. K1. yo. ssk. Rep from * around.

Chart 2

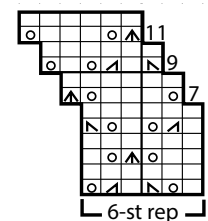
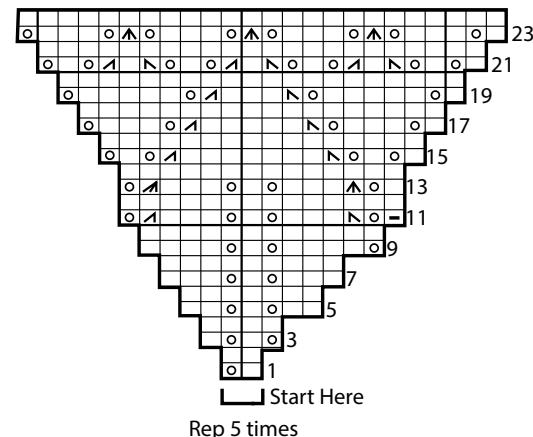


Chart 1



KEY

- - Knit on RS rows. Purl on WS rows.
- ◻ - Purl on RS rows. Knit on WS rows.
- - yo
- ◻ - ssk
- ◻ - K2tog
- ◻ - Sl1, K2tog, pssso, or Sl2, K1, p2sso.
- ◻ - K3tog.