



MATERIALS

Lily® Sugar'n Cream® (2.5 oz/71 g; 120 yds/109 m)

Main Color (MC) Seabreeze (01201) **1 ball or 48 yds/44 m**

Contrast A Tangerine (01699) **1 ball or 15 yds/14 m**

Contrast B Ecu (00004) **1 ball or 11 yds/10 m**

Note: 1 ball of each MC, A, and B will make 2 Trivets.

Size U.S. H/8 (5 mm) Susan Bates® Silvalume® crochet hook **or size needed to obtain gauge.** Susan Bates® yarn needle.



CROCHET | SKILL LEVEL: **EASY**

ABBREVIATIONS

Approx = Approximately **Ch** = Chain(s) **Sc** = Single crochet
Beg = Beginning **Rem** = Remaining
Rep = Repeat

MEASUREMENTS

Approx 6 ½" x 9 ¾" [16.5 x 25 cm].

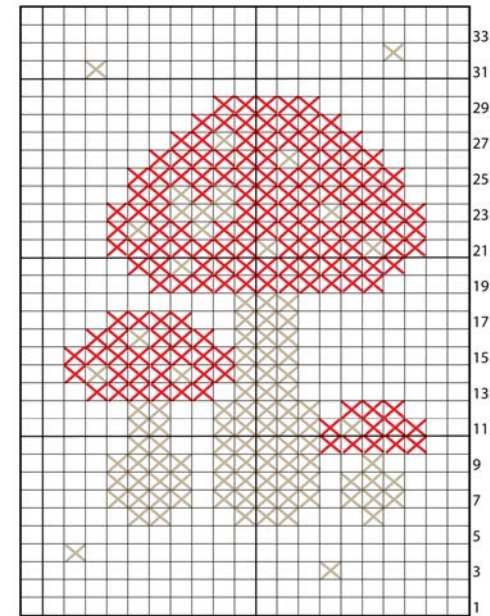
GAUGE

13 sc and 14 rows = 4" [10 cm].

INSTRUCTIONS

With MC, ch 22.
1st row: 1 sc in 2nd ch from hook. 1 sc in each ch to end of ch. Turn. 21 sc.
2nd row: Ch 1. 1 sc in each sc to end of row. Turn.
 Rep 2nd row until 34 rows total worked.
 Fasten off.

With A and B, cross stitch Mushroom motif following Chart. Each square of chart equals 1 single crochet.



☒ = Contrast A
 ☒ = Contrast B