



CROCHET | SKILL LEVEL: EASY

ABBREVIATIONS

Approx =

Approximately

Beg = Begin(ning)

Ch = Chain(s)

Pat = Pattern'

Rem = Remaining

Rep = Repeat

RS = Right side

Scbl = Single crochet
in back loop

Sc = Single crochet

Sl st = Slip stitch

Sp(s) = Space(s)

St(s) = Stitch(es)

WS = Wrong side

Yoh = Yarn over hook

MEASUREMENT

Approx 9½" [24 cm] square.

GAUGE

14 sc and 15 rows = 4" [10 cm].

INSTRUCTIONS

Version 1: Color 1 = A; Color 2 = C.

Version 2: Color 1 = C; Color 2 = B.

Version 3: Color 1 = B; Color 2 = C.

DISHCLOTH

Note: Dishcloth is worked corner to corner, increasing at center corner of each row.

To change color, work to last 2 loops on hook of first color, yoh with new color and proceed.

Carry Color 1 when not in use loosely up side of work. Join and break Color 2 throughout.

With Color 1, ch 2.

See diagram on page 2.

1st row: (1 sc. Ch 1. 1 sc) in 2nd ch from hook. Turn.

2nd row: Ch 1. 1 sc in first sc. (1 sc. Ch 1. 1 sc) in next ch-1 sp. 1 sc in last sc. Turn.

3rd row: Ch 1. 1 sc in each sc to next ch-1 sp. (1 sc. Ch 1. 1 sc) in next corner ch-1 sp. 1 sc in each sc to end of row. Turn.

4th row: As 3rd row. Join Color 2.

5th row: With Color 2, ch 1. 1 scbl in each sc to next ch-1 sp. (1 sc. Ch 1. 1 sc) in next corner ch-1 sp. 1 scbl in each sc to end of row. Turn.

6th row: With Color 2, as 3rd row. Join Color 1.

MATERIALS

Lily® Sugar'n Cream™ Super Size (4 oz/113 g; 190 yds/174 m)

3 Dishcloth Set

Contrast A Bamboo (18807) **1 ball or 65 yds/59 m**

Contrast B Overcast (18042) **1 ball or 190 yds/174 m**

Contrast C Ecu (18004) **2 balls or 230 yds/210 m**

Size U.S. 7 (4.5 mm) crochet hook **or size needed to obtain gauge.**
Yarn needle. Stitch marker.

7th row: With Color 1, ch 1. 1 scbl in each sc to next ch-1 sp. (1 sc. Ch 1. 1 sc) in next corner ch-1 sp. 1 scbl in each sc to end of row. Turn.

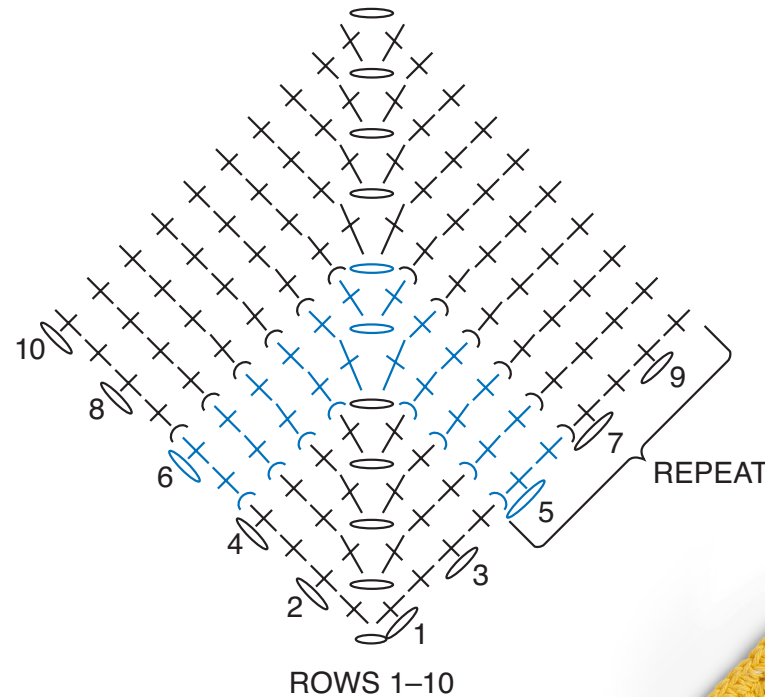
8th to 10th rows: With Color 1, as 3rd row. Join Color 2 at end of 10th row.

Rep 5th to 10th rows for Stripe Pat 4 times more, then rep 5th and 6th rows once. Fasten off.

Edging: (RS). Join Color 1 with sl st in lower corner of last row worked and work 1 row of sc evenly up side of Cloth, 3 sc in top corner and sc evenly down opposite side of Cloth, ending at final row. Fasten off. **Do not** work across final row.

Hanging Loop: 1st rnd: (WS). Join Color 1 with sl st to corner at center of foundation chain. Ch 9. Sl st in same sp as last sl st to form ring. **Turn.**

2nd rnd: Ch 1. Work 16 sc in ring. Join with sl st to first sc. Fasten off.



STITCH KEY

- = chain (ch)
- ⊥ = single crochet (sc)
- ⤴ = worked in back loop (bl)

