



SONOMA



JADE MIST

MATERIALS

Lily® Sugar'n Cream® Super Size™ (Solids: 4 oz/113 g; 190 yds/174 m; Ombres & Prints: 3 oz/85 g; 143 yds/131 m)

Sonoma (18004)

1 ball or 70 yds/65 m

OR

Jade Mist (18813)

1 ball or 70 yds/65 m

Note: 1 ball will make 2 Dishcloths.

Size U.S. H/8 (5 mm) crochet hook **or size needed to obtain gauge.**
Yarn needle.



CROCHET | SKILL LEVEL: **EASY**

ABBREVIATIONS

Approx = Approximately

Ch = Chain(s)

Pat = Pattern

Prev = Previous

Rep = Repeat

RS = Right side

Sc = Single crochet

Sl st = Slip stitch

St(s) = Stitch(es)

Tog = Together

Trfp = (Yoh) twice and draw up a loop around post of next stitch at front of work, inserting hook from right to left. (Yoh and draw through 2 loops on hook) 3 times

Yoh = Yarn over hook

MEASUREMENTS

Approx 8" x 8½" [20.5 x 21.5 cm].

GAUGE

13 sc and 14 rows = 4" [10 cm].

INSTRUCTIONS

Ch 27 (multiple of 6 ch + 3).

See diagram on page 2.

1st row: (RS). 1 sc in 2nd ch from hook. 1 sc in each ch to end of chain. Turn. 26 sts.

2nd to 4th rows: Ch 1. 1 sc in each st to end of row. Turn.

5th row: Ch 1. 1 sc in first st. 1 trfp around 4th sc 3 rows below. Skip next st (behind trfp). 1 sc in each of next 4 sts. 1 trfp around next sc 3 rows below (next to the last trfp worked). *Skip next 4 sc 3 rows below. 1 trfp around next sc 3 rows below. Skip next 2 sts (behind 2 trfp). 1 sc in each of next 4 sts. 1 trfp around next sc 3 rows below (next to the last trfp worked). Rep from * to last 2 sts. Skip next st (behind last trfp). 1 sc in last st. Turn.

6th to 8th rows: Ch 1. 1 sc in each st to end of row. Turn.

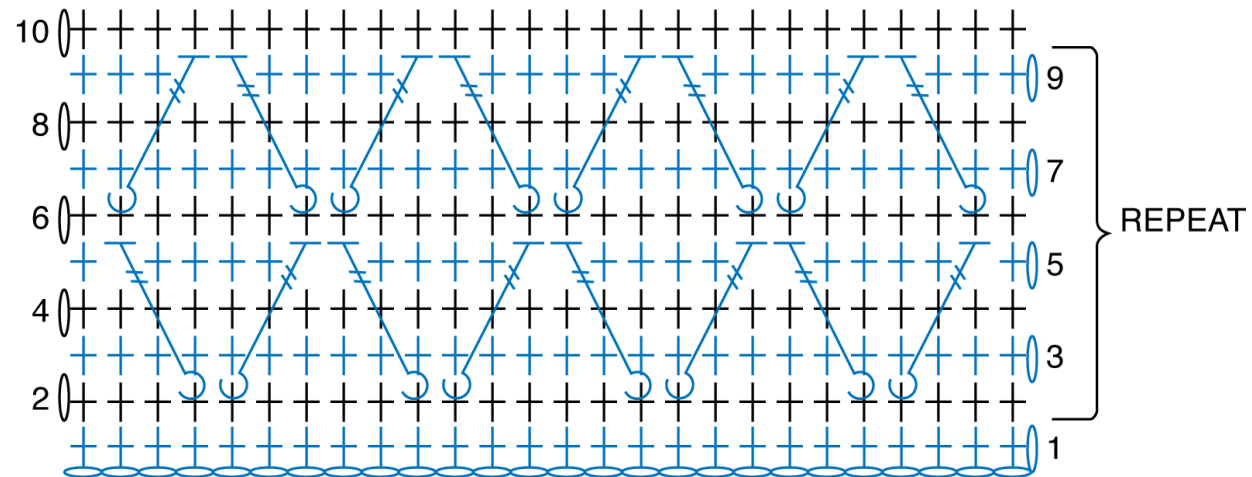


9th row: Ch 1. 1 sc in each of first 3 sts. 1 trfp around 2nd sc 3 rows below (directly above Trfp of prev Trfp row). Skip next 4 sc 3 rows below. 1 trfp around next sc 3 rows below. Skip next 2 sts (behind 2 trfp). *1 sc in each of next 4 sts. 1 trfp around next sc 3 rows below (next to last Trfp worked). Skip next 4 sc 3 rows below. 1 trfp around next sc 3 rows below. Skip next 2 sts (behind 2 trfp). Rep from * to last 3 sts. 1 sc in each of last 3 sts. Turn.

Rep 2nd to 9th rows twice more, then 2nd and 3rd rows once more.

Do not turn on last row.

Edging: With RS facing, ch 1. Work sc evenly around edges of Dishcloth, working 3 sc in each corner. Join with sl st to first sc. Fasten off.



STITCH KEY

○ = chain (ch)

† = single crochet (sc)

⌋ = front post treble
crochet (trfp)