



MATERIALS

Lily® Sugar'n Cream® Scrub Off™ (2.6 oz/75 g; 106 yds/97 m) Cream (90018) **or** Energetic Pink (90013) **or** Pretty Purple (90017) **1 ball**
 Size U.S. H/8 (5 mm) crochet hook **or size needed to obtain gauge.**

ABBREVIATIONS

Approx = Approximately
Ch = Chain(s)

Cont = Continue(ity)
Sc = Single crochet

CROCHET | SKILL LEVEL: **EASY**

MEASUREMENT

Approx 8" [20.5 cm] square

GAUGE

13 sc and 14 rows = 4" [10 cm].

INSTRUCTIONS

Ch 2.

1st row: 3 sc in 2nd ch from hook. Turn.

2nd row: Ch 1. *Working in back loops only*, 1 sc in first sc. 3 sc in next sc. 1 sc in last sc. Turn. 5 sc.

3rd row: Ch 1. *Working in back loops only*, 1 sc in each of first 2 sc. 3 sc in next sc. 1 sc in each of last 2 sc. Turn. 7 sc.

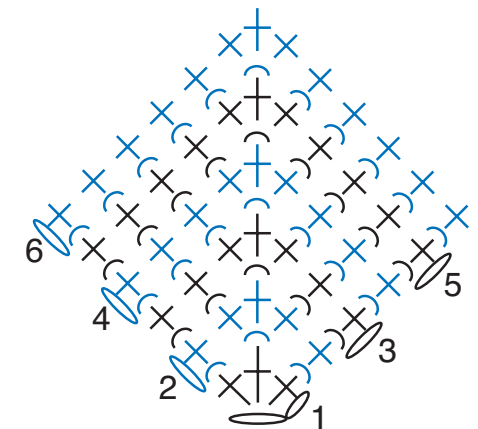
4th row: Ch 1. *Working in back loops only*, 1 sc in each of first 3 sc. 3 sc in next sc. 1 sc in each of last 3 sc. Turn. 9 sc.

5th row: Ch 1. *Working in back loops only*, 1 sc in each of first 4 sc. 3 sc in next sc. 1 sc in each of last sc. Turn. 11 sc.

Cont in same manner, working 3 sc in center sc, as established, each row, until 25 rows in total have been worked. 51 sc.

Next row: Ch 1. *Working in back loops only*, 1 sc in each of first 25 sc. (1 sc. Ch 10 for hanging loop. 1 sc) all in next sc. 1 sc in each of last 25 sc. Fasten off.

Continue in pattern through 25th row



STITCH KEY

- = chain (ch)
- = single crochet (sc)
- = worked in back loop only