



**LILY® SUGAR'N CREAM®  
COW DISHCLOTH (TO CROCHET)**

**MEASUREMENT**

Approx 9½" [24 cm] square.

**MATERIALS**

Lily® Sugar'n Cream® (70.9 g/2.5 oz; 109 m/120 yds)

**Contrast A** White (00001) (18.5 m/21 yds) or 1 ball

**Contrast B** Black (00002) (18.5 m/21 yds) or 1 ball

**Contrast C** Rose Pink (00046) (7.5 m/8 yds) or 1 ball

Size 5 mm (U.S. H or 8) crochet hook or size needed to obtain gauge.

**GAUGE**

13 sc and 14 rows = 4" [10 cm]

**ABBREVIATIONS**

[www.sugarncream.com/abbreviations](http://www.sugarncream.com/abbreviations)

**Approx** = Approximate(ly)

**Ch** = Chain(s)

**Cont** = Continue

**Dc** = Double crochet

**Rep** = Repeat

**Rnd** = Round(s)

**RS** = Right side

**Sc** = Single crochet

**Sl st** = Slip stitch

**St(s)** = Stitch(es)

**INSTRUCTIONS**

**Notes:**

- When joining new color, work to last 2 loops on hook of last st. Draw new color through 2 loops, then proceed in new color.
- Carry color not in use loosely across top of previous row and work sts around it to prevent stranding.

With A, ch 36.

**1st row:** (RS). With B, 1 sc in 2nd ch from hook. 1 sc in each of next 10 ch. With A, 1 sc in each of next 12 ch. With B, 1 sc in each of next 7 ch. With A, 1 sc in each of last 5 ch. 35 sc. Turn.

First row of Chart is now complete.

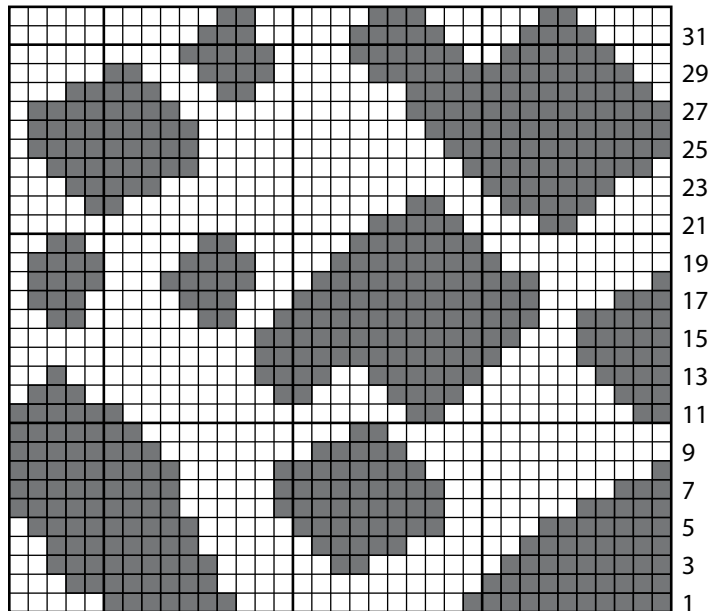
Cont working Chart until row 32 of Chart is complete.

**Border**

**1st rnd:** (RS). Join C with sl st to first sc. Ch 1. 2 sc in same sc as sl st. Work 1 rnd of sc evenly around Dishcloth, working 33 sc along each side edge and having 3 sc in each corner. Join with sl st to first sc. 144 sc.

**2nd rnd:** Ch 1. \*(1 sc. Ch 5. 1 sc. Ch 7. 1 sc. Ch 5. 1 sc) all in next sc. Ch 4. Miss next 5 sc. Rep from \* around. Join with sl st to first sc. Fasten off.

**CHART**



Start Here



P.O. Box 40 Listowel ON N4W 3H3