



Mushroom

Checkered Square

Smiley Face

Granny Square

ABBREVIATIONS

Approx =

Approximately

Beg = Beginning

Ch = Chain(s)

Dc = Double crochet

Hdc = Half double
crochet

Rep = Repeat

Rnd(s) = Round(s)

RS = Right side

Sc = Single crochet

Sc2(3)tog = Draw up
a loop in each of next

2 (3) stitches. Yoh
and draw through all
loops on hook

Sl st = Slip stitch

Sp(s) = Space(s)

St(s) = Stitch(es)

Yoh = Yarn over hook



CROCHET | SKILL LEVEL: EASY

MATERIALS

Lily® Sugar'n Cream The Original™ (2.5 oz/70.9 g; 120 yds/109 m)

Smiley Face

Contrast A Yellow (00010)

1 ball or 18 yds/16 m

Contrast B Black (00002)

1 ball or 6 yds/5 m

Granny Square

Contrast A Hot Green (01712)

1 ball or 5 yds/4 m

Contrast B Soft Ecru (01004)

1 ball or 9 yds/8 m

Contrast C Robin's Egg (01215)

1 ball or 14 yds/13 m

Contrast D Hot Pink (01740)

1 ball or 19 yds/17 m

Contrast E Yellow (00010)

1 ball or 6 yds/5 m

Checkered Square

Contrast A Robin's Egg (01215)

1 ball or 16 yds/14 m

Contrast B Hot Green (01712)

1 ball or 20 yds/18 m

Mushroom

Contrast A Hot Pink (01740)

1 ball or 14 yds/13 m

Contrast B Hot Green (01712)

1 ball or 12 yds/11 m

Size U.S. F/5 [3.75 mm] Susan Bates® Silvalume® crochet hook **or size needed to obtain gauge.** Susan Bates® yarn needle.



MEASUREMENTS

Smiley Face: Approx 4" [10 cm] diameter.

Granny Square: Approx 4½" [11.5 cm] square.

Checkered Square: Approx 5" [12.5 cm] square.

Mushroom: Approx 4½" [11.5 cm] tall x 4" [10 cm] wide.

GAUGE

16 sc and 17 rows = 4" [10 cm].

INSTRUCTIONS

Note: Join rnds with sl st to first st.

SMILEY FACE

(See diagram on page 4).

Note: Ch 2 at beg of rnd **does not** count as st.

With A, ch 4. Join with sl st to first ch to form ring.

1st rnd: Ch 2. 12 hdc in ring. Join.

2nd rnd: Ch 2. 2 hdc in each hdc around. Join. 24 hdc.

3rd rnd: Ch 2. *2 hdc in next st. 1 hdc in next st. Rep from * around. Join. 36 hdc.

4th rnd: Ch 2. *1 hdc in next st. 2 hdc in next st. 1 hdc in next st. Rep from * around. 48 hdc. Break A. Join B.

5th rnd: With B, ch 1. 1 sc in each hdc around. Join. Fasten off.

Eyes (make 2)

With B, ch 4.

1st row: Sl st in 2nd ch from hook. 1 sc in next ch. Sl st in next ch. Fasten off.

Surface Slip Stitch Smile

With RS facing, join B with sl st to any stitch in the 4th rnd of Smiley Face. Working along top of 4th rnd, work surface slip stitch as follows: *Insert hook into next st and draw up a loop through loop on hook. Rep from * until you have worked across the tops of 24 stitches in 4th rnd. Fasten off.

Sew Eyes to Smiley Face as shown in photo.

GRANNY SQUARE

(See diagram on page 4).

With A, ch 4. Join with sl st to first ch to form ring.

1st rnd: (RS). Ch 6 (counts as 1 dc. Ch 3). (3 dc in ring. Ch 3) 3 times. 2 dc in ring. Join. Fasten off. 12 dc and 4 ch-3 sps.

2nd rnd: Join B in any ch-3 sp. Ch 6. 3 dc in same ch-3 sp. *Ch 1. (3 dc. Ch 3. 3 dc) in next ch-3 sp. Rep from * twice. Ch 1. 2 dc in first ch-3 sp. Join. Fasten off.

3rd rnd: Join C in any ch-3 sp. Ch 6. 3 dc in same ch-3 sp. *Ch 1. 3 dc in next ch-1 sp. Ch 1. (3 dc. Ch 3. 3 dc) in next ch-3 sp. Rep from * twice more. Ch 1. 3 dc in last ch-1 sp. Ch 1. 2 dc in first ch-3 sp. Join. Fasten off.

4th rnd: Join D in any ch-3 sp. Ch 6. 3 dc in same ch-2 sp. *(Ch 1. 3 dc) in each ch-1 sp across to next ch-3 sp. Ch 1. (3 dc. Ch 3. 3 dc) in next ch-3 sp. Rep from * twice. (Ch 1. 3 dc) in each ch-1 sp across to first ch-3 sp. Ch 1. 2 dc in first ch-3 sp. Join. Fasten off.

5th rnd: Join E to any ch-3 sp. Ch 1. 4 sc in same ch-3 sp. Work 1 sc in each sc and ch-1 sp, and 4 sc in each ch-3 sp. Join. Fasten off.

CHECKERED SQUARE

Note: To change color, work to last 2 loops on hook and draw new color through last 2 loops, then proceed in new color.

With A, ch 22.

1st row: (RS). With A, 1 hdc in 3rd ch from hook. 1 hdc in each of next 3 ch. (With B, 1 hdc in each of next 4 ch. With A, 1 hdc in each of next 4 ch) twice. Turn. 20 hdc.

2nd row: With A, ch 2. 1 hdc in each of first 4 hdc. *With B, 1 hdc in each of next 4 hdc. With A, 1 hdc in each of next 4 hdc. Rep from * to end of row. Turn.

3rd and 4th rows: With B, ch 2. 1 hdc in each of first 4 hdc. *With A, 1 hdc in each of next 4 hdc. With B, 1 hdc in each of next 4 hdc. Rep from * to end of row. Turn.

5th and 6th rows: As 2nd row.

Rep 3rd to 6th rows until work from beg measures approx 5" [12.5 cm], ending after a 4th or 6th row. Fasten off.

With RS facing, join A with sl st to any corner. Work 3 sc in same sp as sl st. Work in sc evenly around, working 3 sc in each corner. Join. Fasten off.

MUSHROOM

(See diagrams on page 4).

Mushroom Cap

With A, ch 16.

1st row: 1 sc in 2nd ch from hook. 1 sc in each ch to end of chain. Turn. 15 sc.

2nd row: Ch 1. 1 sc in first sc. Sc2tog. 1 sc in each st to last 3 sts. Sc2tog. 1 sc in last sc. 13 sts.

3rd row: Ch 1. 1 sc in each st to end of row. Turn.

4th to 7th rows: As 2nd row. 5 sc.

8th row: Ch 1. 1 sc in first sc. Sc3tog. 1 sc in last sc. Turn. 3 sts.

9th row: Ch 1. Sc3tog. Fasten off. Join B.

1st rnd: With B, ch 1. Work evenly in sc around entire Cap, working 3 sc in each corner sp. Join. Fasten off.

Mushroom Stem

With B, ch 6.

1st row: 1 sc in 2nd chain from hook. 1 sc in each ch to end of chain. Turn. 5 sc.

2nd row: Ch 1. 1 sc in each sc to end of row. Turn.

3rd row: Ch 1. 1 sc in first sc. (2 sc in next sc. 1 sc in next sc) twice. 7 sc.

4th row: As 2nd row.

5th row: Ch 1. 1 sc in first sc. (Sc2tog. 1 sc in next sc) twice. 5 sts.

6th row: Ch 1. 1 sc in first st. Sc3tog. 1 sc in last st. Turn. 3 sts.

7th row: As 2nd row.

8th row: Ch 1. Sc3tog. Fasten off. Join A.

1st rnd: With A, ch 1. Work in sc evenly around entire Stem, working 3 sc in each corner. Join. Fasten off.

Mushroom Spots

Small Spot (make 2)

With B, beg using magic loop method demonstrated [here](#).

1st rnd: Ch 1. 6 sl st in ring. Join. Fasten off.

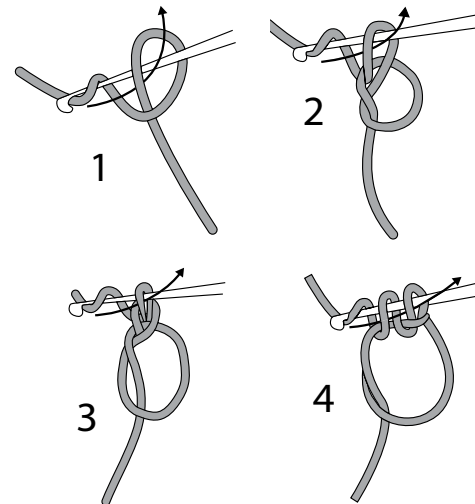
Large Spot (make 1)

With B, make magic loop.

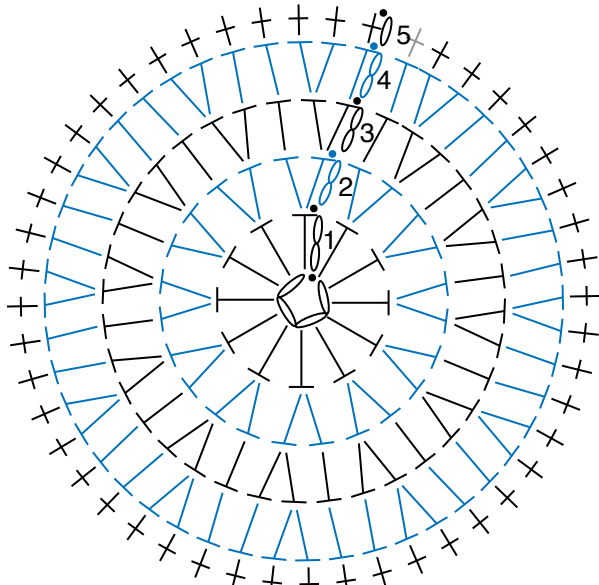
1st rnd: Ch 1. 8 sl st in ring. Join.

2nd rnd: Ch 1. Sl st in each sl st around. Join. Fasten off.

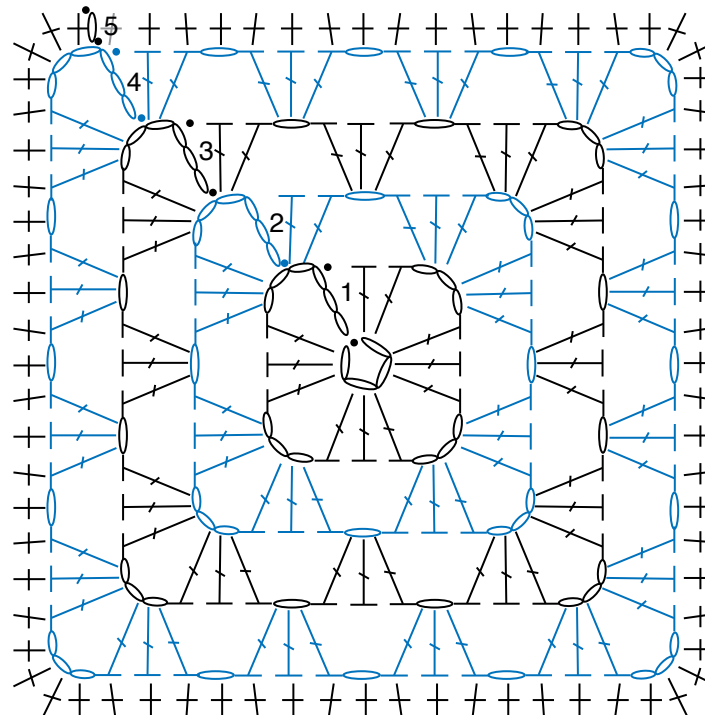
Sew Spots to Mushroom Cap as shown in photo. Align Mushroom Cap and Stem and sew in place as shown in photo.



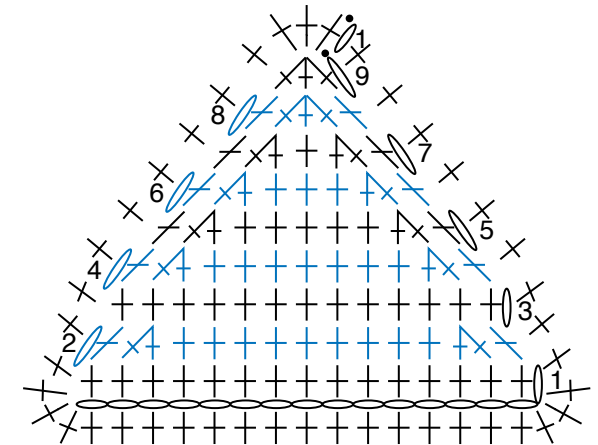
MAGIC LOOP



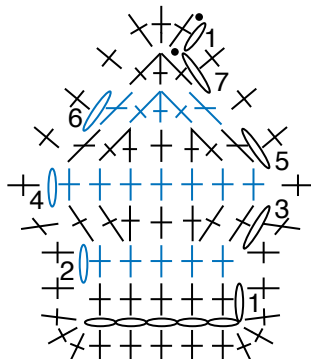
SMILEY FACE



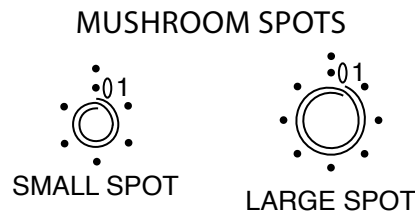
GRANNY SQUARE



MUSHROOM CAP



MUSHROOM STEM



SMALL SPOT

LARGE SPOT

STITCH KEY

- = chain (ch)
- = slip stitch (sl st)
- † = single crochet (sc)
- ┆ = half double crochet (hdc)
- ┆ = double crochet (dc)
- △ = single crochet 2 together (sc2tog)
- △ = single crochet 3 together (sc3tog)
- ◎ = magic loop