

SHOP KIT



Lacy Eh! Line Tunic

Sizes: S M L XL 2XL

Knitted Measurements:

Bust:

inch	36"	40"	44"	48"	52"
cm	91.5	101.5	112	122	132

Length:

inch	29½"	30"	30½"	31"	31½"
cm	75	76	77.5	78.5	80

Yarn Requirements: Sugar Bush Nanaimo (shown in 1210 Mint)

balls	7	7	8	8	9
-------	---	---	---	---	---

Knitting Needle Requirements:

US 4 (3.5 mm) circular needles, 16" [40 cm] and 32" [80 cm] long
or size needed to obtain gauge

Materials:

Stitch markers, Stitch holders, Yarn needle

Gauge:

22 sts and 29 rows/rnds = 4" [10 cm] in Stockinette stitch

21 sts and 32 rows = 4" [10 cm] over lace pattern

INSTRUCTIONS

The instructions are written for smallest size. If changes are necessary for larger sizes the instructions will be written thus (). If one number is given, it applies to all sizes.

NOTE

- When shaping the sleeve cap, make sure all yo's can be worked with the accompanying dec, and vice versa. If a yo cannot be worked with its dec, work those sts in St st.

STITCH GUIDE

w&t (wrap and turn): On right side rows, bring yarn to front, slip next stitch purlwise, bring yarn to back, slip stitch back to left needle, turn work. On wrong side rows, bring

yarn to back, slip next stitch purlwise, bring yarn to front, slip stitch back to left needle, turn work. To hide wraps on RS rows, with right needle lift front of wrap and place on left needle, then knit (or purl) both together. On WS rows, lift back of wrap and place on left needle, then purl (or knit) both together.

PATTERN STITCHES

Stockinette Stitch:

Worked back and forth, knit RS rows, purl WS rows.

Worked in the round, knit all rounds.

Thistle Leaf Lace:

(multiple of 10 sts + 1 + 2 edge sts)

Row 1 and all other WS rows: K1. Purl to last st. K1.

SUGARBUSH LACY EH! LINE TUNIC | KNIT

SHOP KIT

Row 2: (RS). K1. ssk. *ssk. [yo. K1] 3 times. yo. K2tog. sk2p. Rep from * to last 10 sts. ssk. [yo. K1] 3 times. yo. [K2tog] twice. K1.

Row 4: K1. ssk. *K3. yo. K1. yo. K3. sk2p. Rep from * to last 10 sts. K3. yo. K1. yo. K3. K2tog. K1.

Row 6: K1. ssk. *K2. yo. K3. yo. K2. sk2p. Rep from * to last 10 sts. K2. yo. K3. yo. K2. K2tog. K1.

Row 8: K1. ssk. *K1. yo. K5. yo. K1. sk2p. Rep from * to last 10 sts. K1. yo. K5. yo. K1. K2tog. K1.

Row 10: K1. ssk. *yo. K1. yo. ssk. K1. K2tog. yo. K1. yo. sk2p. Rep from * to last 10 sts. yo. K1. yo. ssk. [K1. K2tog. yo] twice. K1.

Row 12: K1. ssk. *yo. K2. yo. sk2p. Rep from * to last 5 sts. yo. K2. yo. K2tog. K1.

Row 14: K2. *yo. K3. sk2p. K3. yo. K1. Rep from * to last st. K1.

Row 16: K2. *yo. K1. yo. K2tog. sk2p. ssk. [yo. K1] twice. Rep from * to last st. K1.

Row 18: K2. *yo. K3. sk2p. K3. yo. K1. Rep from * to last st. K1.

Row 20: K2. *K1. yo. K2. sk2p. K2. yo. K2. Rep from * to last st. K1.

Row 22: K2. *K2. yo. K1. sk2p. K1. yo. K3. Rep from * to last st. K1.

Row 24: K2. *K2tog. yo. K1. yo. sk2p. yo. K1. yo. ssk. K1. Rep from * to last st. K1.

Row 26: K1. ssk. *yo. K2. yo. sk2p. Rep from * to last 5 sts. yo. K2. yo. K2tog. K1.

Row 28: K1. ssk. *K3. yo. K1. yo. K3.

sk2p. Rep from * to last 10 sts. K3. yo. K1. yo. K3. K2tog. K1.
Rep Rows 1–28 for Thistle Leaf Lace.

A-LINE TANK BODY

Front Tail:

With shorter circular needle, cast on 153 (163, 173, 183, 193) sts. Do not join. Work Rows 1–28 of Thistle Leaf Lace. Piece should measure approx 3 1/2" [9 cm]. Set aside.

Back Tail:

With longer circular needle, work back tail same as front.

Joining:

With RS facing, knit front tail sts from shorter circular needle and dec 2 (dec 1, dec 0, inc 1, inc 2) st(s), then knit sts from back tail and dec 2 (dec 1, dec 0, inc 1, inc 2) st(s). 302 (324, 346, 368, 390) sts. Pm and join to work in the rnd.

Cont in St st over all sts, work 4 rnds even.

A-Line shaping:

Set-up (dec) rnd: K25. ssk. Pm for A-line shaping. K97 (108, 119, 130, 141). Pm for A-line shaping. K2tog. K25. Pm for side. K25. ssk. Pm for A-line shaping. K97 (108, 119, 130, 141). Pm for A-line shaping. K2tog. Knit to end of rnd. 4 sts dec.

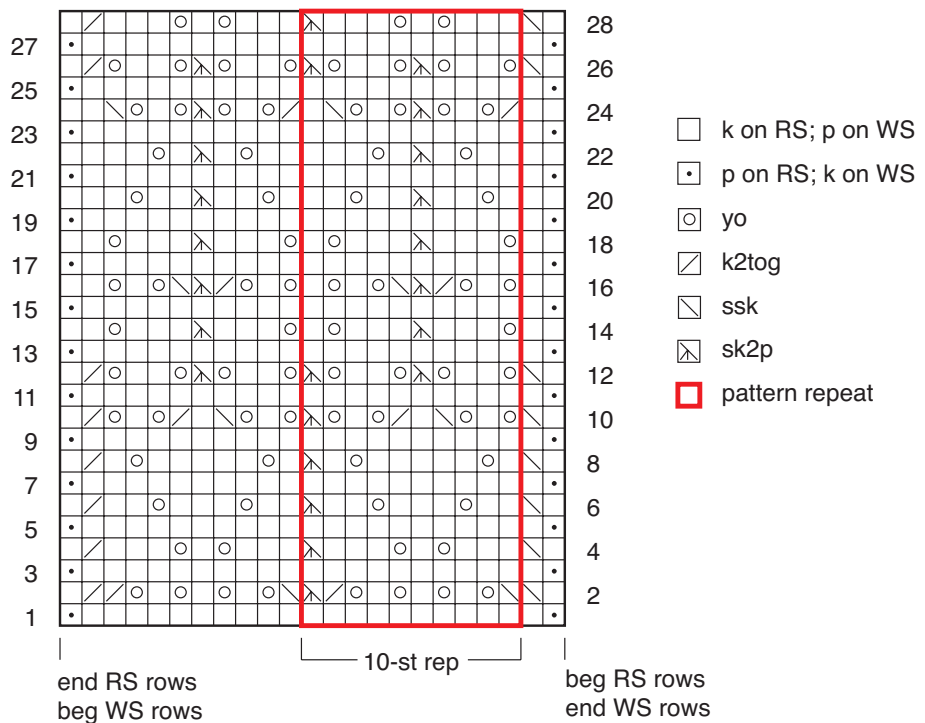
Slipping markers as you come to them, [work 3 rows even, work dec rnd, work 5 rnds even, work dec rnd] 5 times, then rep dec rnd every 4 rnds 15 times. 198 (220, 242, 264, 286) sts rem. Remove A-line shaping markers on last dec rnd.

Cont even until piece measures 22 1/4" [56.5 cm] from beg, ending last rnd 4 (6, 6, 7, 8) sts before end of rnd.

Divide Front and Back:

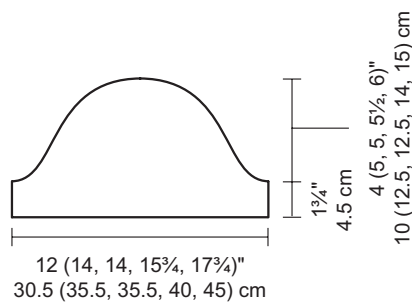
Next rnd: Cast off 8 (12, 12, 14, 16) sts for armhole. Knit to 4 (6, 6, 7, 8) sts

Thistle Leaf Lace



SUGARBUSH LACY EH! LINE TUNIC | KNIT

SHOP KIT



before side marker. Cast off 8 (12, 12, 14, 16) sts for armhole, then work to end of rnd. 91 (98, 109, 118, 127) sts rem each for front and back. Place front sts on holder.

BACK

Cast off 4 sts at beg of next O (O, O, 2, 2) rows, 3 sts at beg of next 2 rows, then 2 sts at beg of next 4 rows. Dec 1 st each end every RS row 3 (4, 5, 4, 7) times. 71 (76, 85, 88, 91) sts rem. Work even until armholes measure 6 1/2 (7, 7 1/2, 8, 8 1/2)" [16.5 (18, 19, 20.5, 21.5) cm], ending with a WS row.

Shape neck and shoulders:

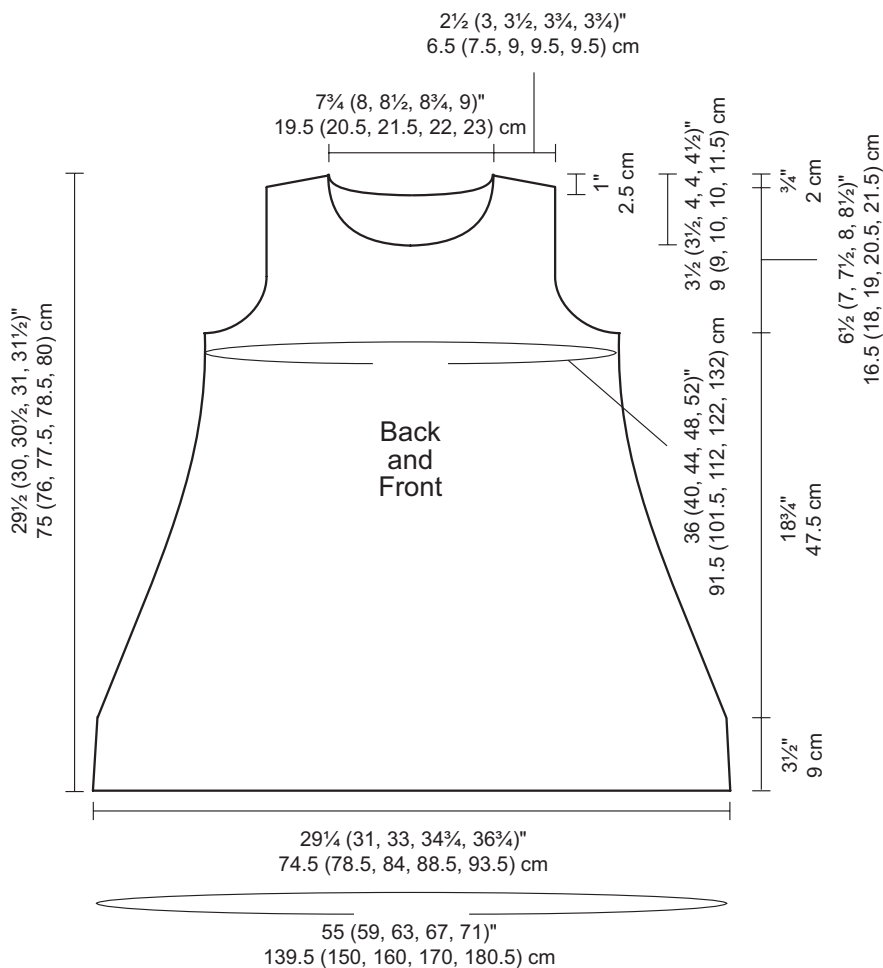
Pm each side of centre 31 (32, 35, 36, 37) sts.

Next row: (RS). Knit to marker. Join a second ball of yarn and cast off centre 31 (32, 35, 36, 37) sts for neck, then knit to end of row. 20 (22, 25, 26, 27) sts rem for each shoulder.

Work both sides at the same time with separate balls of yarn.

Short-row 1: (WS). Purl to neck edge. Cast off 4 sts. Work to last 3 (4, 4, 5, 6) sts. w&t.

Short-row 2: (RS). Knit to neck edge.



Cast off 4 sts. Work to last 3 (4, 4, 5, 6) sts. w&t.

Short-row 3: Purl to neck edge. Cast off 2 sts. Work to 3 (4, 5, 5, 5) sts before last turn. w&t.

Short-row 4: Knit to neck edge. Cast off 2 sts. Work to 3 (4, 5, 5, 5) sts before last turn. w&t.

Short-row 5: Purl to neck edge. Purl to 4 (4, 5, 5, 5) sts before last turn. w&t.

Short-row 6: Knit to neck edge. Knit to 4 (4, 5, 5, 5) sts before last turn. w&t.

Short-row 7: Purl to neck edge. Cast off rem 14 (16, 19, 20, 21) sts purlwise, picking up wraps and purl them tog

with the sts they wrap.

Cast off rem 14 (16, 19, 20, 21) sts knitwise, picking up wraps and knit them tog with the sts they wrap.

FRONT

Shape armholes same as back. 71 (76, 85, 88, 91) sts rem.

Work even until armholes measure 3 3/4 (4 1/4, 4 1/4, 4 3/4, 4 3/4)" [9.5 (11, 11, 12, 12) cm], ending with a WS row.

Shape neck and shoulders:

Pm each side of centre 11 (12, 15, 16, 17) sts.

Next row: (RS). Knit to marker. Join a second ball of yarn and cast off centre 11 (12, 15, 16, 17) sts for neck,

then knit to end of row. 30 (32, 35, 36, 37) sts rem for each side.

Work both sides at the same time with separate balls of yarn. Cast off at each neck edge 4 sts once, 3 sts once, 2 sts twice, then 1 st 4 (4, 3, 3, 2) times, then 1 st every 4 rows 1 (1, 2, 2, 3) time(s). AT THE SAME TIME, when armholes measure 6¹/₂ (7, 7¹/₂, 8, 8¹/₂)" [16.5 (18, 19, 20.5, 21.5) cm], end with a WS row.

Shape shoulders same as back.

FINISHING

Weave in ends. Block to finished measurements.

Sew shoulder seams.

Neck edging:

With shorter circular needle and RS facing, pick up and knit 65 (66, 71, 72, 77) sts evenly along front neck edge, then 53 (54, 57, 58, 59) sts along back neck edge. 118 (120, 128, 130, 136) sts. Pm and join to work in the rnd.

Next rnd: *K1. P1. Rep from * around. Rep last rnd 2 more times. Cast off all sts in rib.

Armhole edging:

With shorter circular needle and RS facing, beg at bottom of armhole, pick up and knit 102 (108, 115, 123, 129) sts evenly along armhole edge. Pm and join to work in the rnd. Work same as neck edging. Rep around rem armhole.

A-LINE TUNIC

BODY

Work body same as Tank.

SLEEVES

With shorter circular needle, cast on 63 (73, 73, 83, 93) sts. Do not join.

Beg Thistle Leaf Lace and work until piece measures 1³/₄" [4.5 cm], ending with a WS row.

Shape cap:

Cast off 4 (6, 6, 7, 8) sts at beg of next 2 rows, 4 sts at beg of next 0 (0, 0, 2, 2) rows, 3 sts at beg of next 2 rows, then 2 sts at beg of next 4 rows. Dec 1 st each end every RS row 12 (16, 16, 15, 14) times, then every 4 rows 0 (0, 0, 1, 2) time(s). Cast off 3 (2, 2, 2, 2) sts at beg of next 2 (2, 2, 2, 4) rows. 11 (11, 11, 11, 15) sts rem. Cast off rem sts.

FINISHING

Weave in ends. Block to finished measurements.

Sew shoulder seams. Sew sleeve seams. Sew in sleeves.

Neck edging:

With shorter circular needle and RS facing, pick up and knit 65 (66, 71, 72, 77) sts evenly along front neck edge, then 53 (54, 57, 58, 59) sts along back neck edge. 118 (120, 128, 130, 136) sts. Pm and join to work in the rnd.

Next rnd: *K1. P1. Rep from * around. Rep last rnd 2 more times. Cast off all sts in rib.

ABBREVIATIONS

approx = approximately

beg = begin/beginning

cont = continue/continuing

dec = decrease/decreased

inc = increase/increased/increasing

k = knit

k2tog = knit next 2 sts together

p = purl

pm = place marker

rem = remain/remaining

rep = repeat

rnd(s) = round(s)

RS = right side

sk2p = slip 1 st knitwise, knit 2 together, pass slipped stitch over the k2tog

ssk – slip, slip, knit – slip 2 sts knitwise, one at a time, insert left needle through front of loops and knit sts together through the back loops

st(s) = stitch(es)

St st = stockinette stitch

tog = together

WS = wrong side

yo = yarn over

SUGARBUSH LACY EH! LINE TUNIC | KNIT






SHOP KIT

Designer: **Therese Chynoweth** is an avid, mostly self-taught knitter and designer. She loves incorporating techniques from many different knitting traditions into her work. Her book, *Norwegian Knitting Techniques for Today's Knitter*, was released by Wiley Publishing in 2010.



1.75 oz/50 g
164 yds/150 m

80% baby alpaca,
20% mulberry silk /
80% bébé alpaga,
20% soie de mûrier

    
28 sts = 4" [10 cm]
US 3 (3.25 mm)


SUPER FINE