



KNIT 1 SKILL LEVEL: INTERMEDIATE

ABBREVIATIONS

Approx = Approximately

Beg = Beginning

K = Knit

K2(3)tog = Knit next 2(3) stitches together

P = Purl

Pat = Pattern

Rem = Remaining

Rep = Repeat

RS = Right side

Ss2k = Slip next 2 stitches knitwise one at a time. K1. Pass them back onto left-hand needle over knit stitch

Sl1wyif = Slip next stitch purlwise with yarn at front of work

Sk2p = Slip next stitch knitwise. K2tog. Pass slipped stitch over

Ssk = Slip next 2 stitches knitwise one at a time. Pass them back onto left-hand needle, then knit through back loops together

St(s) = Stitch(es)

WS = Wrong side

W&T = Bring yarn to front of work. Slip next stitch purlwise. Bring yarn to back of work. Slip stitch back onto left-hand needle. Turn. When working the wrapped stitch in next row, pick up the wrap and work it tog with the wrapped stitch

Yo = Yarn over

MEASUREMENTS

Approx 50" [127 cm] wide x 14" [35.5 cm] deep.

GAUGE

20 sts and 25 rows = 4" [10 cm] in stocking st.

INSTRUCTIONS

- This shawl beg with the leaf lace border, then shaped using short-rows to form a slightly crescent shape.
- If desired, use stitch markers after each rep to make it easier to follow the pattern, and remove them as you work the short-rows.

MATERIALS

Sugar Bush® Nanaimo™ (50 g/1.75 oz; 164 yds/150 m)

Raspberry (1203)

3 balls

Size U.S. 4 (3.5 mm) circular knitting needle 36" [91.5 cm] long **or size needed to obtain gauge.** Stitch markers. Yarn needle.

- Leaf Lace Pat along the lower edge **does not** maintain the same number of sts on every row. Two sts are decreased in every rep on the first row, then the original number of sts are returned on the 7th row.

Cast on 245 sts. **Do not** join. Working back and forth across needle in rows, proceed as follows:

1st row: (Set-up row 1- RS). K2. *P1. yo. K1. ssk. P1. K2tog. K1. P1. K1. ssk. P1. K2tog. K1. yo. Rep from * to last 3 sts. P1. K2. 215 sts.

2nd row: (Set-up row 2 - WS). Sl1wyif. K2. *P3. (K1. P2) twice. K1. P3. K1. Rep from * to last 2 sts. K2.

Proceed in Leaf Lace Pat as follows: (See Chart on page 3).

1st row: Sl1wyif. K1. *P1. yo. K1. yo. ssk. P1. K2tog. P1. ssk. P1. K2tog. yo. K1. yo. Rep from * to last 3 sts. P1. K2.

2nd row: Sl1wyif. K2. *P4. (K1. P1) twice. K1. P4. K1. Rep from * to last 2 sts. K2.

3rd row: Sl1wyif. K1. *P1. yo. K3. yo. sk2p. P1. K3tog. yo. K3. yo. Rep from * to last 3 sts. P1. K2.

4th row: Sl1wyif. K2. *P6. K1. Rep from * to last 2 sts. K2.

5th row: Sl1wyif. K1. *P1. yo. K5. yo. sk2p. yo. K5. yo. Rep from * to last 3 sts. P1. K2.

6th row: Sl1wyif. K2. *P15. K1. Rep from * to last 2 sts. K2.

7th row: Sl1wyif. K1. *P1. yo. K1. ssk. P1. K2tog. (K1. yo) twice. K1. ssk. P1. K2tog. K1. yo. Rep from * to last 3 sts. P1. K2. 245 sts.

8th row: Sl1wyif. K2. *P3. K1. P7. K1. P3. K1. Rep from * to last 2 sts. K2.

9th row: Sl1wyif. K1. *P1. yo. K1. ssk. P1. K2tog. K1. P1. K1. ssk. P1. K2tog. K1. yo. Rep from * to last 3 sts. P1. K2. 215 sts.

10th row: Sl1wyif. K2. *P3. (K1. P2) twice. K1. P3. K1. Rep from * to last 2 sts. K2.

Rep 1st to 10th rows twice more, then 1st to 6th rows once more.

Begin Short-rows:

Short-row 1: (RS). Sl1wyif. K1. *P1. yo. K2tog. K11. ssk. yo. Rep from * 7 times more. P1. w&t.

Short-row 2: (WS). K1. P15. K1. Turn.

Short-row 3: Sl1wyif. yo. K2tog. K11. ssk. yo. P1. yo. K2tog. K6. w&t.

Short-row 4: P8. K1. P15. K1. P8. w&t.

Short-row 5: K6. (ssk. yo. P1. yo. K2tog. K11) twice. ssk. yo. P1. w&t.

Short-row 6: K1. (P15. K1) 3 times. Turn.

Short-row 7: Sl1wyif. (yo. K2tog. K11. ssk. yo. P1) 3 times. yo. K2tog. K6. w&t.

Short-row 8: P8. (K1. P15) 3 times. K1. P8. w&t.

Short-row 9: K6. (ssk. yo. P1. yo. K2tog. K11) 3 times. ssk. yo. P1. yo. K2tog. K10. w&t.

Short-row 10: P12. (K1. P15) 3 times. K1. P12. w&t.

Short-row 11: K10. (ssk. yo. P1. yo. K2tog. K11) 4 times. ssk. yo. P1. Turn.

Short-row 12: Sl1wyif. (P15. K1) 5 times. Turn.

Short-row 13: P1. (yo. K2tog. K11. ssk. yo. P1) 5 times. yo. K2tog. K2. w&t.

Short-row 14: P4. (K1. P15) 5 times. K1. P4. w&t.

Short-row 15: K2. (ssk. yo. P1. yo. K2tog. K11) 5 times. ssk. yo. P1. yo. K2tog. K6. w&t.

Short-row 16: P8. (K1. P15) 5 times. K1. P8. w&t.

Short-rows 17th to 50th: Working 4 more sts before turning each row and working sts into pat, rep Short-rows 9th to 16th 4 times more, then rep Short-rows 9 and 10 once more, taking inc sts into pat. 6 sts rem out of work at each end.

Short-row 51: (RS). Work to end of row. Turn.

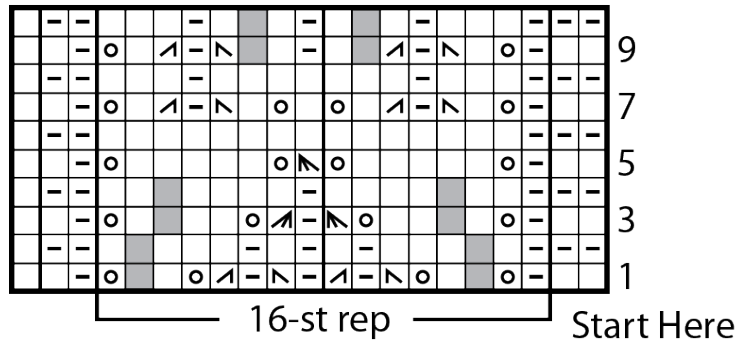
Next 2 rows: Sl1wyif. Knit to end of row.

Cast off all sts knitwise.

FINISHING

Pin Shawl to measurements. Cover with a damp cloth leaving cloth to dry.

Leaf Lace



Key

- Knit on RS rows. Purl on WS rows.
- ▣ Purl on RS rows. Knit on WS rows.
- ▤ K2tog
- ▥ ssk
- ▦ sk2p
- ▧ K3tog
- ⊙ yo
- no stitch

