



11/Fair Isle and Striped Outdoor Set

HEADBAND and MITTS

To fit average woman

SCARF - Finished measurements:

40" [102 cm] long

Yarn Requirements: Sugar Bush Itty-Bitty (shown with Main Colour (MC) in 5001 Buttercream, Contrast A in 5003 Midnight, Contrast B in 5007 Faded Denim, Contrast C in 5005 Timber, Contrast D in 5009 Sunglow)
MC - 5 balls, A - 3 balls, B - 1 ball, C - 1 ball, D - 2 balls

Knitting Needle Requirements:

Set of 4 US 3 (3.25 mm) double-pointed needles **or size needed to obtain gauge**

Abbreviations: see page 4

Materials:

Stitch marker, Stitch holder, One button

Gauge:

28 sts and 36 rows = 4" [10 cm] in stockinette st.

INSTRUCTIONS

HEADBAND

With MC, cast on 48 sts.

Divide sts equally onto 3 needles.

Join in rnd, placing marker on 1st st.

Knit 2 rnds.

Work Chart I to end of chart, reading rows from right to left noting 12 st rep will work 4 times.

(See Chart I on page 25)

Rep 25th to 56th rows of Chart I 3 times more, then rep 1st to 5th rows once.

With MC, knit 2 rnds.

Cast off.

Sew cast on to cast off edges together.

Earflaps (optional)

With A, cast on 40 sts.

Divide sts into 12, 16 and 12 on 3 needles. Join in rnd, placing marker at 1st st.

Knit 2" [5 cm].

Slip 2 sts from 1st and 3rd needles, onto 2nd needle. Sts are now divided: 10, 20, and 10 on 3 needles.

Proceed as follows:

Rnd 1: 1st needle, Knit to last 3 sts.



SUGARBUSH FAIR ISLE AND STRIPED OUTDOOR SET | KNIT

SHOP KIT

K2tog. K1. 2nd needle, K1. Sl1. K1. pss0. Knit to last 3 sts. K2tog. K1. 3rd needle, K1. Sl1. K1. pss0. Knit to end of needle.

Rnd 2: Knit.

Rep last 2 rnds to 12 sts, divided as 3, 6, and 3 on 3 needles.

Knit 6½" [16.5 cm] even.

Knit sts from 1st needle, onto 3rd needle.

Break yarn, leaving an end 8" [20.5 cm] long.

Graft 2 sets of 6 sts tog.

Sew cast on edge of earflap tog and sew earflaps to headband.

SCARF

With MC, cast on 108 sts. Divide equally on 3 needles. Join in rnd, placing marker at 1st st.

Knit 4 rnds.

Work 8th to 39th rows of Chart I 10 times, noting the 12 st rep will be worked 9 times, then work 8th to 22nd rows once.

With MC, knit 4 rnds.

Cast off.

Sew ends closed.

Fringe:

Cut 5" [12.5 cm] lengths of A. Taking 3 strands tog, knot into fringe across cast on and cast off edges.

MITTS

Right Mitten:

With A, cast on 52 sts. Divide sts into 16, 20 and 16 on 3 needles. Join in round, placing marker at 1st st.

Rnd 1: *K2. P2. Rep from * around.

Work 3½" [9 cm] in (K2. P2) ribbing.

Next rnd: *K5. Inc 1 st in next st. Rep from * to last 4 sts. K4. 60 sts.

Break A.

Next rnd: With MC, knit to last 5 sts. Slip 5 sts onto st holder. Turn.

Next rnd: Work across 55 sts. K1. Purl to last st. K1.

Working back and forth on 3 needles, proceed as follows: Work Chart II to end of chart, reading knit rows from right to left and purl rows from left to right. (See *Chart II on page 25*)

Next row: With MC, K1. Purl to last st. K1.

Next row: With MC, knit across 3 needles, casting on 5 sts at end of 3rd needle. Divide sts into equal numbers. Join in rnd. 60 sts.

Proceed as follows:

Work 20th to 42nd rows of Chart I, reading rows from right to left noting 12 st rep will be worked 5 times.

Next rnd: *K3. K2tog. Rep from * around. 48 sts.

Work 1st to 6th row of Chart I noting 12 st rep will work 4 times.

Next rnd: With MC, *K2. K2tog. Rep from * around. 36 sts. Break MC.

With A, knit 5 rnds even.

Next rnd: *K1. K2tog. Rep from * around. 24 sts

Knit 5 rnds even.

Next rnd: *K2tog. Rep from * around. 12 sts. Break A.

Thread yarn through rem sts. Draw up and fasten securely.

Thumb gusset and thumb:

Slip 5 sts from st holder onto needle.

With RS of work facing join A.

Working back and forth, proceed as follows:

Rows 1 and 3: (K1. P1) twice. K1.

Rows 2 and 4: K2. P1. K2.

Row 5: K1. P1 (seam st). Knit into front, back and front of next st. P1 (seam st). K1. 7 sts.

Row 6: K2. P3. K2.

Row 7: K1. P1. K3. P1. K1.

Row 8: K2. P3. K2.

Row 9: K1. P1. Inc 1 st each of next 2 sts. K1. P1. K1. 9 sts

Row 10 and alt rows: K2. Purl to last 2 sts. K2.

Row 11: K1. P1. K5. P1. K1.

Row 13: K1. P1. Inc 1 st in next st. K2. Inc 1 st in next st. K1. P1. K1. 11 sts.

SUGARBUSH FAIR ISLE AND STRIPED OUTDOOR SET | KNIT

SHOP KIT

Row 15: K1. P1. K7. P1. K1.

Row 17: K1. P1. Inc 1 st in next st. K4. Inc 1 st in next st. K1. P1. K1. 13 sts. Cont inc in this manner, every 4th row, until there are 17 sts.

Next row: K2. Purl to last 2 sts. K2.

Next row: Knit, casting on 5 sts at end of row. 22 sts.

Divide sts into 6, 6 and 10 on 3 needles, join in rnd.

Proceed as follows:

Next rnd: Knit to last 4 sts. K2tog twice. 20 sts.

Rearrange sts on needles dividing sts equally on 3 needles (6, 6, 8).

Knit 2 1/4" [5.5 cm] even.

Next rnd: (K2tog) 9 times. Break A.

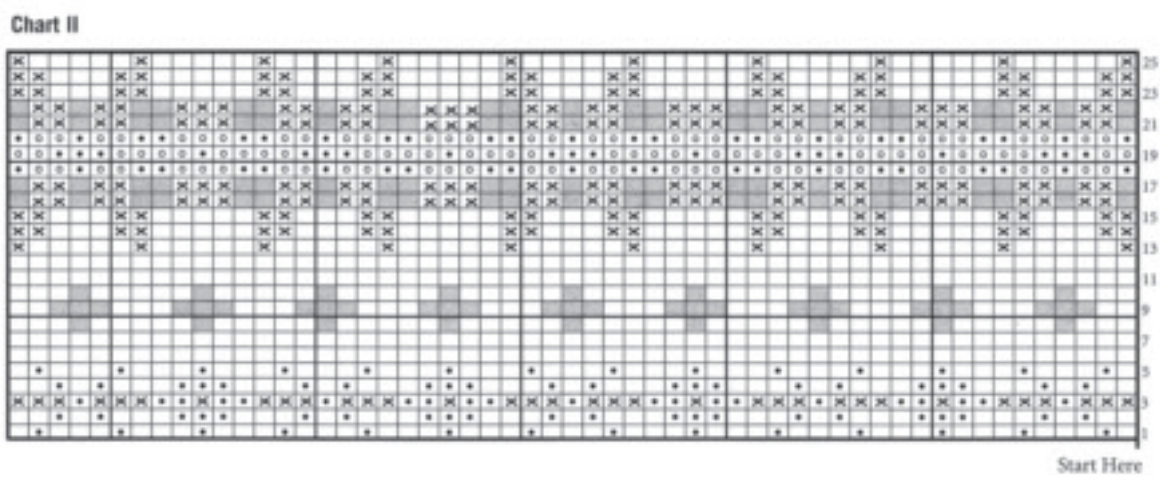
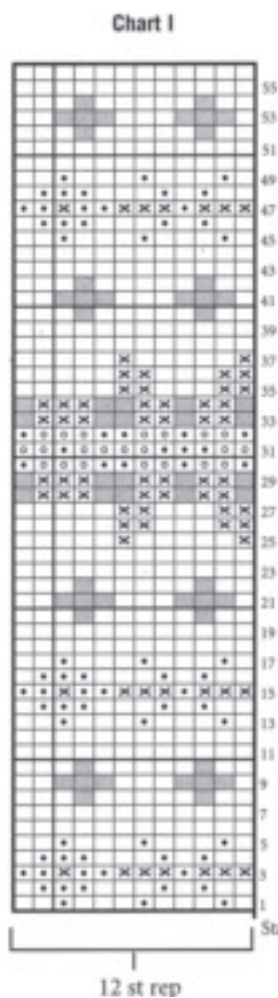
Thread yarn through rem sts.

Draw up and fasten securely.

Sew gusset to mitt and work in loose ends.

Left Mitten:

Work as given for Right Mitten.



ABBREVIATIONS

alt = alternate(ing)

approx = approximately

beg = begin/beginning

ch = chain

cn = cable needle

cont = continue/continuing

dc = double crochet

dc2tog = double crochet decrease

dec = decrease/decreases/decreasing

dpn(s) = double-pointed needle(s)

hdc = half double crochet

inc = increase/increases/increasing

k = knit

k2(3)tog = knit next 2 (3) stitches together

M1 = make 1 st by picking up horizontal loop lying before next st and knitting into back of loop

p = purl

p2tog = purl next 2 stitches together

p2togtbl = purl next 2 stitches together through back loops

pat = pattern

pm = place marker

psso = pass slipped stitch over

rem = remain/remaining

rep = repeat

rnd(s) = round(s)

RS = right side

sc = single crochet

sk = skip

skd = skipped

sl = slip

sl st = slip stitch

sl1 = slip 1 stitch

slk = slip next stitch knitwise

slp = slip next stitch purlwise

sm = slip marker

sp = space

ssk = slip 2 sts knitwise, one at a time, insert left needle into front of these 2 stitches, then knit them together through the back loops

St st = stockinette stitch

st(s) = stitch(es)

tbl = through back loop(s)

tog = together

WS = wrong side

yfwd = yarn forward

yo = yarn over

STITCH GLOSSARY

Garner St = knit every row. (Rnds – knit 1 rnd, purl 1 rnd.)

Stockinette st = (Rows) knit on RS, purl on WS. (Rnds – knit every rnd.)

Reverse stockinette st = (Rows) purl on RS, knit on WS. (Rnds – purl every rnd.)

GRAFTING



The instructions are written for smallest size. If changes are necessary for larger sizes the instructions will be written thus ().