



KNIT
SKILL LEVEL
BEGINNER

Designed by Heather Lodinsky

What you will need:

RED HEART® Reflective™: 1 ball each of 8429 Grey **A**, and 8884 Peacock **B**

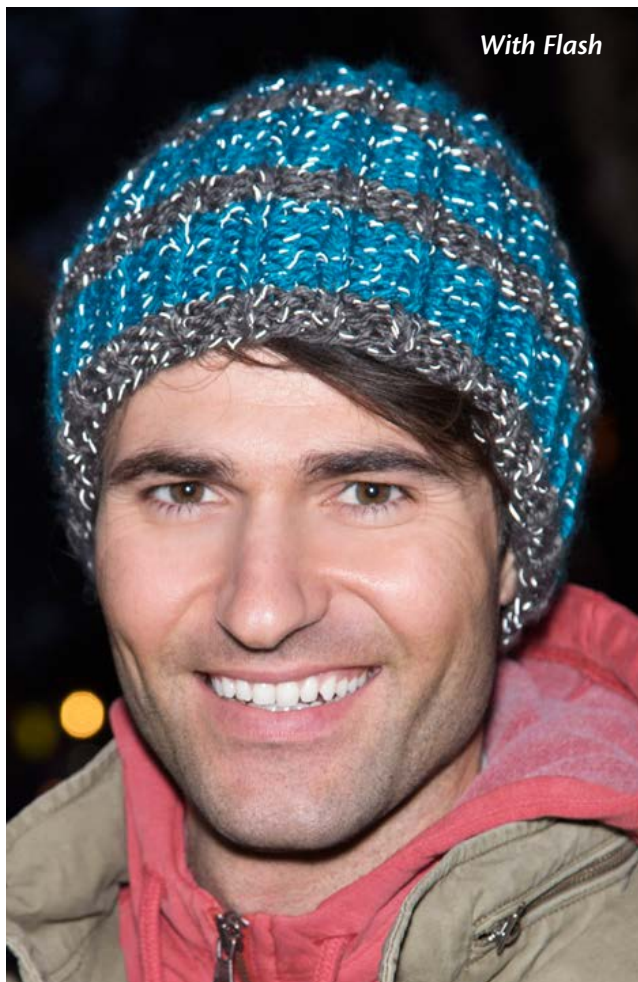
Susan Bates® Knitting Needles: 6mm [US 10]

Yarn needle

GAUGE: 14 sts = 4" (10cm); 19 rounds = 4" (10 cm) in rib pattern.
CHECK YOUR GAUGE. Use any size needles to obtain the gauge.



RED HEART® Reflective™, Art. E820, available in solids 3.5 oz (100g) 88 yd (80m) balls



With Flash

In a Flash Knit Beanie

This amazing yarn reflects light that hits it for a stand-out look with the flash of a camera. It's easy enough for beginner knitters, and fast enough for a quick gift whether for a guy or gal.

SHOP KIT

Directions are for Women's size; changes for Men's size are in parentheses.

Finished Circumference: 17½ (19½)" (44.5 (49.5) cm), will easily stretch to fit a range of sizes

Finished Height: 9 (10)" (23 (25.5) cm)

Notes

- Hat is worked back and forth in rows, beginning at lower edge and changing colors to create stripes.
- Top is gathered and side edges sewn for back seam.
- When changing color, do not cut old color. Carry color not in use carefully up side of piece when next needed. Hide carried strands on wrong side (inside) of hat when sewing back seam.
- Hat can be worked using **A** and **B** as directed or by reversing the colors.

HAT

With **B**, cast on 62 (68) sts loosely.

Row 1 (wrong side): K2, *p1, k2; repeat from * to end of row.

Row 2: P2, *k1, p2; repeat from * to end of row.

Row 3: Repeat Row 1.

Rows 4–11: With **A**, repeat Rows 2 and 3 four times.

Rows 12–15: With **B**, repeat Rows 2 and 3 twice.

Rows 16–27: Repeat Rows 4-15.

Rows 28–35 (39): With **A**, repeat Rows 2 and 3 for 4 (6) more times.

Shape Top of Hat

Row 1 (right side): *P1, k2tog; repeat from * to last 2 sts, p2—42 (46) sts.

Row 2: K2, *p1, k1; repeat from * to end of row.

Row 3: *K2tog; repeat from * to end of row—21 (23) sts.



Without Flash

Row 4: Purl.

Row 5: *K2tog; repeat from * to last st, k1—11 (12) sts.

Row 6: Purl.

Row 7: *K2tog; repeat from * to last 1 (0) sts, k1 (0)—6 sts.

Cut yarn, leaving an 18" (45.5cm) tail.

Thread tail onto yarn needle and draw through remaining 6 stitches. Pull tail to gather top of hat. Continuing with tail, sew side edges together for back seam.

FINISHING

Weave in ends.

ABBREVIATIONS

A and B = Color A and Color B; **k** = knit; **k2tog** = knit next 2 stitches together; **p** = purl; **st(s)** = stitch(es); * = repeat whatever follows the * as indicated.



2015
WOMEN'S CHOICE AWARD®
AMERICA'S MOST RECOMMENDED
YARN BRAND