



KNIT | SKILL LEVEL: INTERMEDIATE

## ABBREVIATIONS

**Alt** = Alternate

**Beg** = Begin(ning)

**Cont** = Continue(ity)

**C2B** = Slip next stitch onto cable needle and leave at back of work. K1, then K1 from cable needle

**C2F** = Slip next stitch onto cable needle and leave at front of work. K1, then K1 from cable needle

**C4B** = Slip next 2 stitches onto cable needle and leave at the back of work. K2, then K2 from cable needle

**Dec** = Decrease(ing)

**Inc** = Increase

**K** = Knit

**Kfb** = Increase 1 stitch by knitting into front and back of next stitch

**K2tog** = Knit next 2 stitches together

**P** = Purl

**Pat** = Pattern

**Psso** = Pass slipped stitch over

**PM** = Place marker

**Rem** = Remain(ing)

**Rep** = Repeat

**Rnd(s)** = Round(s)

**RS** = Right side

**Ssk** = Slip next 2 stitches knitwise one at a time. Pass them back onto left-hand needle, then knit through back loops together

**St(s)** = Stitch(es)

**Tog** = Together

**WS** = Wrong side

## MATERIALS

**Red Heart® Super Saver®** (Flecks: 5 oz/141 g; 260 yds/238 m)

**Sizes**                      **S**      **M**      **L**      **XL**

Aran Fleck (4313)      **1**      **2**      **2**      **2**      **ball(s)**

Size U.S. 8 (5 mm) Susan Bates® knitting needles. Size U.S. 7 (4.5 mm) Susan Bates® circular knitting needle 36" [91.5 cm] long. Set of 4 size U.S. 7 (4.5 mm) Susan Bates® double-pointed knitting needles **or size needed to obtain gauge**. Cable needle. Stitch holder. Susan Bates® Split-Lock Stitch Count Markers. Susan Bates® Steel Yarn Needle.

## SIZES

### To fit chest measurement

**S**      **10" [25.5 cm]**

**M**      **16" [40.5 cm]**

**L**      **19" [48 cm]**

**XL**      **24" [61 cm]**

### Finished chest

**S**      **12" [30 cm]**

**M**      **18" [45.5 cm]**

**L**      **21" [53.5 cm]**

**XL**      **26" [66 cm]**

## GAUGES

17 sts and 23 rows = 4" [10 cm] with larger needles in stocking st.  
21 sts and 23 rows = 4" [10 cm] with larger needles in Cable Panel Pat.

## INSTRUCTIONS

*The instructions are written for smallest size. If changes are necessary for larger sizes the instructions will be written thus (.). Numbers for each size are shown in the same color throughout the pattern. When only one number is given in black, it applies to all sizes.*

**Cable Panel** (worked over 10 sts)  
See chart on page 3.

**1st row:** (RS). P2. C2B. P2. K4.

**2nd and alt rows:** Knit all knit sts and purl all purl sts as they appear.

**3rd row:** P2. C2F. P2. C4B.

**5th row:** As 1st row.

**7th row:** P2. C2F. P2. K4.

**8th row:** As 2nd row.

These 8 rows form Cable Panel.

## DOG COAT

**Collar:** Beg at neck edge, with pair of needles, cast on 43 (51-67-79) sts.

**1st row:** (RS). K1. \*P1. K1. Rep from \* to end of row.

**2nd row:** P1. \*K1. P1. Rep from \* to end of row.

Rep last 2 rows (K1. P1) ribbing for 4" [10 cm], ending on a 2nd row.

**1st row:** K3 (4-7-8). \*Kfb. K2 (2-2-3). Rep from \* 12 (14-18-16) times more. Knit to end of row. 56 (66-86-96) sts.

**2nd to 4th rows:** Knit. PM at end of last row.

Proceed in pat as follows:

**1st row:** (RS). K2. Work 1st row of Cable Panel 5 (6-8-9) times. P2. K2.

**2nd row:** P2. Work 2nd row of Cable Panel 5 (6-8-9) times. K2. P2. Cable Panel pat is now in position.

**Note:** Take inc sts into Cable Panel pat.

Keeping cont of Cable Panel pat, inc 1 st each end of needle on next 2 (10-8-10) rows. 60 (86-102-116) sts.

Inc 1 st at each end on next and every following alt row 1 (3-3-8) time(s) more, ending on a WS row. 64 (96-110-134) sts.

Cont even in pat for 4 (0-2-0) rows.

**Leg Openings:** Keeping cont of pat, proceed as follows:

**Next row:** (RS). Pat across 8 (13-16-18). Cast off 5 (8-8-13) sts. Pat across 38 (54-62-72) (including st on needle after cast off). Cast off 5 (8-8-13) sts. Pat across 8 (13-16-18).

**Note:** All Leg sections are worked at same time using separate balls of yarn for each section.

Beg on a WS row, work even in pat for 7 (9-11-13) rows, ending on a WS row.

**Joining row:** (RS). Pat across 8 (13-16-18). Cast on 5 (8-8-13) sts. Pat across 38 (54-62-72). Cast on 5 (8-8-13) sts. Pat across 6 (11-13-15). 64 (96-110-134) sts.

Cont even in pat until work from marked row measures 5½ (7-8-9½)" [14 (18-20.5-24) cm], ending on a WS row. PM (second set) at each end of last row.

**Belly and back shaping:** Keeping cont of pat, proceed as follows:

Cast off 8 (13-15-17) sts at beg of next 2 rows. 48 (70-80-100) sts.

**Next row:** (RS). K1. ssk. Pat to last 3 sts. K2tog. K1.

**Next row:** Work even in pat.

Rep last 2 rows 6 (8-7-7) times more. 34 (52-64-84) sts.

**Sizes M, L and XL only:**

**Next 2 rows:** Work even in pat.

**Next row:** (RS). K1. ssk. Pat to last 3 sts. K2tog. K1.

**Next row:** Work even in pat.

Rep last 4 rows (1-5-5) time(s) more. (48-52-72) sts.

**All sizes:** Leave rem 34 (48-52-72) sts on a st holder.

## FINISHING

**Body and Back edging:** With RS facing and circular needle, beg at right marker of second set of markers, pick up and knit **29** (**35-45-55**) sts along Body to Back st holder. K**34** (**48-52-72**), dec **7** (**13-13-13**) sts evenly across Back st holder. Pick up and knit **29** (**35-45-65**) sts along opposite side of Body to left marker. **85** (**105-129-169**) sts. **Do not** join. Working back and forth across needle in rows proceed as follows:

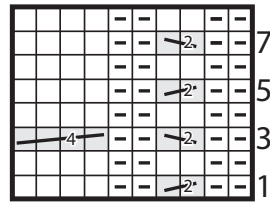
Beg on a WS row, work 7 rows in (K1, P1) ribbing as given for Collar. Cast off loosely in ribbing.

Sew shaped belly seam and side of edging.

**Leg edging:** (RS). With double pointed needles, pick up and knit **24** (**32-32-40**) sts evenly around leg opening. Divide sts on 3 needles. Join in rnd, PM on first st.

Work **8** (**10-12-14**) rnds in (K1, P1) ribbing. Cast off loosely in ribbing.

Cable Panel



Start Here

## Key

□ = Knit on RS rows. Purl on WS rows.

▢ = Knit on WS rows. Purl on RS rows.

▤ = C2B

▥ = C2F

▧ = C4B

