



MATERIALS

Red Heart® Boutique Unforgettable® (3.5 oz/100 g; 280 yds/256 m)

Sizes	S	M	L	XL
Petunia (3950)	1	1	2	3

Size U.S. 7 (4.5 mm) knitting needles **or size needed to obtain gauge.** Stitch markers. Stitch holder, 4 (4, 6, 6) ¼ - ⅜ (6-10mm) buttons. Yarn needle.



KNIT | SKILL LEVEL: EASY

ABBREVIATIONS

Approx = Approximately

Beg = Beginning

Cont = Continue(ity)

Dec = Decreasing

Inc = Increasing

K = Knit

K2tog = Knit next 2 stitches together

P = Purl

P2tog = Purl next 2 stitches together

P2togtbl = Purl next 2 stitches together through back loops

Pat = Pattern

PM = Place marker

Rem = Remaining

Rep = Repeat

RS = Right side

SM = Slip marker

Ssk = Slip next 2 stitches knitwise one at a time. Pass them back onto left-hand needle, then knit through back loops together

St(s) = Stitch(es)

Tog = Together

WS = Wrong side

Yo = Yarn over

SIZES

To fit dog chest measurement

S 10" [25.5 cm]

M 16" [40.5 cm]

L 24" [61 cm]

XL 30" [76 cm]

GAUGE

18 sts and 24 rows = 4" [10 cm] in pat.

INSTRUCTIONS

Note: Sweater is worked in two pieces, Back and Chest, each beg at lower edge. Collar is worked across top of both pieces.

Finished Chest:

15 (19-23-27)" [**38** (48.5-58.5-68.5) cm]

Finished Length:

11 (14-18-21½)" [**28** (35.5-45.5-54.5) cm], excluding collar.

The instructions are written for smallest size. If changes are necessary for larger sizes the instructions will be written thus (). Numbers for each size are shown in the same color throughout the pattern. When only one number is given in black, it applies to all sizes.

Puppy Paw Lace Pat (beg over 7 sts, inc to 9 sts and dec back to 7 sts). See Chart on page 3.

1st row: (RS). K2. K2tog. yo. K3.

2nd row: P3, (P1. yo. P1) in next st. P3. 9 sts.

3rd row: K2tog. yo. K2tog. K1. ssk. yo. ssk. 7 sts.

4th row: Purl.

5th row: K1. K2tog. yo. K1. yo. ssk. K1.

6th row: Purl.

Rep 1st to 6th rows for lace pat.

BACK

Cast on **44** (**58-72-86**) sts.

Work in garter st (knit every row), noting 1st row is WS until work from beg measures approx 1" [2.5 cm] and ending on a WS row.

1st row: (RS). K5. PM. K3. (Work 1st row of lace pat. K7) **2** (**3-4-5**) times. K3. PM. K5.

2nd row: K5. SM. P3. (P7. Work 2nd row of lace pat) **2** (**3-4-5**) times. P3. SM. K5.

3rd row: K5. SM. K3. (Work next row of lace pat. K7) **2** (**3-4-5**) times. K3. SM. K5.

4th row: K5. SM. P3. (P7. Work next row of lace pat) **2** (**3-4-5**) times. P3. SM. K5.

5th and 6th rows: As 3rd and 4th rows, working next row of lace pat in each row.

7th row: K5. SM. K3. (K7. Work Row 1 of lace pat) **2** (**3-4-5**) times. K3. PM. K5.

8th row: K5. SM. P3. (Work Row 2 of lace pat. P7) **2** (**3-4-5**) times. P3. SM. K5.

9th row: K5. SM. K3. (K7. Work next row of lace pat) **2** (**3-4-5**) times. K3. SM. K5.

10th row: K5. SM. P3. (Work next row of lace pat. P7) **2** (**3-4-5**) times. P3. SM. K5.

11th and 12th rows: As 9th and 10th rows, working next row of lace pat in each row.

Work in pat as established until work from beg measures **4½** (**5½-5½-7**)" [**11.5** (**14-14-18**) cm], ending on a WS row.

Buttonhole row: (RS). K1. K2tog. yo. K2. SM. K3. (Work 1st row of lace pat. K7) **2** (**3-4-5**) times. K3. SM. K2. yo. ssk. K1.

*Cont in pat as established until work from last Buttonhole Row measures **2½** (**3-3-3½**)" [**6.5** (**7.5-7.5-9**) cm].

Rep Buttonhole Row.

Rep from * **0** (**0-2-2**) times more. Cont in pat as established until work from beg measures approx **11** (**13½-17½-20**)" [**28** (**34.5-44.5-51**) cm], ending on a 6th or 12th row of lace pat. Place sts on st holder.

CHEST

Cast on **22** (**28-32-36**) sts.

Work in garter st (knit every row), noting 1st row is WS until work from beg measures approx 1" [2.5 cm] and ending on a WS row.

1st row: (RS). K5. PM. Knit to last 5 sts. PM. K5.

2nd row: K5. SM. Purl to marker. SM. K5.

Work even in pat as established until work from beg measures **5** (**6-9½-11**)" [**12.5** (**15-24-28**) cm], ending on a WS row.

Shape Front

1st row: (RS). K5. SM. ssk. Knit to 2 sts before marker. K2tog. SM. K5. **20** (**26-30-34**) sts.

2nd row: K5. SM. Purl to marker. SM. K5.

Rep last 2 rows **4** (**7-9-11**) times. 12 sts. Remove markers.

Next row: K4. ssk. K2tog. K4. 10 sts.

Next row: (WS). Knit. **Do not** fasten off.

COLLAR: 1st row: (RS). Cast on **6** (**8-6-8**) sts for buttonhole tab. Beg by working over sts just cast-on. Work in (K2. P2) ribbing across chest sts, continue in (K2. P2) ribbing across Back sts from st holder. **60** (**76-88-104**) sts.

2nd and 3rd rows: *K2. P2. Rep from * to end of row.

Last row forms (K2. P2) ribbing pat.

Buttonhole row: (WS). Work in (K2. P2) ribbing to last 6 sts. P2. K2tog. yo. P2.

Work in (K2. P2) ribbing for 8 rows.

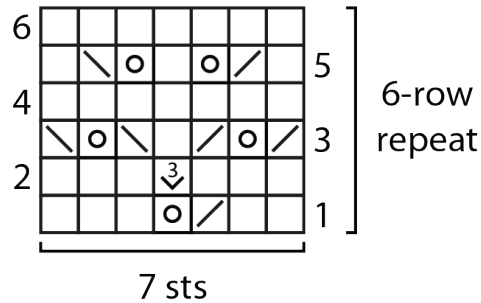
Buttonhole row: (RS). K2. P2togtbl. yo. Work in (K2. P2) ribbing to end of row.

Work in (K2. P2) ribbing for 3 rows more. Cast off in pat.

FINISHING

Fold Collar in half lengthwise to WS, matching up buttonholes. Sew cast-off edge to WS of first row of Collar. Sew around the buttonhole edges to join and strengthen them. Beg at Collar, sew Chest to Back until desired amount of space for leg remains between end of seam and first buttonhole. Sew buttons to correspond to buttonholes on Back. Weave in all loose ends.

Puppy Paw Lace



- ☐ k on RS, p on WS
- ☒ p on RS, k on WS
- ☐ ssk
- ☒ k2tog
- ☒ (p1, yo, p1) in same st
- ☒ yarn over

