

RED HEART IN A PINCH KNIT PILLOW



KNIT | SKILL LEVEL: INTERMEDIATE

### ABBREVIATIONS

- Approx** = Approximately
- Beg** = Beginning
- Cont** = Continue(ity)
- K** = Knit
- P** = Purl
- Pat** = Pattern
- Rep** = Repeat
- Rnd(s)** = Round(s)
- St(s)** = Stitch(es)
- Together** = Together

**Wrap sts** = (Wyif slip 7 sts just worked from right-hand needle back to left-hand needle. Wyib slip same 7 sts purlwise back to right-hand needle, pulling wrapped yarn to pinch sts tog) 3 times.

**Wyib** = With yarn in back of work

**Wyif** = With yarn in front of work

### MEASUREMENTS

Approx 12" x 18" [30.5 x 45.5 cm].

### GAUGE

14 sts and 18.5 rows = 4" [10 cm] in Pat.

### INSTRUCTIONS

#### Notes:

- Pat worked over multiple of 10 sts.
- Pillow is worked sideways and in the round.
- Work will stretch slightly to cover pillow.

Cast on 80 sts. Join for working in rnd, placing marker at first st.

**1st to 3rd set-up rnds:** \*K2. P3. Rep from \* to end of rnd.

Cont in Pat as follows:

**1st to 3rd rnds:** \*K2. P3. Rep from \* to end of rnd.

**4th rnd:** \*K2. P3. K2. Wrap sts. P3. Rep from \* to end of rnd.

**5th to 10th rnds:** \*K2. P3. Rep from \* to end of rnd.

**11th rnd:** K2. \*P3. K2. P3. K2. Wrap sts. Rep from \* to last 8 sts. P3. Working over next 7 sts (last 5 sts of 11th rnd and first 2 sts of 12th rnd), K2. P3. K2. Wrap sts.

### MATERIALS

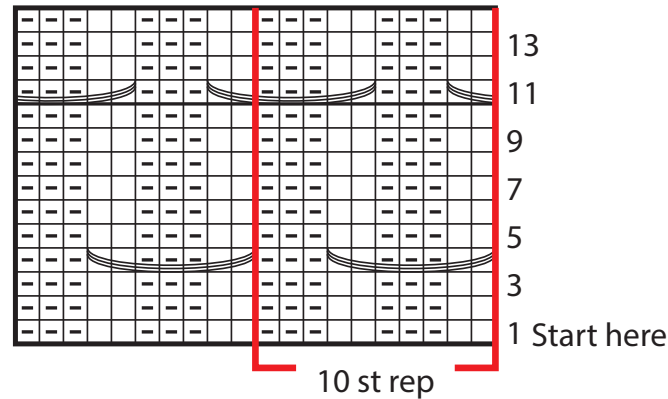
**Red Heart® Hygge™** (8 oz/227 g; 212 yds/194 m)

Sterling (8340) **2 balls or 292 yds/267 m**

Size U.S. 10½ (6.5 mm) circular knitting needle 24" [61 cm] long **or size needed to obtain gauge.** 12" x 18" [30.5 x 45.5 cm] pillow form. Tapestry needle. Stitch marker

## RED HEART IN A PINCH KNIT PILLOW

First 2 sts of 12th rnd complete.  
 Cont with 12th rnd as follows:  
**12th rnd:** P3. \*K2. P3. Rep from \* to end of rnd.  
**13th to 14th rnds:** \*K2. P3. Rep from \* to end of rnd.  
 Last 14 rnds form Pat.  
 Rep 1st to 14th rnds of Pat 4 times more, then rep 1st to 10th rnds once.  
 Cast off in Pat.



Key

□ = Knit

◻ = Purl

 = Wrap sts

### FINISHING

Fold work flat and sew cast on edge tog aligning Pat. Insert pillow form. Sew cast off edge tog aligning Pat. Taking one strand of yarn and tapestry needle, wrap yarn 3 times around each pair of knit ribs along seamed edges to pinch sts tog to finish edges in same style as Pat.

