



KNIT  
SKILL LEVEL  
EASY

Designed by Laura Bain



# Big Cables Pillow

*Choose any of the softly heathered shades of this super bulky yarn for a cable textured pillow. It will add hominess and style to modern or traditional décor.*

**GAUGE:** 7 sts = 4" (10 cm); 8 rows = 4" (10 cm) in cable pattern.

**CHECK YOUR GAUGE.** Use any size needles to obtain the gauge.



**RED HEART® Grande™**, Art. E826, available in 5.29 oz (150 g), 46 yd (42 m) balls

Pillow measures 18" (46 cm) square.

## SPECIAL ABBREVIATIONS

**WC (Work Cable):** Slip 2 sts onto cable needle and hold to front of work, knit the next 2 sts, knit the slipped sts from the cable needle.

## PILLOW SQUARES (Make 2)

Cast on 38 sts.

**Row 1 (right side):** P2, \*K4, P1; repeat from \* to last st, P1.

**Row 2 and all even rows:** K2, \*P4, K1; repeat from \* to last st, K1.

**Row 3:** Repeat Row 1.

**Row 5 (cable row):** P2, \*WC, P1; repeat from \* to last st, P1.

**Rows 7, 9, and 11:** Repeat Row 1.

**Row 13:** Repeat Row 5.

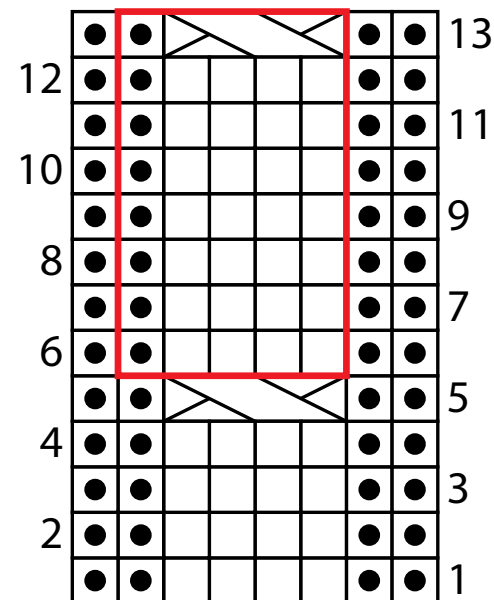
Repeat Rows 6 -13 until your work measures about 18" (46 cm), ending on Row 8. Bind off.

## FINISHING

Place two pillow squares wrong sides together. With crochet hook, sc around three edges of the pillow to seam. When you reach the fourth and final edge, insert the pillow form inside the pillow. Sc the final edge together. With yarn needle, weave in all loose ends.

## ABBREVIATIONS

**K** = knit; **mm** = millimeters; **P** = Purl; **sc** = single crochet; **st(s)** = stitch(es); **\*** = repeat whatever follows the \* or \*\* as indicated.



Key

☐ knit on RS, purl on WS

☒ purl on RS, knit on WS

 WC (work cable)

☐ repeat

SHOP KIT