



KNIT
SKILL LEVEL
EASY

Designed by Jodi Lewanda

What you will need:

RED HEART® Soft®: 2 balls each 9520 Seafoam **A** (for Seed Stitch pillow), 4545 Peri **B** (for Double Moss Stitch pillow), and 9983 Seaglass **C** (for Box Stitch pillow).

Susan Bates® Knitting Needles: 5mm [US 8]

18 x 18" [45.5 x 45.5 cm] pillow form, stitch markers, pins, six 1" [25 mm] buttons (6 buttons for each pillow, 18 buttons for all three), yarn needle.

GAUGE: 18 sts = 4" [10 cm]; 28 rows = 4" [10 cm] in Seed Stitch, unstretched. 18 sts = 4" [10 cm]; 26 rows = 4" [10 cm] in Double Moss Stitch, unstretched. 18 sts = 4" [10 cm]; 24 rows = 4" [10 cm] in Box Stitch, unstretched.

CHECK YOUR GAUGE. Use any size needles to obtain the gauge.



RED HEART® Soft®, Art. E728 available in solid color 5 oz (141 g), 256 yd (234 m), print 4 oz (113 g), 204 yd (187 m), and heather 4oz (113g), 212 yd (194m) balls

SHOP KIT



Beach House Knit Pillows

Knit pillows make a room feel more comfortable and inviting. Here are three different stitch patterns used to add style and texture to any living area. They are designed with buttons so that the knit covers can be removed for washing.

Each pillow cover is designed to fit an 18 x 18" [45.5 x 45.5 cm] pillow form.

Notes

1. Each Pillow cover is made from three pieces: Front, back half with button band, and back half with buttonhole band.
2. Work buttonholes over last 6 sts of indicated right side rows of "back half with buttonhole band", as follows: k1, k2tog, yarn over, k3.
3. Pillow cover is worked to a slightly smaller size than pillow form to produce a snug fit.
4. Pillow cover fronts and backs are interchangeable. If desired, one pattern stitch could be used for front of cover and a different pattern stitch for back halves.
5. Stockinette stitch (knit on right side, purl on wrong side) selvedge stitches are provided along side edges for ease in seaming.
6. Mark the right side of each piece to make it easier to keep track of rows.
7. Pieces can be worked by following written instructions or reading charts. Read right side rows of charts from right to left and wrong side rows from left to right.

SEED STITCH PILLOW COVER Front

With **A**, cast on 70 sts.

Set-up Row (wrong side): Purl.

Row 1 (right side): K1 (selvedge st), *k1, p1; repeat from * to last st, k1 (selvedge st).

Row 2: P1 (selvedge st), *p1, k1; repeat from * to last st, p1 (selvedge st).

Rows 3-112: Repeat Rows 1 and 2 for 55 more times.

Last Row (right side): Knit.

Bind off as if to purl.

BACK HALF WITH BUTTON BAND

With **A**, cast on 38 sts.

Set-up Row (wrong side): P1 (selvedge st), p31, place marker, k6 (for button band).

Row 1 (right side): K6, slip marker, k1, *p1, k1; repeat from * to last st, k1 (selvedge st)

Row 2: P1 (selvedge st), k1, *p1, k1; repeat from * to marker, slip marker, k6.

Rows 3-112: Repeat Rows 1 and 2 for 55 more times.

Last Row (right side): Knit.

Bind off as if to purl.

BACK HALF WITH BUTTONHOLE BAND

With **A**, cast on 38 sts.

Set-up Row (wrong side): K6 (for buttonhole band), place marker, p31, p1 (selvedge st).

Row 1 (right side): K1 (selvedge st), k1, *p1, k1; repeat from * to marker, slip marker, k6.

Row 2: K6, slip marker, k1, *p1, k1; repeat from * to last st, p1 (selvedge st).

Rows 3-10: Repeat Rows 1 and 2 for 4 more times.

Row 11 (buttonhole row): K2, *p1, k1; repeat from * to marker, slip marker, k1, k2tog, yarn over, k3.

Row 12: Repeat Row 2.

Rows 13-28: Repeat Rows 1 and 2 for 8 more times.

Rows 29-100: Repeat Rows 11-28 for 4 more times.

Rows 101-112: Repeat Rows 11-22.

Last Row (right side): Knit.

Bind off as if to purl.

continued...



2015 - 2018
WOMEN'S CHOICE AWARD®
AMERICA'S MOST RECOMMENDED
YARN BRAND



DOUBLE MOSS STITCH PILLOW COVER

Front

With **B**, cast on 70 sts.

Set-Up Row (wrong side): Purl.

Row 1 (right side): K1 (selvedge st), *k2, p2; repeat from * to last st, k1 (selvedge st).

Row 2: P1 (selvedge st), *k2, p2; repeat from * to last st, p1 (selvedge st).

Row 3: K1, *p2, k2; repeat from * to last st, k1.

Row 4: P1, *p2, k2; repeat from * to last st, p1.

Rows 5–104: Repeat Rows 1–4 for 25 more times.

Last Row (right side): Knit.

Bind off as if to purl.

BACK HALF WITH BUTTON BAND

With **B**, cast on 38 sts.

Set-up Row (wrong side): P1 (selvedge st), p31, place marker, k6 (for button band).

Row 1 (right side): K6, slip marker, p1, k2, *p2, k2; repeat from * to last st, k1 (selvedge st)

Row 2: P1 (selvedge st), p2, *k2, p2; repeat from * to 1 st before marker, k1, slip marker, k6.

Row 3: K6, slip marker, k1, p2, *k2, p2; repeat from * to last st, k1.

Row 4: P1, k2, *p2, k2; repeat from * to 1 st before marker, p1, slip marker, k6.

Rows 5–104: Repeat Rows 1–4 for 25 more times.

Last Row (right side): Knit.

Bind off as if to purl.

BACK HALF WITH BUTTONHOLE BAND

With **B**, cast on 38 sts.

Set-up Row (wrong side): K6 (for buttonhole band), place marker, p31, p1 (selvedge st).

Row 1 (right side): K1 (selvedge st), p2, *k2, p2; repeat from * to 1 st before marker, k1, slip marker, k6.

Row 2: K6, slip marker, p1, k2, *p2, k2; repeat from * to last st, p1 (selvedge st).

Row 3: K3, *p2, k2; repeat from * to 1 st before marker, p1, slip marker, k6.

Row 4: K6, slip marker, k1, *p2, k2; repeat from * to last 3 sts, p3.

Rows 5–12: Repeat Rows 1–4 twice.

Row 13 (buttonhole row): K1, p2, *k2, p2; repeat from * to 1 st before marker, k1, slip marker, k1, k2tog, yarn over, k3.

Rows 14–16: Repeat Rows 2–4.

Rows 17–28: Repeat Rows 1–4 for 3 more times.

Rows 29–92: Repeat Rows 13–28 for 4 more times.

Rows 93–104: Repeat Rows 1–4 for 3 more times.

Last Row (right side): Knit.

Bind off as if to purl.

BOX STITCH PILLOW COVER

Front

With **C**, cast on 70 sts.

Set-Up Row (wrong side): Purl.

Row 1 (right side): K1 (selvedge st), k4, *p4, k4; repeat from * to last st, k1 (selvedge st).

Row 2: P1 (selvedge st), p4, *k4, p4; repeat from * to last st, p1 (selvedge st).

Rows 3 and 4: Repeat Rows 1 and 2.

Row 5: Repeat Row 1.

Row 6: P1, k4, *p4, k4; repeat from * to last st, p1.

Row 7: K1, p4, *k4, p4; repeat from * to last st, k1.

Rows 8 and 9: Repeat Rows 6 and 7.

Row 10: Repeat Row 6.

Rows 11–90: Repeat Rows 1–10 for 8 more times.

Last Row (right side): Knit.

Bind off as if to purl.

BACK HALF WITH BUTTON BAND

With **C**, cast on 38 sts.

Set-up Row (wrong side): P1 (selvedge st), p31, place marker, k6 (for button band).

Row 1 (right side): K6, slip marker, k3, p4, *k4, p4; repeat from * to last st, k1 (selvedge st)

Row 2: P1 (selvedge st), k4, *p4, k4; repeat from * to 3 sts before marker, p3, slip marker, k6.

Rows 3 and 4: Repeat Rows 1 and 2.

Row 5: Repeat Row 1.

Row 6: P5, *k4, p4; repeat from * to 3 sts before marker, k3, slip marker, k6.

Row 7: K6, slip marker, p3, k4, *p4, k4; repeat from * to last st, k1.

Rows 8 and 9: Repeat Rows 6 and 7.

Row 10: Repeat Row 6.

Rows 11–90: Repeat Rows 1–10 for 8 more times.

Last Row (right side): Knit.

Bind off as if to purl.

BACK HALF WITH BUTTONHOLE BAND

With **C**, cast on 38 sts.

Set-up Row (wrong side): K6 (for buttonhole band), place marker, p31, p1 (selvedge st).

Row 1 (right side): K1 (selvedge st), k4, *p4, k4; repeat from * to 3 sts before marker, p3, slip marker, k6.

Row 2: K6, slip marker, k3, p4, *k4, p4; repeat from * to last st, p1 (selvedge st).

Rows 3 and 4: Repeat Rows 1 and 2.

Row 5: Repeat Row 1.

Row 6: K6, slip marker, p3, k4, *p4, k4; repeat from * to last st, p1.

Row 7: K1, p4, *k4, p4; repeat from * to 3 sts before marker, k3, slip marker, k6.

Row 8: Repeat Row 6.

Row 9 (first buttonhole row): K1, p4, *k4, p4; repeat from * to 3 sts before marker, k3, slip marker, k1, k2tog, yarn over, k3.

Row 10: Repeat Row 6.

Rows 11–90: Repeat Rows 1–10, only working a buttonhole (k1, k2tog, yarn over, k3) in 6-st buttonhole band on every 14th row following Row 9, for a total of 6 buttonholes.

Last Row (right side): Knit.

Bind off as if to purl.

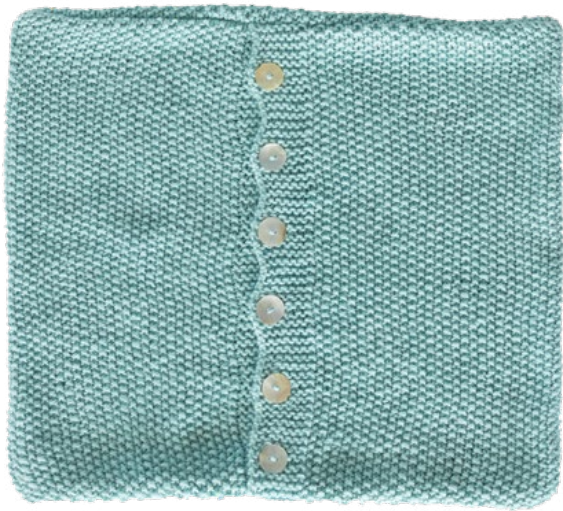
FINISHING (ALL COVERS)

Overlap back halves with buttonhole band piece on top, pin in place. Sew front and back together around all four sides. Sew buttons to button band, opposite buttonholes. Insert pillow form and button cover closed. Weave in ends.

ABBREVIATIONS

A, B, C = Color A, Color B, Color C etc; **k** = knit; **k2tog** = knit next 2 sts together; **p** = purl; **st(s)** = stitch(es); * = repeat whatever follows the * as indicated.

see next pages for additional photos and charts



DOUBLE MOSS STITCH PILLOW

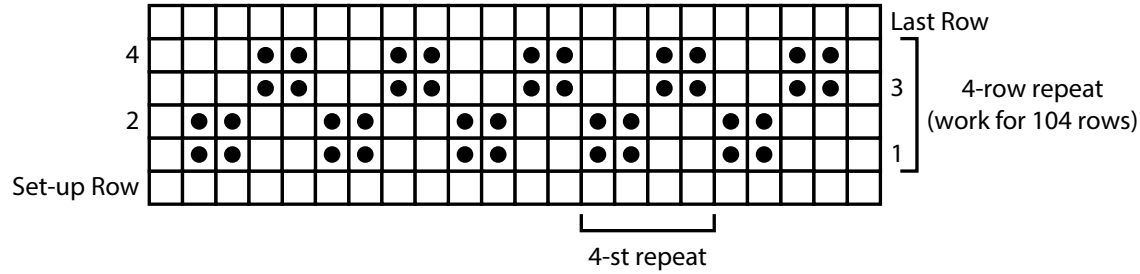


SEED STITCH PILLOW

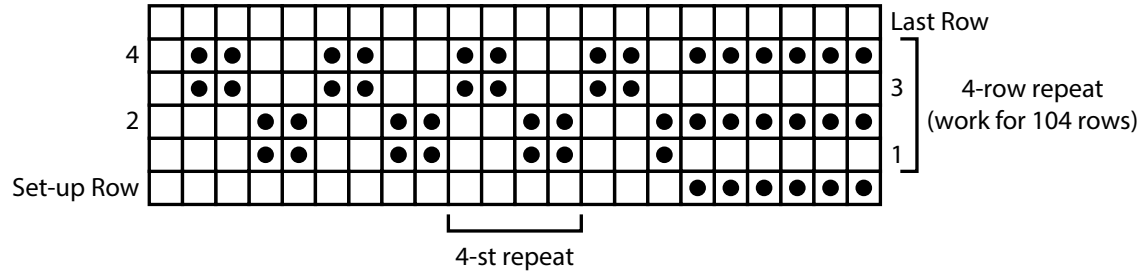


BOX STITCH PILLOW

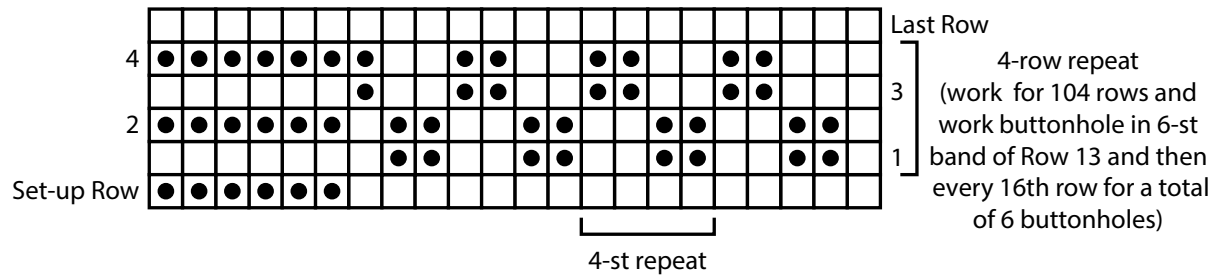
Double Moss Stitch pattern - FRONT



Double Moss Stitch pattern - BACK HALF WITH BUTTON BAND



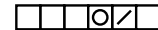
Double Moss Stitch pattern - BACK HALF WITH BUTTONHOLE BAND



KEY

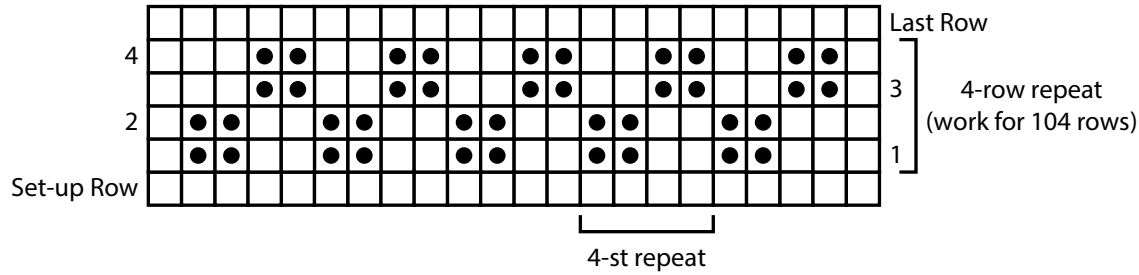
- knit on right side, purl on wrong side
- purl on right side, knit on wrong side
- yarn over
- k2tog (knit 2 stitches together)

Buttonhole
(work over 6-st buttonhole band of indicated rows)

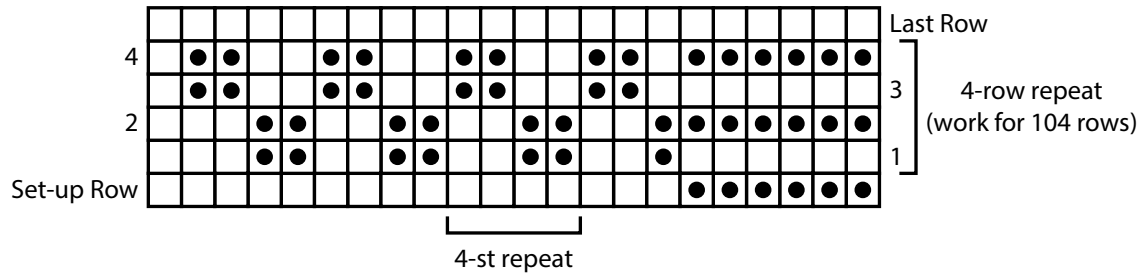




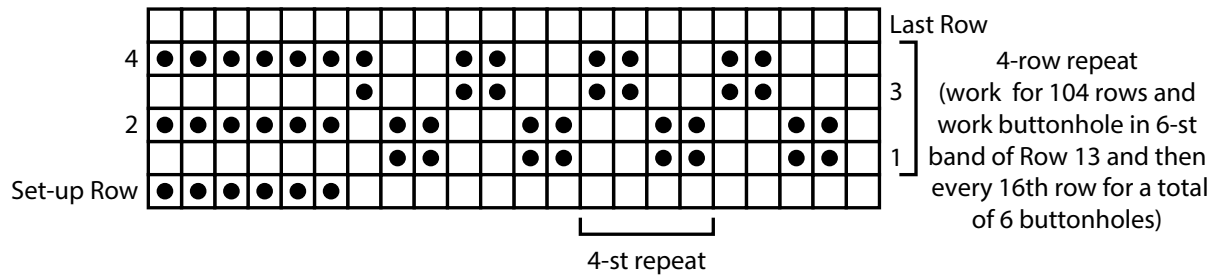
Double Moss Stitch pattern - FRONT



Double Moss Stitch pattern - BACK HALF WITH BUTTON BAND



Double Moss Stitch pattern - BACK HALF WITH BUTTONHOLE BAND



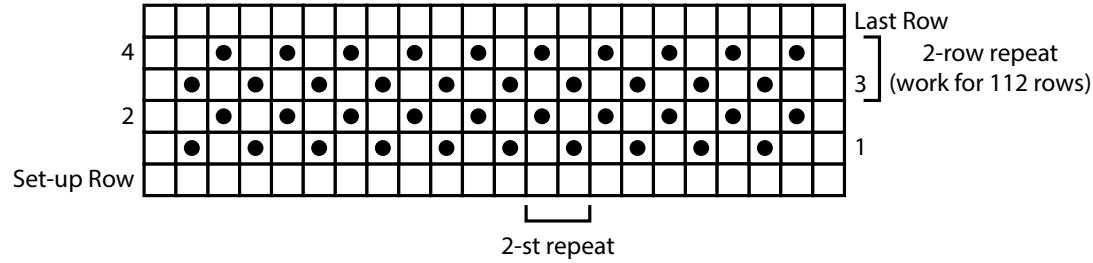
KEY

- knit on right side, purl on wrong side
- purl on right side, knit on wrong side
- yarn over
- k2tog (knit 2 stitches together)

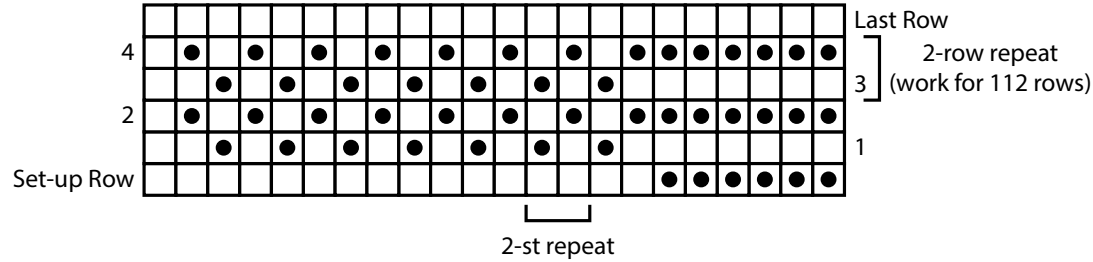
Buttonhole
(work over 6-st buttonhole band of indicated rows)



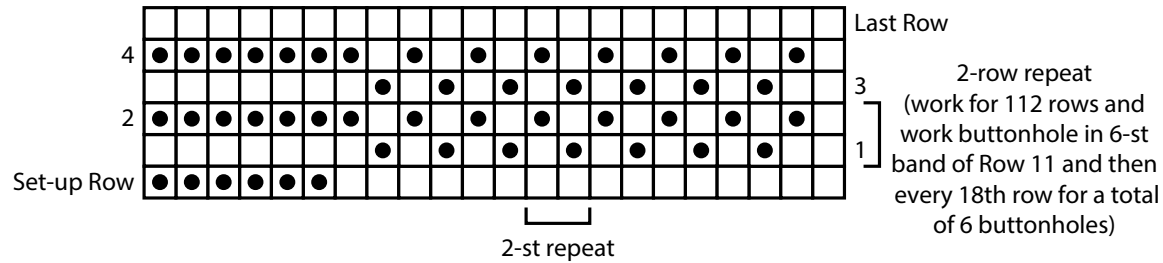
Seed Stitch pattern - FRONT



Seed Stitch pattern - BACK HALF WITH BUTTON BAND



Seed Stitch pattern - BACK HALF WITH BUTTONHOLE BAND

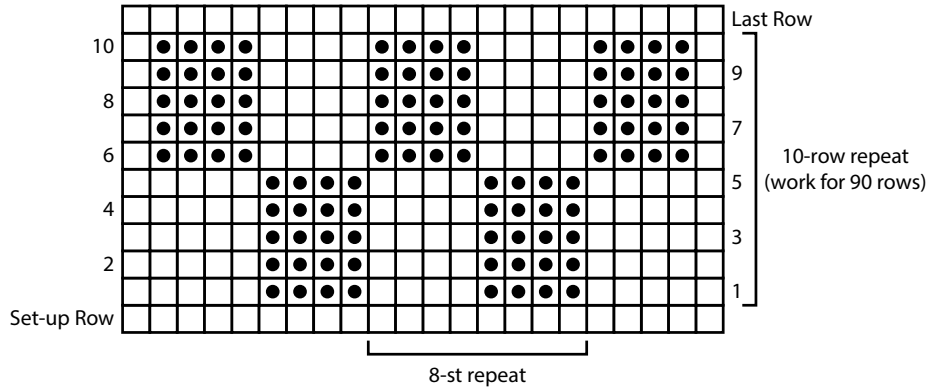


KEY

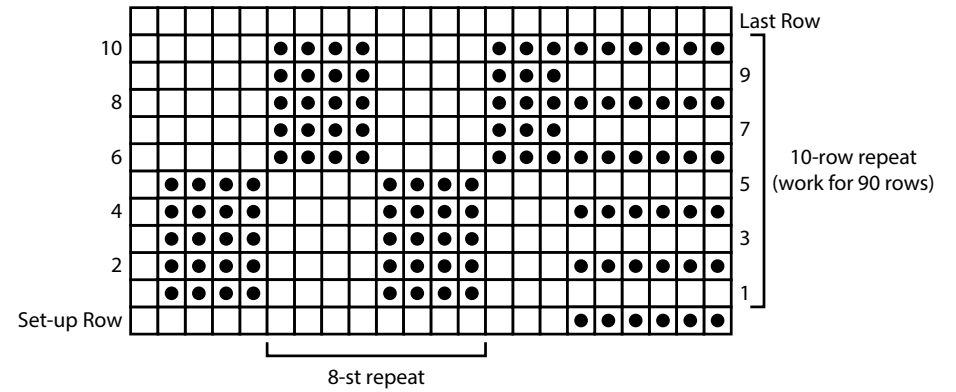
- knit on right side, purl on wrong side
- purl on right side, knit on wrong side
- yarn over
- k2tog (knit 2 stitches together)

Buttonhole
(work over 6-st buttonhole band of indicated rows)

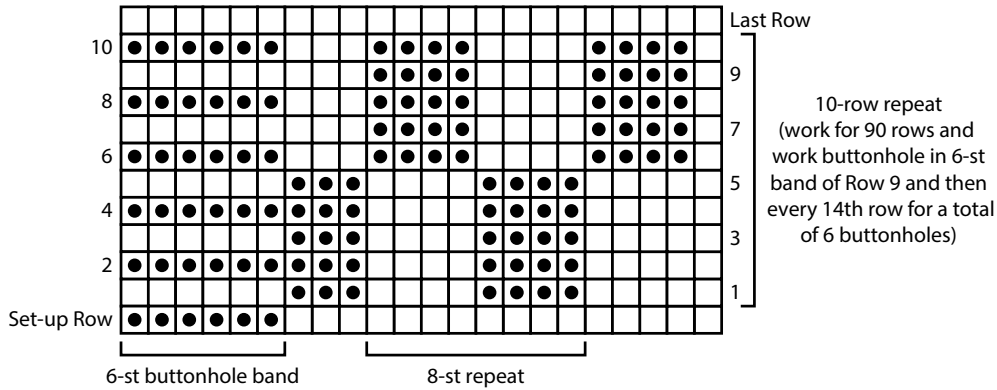
Box Stitch pattern - FRONT



Box Stitch pattern - BACK HALF WITH BUTTON BAND



Box Stitch pattern - BACK HALF WITH BUTTONHOLE BAND



KEY

- knit on right side, purl on wrong side
- purl on right side, knit on wrong side
- yarn over
- k2tog (knit 2 stitches together)

Buttonhole
(work over 6-st buttonhole
band of indicated rows)

