



# stitch Nation

BY DEBBIE STOLLER™



## cabled ottoman cover

*Purchase an inexpensive ottoman cube and knit this gorgeous Aran knit cover for it. It looks great in white, but would look equally as attractive in whatever accent color you'd like!*

**SN0147**



Designed by Julie Farmer.

Cover fits a 15" x 15" x 15" Ottoman.

STITCH NATION by Debbie Stoller™ "Full o' Sheep™": 8 balls 2205 Little Lamb.

Knitting Needles: 9mm [US 13].  
Cable needle, yarn needle, stitch markers (4).

**GAUGE:** 12 sts = 4"; 14 rows = 4" in St st holding 2 strands of yarn tog. **CHECK YOUR GAUGE.** Use any size needles to obtain the gauge given.

### NOTE

Work with 2 strands of yarn held together throughout pattern.

### OTTOMAN COVER

#### Side (Make 4)

With 2 strands of yarn held together, cast on 44 sts.  
Work in K2, p2 rib for 3", end by working a wrong side row.

#### Setup Cable Patterns

**Next Row (Right Side):** K2, place marker, work Row 1 of Chart A over next 12 sts, place marker work Row 1 of Chart B over next 16 sts, place marker, work Row 1 of Chart A over next 12 sts, place marker k2.

Keeping first and last 2 sts in St st, and sts between markers in cable patterns as established, work until piece measures 15" from beginning, end by working a wrong side row. Bind off.

#### Top

With 2 strands of yarn held together, cast on 44 sts.  
Purl 1 row. Setup Cable Patterns and work same as for Side, omitting ribbing.

### FINISHING

Sew Side pieces together. Sew top to sides.



Stitch Nation by Debbie Stoller™  
"Full o' Sheep™" available in 3.5 oz (100g),  
155 yd (142m) balls.

**ABBREVIATIONS:** K = knit; mm = millimeters; p = purl; St st = Stockinette stitch (Knit on right side rows; Purl on wrong side rows.); st(s) = stitch (es).



For more ideas & inspiration -

[www.redheart.com](http://www.redheart.com)

[www.stitchnationyarn.com](http://www.stitchnationyarn.com)

[www.coatsandclark.com](http://www.coatsandclark.com)



# stitch Nation

BY DEBBIE STOLLER™

CHART A

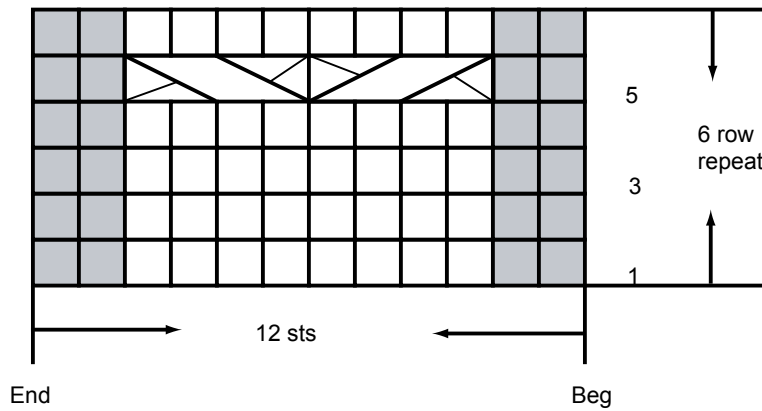
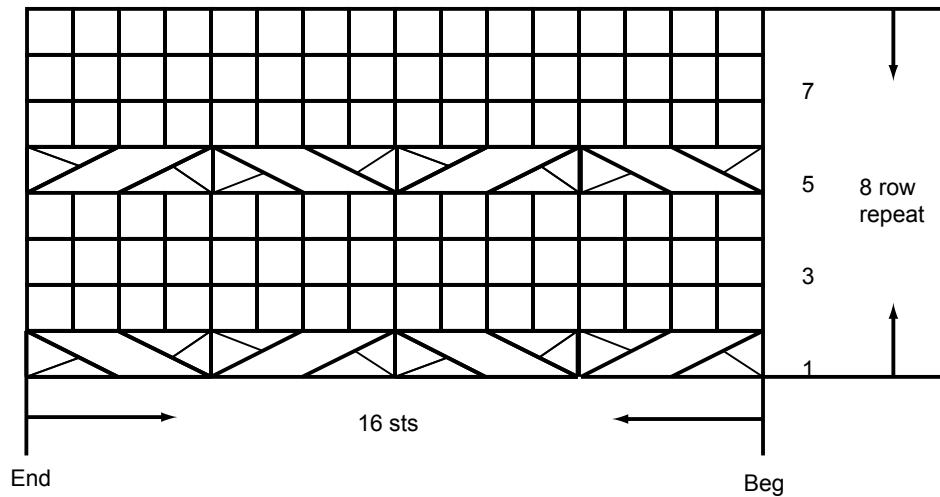





CHART B




STITCH KEY

 K on right side, p on wrong side.

 P on right side, k on wrong side.

 **2/2 RC** = Slip next 2 sts to cable needle, hold to back, k2, k2 from cable needle.

 **2/2 LC** = Slip next 2 sts to cable needle, hold to front, k2, k2 from cable needle.