



Striped Christmas Stocking

Stocking is 18" long.

RED HEART® "Super Saver®": **Version 1** - 1 skein each: 368 Paddy Green **A**, 316 Soft White **B** and 319 Cherry Red **C**. **Version 2** - 1 skein each: 387 Soft Navy **A**, 332 Ranch Red **B**, 316 Soft White **C** and 633 Dark Sage **D**

Double Pointed Knitting Needles: One set (4) 5mm [US 8].
Crochet Hook: 4mm [US G-6].
Yarn needle, stitch marker.

GAUGE: 18 sts = 4"; 24 rows = 4" in Stockinette stitch.
CHECK YOUR GAUGE. Use any size needles to obtain the gauge.

STRIPE PATTERN

Version 1 (3 colors): 4 rnds **A**, 4 rnds **B**, 4 rnds **C**.
Version 2 (4 colors): 3 rnds **A**, 3 rnds **B**, 3 rnds **C**, 3 rnds **D**.

STOCKING

With **A**, cast on 54 sts, dividing sts evenly over 3 dpns. Join, pm for beginning of rnd, being careful not to twist sts.

Begin Stripe Pattern

Working in St st (knit every rnd), repeat Stripe Pattern for desired color version for 60 rnds. Cut all colors except **A**.

Divide for Heel

Slip first 13 sts from first needle, and last 12 sts from last needle of rnd onto a free needle—25 sts. Divide remaining 29 sts onto 2 needles for instep.

Heel

25 heel sts are now worked back and forth in rows as follows: With Right Side facing, attach **A** and work 14 rows in St st, ending with a Wrong Side row.

Shape Heel

Row 1 (right side): K16, k2tog, k1; turn.

Row 2: Slip 1 pwise, p8, p2tog, p1; turn.

Row 3: Slip 1 kwise, k9, k2tog, k1; turn.

Row 4: Slip 1 pwise, p10, p2tog, p1; turn.

Row 5: Slip 1 kwise, k11, k2tog, k1; turn.

Row 6: Slip 1 pwise, p12, p2tog, p1; turn.

Row 7: Slip 1 kwise, k13, k2tog, k1; turn.

Row 8: Slip 1 pwise p14, p2tog, p1; turn.

Row 9: K across remaining 17 sts. Cut yarn.

Divide for Gusset

With same needle, pick up and k 8 sts along edge of heel flap; with second needle, k across 29 instep sts; with third needle pick up and k 8 sts along other edge of heel flap, then with same needle, k 8 sts from first needle. Needle 1 has 17 sts, needle 2 has 29 sts, needle 3 has 16 sts—62 sts.

Shape Foot

Join, pm for beginning of rnd being careful not to twist sts, and keeping continuity of stripe pattern, shape foot as follow:

Rnd 1 (dec): Needle 1: k15, k2tog; **Needle 2:** k2tog, k25, k2tog; **Needle 3:** k2tog, k14.

Rnd 2: K even around.

Rnd 3 (dec): Needle 1: k to last 2 sts, k2tog; **Needle 2:** k27; **Needle 3:** k2tog, k to end.

Rep rnds 2 and 3 once more. Needle 1 has 14 sts, needle 2 has 27 sts, needle 3 has 13 sts—54 sts.

Work even for 27 rnds. Cut all colors except **A**.



STRIPED CHRISTMAS STOCKING | KNIT

Toe

Rnd 1: With **A**, k 1 rnd even in St st.

Rnd 2 (dec): Needle 1: k across to last 2 sts, k2tog,

Needle 2: k2tog, k across to last 2 sts, k2tog; **Needle**

3: k2 tog, k to end. Repeat Rnds 1 and 2, 7 times more.

Needle 1 has 7 sts, needle 2 has 13 sts, needle 3 has 6 sts–26sts. With needle 3, k across needle 1. 13 sts now on 2 needles. Cut **A** leaving 24" tail.

Cuff

Turn stocking inside out. With wrong side of stocking facing, beginning at center back with **A**, pick up and k57 sts evenly spaced around top of stocking, dividing sts evenly over 3 dpns.

Beginning with a knit rnd, work in Garter st (knit 1 rnd, purl 1 rnd) for 5 rnds.

Begin Charted Pattern

Notes:

For both versions, use Soft White for color **B**. Pattern can be worked following written instructions or reading chart. Read all rows of chart from right to left.

Rnd 1: With **A**, k4; *with **B**, k1; with **A**, k5; repeat from * to last 5 sts, with **B**, k1; with **A**, k4.

Rnd 2: With **A**, k3; *with **B**, k3; with **A**, k3; repeat from * around.

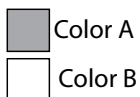
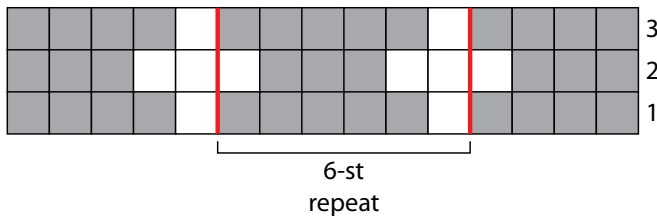
Rnd 3: Repeat Rnd 1. Cut **B**.

Rnds 4–13: With **A**, knit.

Rows 14–16: Repeat Rnds 1–3. Cut **B**.

Beginning with a knit rnd, work in Garter st for 3 rnds.

Bind off as if to purl. Turn stocking right side out.



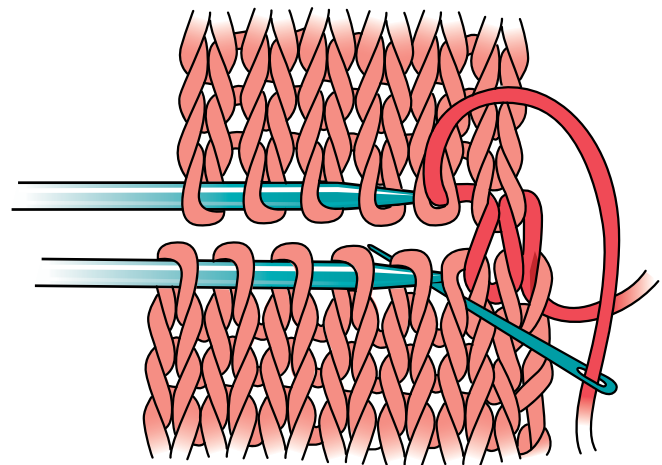
FINISHING

Graft toe sts together. Fold cuff over stocking. With right side facing and crochet hook, attach **B** at back; sl st in each st around; ch 12 for hanging loop, sl st to first sl st. Fasten off. Weave in yarn ends.

GRAFTING

1. Insert the yarn needle as if to purl in the first stitch of the front needle. Pull the yarn through, leaving the stitch on the needle.
2. Insert the yarn needle as if to knit into the first stitch of the back needle. Pull the yarn through, leaving the stitch on the needle.
3. Insert the yarn needle as if to knit in the first stitch of the front needle (the same stitch as before) and slide this stitch off the needle. Insert the yarn needle into the next stitch on the front needle as if to purl, but leave the stitch on the needle.
4. Insert the yarn needle as if to purl in the next stitch on the back needle, and slide this stitch off the needle. Insert the yarn needle in next stitch on back needle as if to knit. Pull the yarn through, but leave this stitch on the needle.

Continue repeating steps 3 and 4 until all stitches are grafted, pulling carefully as you work. When last stitch is worked, weave in remaining end.



RED HEART® “Super Saver®”:

Art. E300 available in Solid 7 oz (198 g), 364 yd (333 m); Multi, Fleck and Print 5 oz (141 g), 244 yd (223 m) skeins.

ABBREVIATIONS: **A B C D** = color A, B C, D; **ch** = chain; **dec** = decrease; **dpn(s)** = double pointed needle(s); **k** = knit; **kwise** = knitwise; **mm** = millimeters; **p** = purl; **pm** = place marker; **pwis** = purlwise; **rnd(s)** = round(s); **st(s)** = stitch(es); **St st** = Stockinette st; **[]** = work directions in brackets the number of times specified; * or ** = repeat whatever follows the * or ** as indicated.