



KNIT
SKILL LEVEL
EASY



Designed by Cathy Payson

What you will need:

RED HEART® With Love®: 1 skein each 1001 White **A**, and 1909 Holly Berry **B**

Susan Bates® Knitting
Needles: 5.5mm [US 9]

Yarn needle

GAUGE: 14 sts = 4" [10 cm];
22 rows = 4" [10 cm] in
Stockinette stitch (knit on
right side, purl on wrong
side). **CHECK YOUR GAUGE.**
**Use any size needles to
obtain the gauge.**



RED HEART® With Love®, Art. E400
available in solid
color 7oz (198g), 370 yd
(338m) and multicolor 5oz
(141g), 230 yd (211m) skeins

Maple Leaf Cup Cozy

Show your Canadian pride with a cup cozy for your hot drinks. Leaf motif is knit right into your knitting following the charted design.

Cup cozy measures about 7" [18 cm] circumference and 4" [10 cm] tall.

Special Stitch

M1 (make 1 - increase) = Lift strand between needles to left-hand needle and knit strand through the back loop, twisting it to prevent a hole.

Notes

1. Cozy is worked back and forth in rows.
2. Yarn color is changed to create maple leaf pattern.
3. Maple leaf pattern is worked in Stockinette stitch over center 11 stitches. Stitches on each side of maple leaf pattern are worked in 2x2 Rib.
4. Entire cozy can be worked by following written instructions or reading chart. Read right side rows of chart from right to left and wrong side rows from left to right.

COZY

With **A**, cast on 34 sts.

Row 1 (wrong side): P2, *k2, p2; repeat from * to end of row.

Change to **B**.

Row 2: With **B**, [k2, p2] 3 times, M1, k10, [p2, k2] 3 times - 35 sts.

Row 3: With **B**, [p2, k2] 3 times, p11, [k2, p2] 3 times.

Row 4: With **B**, [k2, p2] 3 times, k5; with **A**, k1; with **B**, k5, [p2, k2] 3 times.

Row 5: With **B**, [p2, k2] 3 times, p5; with **A**, p1; with **B**, p5, [k2, p2] 3 times.

Row 6: Repeat Row 4.

Row 7: With **B**, [p2, k2] 3 times, p4; with **A**, p3; with **B**, p4, [k2, p2] 3 times.

Row 8: With **B**, [k2, p2] 3 times, k2; with **A**, k7; with **B**, k2, [p2, k2] 3 times.

Row 9: With **B**, [p2, k2] 3 times, p2; with **A**, p7; with **B**, p2, [k2, p2] 3 times.

Row 10: With **B**, [k2, p2] 3 times, k3; with **A**, k5; with **B**, k3, [p2, k2] 3 times.

Row 11: Repeat Row 9.



Row 12: With **B**, [k2, p2] 3 times, k1; with **A**, k9; with **B**, k1, [p2, k2] 3 times.

Row 13: With **B**, [p2, k2] 3 times, p1; with **A**, p9; with **B**, p1, [k2, p2] 3 times.

Row 14: With **B**, [k2, p2] 3 times, k1; with **A**, k1; with **B**, k2; with **A**, k3; with **B**, k2; with **A**, k1; with **B**, k1, [p2, k2] 3 times.

Row 15: Repeat Row 7.

Row 16: With **B**, [k2, p2] 3 times, k4; with **A**, k3; with **B**, k4, [p2, k2] 3 times.

Row 17: Repeat Row 5.

Row 18: With **B**, [k2, p2] 3 times, k11, [p2, k2] 3 times.

Row 19: Repeat Row 3.

Cut **B**.

Row 20: With **A**, [k2, p2] 3 times, k2tog, k1, *p2, k2; repeat from * to end of row - 34 sts.

Row 21: With **A**, p2, *k2, p2; repeat from * to end of row.

Bind off and cut yarn leaving a long tail for sewing.

See next page for chart and alternate photo



2015 - 2017
WOMEN'S CHOICE AWARD®
AMERICA'S MOST RECOMMENDED
YARN BRAND

SHOP KIT

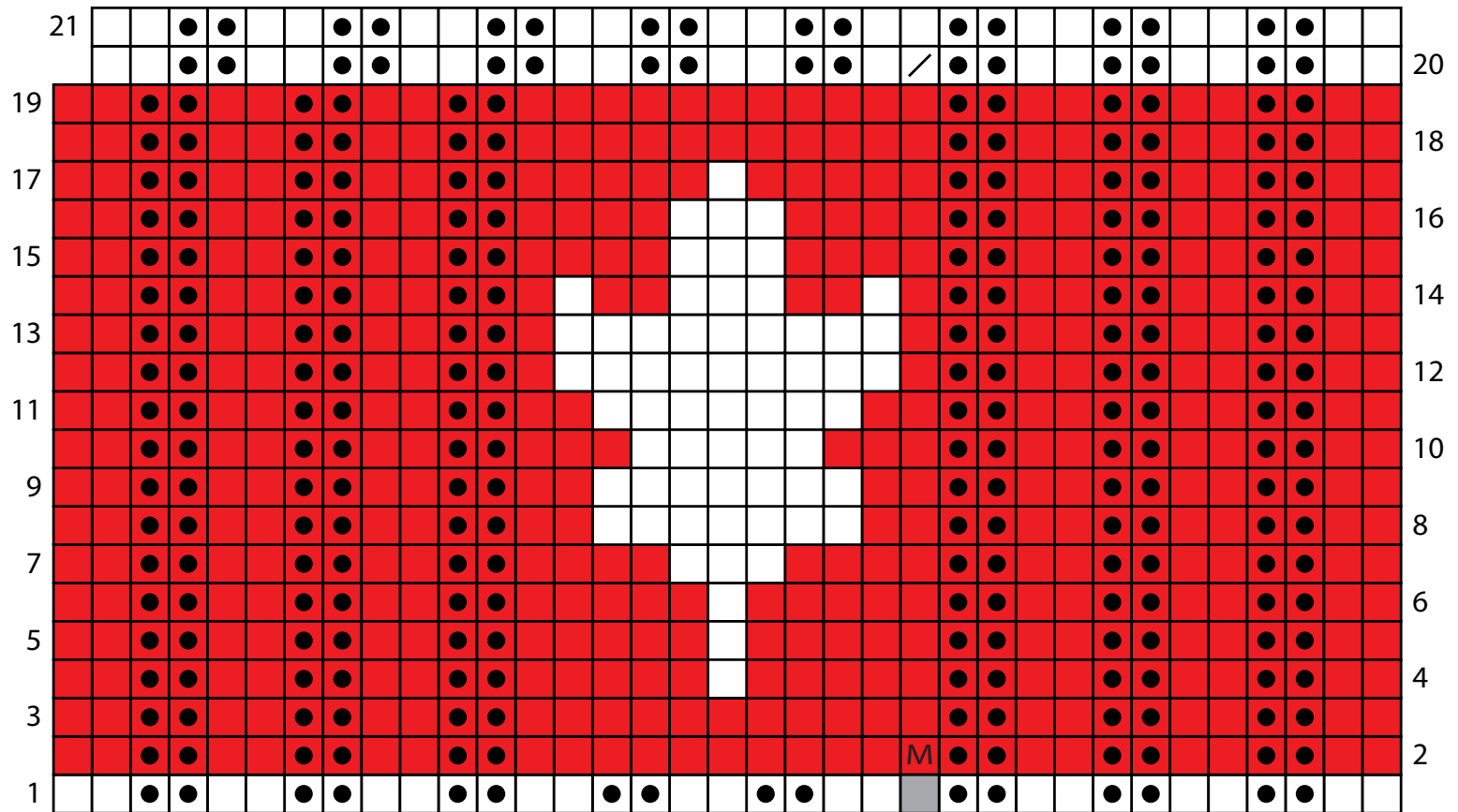


FINISHING

Sew side edges of piece together for back seam. Weave in ends.

ABBREVIATIONS

k = knit; **k2tog** = knit 2 stitches together; **p** = purl; **st(s)** = stitch(es); **[]** = work directions in brackets the number of times specified; * = repeat whatever follows the * as indicated.



Key	
	With A, knit on RS, purl on WS
	With A, purl on RS, knit on WS
	With B, knit on RS, purl on WS
	With B, purl on RS, knit on WS
	With B, make 1
	no stitch
	With A, k2tog (knit 2 stitches together)