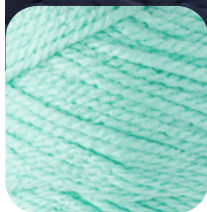


Yarnspirations™



MAKE THIS

**DO IT YOUR WAY KNIT
BLANKET**



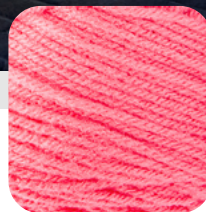
Minty



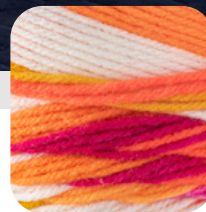
Bright
Yellow



Spring
Green



Persimmon



Citrus
Twist



Fridgid



KNIT | SKILL LEVEL: **EASY**





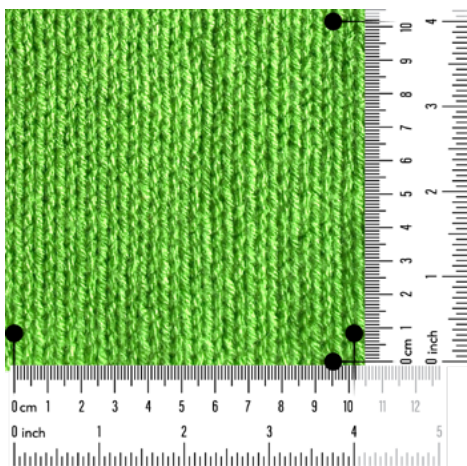
MAKE THIS

WHAT YOU'LL NEED



GAUGE

17 sts and 23 rows = 4" [10 cm] with larger needles in stocking st.



YARN

Red Heart® Super Saver®
(7 oz/198 g; 364 yds/333 m)

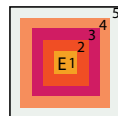
COLORS

Quantity

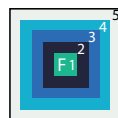
Red Heart® Super Saver®
(7 oz/198 g; 364 yds/333 m)

- **Contrast A** Minty (0520)
2 balls or 410 yds/450 m
- **Contrast B** Bright Yellow (0324)
2 balls or 390 yds/430 m
- **Contrast C** Spring Green (0672)
2 balls or 445 yds/490 m
- **Contrast D** Persimmon (0220)
2 balls or 415 yds/456 m

Red Heart® All In One™ Granny Square™
(8.8 oz/250 g; 417 yds/381 m)



- **Contrast E** Citrus Twist (2002)
1 ball or 390 yds/430 m



- **Contrast F** Fridgid (2004)
1 ball or 405 yds/445 m

TOOLS

- Size U.S. 8 (5 mm) Susan Bates® knitting needles **or size needed to obtain gauge.**
- Two size U.S. 7 (4.5 mm) Susan Bates® circular knitting needles 36" [91.5 cm] long **or size needed to obtain gauge.**
- Susan Bates® yarn needle.
- Tape measure.



MAKE THIS

ABBREVIATIONS	
Approx =	Rem = Remaining
Approximately	Rep = Repeat
Beg = Beginning	RS = Right side
Cont = Continue(ity)	St(s) = Stitch(es)
K = Knit	Tog = Together
P = Purl	WS = Wrong side
Pat = Pattern	

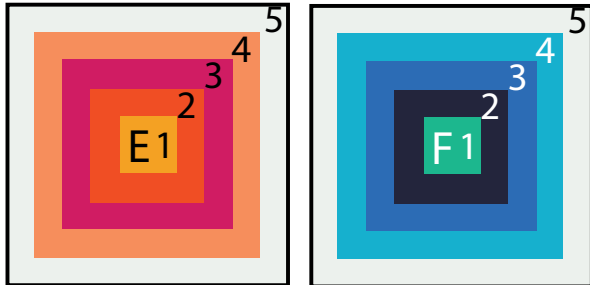
INSTRUCTIONS

USING THIS GUIDE

Click on the underlined words throughout the pattern to access our library of helpful tools.

NOTES

- Separate colors of Red Heart® All In One™ Granny Square™ for duplicate stitch embroidery. Each color will have an individual number: E-1, E-2, E-3, E-4, E-5 and F-1, F-2, F-3, F-4, F-5.



- Colors E-5 and F-5 (Soft White) will be used for dividing garter ridges between blocks and for 3-needle joining strips.
- Blanket is knit in Strips alternating textured and stocking st Blocks.
- Plain stocking st Blocks will be used as a background for duplicate stitch embroidery.

MEASUREMENT

Approx 49" [124.5 cm] square.





MAKE THIS

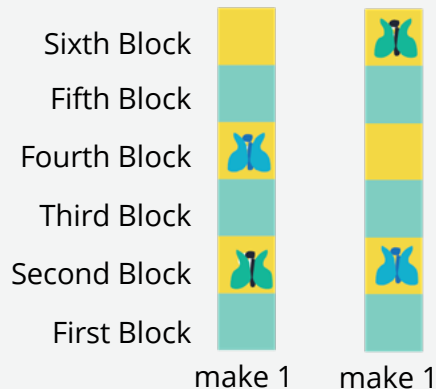
INSTRUCTIONS

BLANKET

STRIP 1 (make 2)

ABBREVIATIONS

Approx =	Approximately	Rem =	Remaining
Beg =	Beginning	Rep =	Repeat
Cont =	Continue(ity)	RS =	Right side
K =	Knit	St(s) =	Stitch(es)
P =	Purl	Tog =	Together
Pat =	Pattern	WS =	Wrong side



First Block: With A, cast on 33 sts.

1st row: (RS). K1. *P1. K1. Rep from * to end of row.

2nd and 3rd rows: K1. *K1. P1 Rep from * to last 2 sts. K2.

4th row: As 1st row.

Rep last 4 rows of Moss St Pat for 8" [20.5 cm], ending on a 2nd or 4th row.

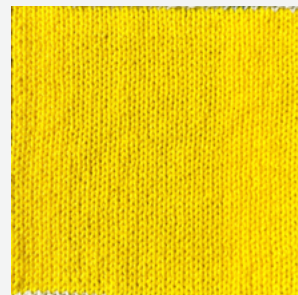


With E-5 or F-5 (Soft White), knit 2 rows (garter edge).

Second Block: 1st row: With B, knit.

2nd row: K1. Purl to last st. K1.

Rep last 2 rows of stocking st with 1 st of garter edge at each side for 8" [20.5 cm], ending on a WS row.

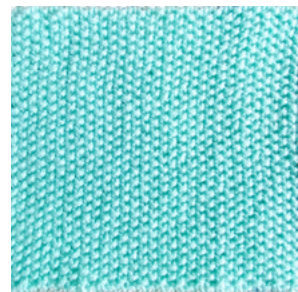


With E-5 or F-5 (Soft White), knit 2 rows (garter edge).

Third Block: 1st row: (RS). With A, knit.

2nd row: K1. *P1. K1. Rep from * to end of row.

Rep last row of Seed St Pat for 8" [20.5 cm], ending on a WS row.



With E-5 or F-5 (Soft White), knit 2 rows (garter edge).



MAKE THIS

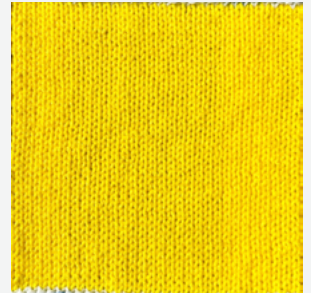
INSTRUCTIONS

ABBREVIATIONS

Approx =	Rem = Remaining
Approximately	Rep = Repeat
Beg = Beginning	RS = Right side
Cont = Continue(ity)	St(s) = Stitch(es)
K = Knit	Tog = Together
P = Purl	WS = Wrong side
Pat = Pattern	

Fourth Block: Work as given for Second Block.

With E-5 or F-5 (Soft White), knit 2 rows (garter edge).



Fifth Block: 1st row: (RS). With A, knit.

2nd row: K3. *P3. K5. Rep from * to last 6 sts. P3. K3.

3rd row: K1. P2. *K3. P5. Rep from * to last 6 sts. K3. P2. K1

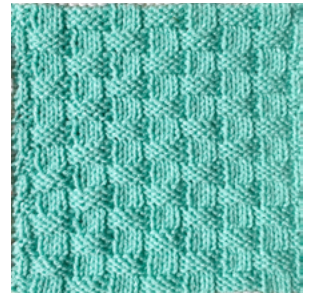
4th row: As 2nd row.

5th row: Knit.

6th row: K1. P1. *K5. P3. Rep from * to last 7 sts. K5. P1. K1.

7th row: K2. *P5. K3. Rep from * to last st. P5. K2.

8th row: As 6th row.



Rep last 8 rows of Basket Weave Pat for approx 8" [20.5 cm], ending on 4th or 8th row.

With E-5 or F-5 (Soft White), knit 2 rows (garter edge).

Sixth Block: Work as given for Second Block.

With B, cast off.





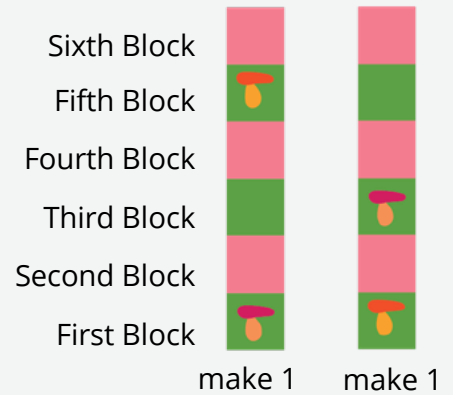
MAKE THIS

INSTRUCTIONS

STRIP 2 (make 2).

ABBREVIATIONS

Approx =	Approximately	Rem =	Remaining
Beg =	Beginning	Rep =	Repeat
Cont =	Continue(ity)	RS =	Right side
K =	Knit	St(s) =	Stitch(es)
P =	Purl	Tog =	Together
Pat =	Pattern	WS =	Wrong side



First Block: With C, cast on 33 sts.

1st row: With C, knit.

2nd row: K1. Purl to last st. K1.

Rep last 2 rows of stocking st with 1 st of garter edge at each side for 8" [20.5 cm], ending on a WS row.

With E-5 or F-5 (Soft White), knit 2 rows (garter edge).



Second Block: 1st row: (RS). With D, knit.

2nd row: K1. *P1. K1. Rep from * to end of row.

Rep last row of Seed St Pat for 8" [20.5 cm], ending on a WS row.

With E-5 or F-5 (Soft White), knit 2 rows (garter edge).



Third Block: 1st row: With C, knit.

2nd row: K1. Purl to last st. K1.

Rep last 2 rows of stocking st with 1 st of garter edge at each side for 8" [20.5 cm], ending on a WS row.

With E-5 or F-5 (Soft White), knit 2 rows (garter edge).





MAKE THIS

INSTRUCTIONS

ABBREVIATIONS

Approx =	Approximately	Rem =	Remaining
Beg =	Beginning	Rep =	Repeat
Cont =	Continue(ity)	RS =	Right side
K =	Knit	St(s) =	Stitch(es)
P =	Purl	Tog =	Together
Pat =	Pattern	WS =	Wrong side

Fourth Block: 1st row: (RS). With D, knit.
2nd row: K3. *P3. K5. Rep from * to last 7 sts. P3. K3.
3rd row: K1. P2. *K3. P5. Rep from * to last 5 sts. K3. P2. K1
4th row: As 2nd row.
5th row: Knit.
6th row: K1. P1. *K5. P3. Rep from * to last 7 sts. K5. P1. K1.
7th row: K2. *P5. K3. Rep from * to last st. P5. K2.
8th row: As 6th row.
 Rep last 8 rows of Basket Weave Pat for approx 8" [20.5 cm], ending on 4th or 8th row.



With E-5 or F-5 (Soft White), knit 2 rows (garter edge).

Fifth Block: With C, as Third Block.
 With E-5 or F-5 (Soft White), knit 2 rows (garter edge).



Sixth Block: 1st row: (RS). With D, knit.
2nd and 3rd rows: K1. *K1. P1 Rep from * to last 2 sts. K2.
4th and 5th. rows: K1. *P1. K1. Rep from * to end of row.
 Rep last 4 rows of Moss Stitch Pat for 8" [20.5 cm], ending on WS row.
 With D, cast off in pat.





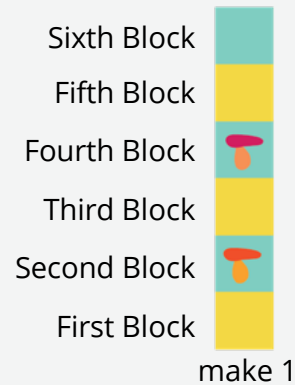
MAKE THIS

INSTRUCTIONS

ABBREVIATIONS

Approx =	Approximately	Rem =	Remaining
Beg =	Beginning	Rep =	Repeat
Cont =	Continue(ity)	RS =	Right side
K =	Knit	St(s) =	Stitch(es)
P =	Purl	Tog =	Together
Pat =	Pattern	WS =	Wrong side

STRIP 3 (make 1)



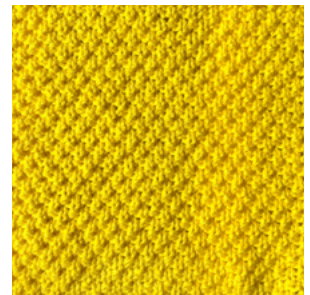
First Block: With B, cast on 33 sts.

1st row: (RS). K1. *P1. K1. Rep from * to end of row.

2nd and 3rd rows: K1. *K1. P1 Rep from * to last 2 sts. K2.

4th row: As 1st row.

Rep last 4 rows of Moss St Pat for 8" [20.5 cm], ending on a 2nd or 4th row.

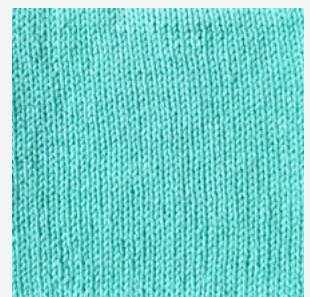


With E-5 or F-5 (Soft White), knit 2 rows (garter edge).

Second Block: 1st row: With A, knit.

2nd row: K1. Purl to last st. K1.

Rep last 2 rows of stocking st with 1 st of garter edge at each side for 8" [20.5 cm], ending on a WS row.

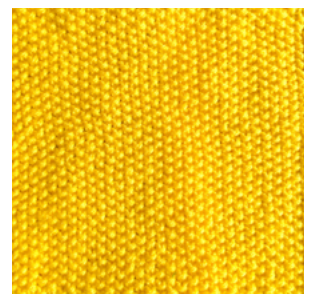


With E-5 or F-5 (Soft White), knit 2 rows (garter edge).

Third Block: 1st row: (RS). With B, knit.

2nd row: K1. *P1. K1. Rep from * to end of row.

Rep last row of Seed St Pat for 8" [20.5 cm], ending on a WS row.



With E-5 or F-5 (Soft White), knit 2 rows (garter edge).



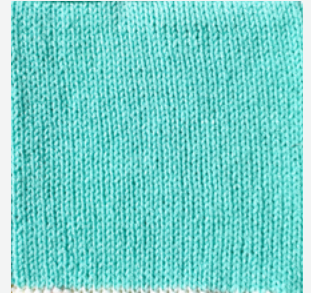
MAKE THIS

INSTRUCTIONS

ABBREVIATIONS

Approx =	Approximately	Rem =	Remaining
Beg =	Beginning	Rep =	Repeat
Cont =	Continue(ity)	RS =	Right side
K =	Knit	St(s) =	Stitch(es)
P =	Purl	Tog =	Together
Pat =	Pattern	WS =	Wrong side

Fourth Block: Work as given for Second Block.
With E-5 or F-5 (Soft White), knit 2 rows (garter edge).



Fifth Block: 1st row: (RS). With B, knit.
2nd row: K3. *P3. K5. Rep from * to last 7 sts. P3. K3.
3rd row: K1. P2. *K3. P5. Rep from * to last 5 sts. K3. P2. K1
4th row: As 2nd row.
5th row: Knit.
6th row: K1. P1. *K5. P3. Rep from * to last 7 sts. K5. P1. K1.
7th row: K2. *P5. K3. Rep from * to last st. P5. K2.
8th row: As 6th row.
Rep last 8 rows of Basket Weave Pat for approx 8" [20.5 cm],
ending on 4th or 8th row.



With E-5 or F-5 (Soft White), knit 2 rows (garter edge).

Sixth Block: Work as given for Second Block.
With A, cast off.





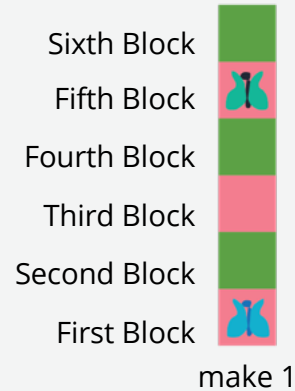
MAKE THIS

INSTRUCTIONS

STRIP 4 (make 1).

ABBREVIATIONS

Approx =	Approximately	Rem =	Remaining
Beg =	Beginning	Rep =	Repeat
Cont =	Continue(ity)	RS =	Right side
K =	Knit	St(s) =	Stitch(es)
P =	Purl	Tog =	Together
Pat =	Pattern	WS =	Wrong side



First Block: With D, cast on 33 sts.

1st row: With D, knit.

2nd row: K1. Purl to last st. K1.

Rep last 2 rows of stocking st with 1 st of garter edge at each side for 8" [20.5 cm], ending on a WS row.

With E-5 or F-5 (Soft White), knit 2 rows (garter edge).

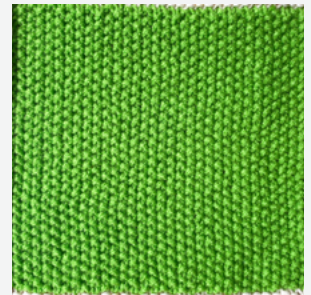


Second Block: 1st row: (RS). With C, knit.

2nd row: K1. *P1. K1. Rep from * to end of row.

Rep last row of Seed St Pat for 8" [20.5 cm], ending on a WS row.

With E-5 or F-5 (Soft White), knit 2 rows (garter edge).



Third Block: 1st row: With D, knit.

2nd row: K1. Purl to last st. K1.

Rep last 2 rows of stocking st with 1 st of garter edge at each side for 8" [20.5 cm], ending on a WS row.

With E-5 or F-5 (Soft White), knit 2 rows (garter edge).





MAKE THIS

INSTRUCTIONS

ABBREVIATIONS

Approx =	Approximately	Rem =	Remaining
Beg =	Beginning	Rep =	Repeat
Cont =	Continue(ity)	RS =	Right side
K =	Knit	St(s) =	Stitch(es)
P =	Purl	Tog =	Together
Pat =	Pattern	WS =	Wrong side

Fourth Block: 1st row: (RS). With C, knit.
2nd row: K3. *P3. K5. Rep from * to last 7 sts. P3. K3.
3rd row: K1. P2. *K3. P5. Rep from * to last 5 sts. K3. P2. K1
4th row: As 2nd row.
5th row: Knit.
6th row: K1. P1. *K5. P3. Rep from * to last 7 sts. K5. P1. K1.
7th row: K2. *P5. K3. Rep from * to last st. P5. K2.
8th row: As 6th row.
 Rep last 8 rows of Basket Weave Pat for approx 8" [20.5 cm], ending on 4th or 8th row.



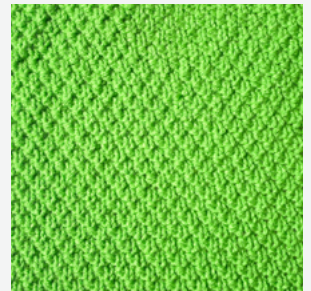
With E-5 or F-5 (Soft White), knit 2 rows (garter edge).

Fifth Block: With D, as Third Block.

With E-5 or F-5 (Soft White), knit 2 rows (garter edge).



Sixth Block: 1st row: (RS). With C, knit.
2nd and 3rd rows: K1. *K1. P1 Rep from * to last 2 sts. K2.
4th and 5th rows: K1. *P1. K1. Rep from * to end of row.
 Rep last 4 rows of Moss St Pat for 8" [20.5 cm], ending on a 2nd or 4th row.
 With D, cast off in pat.



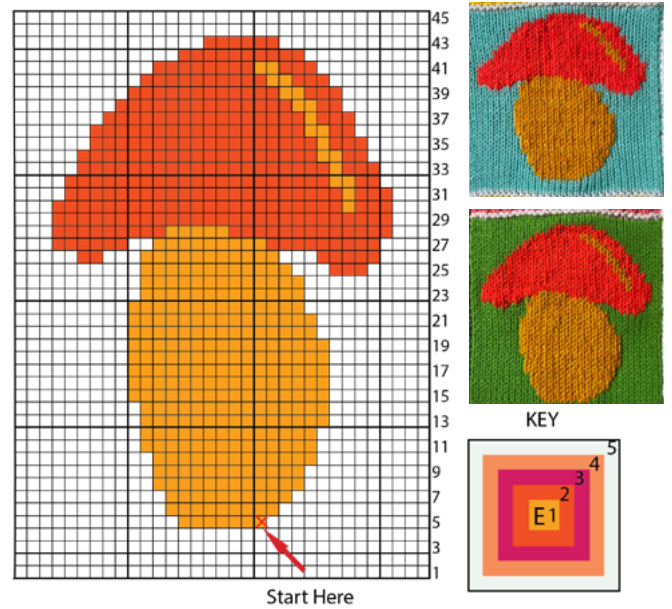
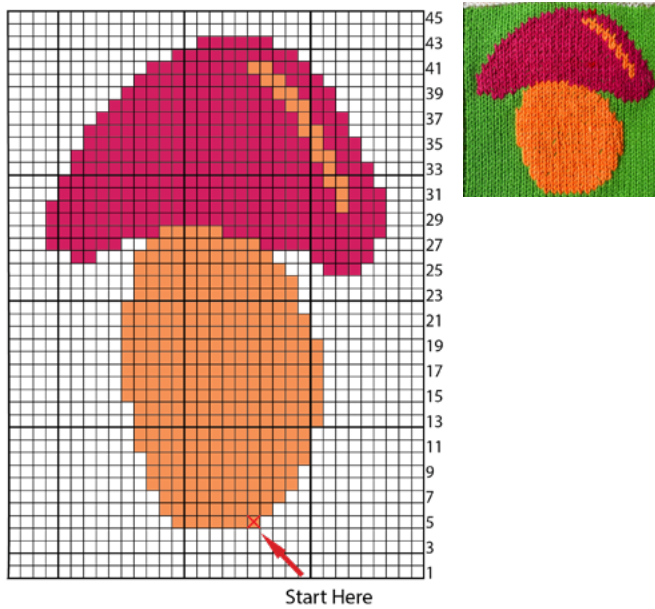
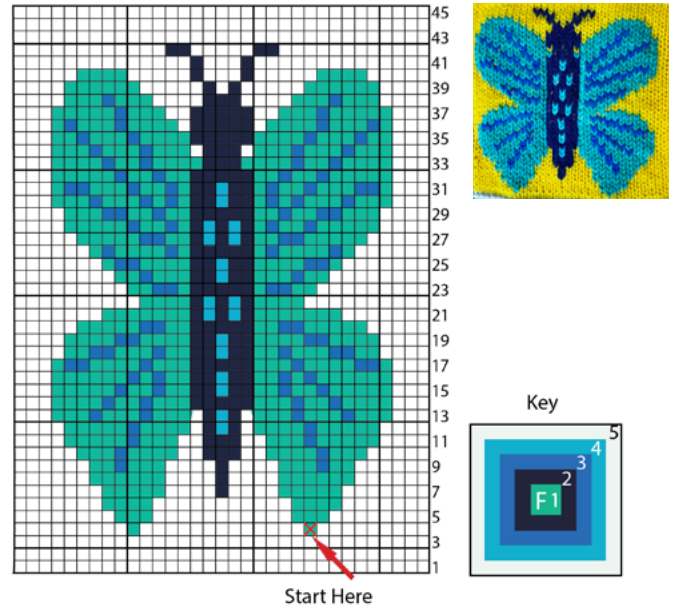
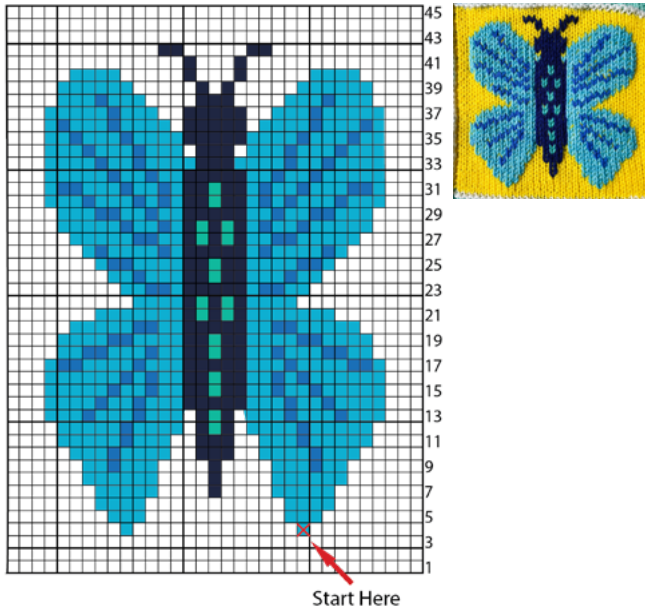


MAKE THIS

ABBREVIATIONS

- Approx** = Approximately
- Beg** = Beginning
- Cont** = Continue(ity)
- K** = Knit
- P** = Purl
- Pat** = Pattern
- Rem** = Remaining
- Rep** = Repeat
- RS** = Right side
- St(s)** = Stitch(es)
- Tog** = Together
- WS** = Wrong side

EMBROIDERY DIAGRAMS





MAKE THIS

INSTRUCTIONS

ABBREVIATIONS	
Approx =	Rem = Remaining
Approximately	Rep = Repeat
Beg = Beginning	RS = Right side
Cont = Continue(ity)	St(s) = Stitch(es)
K = Knit	Tog = Together
P = Purl	WS = Wrong side
Pat = Pattern	

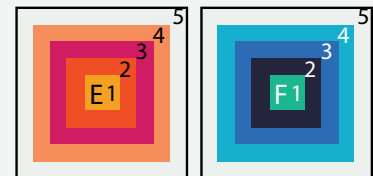
FINISHING

Cut and wind into separate color butterfly mini-balls of shades Contrast E and Contrast F.



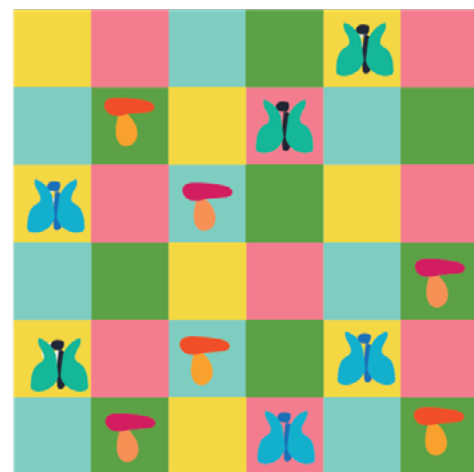
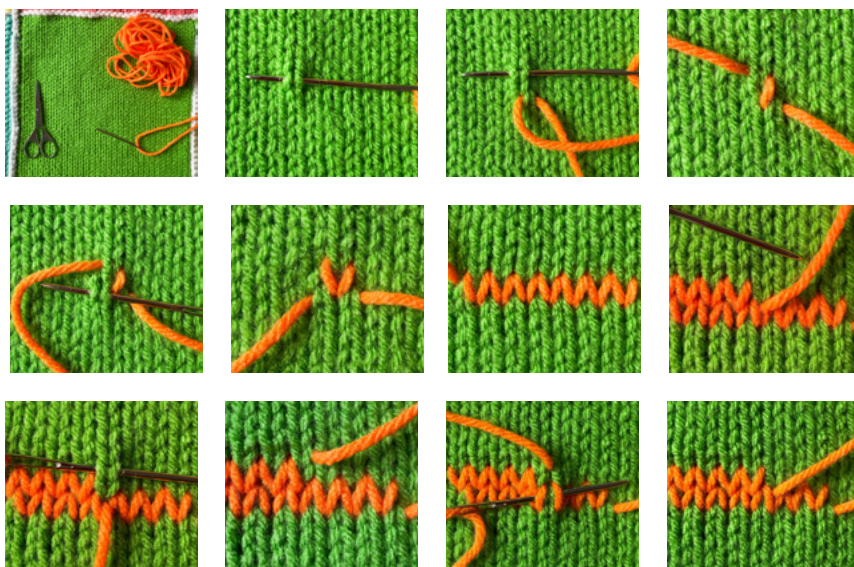
Using Assembly Diagram (*below*) as a guide for embroidery Blocks, embroider using Duplicate Stitch. (See *Embroidery Diagrams on page 12.*)

Separate colors of Red Heart® All In One™ Granny Square™ for duplicate stitch embroidery. Each color will have an individual number: E-1, E-2, E-3, E-4, E-5 and F-1, F-2, F-3, F-4, F-5.

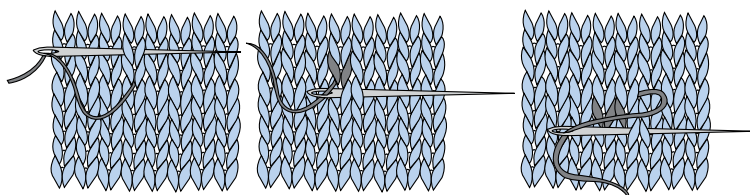


After embroidery is complete, pin Strips onto a flat surface to measure approx 8" x 48½" [20.5 x 123 cm]. Cover with a damp cloth and allow cloth to dry on Strips.

Assembly Diagram



Strip 1 Strip 3 Strip 1
Strip 2 Strip 4 Strip 2



Duplicate stitch



MAKE THIS

INSTRUCTIONS

ABBREVIATIONS

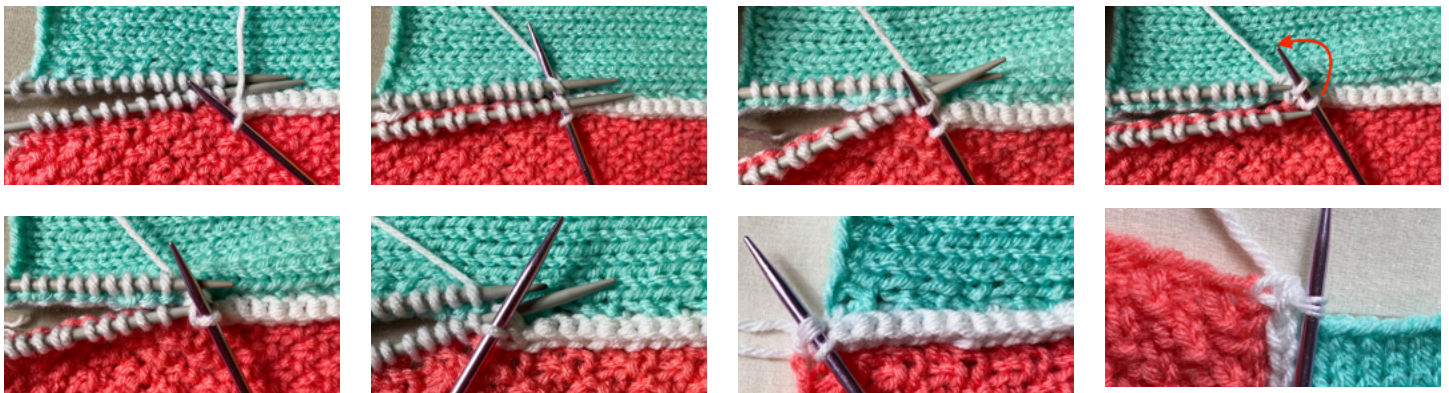
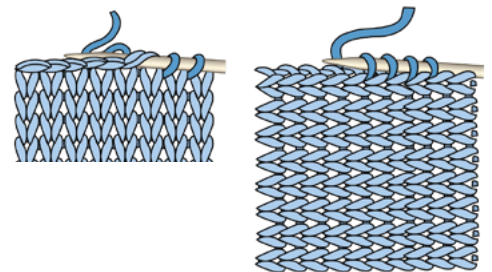
Approx =	Rem = Remaining
Approximately	Rep = Repeat
Beg = Beginning	RS = Right side
Cont = Continue(ity)	St(s) = Stitch(es)
K = Knit	Tog = Together
P = Purl	WS = Wrong side
Pat = Pattern	

Assembly: Following Assembly Diagram, join 6 Strips into Blanket using 3-needle cast off method as follows:

3-needle cast off method:

- With WS of Strips tog, align 2 circular needles in same direction. *Insert working needle into first sts of top needle and bottom needle, then K2tog.
- Pass first st on right-hand needle over second st (just knitted) onto right-hand needle and slip off. 1 st rem on right-hand needle. 1 st has been cast off.
- Rep from * until all sts are cast off.

Rep to join all 6 Strips.



Side Strip Border: With first circular needle and E-5 or F-5 (Soft White), pick up and knit at each end 'bump' along side edge of Strip 1. With second circular needle and E-5 or F-5 (Soft White), pick up and knit at each end 'bump' along side edge of adjoining side of Strip 2.



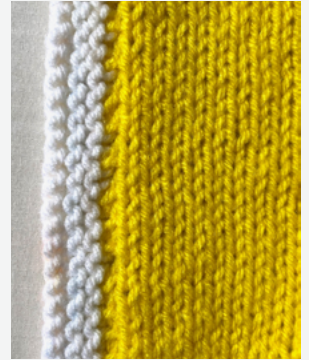
MAKE THIS

INSTRUCTIONS

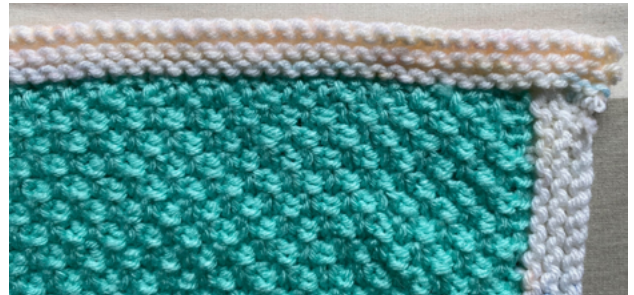
ABBREVIATIONS

Approx =	Rem = Remaining
Approximately	Rep = Repeat
Beg = Beginning	RS = Right side
Cont = Continue(ity)	St(s) = Stitch(es)
K = Knit	Tog = Together
P = Purl	WS = Wrong side
Pat = Pattern	

Side edging: With RS facing, E-5 or F-5 (Soft White) and circular needle, pick up and knit at each end 'bump' along side edge. 200 sts.
Knit 4 rows.
Cast off knitwise (WS).
Rep for opposite side.



Top and Bottom edging: With RS facing, E-5 or F-5 (Soft White) and circular needle, pick up and knit 210 sts evenly across top edge of Blanket.
Knit 4 rows.
Cast off knitwise (WS).
Rep for bottom edge.



We love seeing your makes! Share your photos using #YARNSPO and tag us @yarnspirations on Instagram or find us on Facebook.