



KNIT | SKILL LEVEL: INTERMEDIATE

ABBREVIATIONS

Approx =

Approximately

Beg = Beginning

Cont = Continue(ity)

K = Knit

Rep = Repeat

RS = Right side

Sl1P(3)wyib = Slip

next 1 (3) stitch(es)

purlwise with yarn at

back of work

Sl1P(3)wyif = Slip

next 1 (3) stitch(es)

purlwise with yarn at

front of work

St(s) = Stitch(es)

Tog = Together

WS = Wrong side

MEASUREMENTS

Approx 60" x 72" [152.5 x 183 cm].

GAUGE

17 sts and 34 rows = 4" [10 cm] in garter st.

Each Motif (before edging) measures approx 12" [30.5 cm] square.

INSTRUCTIONS

Note: Each row of squares in chart represents 2 rows of knitting (which is why only odd numbers are shown at beg of each chart row). The first square in left column indicates color of yarn being worked in that row. For eg, in rows 3 & 4, all blank (white) squares are knit, and all red squares are slipped with yarn at WS of work. In rows 5 & 6, all red squares are knit and all blank (white) squares are slipped with yarn at WS of work.



MATERIALS

Red Heart® Super Saver® (7 oz/198 g; 364 yds/333 m)

Contrast A Aran (0313)

5 balls or 1650 yds/1500 m

Contrast B Cherry Red (0319)

5 balls or 1650 yds/1500 m

Size U.S. 8 (5 mm) Susan Bates® knitting needles. Size U.S. 8 (5 mm) Susan Bates® circular knitting needle 36" [90 cm] long **or size needed to obtain gauge.** Susan Bates® yarn needle.

MOTIF 1 (make 15)
With B, cast on 51 sts.
1st row: (WS). Knit.

Following chart for Motif 1 on page 3, proceed in pat as follows:

1st and 2nd rows: With B, knit.
3rd row: (RS). With A, K1. Sl1Pwyib. With A, K3. Sl1Pwyib. (With A, K1. Sl1Pwyib) 4 times. [With A, K3. Sl1Pwyib. (With A, K1. Sl1Pwyib) 3 times] twice. With A, K3. Sl1Pwyib. (With A, K1. Sl1Pwyib) 4 times. With A, K3. Sl1Pwyib. K1.
4th row: (WS). With A, K1. Sl1Pwyif. With A, K3. Sl1Pwyif. (With A, K1. Sl1Pwyif) 4 times. [With A, K3. Sl1Pwyif. (With A, K1. Sl1Pwyif) 3 times] twice. With A, K3. Sl1Pwyif. (With A, K1. Sl1Pwyif) 4 times. With A, K3. Sl1Pwyif. K1.
5th row: (RS). With B, K1. (With B, K1. Sl1Pwyib) twice. With B, K9. (Sl1Pwyib. With B, K1. Sl1Pwyib. With B, K7) 3 times. With B, K2. (Sl1Pwyib. With B, K1) twice. With B, K1.
6th row: (WS). With B, K1. (With B, K1. Sl1Pwyif) twice. With B, K9. (Sl1Pwyif. With B, K1. Sl1Pwyif. With B, K7) 3 times. With B, K2. (Sl1Pwyif. With B, K1) twice. With B, K1.

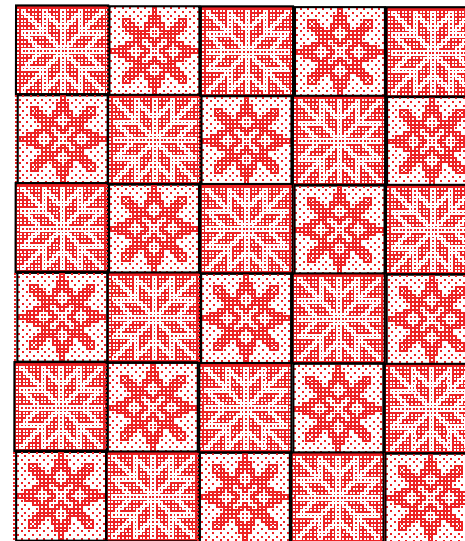
Chart 1 is now in position. First 6 rows of chart are complete. Cont to work chart to end of chart, ending on 98th row. With B, knit 1 row. Cast off knitwise (WS).

MOTIF 2 (make 15)
With A, cast on 51 sts.
1st row: (WS). Knit.

Following chart for Motif 2 on page 3, proceed in pat as follows:

1st and 2nd rows: With A, knit.
3rd row: (RS). (With B, K1. Sl3Pwyib) 6 times. With B, K3. (Sl3Pwyib. With B, K1) 6 times.
4th row: (WS). (With B, K1. Sl3Pwyif) 6 times. With B, K3. (Sl3Pwyif. With B, K1) 6 times.
5th row: With A, K24. Sl1Pwyib. With A, K1. Sl1Pwyib. With A, K24.
6th row: With A, K24. Sl1Pwyif. With A, K1. Sl1Pwyif. With A, K24. Chart 2 is now in position. First 6 rows of chart are complete. Cont to work chart to end of chart, ending on 98th row. With A, knit 1 row. Cast off knitwise (WS).

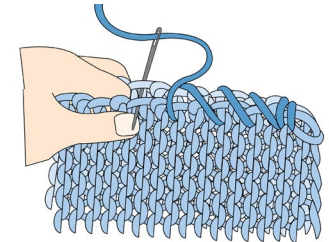
FINISHING
Pin all pieces to measurements. Cover with a damp cloth leaving cloth to dry. Following assembly diagram, sew 6 Motifs tog into 5 strips using flat seaming. Sew strips tog into Blanket using garter mattress st.



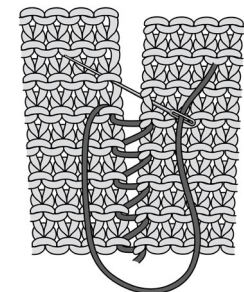
ASSEMBLY DIAGRAM

Top and bottom edgings: With RS facing, circular needle and B, pick up and knit 255 sts evenly across top edge of Blanket. Knit 2 rows. Cast off knitwise (WS). Rep for bottom edge.

Side edgings: With RS facing, circular needle and B, pick up and knit 310 sts evenly along side edge of Blanket. Knit 2 rows. Cast off knitwise (WS). Rep for other edge.

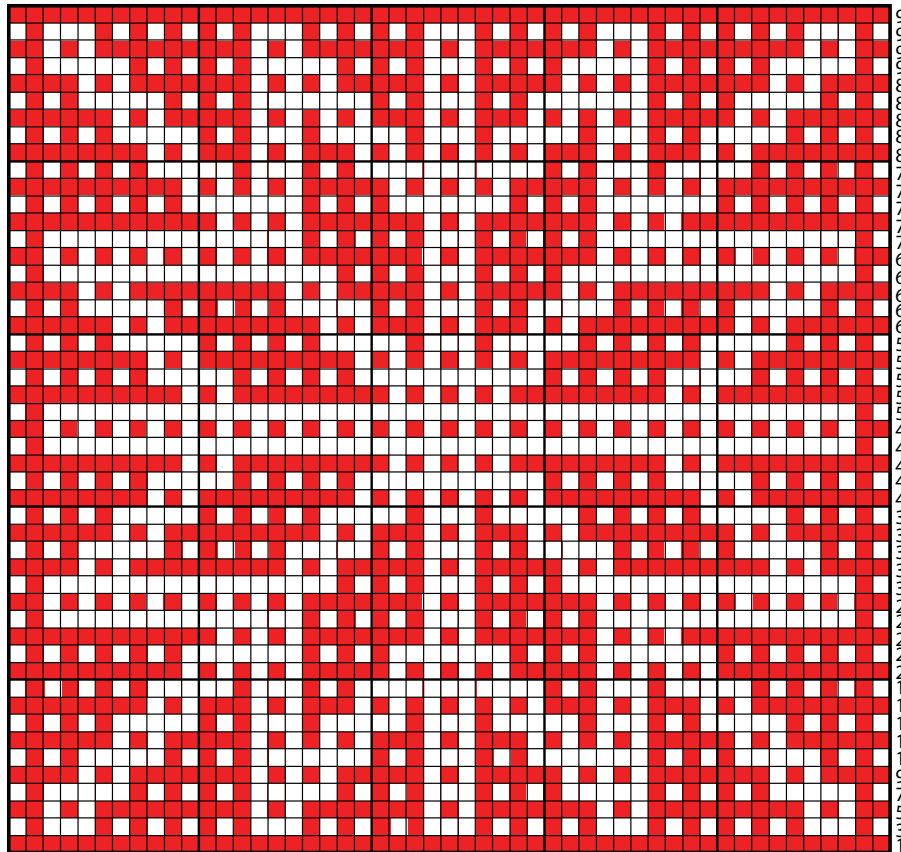


FLAT SEAMING



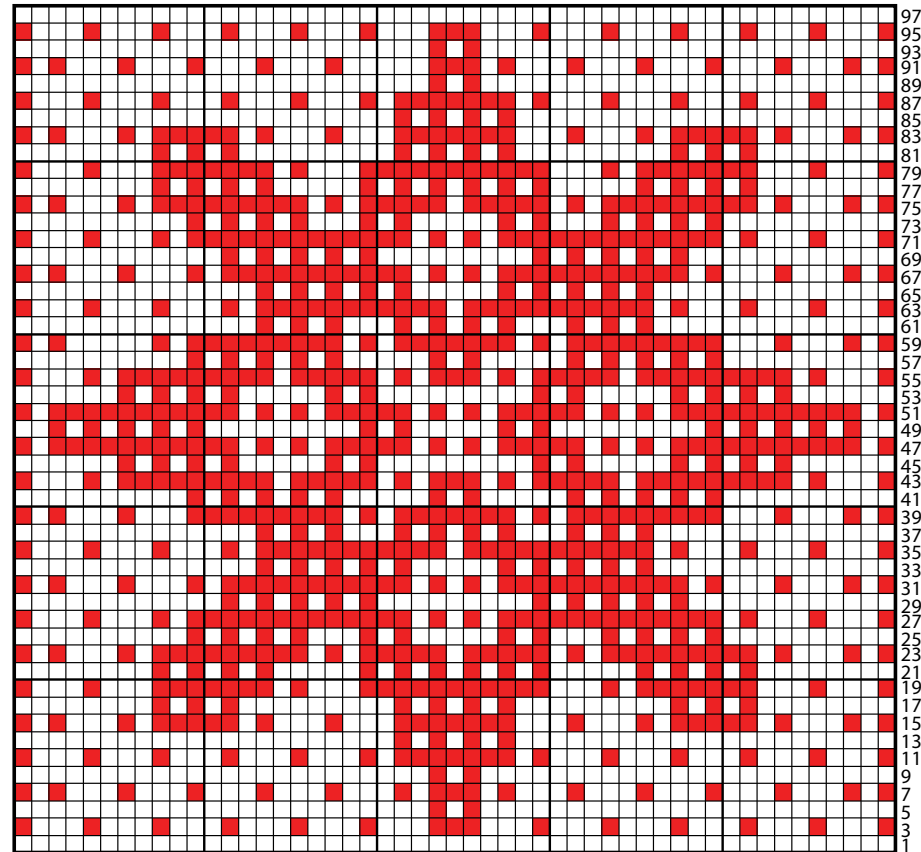
GARTER MATTRESS STITCH

MOTIF 1



Start Here

MOTIF 2



Start Here

Key

- Contrast A
- Contrast B