



KNIT | SKILL LEVEL: EASY

ABBREVIATIONS

Approx = Approximately

Cont = Continue(ity)

Dec = Decrease

Inc = Increase

K = Knit

P = Purl

Pat = Pattern

Rep = Repeat

RS = Right side

Sl1P = Slip 1 stitch purlwise

Sl1Pwyib = Slip 1 stitch purlwise with yarn in back

Sl1Pwyif = Slip 1 stitch purlwise with yarn in front

St(s) = Stitch(es)

WS = Wrong side

MEASUREMENTS

Approx 48" x 56" [122 x 142 cm].

GAUGE

17 sts and 23 rows = 4" [10 cm] in stocking st.

Each Motif (before edging) measures approx 8" [20.5 cm] square.

INSTRUCTIONS

Note: Bottom and top edging of each Motif worked in garter st at the same time as each Motif.

Cast on using 2-needle method and note 1st row is WS. Cast off knitwise on WS.

MATERIALS

Red Heart® Super Saver® (7 oz/198 g; 364 yds/333 m)

Contrast MC Buff (0334) **3 balls or 810 yds/735 m**

Contrast A Country Blue (0382) **2 balls or 680 yds/615 m**

Contrast B Orchid (0530) **2 balls or 465 yds/420 m**

Contrast C Tea Leaf (0624) **2 balls or 465 yds/420 m**

Size U.S. 8 (5 mm) Susan Bates® knitting needles. Size U.S. 8 (5 mm) Susan Bates® circular knitting needle 36" [90.5 cm] long **or size needed to obtain gauge.** Susan Bates® yarn needle.

Motif #1 – Garter Ridges (With A make 4)



Bottom Edging: With MC, cast on 32 sts.
Knit 3 rows (garter st), inc 1 st at center of last row and ending on a WS row. 33 sts.

Join A and proceed as follows:

1st row: (RS). Knit.

2nd row: K1. Purl to last st. K1.

3rd row: As 1st row.

4th row: Knit.

Rep last 4 rows rows for Pat for approx 8" [20.5 cm], ending on a 2nd row.

Top edging: Next row: With MC, knit, dec 1 st at center. 32 sts.

Next 2 rows: Knit.

Cast off knitwise (WS).

Motif #2 – Vertical Ridges (With B Make 5)



Bottom Edging: With MC, cast on 32 sts.
Knit 3 rows (garter st), inc 1 st at center of last row and ending on a WS row. 33 sts.

Join B and proceed as follows: (multiple of 4 sts plus 5).

1st row: (RS). K4. *S11P. K3. Rep from * to last st. K1.

2nd row: K1. Purl to last st. K1.

Rep last 2 rows of Ridge Pat for 8" [20.5 cm], ending on a 2nd row.

Top edging: Next row: With MC, knit, dec 1 st at center. 32 sts.

Next 2 rows: Knit.

Cast off knitwise (WS).

Motif #3 – Stripe Pat (With A, B and C, make 5)



Bottom Edging: With MC, cast on 32 sts.
Knit 3 rows (garter st), inc 1 st at center of last row and ending on a WS row. 33 sts.

Join A and proceed as follows:

1st row: (RS). Knit.

2nd row: K1. Purl to last st. K1.

3rd and 4th rows: As 1st and 2nd rows.

5th and 6th rows: (Garter Ridge). With MC, knit.

7th to 10th rows: With B, as 1st and 2nd rows twice.

11th and 12th rows: (Garter Ridge). With MC, knit.

13th to 16th rows: With C, as 1st and 2nd rows twice.

17th and 18th rows: (Garter Ridge). With MC, knit.

Rep last 18 rows of Stripe Pat, for approx 8" [20.5 cm], ending with 4 rows of stocking st.

Top edging: Next row: With MC, knit, dec 1 st at center. 32 sts.

Next 2 rows: Knit.

Cast off knitwise (WS).

Motif #4 - Basket Weave Pat (With A make 5)



Bottom Edging: With MC, cast on 32 sts.
Knit 3 rows (garter st), inc 1 st at center of last row and ending on a WS row. 33 sts.

Join A and proceed as follows: (multiple of 8 sts plus 5).

1st row: (RS). Knit.

2nd row: K3. *P3. K5. Rep from * to last 7 sts. P3. K3.

3rd row: K1. P2. *K3. P5. Rep from * to last 5 sts. K3. P2. K1

4th row: As 2nd row.

5th row: Knit.

6th row: K1. P1. *K5. P3. Rep from * to last 7 sts. K5. P1. K1.

7th row: K2. *P5. K3. Rep from * to last st. P5. K2.

8th row: As 6th row.

These 8 rows form Basket Weave Pat.

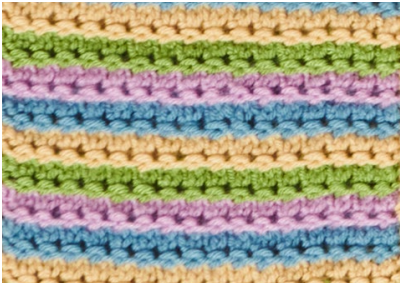
Cont in pat for approx 8" [20.5 cm], ending on a 1st or 5th row.

Top edging: Next row: With MC, knit, dec 1 st at center. 32 sts.

Next 2 rows: Knit.

Cast off knitwise (WS).

Motif #5 – Stocking St Ridges (With A, B and C, make 5)



Note: Sts can not be counted after 2nd row.

Stripe Pat: Work 4 rows of each color in the following sequence:
A, B, C, MC.

These 16 rows form Stripe Pat.

Bottom Edging: With MC, cast on 32 sts.

Knit 3 rows (garter st), inc 2 sts evenly across of last row and ending on a WS row. 34 sts.

Proceed as follows: (multiple of 2 sts plus 2).

1st row: (RS). With A, knit.

2nd row: K1. *K2tog. Rep from * to last st. K1. 18 sts.

3rd row: K1. *Kfb. Rep from * to last st. K1. 34 sts.

4th row: K1. Purl to last st. K1.

First 4 rows of Stripe Pat are complete.

Cont in Stripe Pat, rep last 4 rows for approx 8" [20.5 cm], ending on a 4th row.

Top edging: Next row: With MC, knit, dec 2 sts evenly across. 32 sts.

Next 2 rows: Knit.

Cast off knitwise (WS).

Motif #6 – Chain Stitch (With C make 5)



Bottom Edging: With MC, cast on 32 sts.

Knit 3 rows (garter st), inc 1 st at center of last row and ending on a WS row. 33 sts.

Join C and proceed as follows: (multiple of 2 sts plus 3).

1st row: (RS). K1. P1. *Sl1Pwyif. P1. Rep from * to last st. K1.

2nd row: K3. *Sl1Pwyib. K1. Rep from * to last 2 sts. K2.

3rd row: Knit.

4th row: K1. Purl to last st. K1.

5th and 6th rows: As 3rd and 4th rows.

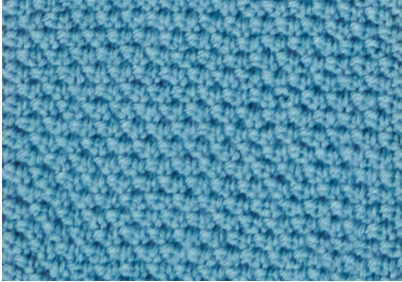
Rep last 6 rows for Chain St Pat for approx 8" [20.5 cm], ending on a 3rd row of pat.

Top edging: Next row: With MC, knit, dec 1 st at center. 32 sts.

Next 2 rows: Knit.

Cast off knitwise (WS).

Motif #7 – Moss St (With A make 4)



Bottom Edging: With MC, cast on 32 sts.
Knit 3 rows (garter st), inc 1 st at center of last row and ending on a WS row. 33 sts.

Join A and proceed as follows: (multiple of 2 sts plus 3).
1st row: (RS). K1. *P1. K1. Rep from * to end of row.
2nd and 3rd rows: K1. *K1. P1 Rep from * to last 2 sts. K2.
4th row: As 1st row.
Rep last 4 rows of Moss Stitch Pat for 8" [20.5 cm], ending on a 2nd or 4th row.

Top edging: Next row: With MC, knit, dec 1 st at center. 32 sts.
Next 2 rows: Knit.
Cast off knitwise (WS).

Motif #8 - Broken Rib (With B make 4)



Bottom Edging: With MC, cast on 32 sts.
Knit 3 rows (garter st), inc 1 st at center of last row and ending on a WS row. 33 sts.

Join B and proceed as follows: (multiple of 2 sts plus 1).
1st row: (RS): K1. *P1. K1. Rep from * to end of row.
2nd row: K1. Purl to last st. K1.
Rep 1st and 2nd rows for Broken Rib pat for 8" [20.5 cm], ending on a 2nd row.

Top edging: Next row: With MC, knit, dec 1 st at center. 32 sts.
Next 2 rows: Knit.
Cast off knitwise (WS).

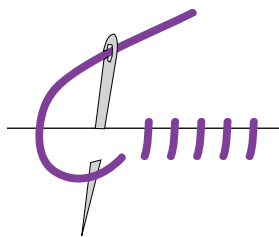
Motif #9 – Seed St Blocks (With C make 5)



Bottom Edging: With MC, cast on 32 sts.
Knit 3 rows (garter st), inc 1 st at center of last row and ending on a WS row. 33 sts.

Join C and proceed as follows: (multiple of 7 sts plus 5).
1st row: (RS). *(K1. P1) twice. K3. Rep from *, ending with (K1. P1) twice. K1.
2nd row: *(K1. P1) twice. K1. P2. Rep from *, ending (K1. P1) twice. K1.
3rd to 6th rows: As 1st and 2nd rows twice more.
7th row: K1. Purl to last st. K1.
8th row: Knit.
 Rep 1st to 8th rows for pat for 8" [20.5 cm], ending on a WS row.

Top edging: Next row: With MC, knit, dec 1 st at center. 32 sts.
Next 2 rows: Knit.
 Cast off knitwise (WS).



WHIP STITCH

FINISHING

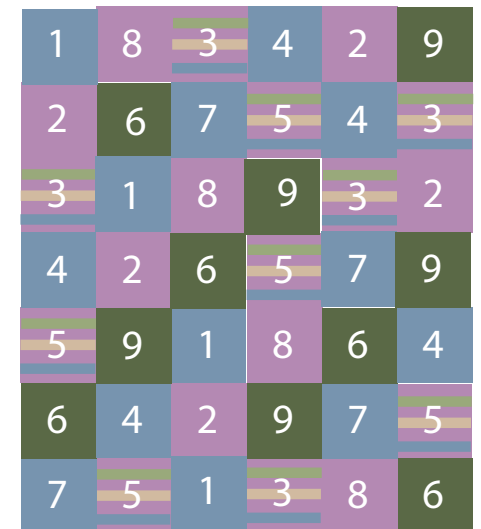
Some Motifs may require blocking. Pin Motifs on a flat surface to measure approx 8 x 9" [20.5 x 23 cm] (including top and bottom edging). Cover with a damp cloth and allow cloth to dry on Motif. **Do not** press.

Assembly: Following Assembly Diagram, sew Motifs in 6 vertical strips of 7 Motifs each using whip stitch.

Side Strip Border: With RS facing, circular needle and MC, pick up and knit at each side 'bump' along side edge of First Strip.
Knit 2 rows (garter st), ending on a WS row. Cast off knitwise.

Rep for all long side edges of all 6 vertical strips.

Assembly: Following Assembly Diagram, sew 6 vertical strips into Blanket using whip stitch.



ASSEMBLY DIAGRAM