



KNIT | SKILL LEVEL: INTERMEDIATE

ABBREVIATIONS

Approx = Approximately

Beg = Beginning

Dec = Decreasing

Inc = Increasing

K = Knit

P = Purl

Pat = Pattern

Rep = Repeat

RS = Right side

Sl1Pwyib = Slip next stitch purlwise with yarn at back of work

Sl1Pwyif = Slip next stitch purlwise with yarn at front of work

St(s) = Stitch(es)

WS = Wrong side

MEASUREMENTS

Approx 7 x 9" [18 x 23 cm].

GAUGE

17 sts and 23 rows = 4" [10 cm] in stocking st.

INSTRUCTIONS

With A, cast on 30 sts.

Knit 3 rows (garter st), noting 1st row is WS and inc 5 sts evenly across last row 35 sts.

Proceed in pat as follows (See chart on page 2):

1st row: (RS). With A, knit.

2nd row: K2. *P1, wrapping yarn twice around needle. P5. Rep from * to last 3 sts. P1, wrapping yarn twice around needle. K2.

3rd row: With B. K2. *Sl1Pwyib, dropping extra loop. K5. Rep from * to last 3 sts. Sl1Pwyib, dropping extra loop. K2.

4th row: K2. *Sl1Pwyif. K5. Rep from * to last 3 sts. Sl1Pwyif. K2.

5th row: With A, knit.

MATERIALS

Red Heart® Super Saver® (7 oz/198g; 364 yds /333 m)

Contrast A Grey Heather (0400)

1 ball or 38 yds/35 m

Contrast B Flame (3251)

1 ball or 20 yds/18 m

Note: 1 ball of each of Contrast A and B will make 10 Blocks.

Size U.S. 8 (5 mm) knitting needles **or size needed to obtain gauge.**

6th row: K2. *P1. P1, wrapping yarn twice around needle. P3. P1, wrapping yarn twice around needle. Rep from * to last 3 sts. P1. K2.

7th row: With B, K3. *Sl1Pwyib, dropping extra loop. K3. Sl1Pwyib, dropping extra loop. K1. Rep from * to last 2 sts. K2.

8th row: K3 *Sl1Pwyif. K3. Sl1Pwyif. K1. Rep from * to last 2 sts. K2.

9th row: With A, knit.

10th row: K2. *P2. P1, wrapping yarn twice around needle. P1. P1, wrapping yarn twice around needle P1. Rep from * to last 3 sts. P1. K2.

11th row: With B, K4. *Sl1Pwyib, dropping extra loop. K1. Sl1Pwyib, dropping extra loop. K3. Rep from * to last st. K1.

12th row: K4. *Sl1Pwyif. K1. Sl1Pwyif. K3. Rep from * to last st. K1.

13th row: With A, knit.

14th row: K2. *P3. P1, wrapping yarn twice around needle. P2. Rep from * to last 3 sts. P1. K2.

15th row: With B, *K5. Sl1Pwyib, dropping extra loop. Rep from * to last 5 sts. K5.

16th row: *K5. Sl1Pwyif. Rep from * to last 5 sts. K5.

17th row: With A, knit.

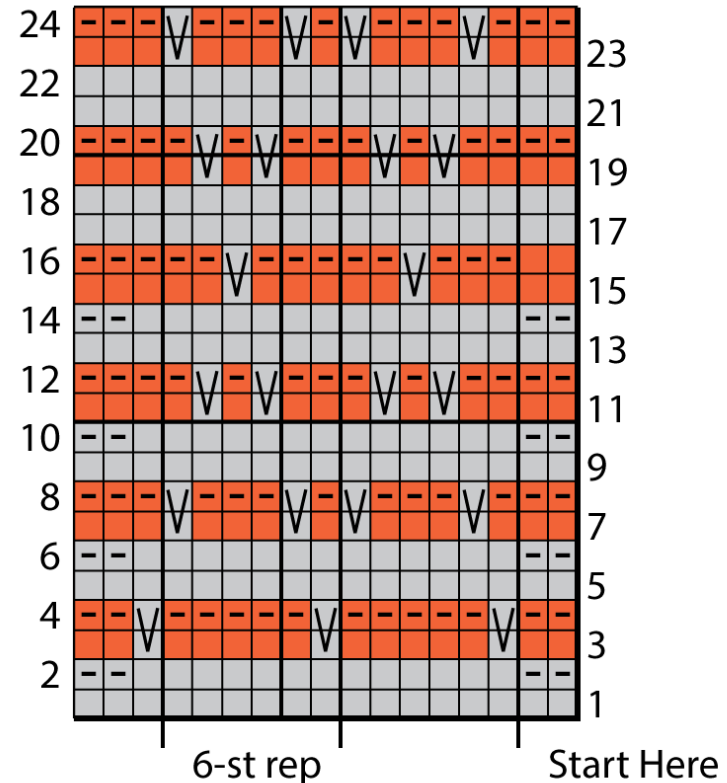
18th to 20th rows: As 10th to 12th rows.

21st row: With A, knit.

22nd to 24th rows: As 6th to 8th rows.

Rep these 24 rows for pat until work from beg measures 8¾" [22 cm], ending on a RS row. Break B.

With A, knit 2 rows (garter st), dec 5 sts evenly across first row. 30 sts. Cast off knitwise (WS).



Key

☐ = A

☐ = B

☐ = With A, Sl1Pwyib on RS rows
With A, Sl1Pwyif on WS rows