



## MATERIALS

**Red Heart® Super Saver®** (7 oz/198 g; 364 yds/333 m)

Light Gray (0341)

**1 ball or 50 yds/45 m**

Note: 1 ball makes 7 Blocks.

Size U.S. 8 (5 mm) knitting needles **or size needed to obtain gauge.**  
Cable needle. Yarn needle.



KNIT | SKILL LEVEL: **INTERMEDIATE**

## ABBREVIATIONS

**Approx** = Approximately

**Beg** = Beginning

**C4B** = Slip next 2 stitches onto cable needle and leave at back of work. K2, then K2 from cable needle

**C4F** = Slip next 2 stitches onto cable needle and leave at front of work. K2, then K2 from cable needle

**Dec** = Decreasing

**Inc** = Increasing

**K** = Knit

**K1tbl** = Knit next stitch through back of loop

**MB** = Make Bobble - [(K1. K1tbl) 3 times. K1] all in indicated stitch. Pass 6th, 5th, 4th, 3rd, 2nd and 1st stitches over 7th stitch

**P** = Purl

**Pat** = Pattern

**Rep** = Repeat

**RS** = Right side

**St(s)** = Stitch(es)

**T2B** = Slip next stitch onto cable needle and leave at back of work. K1, then P1 from cable needle

**T2F** = Slip next stitch onto cable needle and leave at front of work. P1, then K1 from cable needle

**WS** = Wrong side

## MEASUREMENTS

Approx 7 x 9" [18 x 23 cm].

## GAUGE

17 sts and 23 rows = 4" [10 cm] in stocking st.

## INSTRUCTIONS

Cast on 30 sts.

Knit 3 rows (garter st), noting 1st row is WS and inc 7 sts evenly across last row 37 sts.

Proceed in pat as follows (see chart):

**1st row:** (RS). K2. P3. K4. P8. K3. P8. K4. P3. K2.

**2nd and all WS rows:** K2. Knit all knit sts and purl all purl sts as they appear to last 2 sts. K2.

**3rd row:** K2. P3. C4B. P7. T2B. K1. T2F. P7. C4F. P3. K2.

**5th row:** K2. P3. K4. P6. T2B. P1. K1. P1. T2F. P6. K4. P3. K2.

**7th row:** K2. P3. K4. P5. T2B. P2. K1. P2. T2F. P5. K4. P3. K2.

**9th row:** K2. P3. C4B. P4. T2B. P1. T2B. K1. T2F. P1. T2F. P4. C4F. P3. K2.

**11th row:** K2. P3. K4. P3. (T2B. P1) twice. K1. (P1. T2F) twice. P3. K4. P3. K2.

**13th row:** K2. P3. K4. P3. MB. P1. T2B. P2. K1. P2. T2F. P1. MB. P3. K4. P3. K2.

**15th row:** K2. P3. C4B. P5. MB. P1. T2B. K1. T2F. P1. MB. P5. C4F. P3. K2.

**17th row:** K2. P3. K4. P7. MB. P1. K1. P1. MB. P7. K4. P3. K2.

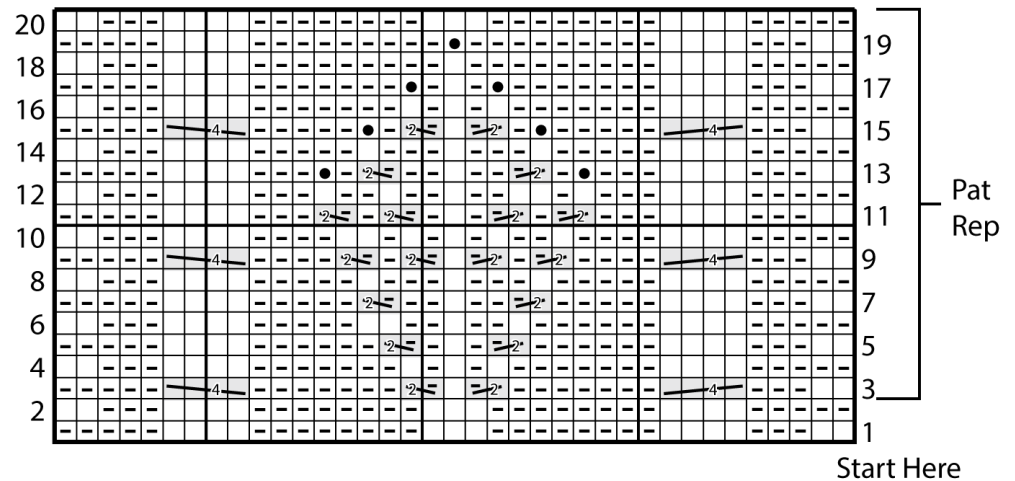
**19th row:** K2. P3. K4. P9. MB. P9. K4. P3. K2.

**20th row:** K5. P4. K8. P3. K8. P4. K5. Rep these 3rd to 20th rows for pat once more.

**Next row:** K2. P3. K4. P19. K4. P3. K2.

**Next row:** K5. P4. K19. P4. K5.

Knit 2 rows (garter st), dec 7 sts evenly across first row. 30 sts. Cast off knitwise (WS).



### Key

□ = Knit on RS rows. Purl on WS rows.

◻ = Purl on RS rows. Knit on WS rows.

▤ = T2B

▥ = T2F

▧ = C4B

▨ = C4F

● = MB