



KNIT | SKILL LEVEL: **INTERMEDIATE**

ABBREVIATIONS

Approx = Approximately

Beg = Beginning

Dec = Decreasing

Inc = Increasing

K = Knit

P = Purl

Pat = Pattern

Rep = Repeat

RS = Right side

Sl2Pwyib = Slip next 2 stitches purlwise with yarn at back of work

Sl2Pwyif = Slip next 2 stitches purlwise with yarn at front of work

St(s) = Stitch(es)

Cb4B = Slip next 2 stitches onto cable needle and leave at back of work. Sl2Pwyib, dropping extra loops, then K2 from cable needle

Cb4F = Slip next 2 stitches onto cable needle, dropping extra loops and leave at front of work. K2, then Sl2Pwyib from cable needle

WS = Wrong side

MEASUREMENTS

Approx 7 x 9" [18 x 23 cm].

GAUGE

17 sts and 23 rows = 4" [10 cm] in stocking st.

INSTRUCTIONS

With A, cast on 34 sts.

Knit 3 rows (garter st), noting 1st row is WS and inc 6 sts evenly across last row 40 sts.

Proceed in pat as follows (See chart on page 2):

1st row: (RS). With A, knit.

2nd row: K2. P3. (P2. P4, wrapping yarn twice around each of 4 sts. P5) 3 times. K2.

MATERIALS

Red Heart® Super Saver® (7 oz/198g; 364 yds /333 m)

Contrast A Dusty Gray (0340)

1 ball or 38 yds/35 m

Contrast B Real Teal (0656)

1 ball or 20 yds/18 m

Note: 1 ball of each of Contrast A and B will make 10 Blocks.

Size U.S. 8 (5 mm) knitting needles **or size needed to obtain gauge.**
Cable needle. Yarn needle.

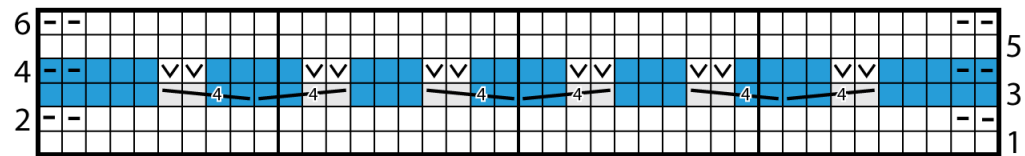
3rd row: With B, K5. (Cb4b. Cb4f. K3) 3 times. K2.

4th row: K2. P3. (Sl2Pwyif. P4. Sl2Pwyif. P3) 3 times. K2.

5th row: With A, knit.

6th row: K2. Purl to last 2 sts. K2.
Rep these 6 rows for pat until work from beg measures 8¾" [22 cm], ending on a RS row. Break B.

With A, knit 2 rows (garter st), dec 6 sts evenly across first row. 34 sts.
Cast off knitwise (WS).



Start Here

Key

□ ■ = With A or B, knit on RS rows. Purl on WS rows.

◻ ◼ = With A or B, knit on WS rows.

▬▬▬▬ = Cb4B

▬▬▬▬ = Cb4F

◻◻ = Sl2Pwyif