



KNIT | SKILL LEVEL: INTERMEDIATE

### ABBREVIATIONS

**Approx** = Approximately

**Beg** = Beginning

**Cont** = Continue(ity)

**Dec** = Decrease

**Inc** = Increase

**K** = Knit

**K2tog** = Knit next 2 stitches together

**M1** = Make 1 stitch by picking up loop lying before next stitch and knitting into back of loop

**P** = Purl

**Pat** = Pattern

**Rep** = Repeat

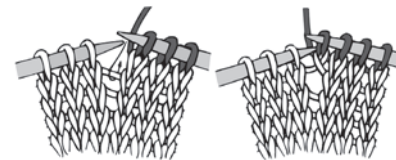
**RS** = Right side

**Sl2Pwyib** = Slip next 2 stitches purlwise with yarn in back of work

**Sl2Pwyif** = Slip next 2 stitches purlwise with yarn in front of work

**St(s)** = Stitch(es)

**WS** = Wrong side



### MATERIALS

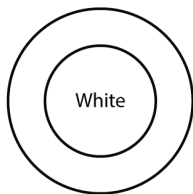
**Red Heart® Super Saver® O'Go™** (Solids: 7 oz/197 g; 364 yds/333 m; Prints: 5 oz/141 g; 236 yds/215 m)

**Main Color (MC)** White (7100)

**3 O'Gos**

**Contrast A** Baby Rainbow (7175)

**3 O'Gos**



Size U.S. 9 (5.5 mm) circular knitting needle 36" [91.5 cm] long **or size needed to obtain gauge.** Yarn needle.

### MEASUREMENTS

Approx 37" x 41" [94 x 104 cm].

### GAUGE

17 sts and 24 rows = 4" [10 cm] in Honeycomb Pat.

## INSTRUCTIONS

### Notes:

- To begin working with the O'Go format, carefully cut plastic tie where the ends of the O'Go meet.
- Pull tie to remove and start knitting!
- When joining new O'Gos, try to join shade at same point in stripe repeat to keep continuity of the color repeat.
- Extra yarn pulled out for matching stripes can be rejoined later when appropriate.
- Every row is worked with either MC or A.
- When slipping sts, hold yarn in back of work on RS and yarn in front of work on WS.
- Carry yarn when not in use loosely up side of work, taking new color from behind old color, being careful not to twist strands, when changing yarns at beg of row.
- When carrying yarn behind/in front of slipped sts, be sure yarn is loose enough to maintain gauge and prevent work from puckering.

## BLANKET

With MC, cast on 133 sts. **Do not** join.

Working back and forth across need in rows, proceed as follows:

**Bottom Edging:** Knit 11 rows (garter st), noting first row is RS.

**Inc row:** (WS). K10. M1. \*K14. M1. Rep from \* to last 11 sts. K11. 142 sts.

Proceed in Honeycomb Pat and Stripe Pat as follows (see chart):

**1st, 3rd and 5th rows:** (RS). With A, K2. Sl2Pwyib. \*K6. Sl2Pwyib. Rep from \* to last 2 sts. K2.

**2nd, 4th and 6th rows:** (WS). With A, P2. \*Sl2Pwyif. P6. Rep from \* to last 4 sts. Sl2Pwyif. P2.

**7th to 10th rows:** With MC, knit.

**11th, 13th and 15th rows:** With A, K6. \*Sl2Pwyib. K6. Rep from \* to end of row.

**12th, 14th and 16th rows:** With A, \*P6. Sl2Pwyif. Rep from \* to last 6 sts. P6.

**17th to 20th rows:** With MC, knit. These 20 rows form Honeycomb Pat.

Cont in Honeycomb Pat until work from beg measures approx 39" [99 cm], ending on a 6th or 16th row of Honeycomb Pat.

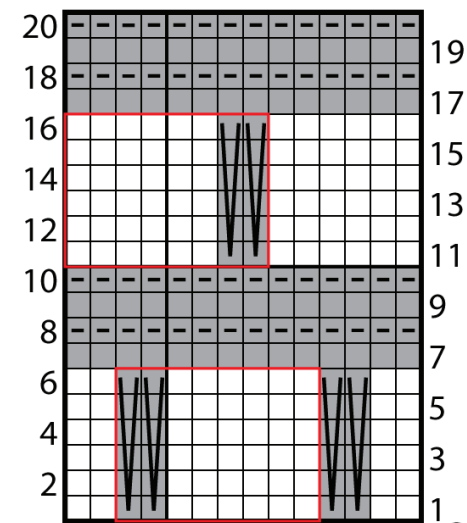
**Dec row:** (RS). With MC, K9. K2tog. \*K13. K2tog. Rep from \* to last 11 sts. K11. 133 sts.

**Top Edging:** Knit 11 rows (garter st). Cast off.

**Side edging:** With RS facing and MC, pick up and knit 152 sts evenly along right side edge of Blanket. Knit 12 rows (garter st). Cast off. Rep for opposite side.

## FINISHING

Pin Blanket to measurements. Cover with damp cloth and allow to dry.



### Key

□ = With A, knit on RS rows. Purl on WS rows.

■ = With MC, knit on RS rows.

■ = With MC, knit on WS rows.

■ = With MC, Sl2Pwyib on RS rows. Sl2Pwyif on WS rows.

□ = 8-st rep

