



KNIT
SKILL LEVEL
EASY



Designed by Diane Moyer

What you will need:

RED HEART® Sweet Home™: 6 balls 110 Snow

Susan Bates® Knitting

Needles: 12.75 mm [US 17] 29" [73.5 cm] circular needle

Row counter (optional), yarn needle

GAUGE: 5 sts = 4" [10 cm];
8 rows = 4" [10 cm]. **CHECK YOUR GAUGE.** Use any size needles to obtain the gauge.



RED HEART® Sweet Home™, Art. E891 available in

solid color 10.5 oz (300 g),
193 yd (177 m) balls

Beautiful Basketweave Throw

You'll love the softness of this chenille yarn as you relax with it each evening. Curl up with your favorite book or next project!

SHOP KIT

Throw measures about 44 x 52" [111 x 132 cm].

Notes

1. Throw is worked, back and forth in rows, in a pattern of knit and purl rectangles.
2. Use a row counter to help ensure that each repeat contains the same number of rows.
3. The long tail cast on requires 3½ yards for the tail.
4. Cast on and bind off loosely.

THROW

Using long tail cast on, cast on 90 sts.

Lower Border

Knit 3 rows.

Begin Pattern

Rows 1 - 12: K3, *k7, p7; repeat from * to last 3 sts, k3.

Rows 13 - 24: K3, *p7, k7; repeat from * to last 3 sts, k3.

Repeat rows 1 - 24 until work measures ~50" (which will end at Row 12).

Top Border

Knit 3 rows.

Bind off as if to knit.

FINISHING

Weave in ends.

ABBREVIATIONS

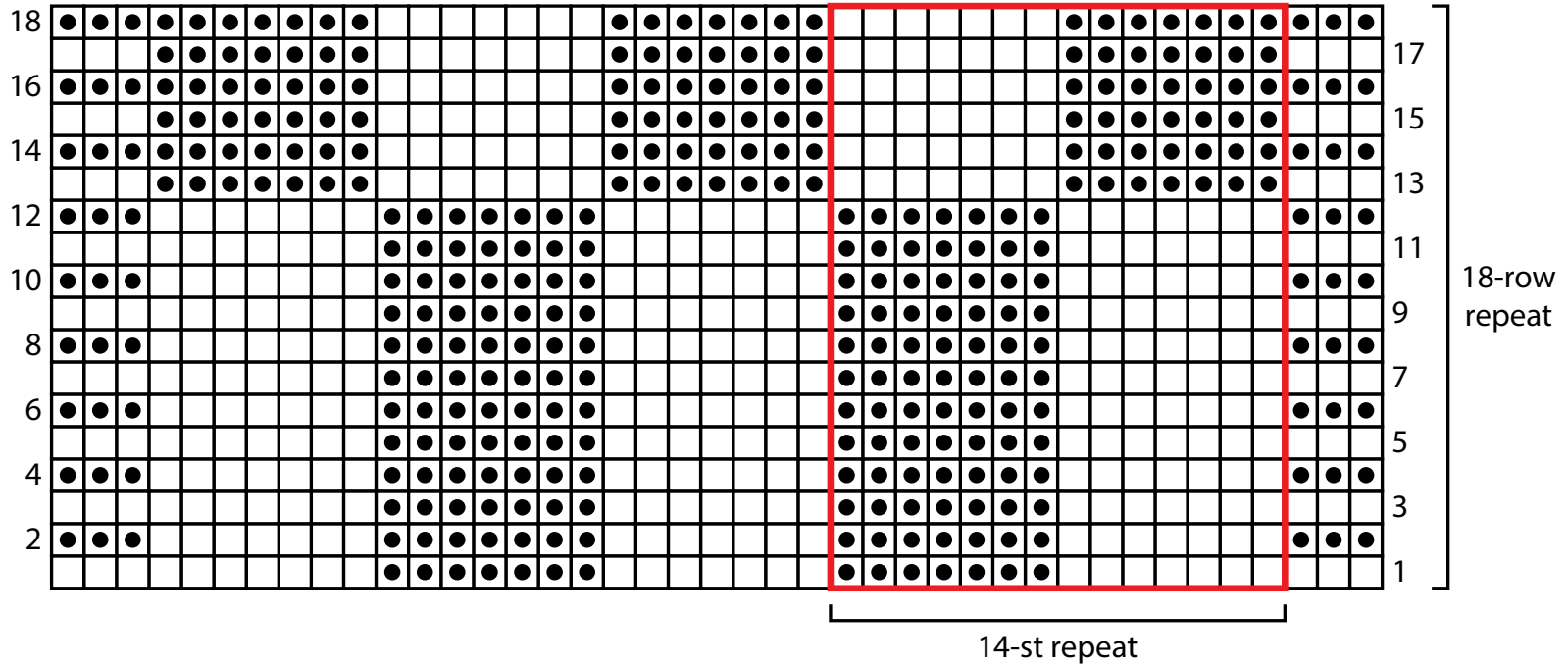
k = knit; **p** = purl; **st(s)** = stitch(es);
* = repeat whatever follows the * as indicated.



See chart on next page



2015 - 2018
WOMEN'S CHOICE AWARD®
AMERICA'S MOST RECOMMENDED
YARN BRAND



Key

- knit on RS, purl on WS
- purl on RS, knit on WS
- repeat