



KNIT
SKILL LEVEL
INTERMEDIATE

Designed by Melissa Leapman



What you will need:

RED HEART® With Love®: 7 skeins
1101 Eggshell (49 oz)

Susan Bates® Circular Knitting
Needles: 5.5mm [US 9] and 6mm
[US 10], 29" long

Yarn needle

GAUGE: 16 sts = 4" [10 cm]; 22
rows = 4" [10 cm] in Lace Pattern
with larger size needles. **CHECK**
YOUR GAUGE. Use any size
needle to obtain the gauge.



RED HEART® With
Love®, Art. E400
available in solid color
7oz (198g), 370 yd (338m) and
multicolor 5oz (141g), 230 yd
(211m) skeins.

Delicate Diamonds Throw

These diamonds really can be a girl's best friend, especially when she can relax with something as warm and cozy as this throw.

This classic knit pattern is wonderful for any room setting and is perfect to give as a wedding or anniversary gift!

Throw measures 49" wide x 70" long [124 cm x 178 cm] including border.

NOTE

Throw is worked back and forth in rows on circular needles, do not join.

Special Abbreviations

M1 = Make 1 (Inc) – Lift strand between needles to left-hand needle and work strand through the back loop, twisting it to prevent a hole, [knit or purl as indicated by pattern st].

K2TOG = Knit 2 sts together.

SSK = Slip next two stitches knitwise to right needle, insert point of left needle through front of sts, knit these sts together through back loop

YO = Yarn over.

PSSO = Pass slipped stitch over.

TIPS & HINTS

Join a new ball of yarn when there are approximately 6" [15 cm] of yarn left from the old ball, also leaving a 6" [15 cm] tail of yarn with the joined yarn. Weave these ends in neatly on the wrong side of the fabric in a zig-zag pattern for a few inches, and then trim off excess.

Lace Pattern (multiple of 14 + 3 sts)

Row 1 (Right Side): K2, *yo, ssk, k9, k2tog, yo, k1. Repeat from * across, ending row with k1.

Row 2 (Wrong Side): P4, *k9, p5. Repeat from * across, ending row with k9, p4.

Row 3: K3, *yo, ssk, k7, k2tog, yo, k3. Repeat from * across.

Row 4: P5, *k7, p7. Repeat from * across, ending row with k7, p5.

Row 5: K4, *yo, ssk, k5, k2tog, yo, k5. Repeat from * across, ending row with yo, ssk, k5, k2tog, yo, k4.

Row 6: P6, *k5, p9. Repeat from * across, ending row with k5, p6.

Row 7: K5, *yo, ssk, k3, k2tog, yo, k7. Repeat from * across, ending row with yo, ssk, k3, k2tog, yo, k5.

Row 8: P7, *k3, p11. Repeat from * across, ending row with k3, p7.

Row 9: K6, *yo, ssk, k1, k2tog, yo, k9. Repeat from * across, ending row with yo, ssk, k1, k2tog, yo, k6.

Row 10: P8, *k1, p13. Repeat from * across, ending row with k1, p8.

Row 11: K7, *yo, slip next st, k2tog, pssso, yo, k11. Repeat from * across, ending row with yo, slip next st, k2tog, pssso, yo, k7.

Row 12: K7, *p3, k11. Repeat from * across, ending row with p3, k7.

Row 13: K6, *k2tog, yo, k1, yo, ssk, k9. Repeat from * across, ending row with k2tog, yo, k1, yo, ssk, k6.

Row 14: K6, *p5, k9. Repeat from * across, ending row with p5, k6.

Row 15: K5, *k2tog, yo, k3, yo, ssk, k7. Repeat from * across, ending row with k2tog, yo, k3, yo, ssk, k5.

Row 16: K5, *p7, k7. Repeat from * across, ending row with p7, k5.

Row 17: K4, *k2tog, yo, k5, yo, ssk, k5.

Repeat from * across, ending row with k2tog, yo, k5, yo, ssk, k4.

Row 18: K4, *p9, k5. Repeat from * across, ending row with p9, k4.

Row 19: K3, *k2tog, yo, k7, yo, ssk, k3, Repeat from * across.

Row 20: K3, *p11, k3. Repeat from * across.

Row 21: K2, *k2tog, yo, k9, yo, ssk, k1.

Repeat from * across, ending row with k1.

Row 22: K2, *p13, k1. Repeat from * across, ending row with k1.

Row 23: K1, k2tog, yo, *k11, yo, slip next st, k2tog, pssso, yo. Repeat from * across, ending row with k11, yo, ssk, k1.

Continued...

SHOP KIT

Row 24: P3, *k11, p3. Repeat from * across.
Repeat rows 1-24 for Lace Pattern.

THROW

With larger needles, cast on 185 sts. Work in Lace Pattern until piece measures 65" [165 cm] from beginning, ending after Row 11 or 23 of Lace Pattern. Bind off all sts.

BORDER

With smaller size needles and right side facing, pick up and knit 307 sts along one long side of throw.

Row 1 (Wrong Side): P2, *k1, p1. Repeat from * across until 3 sts remain in row, ending row with k1, p2.

Row 2 (Right Side): K2, m1 knitwise, *p1, k1. Repeat from * across until 2 sts remain in row, ending row with m1 knitwise, k2.

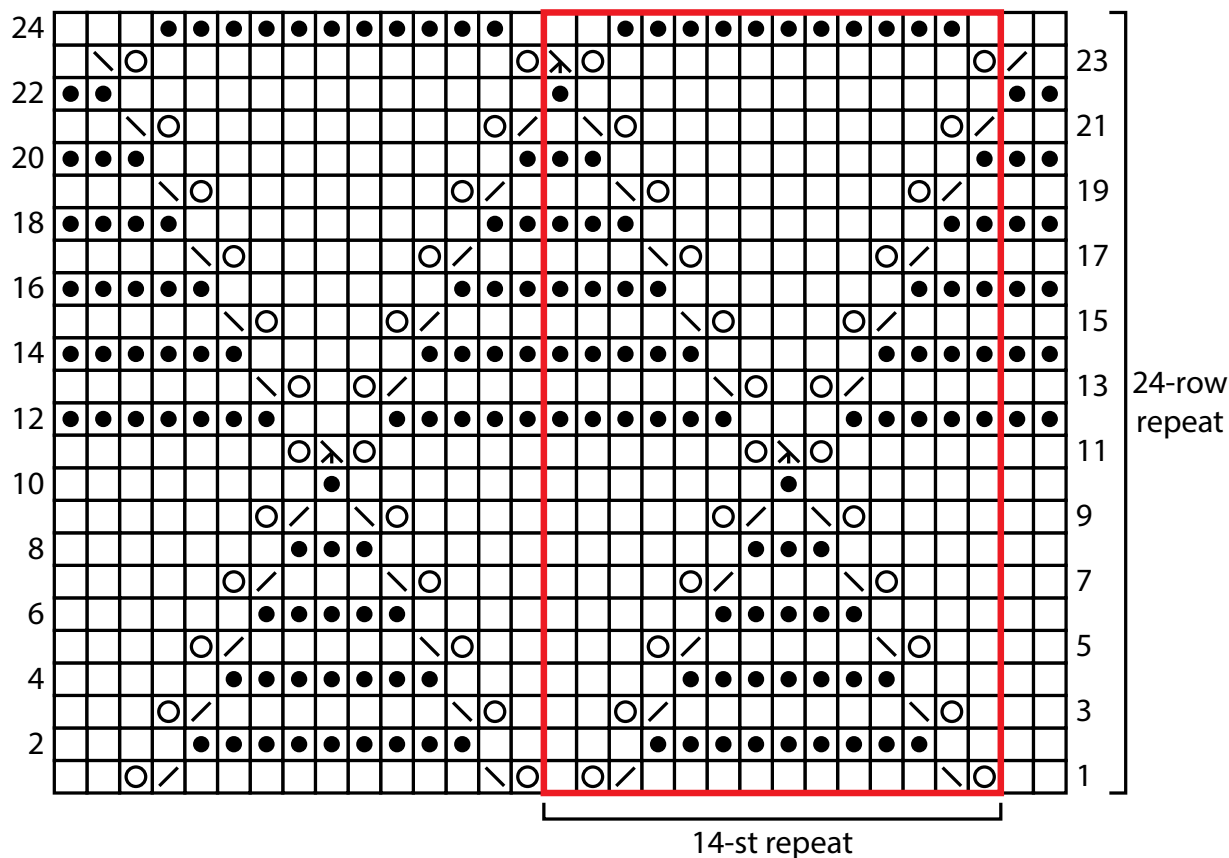
Row 3: P3, *k1, p1. Repeat from * across until 4 sts remain in row, ending row with k1, p3.

Row 4: K2, m1 purlwise, *k1, p1. Repeat from * across, until 3 sts remain in row, ending row with k1, m1 purlwise, k2.
Repeat Rows 1-4 once more. Then work Row 1 and bind off. Repeat for remaining three sides of Throw, picking up 183 sts along each shorter side. With right side facing and using mattress stitch, sew mitered corners of border.

ABBREVIATIONS

K = knit; **mm** = millimeters; **P** = Purl; **pat(s)** = pattern(s) **st** = slip stitch; **st(s)** = stitch(es); **St st** = Stockinette stitch; **tog** = together; **yo** = yarn over needle; **[]** = work directions in brackets the number of times specified; ***** or ****** = repeat whatever follows the * or ** as indicated.

Lace Pattern



Key

- ☐ knit on RS, purl on WS
- ☒ purl on RS, knit on WS
- ☐ yarn over
- ☒ repeat
- ☒ k2tog (knit 2 stitches together)
- ☒ ssk (slip, slip, knit)
- ☒ sk2p (slip, k2tog, pss)