



KNIT
SKILL LEVEL
INTERMEDIATE

Designed by Edie Eckman

What you will need:

RED HEART® Soft®: 1 ball 9388
Wheat

Susan Bates® Knitting Needles:
5 mm [US 8]

Cable needle, yarn needle

GAUGE: 19 sts = 4" (10 cm); 23 rows = 4" (10 cm) in Stockinette st (knit on right side, purl on wrong side). **CHECK YOUR GAUGE.** Use any size needles to obtain the gauge.



RED HEART® Soft®,
Art. E728 available in
5 oz (141 g), 256 yd
(234 m) balls

SHOP KIT



XO Panels and Ensign's Braid Square

For Knit Your Cables Afghan

Use this square for making the one-color Knit Your Cables Afghan. Follow our blog by searching RHK0502-019189M for hints on knitting each square of this afghan. Then, if you feel creative, use the stitch pattern for your own unique knit project.

Square measures 10" (25.5 cm) square.

Special Abbreviations

2/2 LC (2 over 2 Left Cross): Slip next 2 sts to cable needle and hold in front, k2, k2 from cable needle.

2/2 RC (2 over 2 Right Cross): Slip next 2 sts to cable needle and hold in back, k2, k2 from cable needle.

3/1 LPC (3 over 1 Left Purl Cross): Slip next 3 sts to cable needle and hold in front, p1, k3 from cable needle.

3/1 RPC (3 over 1 Right Purl Cross): Slip next st to cable needle and hold in back, k3, p1 from cable needle.

3/3 LC (3 over 3 Left Cross): Slip next 3 sts to cable needle and hold in front, k3, k3 from cable needle.

3/3 RC (3 over 3 Right Cross): Slip next 3 sts to cable needle and hold in back, k3, k3 from cable needle.

Special Technique

Cable Cast On = Place a slip knot on left needle, insert right needle into stitch on left needle as if to knit, pull loop through and place on left needle (2 sts on left needle), *insert needle between first 2 stitches on left needle, pull loop through and place on left needle; repeat from * until the required number of stitches are on the left needle.

SQUARE G

Cable cast on 54 sts.

Set-Up Row 1 (right side): P5, k8, p6, k6, p4, k6, p6, k8, p5.

Set-Up Row 2: K5, p8, k6, p6, k4, p6, k6, p8, k5.

Row 1: P5, 2/2 RC, 2/2 LC, p6, 3/3 RC, p4, 3/3 LC, p6, 2/2 RC, 2/2 LC, p5.

Rows 2, 12 and 14: K5, p8, k6, p6, k4, p6, k6, p8, k5.

Rows 3 and 15: P5, k8, p5, 3/1 RPC, 3/1 LPC, p2, 3/1 RPC, 3/1 LPC, p5, k8, p5.

Rows 4, 10, 16 and 22: K5, p8, k5, [p3, k2] 3 times, p3, k5, p8, k5.

Rows 5 and 17: P5, k8, p4, [3/1 RPC, p2, 3/1 LPC] 2 times, p4, k8, p5.

Rows 6, 8, 18 and 20: K5, p8, k4, [p3, k4, p3] 2 times, k4, p8, k5.

Rows 7: P5, 2/2 LC, 2/2 RC, p4, k3, p4, 3/3 RC, p4, k3, p4, 2/2 LC, 2/2 RC, p5.

Rows 9 and 21: P5, k8, p4, [3/1 LPC, p2, 3/1 RPC] 2 times, p4, k8, p5.

Rows 11 and 23: P5, k8, p5, 3/1 LPC, 3/1 RPC, p2, 3/1 LPC, 3/1 RPC, p5, k8, p5.

Row 13: P5, 2/2 LC, 2/2 RC, p6, 3/3 LC, p4, 3/3 RC, p6, 2/2 LC, 2/2 RC, p5.

Row 19: P5, 2/2 RC, 2/2 LC, p4, k3, p4, 3/3 LC, p4, k3, p4, 2/2 RC, 2/2 LC, p5.

Row 24: Repeat Row 2.

Repeat Rows 1-24 one more time, then repeat Rows 1-14 once more. Bind off in pattern on right side.

Finishing

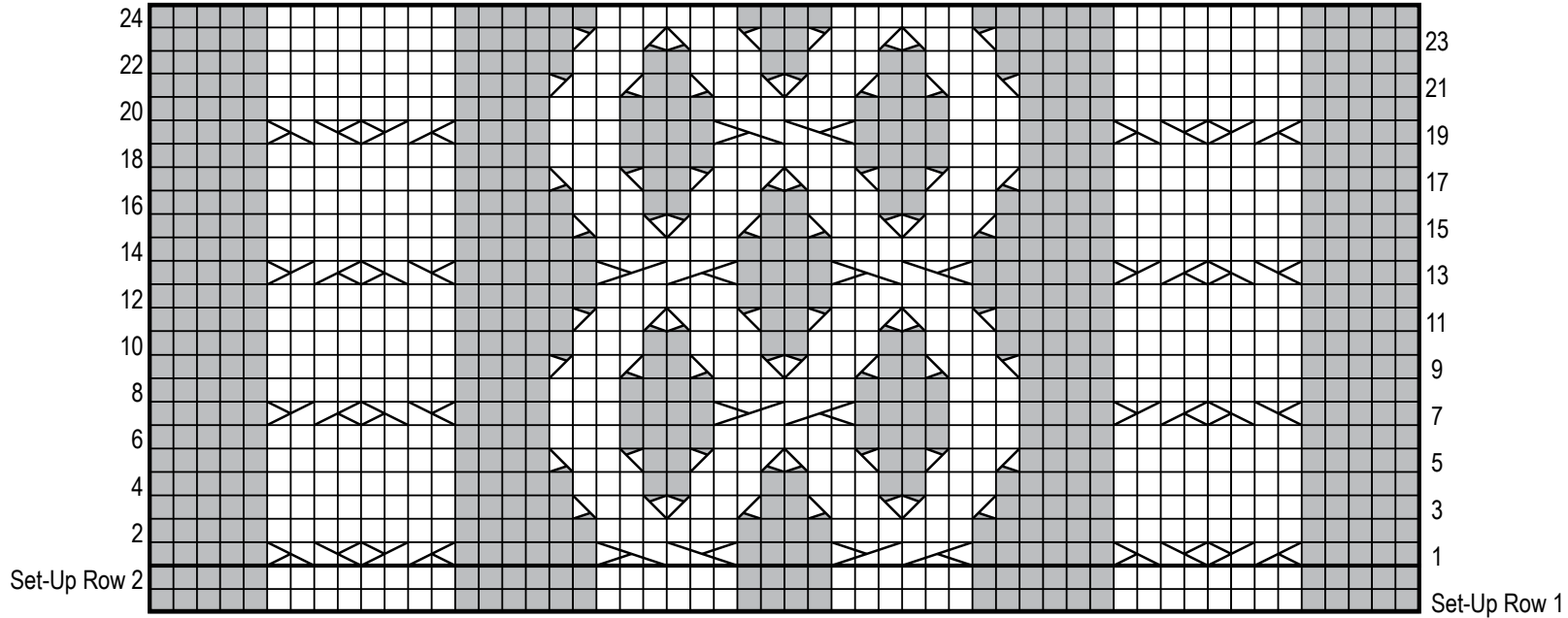
Block piece to approximately 10" (25.5 cm) square.

Weave in ends.

ABBREVIATIONS

k = knit; **p** = purl; **st(s)** = stitch(es); **[]** = work directions in brackets the number of times specified; * = repeat whatever follows the * as indicated.

See chart and key on next page



KEY

- k on RS, p on WS
- p on RS, k on WS
- k tbl
- 1/1 RC
- 1/1 LC
- 2/1 LPC
- 2/1 RPC
- 1/2 LPC
- 1/2 RPC
- 2/2 RC
- 2/2 LC
- 3/1 LPC
- 3/1 RPC
- 3/3 RC
- 3/3 LC