



KNIT
SKILL LEVEL
INTERMEDIATE

Designed by Edie Eckman



Seed Stitch Diamonds Square

For Knit Your Cables Afghan

Use this square for making the one-color Knit Your Cables Afghan. Follow our blog by searching RHK0502-019189M for hints on knitting each square of this afghan. Then, if you feel creative, use the stitch pattern for your own unique knit project.

What you will need:

RED HEART® Soft®: 1 ball 9388
Wheat

Susan Bates® Knitting Needles:
5 mm [US 8]

Cable needle, yarn needle

GAUGE: 19 sts = 4" (10 cm); 23 rows = 4" (10 cm) in Stockinette st (knit on right side, purl on wrong side). **CHECK YOUR GAUGE.** Use any size needles to obtain the gauge.



RED HEART® Soft®,
Art. E728 available in
5 oz (141 g), 256 yd
(234 m) balls

Square measures 10" (25.5 cm) square.

Special Abbreviations

2/1 LPC (2 over 1 Left Purl Cross): Slip next 2 sts to cable needle and hold in front, p1, k2 from cable needle.

2/1 RPC (2 over 1 Right Purl Cross): Slip next st to cable needle and hold in back, k2, p1 from cable needle.

2/2 RC (2 over 2 Right Cross): Slip next 2 sts to cable needle and hold in back, k2, k2 from cable needle.

SQUARE J

Long-tail cast on 50 sts.

Rows 1 and 3 (wrong side): K3, *k4, p4, k4, p2, [k1, p1] 3 times, p2; repeat from * once, k3.

Row 2: P3, *k2, [p1, k1] 3 times, k2, p4, 2/2 RC, p4; repeat from * once, p3.

Row 4: P3, *2/1 LPC, [k1, p1] 2 times, 2/1 RPC, p3, 2/1 RPC, 2/1 LPC, p3; repeat from * once, p3.

Row 5: K3, *k3, p2, k1, p3, k4, p3, k1, p1, k1, p2, k1; repeat from * once, k3.

Row 6: P3, *p1, 2/1 LPC, p1, k1, 2/1 RPC, p3, 2/1 RPC, p1, k1, 2/1 LPC, p2; repeat from * once, p3.

Row 7: K3, *k2, p3, k1, p1, k1, p2, k4, p2, k1, p3, k2; repeat from * once, k3.

Row 8: P3, *p2, 2/1 LPC, 2/1 RPC, p3, 2/1 RPC, [k1, p1] 2 times, 2/1 LPC, p1; repeat from * once, p3.

Row 9: K3, *k1, p2, [k1, p1] 3 times, p2, k4, p4, k3; repeat from * once, k3.

Row 10: P3, *p3, 2/2 RC, p4, k2, [p1, k1] 3 times, k2, p1; repeat from * once, p3.

Row 11: K3, *k1, p2, [k1, p1] 3 times, p2, k4, p4, k3; repeat from * once, k3.

Row 12: P3, *p2, 2/1 RPC, 2/1 LPC, p3, 2/1 LPC, [k1, p1] 2 times, 2/1 RPC, p1; repeat from * once, p3.

Row 13: K3, *k2, p3, k1, p1, k1, p2, k4, p2, k1, p3, k2; repeat from * once, k3.

Row 14: P3, *p1, 2/1 RPC, p1, k1, 2/1 LPC, p3, 2/1 LPC, p1, k1, 2/1 RPC, p2; repeat from * once, p3.

Row 15: K3, *k3, p2, k1, p3, k4, p3, k1, p1, k1, p2, k1; repeat from * once, k3.

Row 16: P3, *2/1 RPC, [k1, p1] 2 times, 2/1 LPC, p3, 2/1 LPC, 2/1 RPC, p3; repeat from * once, p3.

Repeat Rows 1-16 two more times, then work Rows 1-11 once more. Bind off in pattern on right side.

Finishing

Block piece to approximately 10" (25.5 cm) square.

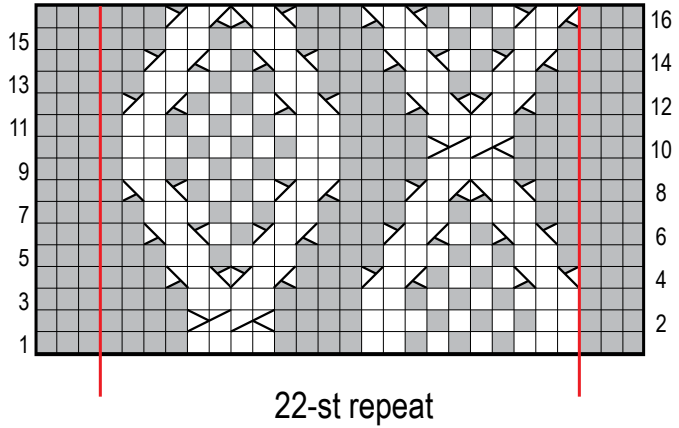
Weave in ends.

ABBREVIATIONS

k = knit; p = purl; st(s) = stitch(es); [] = work directions in brackets the number of times specified; * = repeat whatever follows the * as indicated.

See chart and key on next page

SHOP KIT



KEY

- k on RS, p on WS
- p on RS, k on WS
- ⊠ k tbl
- ▤ 1/1 RC
- ▥ 1/1 LC
- ▦ 2/1 LPC
- ▧ 2/1 RPC
- ▨ 1/2 LPC
- ▩ 1/2 RPC
- 2/2 RC
- 2/2 LC
- ▬ 3/1 LPC
- ▭ 3/1 RPC
- ▮ 3/3 RC
- ▯ 3/3 LC