



KNIT
SKILL LEVEL
INTERMEDIATE

Designed by Edie Eckman



Lattice Cables Square

For Knit Your Cables Afghan

Use this square for making the one-color Knit Your Cables Afghan. Follow our blog by searching RHK0502-019189M for hints on knitting each square of this afghan. Then, if you feel creative, use the stitch pattern for your own unique knit project.

What you will need:
RED HEART® Soft®: 1 ball 9388 Wheat
Susan Bates® Knitting Needles: 5 mm [US 8]
Cable needle, yarn needle
GAUGE: 19 sts = 4" (10 cm); 23 rows = 4" (10 cm) in Stockinette st (knit on right side, purl on wrong side). **CHECK YOUR GAUGE.** Use any size needles to obtain the gauge.



RED HEART® Soft®, Art. E728 available in 5 oz (141 g), 256 yd (234 m) balls

Square measures 10" (25.5 cm) square

Special Abbreviations

2/2 LC (2 over 2 Left Cross): Slip next 2 sts to cable needle and hold in front, k2, k2 from cable needle.

2/2 RC (2 over 2 Right Cross): Slip next 2 sts to cable needle and hold in back, k2, k2 from cable needle.

2/2 LPC (2 over 2 Left Purl Cross): Slip next 2 sts to cable needle and hold in front, p2, k2 from cable needle.

2/2 RPC (2 over 2 Right Purl Cross): Slip next 2 sts to cable needle and hold in back, k2, p2 from cable needle.

SQUARE K

Long-tail cast on 68 sts.

Rows 1 and 3 (wrong side): K1, *k2, p4; repeat from * to last st, k1.

Row 2: P1, *2/2 LC, p2; repeat from * to last st, p1.

Row 4: P3, *k2, 2/2 RPC; repeat from * to last 5 sts, k4, p1.

Rows 5 and 7: K1, *p4, k2; repeat from * to last st, k1.

Row 6: P1, *p2, 2/2 RC; repeat from * to last st, p1.

Row 8: P1, k4, *2/2 LPC, k2; repeat from * to last 3 sts, p3.

Repeat Rows 1-8 seven more times. Repeat Row 1 once more. Bind off in pattern on right side.

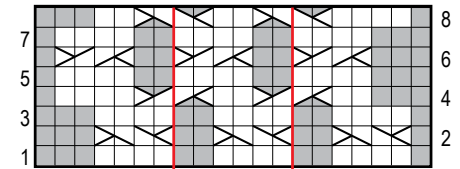
Finishing

Block piece to approximately 10" (25.5 cm) square.

Weave in ends.

ABBREVIATIONS

k = knit; **p** = purl; **st(s)** = stitch(es); * = repeat whatever follows the * as indicated.



6-st repeat

KEY

- k on RS, p on WS
- p on RS, k on WS
- k tbl
- 1/1 RC
- 1/1 LC
- 2/1 LPC
- 2/1 RPC
- 1/2 LPC
- 1/2 RPC
- 2/2 RC
- 2/2 LC
- 2/2 RPC
- 2/2 LPC
- 3/1 LPC
- 3/1 RPC
- 3/3 RC
- 3/3 LC

SHOP KIT