



KNIT  
SKILL LEVEL  
INTERMEDIATE

*Designed by Jessie Rayot*

## What you will need:

**RED HEART® Super Saver®:**  
3 skeins 3991 Earthy **A**, and 1 skein each of 726 Coral **B**, 336 Warm Brown **C**, 376 Burgundy **D**, 369 Mushroom **E**, and 506 Pool **F**

### Susan Bates® Knitting

**Needles:** 5mm [US 8] circular needle (36" [91.5 cm] long or longer) and 5mm [US 8] straight needles (optional)

6 stitch holders, yarn needle

**GAUGE:** 18 sts = 4" [10 cm];  
24 rows = 4" [10 cm] in Stockinette stitch (knit on right side, purl on wrong side). **CHECK YOUR GAUGE.**

**Use any size needles to obtain the gauge.**



**RED HEART® Super Saver®, Art. E300** available

in solid color 7 oz (198 g), 364 yd (333 m); multicolor, heather and print 5 oz (141 g), 236 yd (215 m), flecks 5 oz (141g), 260 yds (238 m) skeins

**SHOP KIT**



# Caring Comfort Knit Throw

Create a throw that gives comfort to those you love. This pattern starts with instructions for the Basket Weave stitch and each of the five different leaf squares. But you actually begin knitting at the cast on where the "Throw" instructions begin on page 3.

**Throw measures about 45 x 55" [114.5 x 139.5 cm].**

## SPECIAL TECHNIQUE

**Technique Notes:** Pieces in this throw are joined to previous pieces at the end of wrong side rows. All rows of the piece being joined to must begin with a slip stitch. This technique will not work if the rows do not begin with a slip stitch. Beginning rows with a slip stitch leaves loops on the edge of the piece spanning every 2 rows.

**Join As You Go =** Purl all stitches of the next wrong side row to the last stitch, slip the last stitch as if to purl, purl into the next loop on the edge of the piece you are joining to, pass the slipped stitch over the purl stitch.

## PATTERN STITCHES

### Basket Weave (multiple of 10 sts + 2 sts)

**Rows 1-7 (right side):** Slip 1 as if to knit, \*k5, p5; repeat from \* to last st, purl last st.

**Rows 8-14:** Slip 1 as if to knit, \*p5, k5; repeat from \* to last st, purl last st.

Repeat Rows 1-14 for Basket Weave pattern.

### Leaf I (worked over 39 sts)

**Row 1 (right side):** Slip 1 as if to knit, p37, k1.

**Row 2 and all wrong side rows:** Slip 1 as if to purl, p37, slip last st as if to purl, purl into next loop on edge of previous piece, pass the slipped st over the purl st and off the needle.

**Row 3:** Slip 1 as if to knit, k38.

**Rows 5 and 7:** Slip 1 as if to knit, k17, k2tog, yo, k19.

**Row 9:** Slip 1 as if to knit, k10, [k2tog, yo] 3 times, k1, k2tog, yo, k1, [k2tog, yo] 3 times, k12.

**Row 11:** Slip 1 as if to knit, k6, [k2tog, yo] twice, k5, [k2tog, yo] 3 times, k5, [k2tog, yo] twice, k8.

**Row 13:** Slip 1 as if to knit, k5, k2tog, yo, k10, k2tog, yo, k10, k2tog, yo, k7.

continued...



2015 - 2017  
**WOMEN'S CHOICE AWARD®**  
AMERICA'S MOST RECOMMENDED  
YARN BRAND



**Row 15:** Slip 1 as if to knit, k4, k2tog, yo, k10, [k2tog, yo] twice, k10, k2tog, yo, k6.

**Row 17:** Slip 1 as if to knit, k3, k2tog, yo, k10, [k2tog, yo] 3 times, k10, k2tog, yo, k5.

**Row 19:** Slip 1 as if to knit, k3, k2tog, yo, k9, [k2tog, yo, k1] twice, k2tog, yo, k9, k2tog, yo, k5.

**Row 21:** Slip 1 as if to knit, k3, k2tog, yo, k8, [k2tog, yo, k2] twice, k2tog, yo, k8, k2tog, yo, k5.

**Row 23:** Slip 1 as if to knit, k3, k2tog, yo, k7, [k2tog, yo, k3] twice, k2tog, yo, k7, k2tog, yo, k5.

**Row 25:** Slip 1 as if to knit, k4, k2tog, yo, k5, [k2tog, yo, k4] twice, k2tog, yo, k5, k2tog, yo, k6.

**Row 27:** Slip 1 as if to knit, k5, [k2tog, yo, k4] 4 times, k2tog, yo, k7.

**Row 29:** Slip 1 as if to knit, k7, k2tog, yo, k1, [k2tog, yo, k5] twice, k2tog, yo, k1, k2tog, yo, k9.

**Row 31:** Slip 1 as if to knit, k8, [k2tog, yo, k7] twice, k2tog, yo, k10.

**Row 33:** Slip 1 as if to knit, k9, [k2tog, yo, k6] twice, k2tog, yo, k11.

**Row 35:** Slip 1 as if to knit, k10, [k2tog, yo, k5] twice, k2tog, yo, k12.

**Row 37:** Slip 1 as if to knit, k12, [k2tog, yo, k3] twice, k2tog, yo, k14.

**Row 39:** Slip 1 as if to knit, k13, [k2tog, yo, k2] twice, k2tog, yo, k15.

**Rows 41 and 43:** Slip 1 as if to knit, k14, [k2tog, yo, k1] twice, k2tog, yo, k16.

**Row 45:** Slip 1 as if to knit, k15, k2tog, yo, k2, k2tog, yo, k17.

**Row 47:** Slip 1 as if to knit, k16, [k2tog, yo] twice, k18.

**Row 49:** Slip 1 as if to knit, k17, k2tog, yo, k19.

**Rows 51 and 53:** Slip 1 as if to knit, k38.

**Row 54 (wrong side):** Repeat Row 2.

## Leaf II (worked over 39 sts)

**Row 1 (right side):** Slip 1 as if to knit, p37, k1.

**Row 2 and all wrong side rows:** Slip 1 as if to purl, p37, slip last st as if to purl, purl into next loop on edge of previous piece, pass the slipped st over the purl st and off the needle.

**Row 3:** Slip 1 as if to knit, k38.

**Row 5:** Slip 1 as if to knit, k1, [k2tog, yo] twice, k33.

**Row 7:** Slip 1 as if to knit, k3, [k2tog, yo] twice, k8, [k2tog, yo] 3 times, k17.

**Row 9:** Slip 1 as if to knit, k5, [k2tog, yo] twice, k4, [k2tog, yo] twice, k3, [k2tog, yo] twice, k14.

**Row 11:** Slip 1 as if to knit, k8, [k2tog, yo] 3 times, k10, k2tog, yo, k12.

**Row 13:** Slip 1 as if to knit, k5, [k2tog, yo] 4 times, k12, k2tog, yo, k11.

**Row 15:** Slip 1 as if to knit, k4, k2tog, yo, k6, k2tog, yo, k12, k2tog, yo, k10.

**Row 17:** Slip 1 as if to knit, k3, k2tog, yo, k9, k2tog, yo, k11, k2tog, yo, k9.

**Row 19:** Slip 1 as if to knit, k2, k2tog, yo, k12, k2tog, yo, k9, k2tog, yo, k9.

**Row 21:** Slip 1 as if to knit, k2, k2tog, yo, k13, k2tog, yo, k9, k2tog, yo, k8.

**Row 23:** Slip 1 as if to knit, k2, k2tog, yo, k14, k2tog, yo, k8, k2tog, yo, k8.

**Row 25:** Slip 1 as if to knit, k2, k2tog, yo, k15, k2tog, yo, k7, k2tog, yo, k8.

**Row 27:** Slip 1 as if to knit, k2, k2tog, yo, k16, k2tog, yo, k7, k2tog, yo, k7.

**Row 29:** Slip 1 as if to knit, k3, k2tog, yo, k16, k2tog, yo, k6, k2tog, yo, k7.

**Row 31:** Slip 1 as if to knit, k4, k2tog, yo, k16, k2tog, yo, k5, k2tog, yo, k7.

**Row 33:** Slip 1 as if to knit, k5, k2tog, yo, k16, k2tog, yo, k5, k2tog, yo, k6.

**Row 35:** Slip 1 as if to knit, k6, k2tog, yo, k16, k2tog, yo, k4, k2tog, yo, k6.

**Row 37:** Slip 1 as if to knit, k7, k2tog, yo, k16, k2tog, yo, k4, k2tog, yo, k5.

**Row 39:** Slip 1 as if to knit, k9, k2tog, yo, k15, k2tog, yo, k3, k2tog, yo, k5.

**Row 41:** Slip 1 as if to knit, k11, [k2tog, yo] twice, k12, k2tog, yo, k2, k2tog, yo, k5.

**Row 43:** Slip 1 as if to knit, k14, [k2tog, yo] twice, k10, k2tog, yo, k1, k2tog, yo, k5.

**Row 45:** Slip 1 as if to knit, k17, [k2tog, yo] twice, k10, k2tog, yo, k5.

**Row 47:** Slip 1 as if to knit, k21, [k2tog, yo] 3 times, k5, k2tog, yo, k4.

**Row 49:** Slip 1 as if to knit, k26, [k2tog, yo] 4 times, k4.

**Rows 51 and 53:** Slip 1 as if to knit, k38.

**Row 54 (wrong side):** Repeat Row 2.

## Leaf III (worked over 39 sts)

**Row 1 (right side):** Slip 1 as if to knit, p37, k1.

**Row 2 and all wrong side rows:** Slip 1 as if to purl, p37, slip last st as if to purl, purl into next loop on edge of previous piece, pass the slipped st over the purl st and off the needle.

**Row 3:** Slip 1 as if to knit, k38.

**Rows 5 and 7:** Slip 1 as if to knit, k17, k2tog, yo, k19.

**Row 9:** Slip 1 as if to knit, k9, [k2tog, yo] 9 times, k11.

**Row 11:** Slip 1 as if to knit, k8, k2tog, yo, k6, [k2tog, yo] twice, k6, k2tog, yo, k10.

**Row 13:** Slip 1 as if to knit, k7, k2tog, yo, k5, [k2tog, yo, k1] twice, k2tog, yo, k5, k2tog, yo, k9.

**Row 15:** Slip 1 as if to knit, k6, k2tog, yo, k4, [k2tog, yo, k3] twice, k2tog, yo, k4, k2tog, yo, k8.

**Row 17:** Slip 1 as if to knit, k5, k2tog, yo, k3, [k2tog, yo, k5] twice, k2tog, yo, k3, k2tog, yo, k7.

**Row 19:** Slip 1 as if to knit, k4, k2tog, yo, k3, [k2tog, yo, k6] twice, k2tog, yo, k3, k2tog, yo, k6.

**Row 21:** Slip 1 as if to knit, k4, k2tog, yo, k2, k2tog, yo, k5, [k2tog, yo] 3 times, k5, k2tog, yo, k2, k2tog, yo, k6.

**Row 23:** Slip 1 as if to knit, k3, k2tog, yo, k9, [k2tog, yo, k1] twice, k2tog, yo, k9, k2tog, yo, k5.

**Row 25:** Slip 1 as if to knit, k3, k2tog, yo, k2, [k2tog, yo] twice, k2, [k2tog, yo, k2] 3 times, [k2tog, yo] twice, k2, k2tog, yo, k5.

**Row 27:** Slip 1 as if to knit, k3, [k2tog, yo, k1, k2tog, yo, k2] twice, [k2tog, yo, k2, k2tog, yo, k1] twice, k2tog, yo, k5.

**Row 29:** Slip 1 as if to knit, k2, \*[k2tog, yo] twice, k4, k2tog, yo, k4, repeat from \* 1 more time, [k2tog, yo] twice, k4.

**Row 31:** Slip 1 as if to knit, k1, k2tog, yo, k8, k2tog, yo, k2, [k2tog, yo] 3 times, k2, k2tog, yo, k8, k2tog, yo, k3.

**Row 33:** Slip 1 as if to knit, k11, [k2tog, yo, k1] 4 times, k2tog, yo, k13.

**Row 35:** Slip 1 as if to knit, k12, [k2tog, yo, k3] twice, k2tog, yo, k14.

**Rows 37 and 39:** Slip 1 as if to knit, k13, [k2tog, yo, k2] twice, k2tog, yo, k15.

**Row 41:** Slip 1 as if to knit, k14, [k2tog, yo, k1] twice, k2tog, yo, k16.

**Rows 43 and 45:** Slip 1 as if to knit, k15, [k2tog, yo] 3 times, k17.

**Row 47:** Slip 1 as if to knit, k16, [k2tog, yo] twice, k18.

**Row 49:** Slip 1 as if to knit, k17, k2tog, yo, k19.

**Rows 51 and 53:** Slip 1 as if to knit, k38.

**Row 54 (wrong side):** Repeat Row 2.

## Leaf IV (worked over 39 sts) Row

**1 (right side):** Slip 1 as if to knit, p37, k1.

continued...



**Row 2 and all wrong side rows:** Slip 1 as if to purl, p37, slip last st as if to purl, purl into next loop on edge of previous piece, pass the slipped st over the purl st and off the needle.

**Row 3:** Slip 1 as if to knit, k38.

**Rows 5 and 7:** Slip 1 as if to knit, k17, k2tog, yo, k19.

**Row 9:** Slip 1 as if to knit, k12, [k2tog, yo] twice, k1, k2tog, yo, k1, [k2tog, yo] twice, k14.

**Row 11:** Slip 1 as if to knit, k9, [k2tog, yo] twice, k3, [k2tog, yo] twice, k3, [k2tog, yo] twice, k11.

**Row 13:** Slip 1 as if to knit, k8, k2tog, yo, k5, [k2tog, yo] 3 times, k5, k2tog, yo, k10.

**Row 15:** Slip 1 as if to knit, k8, k2tog, yo, k3, [k2tog, yo, k2] twice, k2tog, yo, k3, k2tog, yo, k10.

**Row 17:** Slip 1 as if to knit, k8, k2tog, yo, k2, [k2tog, yo, k3] twice, k2tog, yo, k2, k2tog, yo, k10.

**Row 19:** Slip 1 as if to knit, k8, k2tog, yo, k1, [k2tog, yo, k4] twice, k2tog, yo, k1, k2tog, yo, k10.

**Row 21:** Slip 1 as if to knit, k9, k2tog, yo, k4, [k2tog, yo] 3 times, k4, k2tog, yo, k11.

**Row 23:** Slip 1 as if to knit, k9, k2tog, yo, k3, [k2tog, yo, k1] twice, k2tog, yo, k3, k2tog, yo, k11.

**Row 25:** Slip 1 as if to knit, k10, k2tog, yo, k1, [k2tog, yo, k2] twice, k2tog, yo, k1, k2tog, yo, k12.

**Row 27:** Slip 1 as if to knit, k10, [k2tog, yo, k5] twice, k2tog, yo, k12.

**Row 29:** Slip 1 as if to knit, k11, k2tog, yo, k3, [k2tog, yo] twice, k3, k2tog, yo, k13.

**Row 31:** Slip 1 as if to knit, k11, k2tog, yo, k2, [k2tog, yo] 3 times, k2, k2tog, yo, k13.

**Row 33:** Slip 1 as if to knit, k12, [k2tog, yo] twice, k1, k2tog, yo, k1, [k2tog, yo] twice, k14.

**Rows 35 and 37:** Slip 1 as if to knit, k13, [k2tog, yo, k2] twice, k2tog, yo, k15.

**Rows 39 and 41:** Slip 1 as if to knit, k14, [k2tog, yo, k1] twice, k2tog, yo, k16.

**Row 43:** Slip 1 as if to knit, k15, [k2tog, yo] 3 times, k17.

**Row 45:** Slip 1 as if to knit, k15, k2tog, yo, k2, k2tog, yo, k17.

**Row 47:** Slip 1 as if to knit, k16, [k2tog, yo] twice, k18.

**Row 49:** Slip 1 as if to knit, k17, k2tog, yo, k19.

**Rows 51 and 53:** Slip 1 as if to knit, k38.

**Row 54 (wrong side):** Repeat Row 2.

## Leaf V (worked over 39 sts)

**Row 1 (right side):** Slip 1 as if to knit, p37, k1.

**Row 2 and all wrong side rows:** Slip 1 as if to purl, p37, slip last st as if to purl, purl into next loop on edge of previous piece, pass the slipped st over the purl st and off the needle.

**Row 3:** Slip 1 as if to knit, k38.

**Row 5:** Slip 1 as if to knit, k31, [k2tog, yo] twice, k3.

**Row 7:** Slip 1 as if to knit, k15, [k2tog, yo] 3 times, k8, [k2tog, yo] twice, k5.

**Row 9:** Slip 1 as if to knit, k12, [k2tog, yo] twice, k3, [k2tog, yo] twice, k4, [k2tog, yo] twice, k7.

**Row 11:** Slip 1 as if to knit, k10, k2tog, yo, k10, [k2tog, yo] 3 times, k10.

**Row 13:** Slip 1 as if to knit, k9, k2tog, yo, k12, [k2tog, yo] 4 times, k7.

**Row 15:** Slip 1 as if to knit, k8, k2tog, yo, k12, k2tog, yo, k6, k2tog, yo, k6.

**Row 17:** Slip 1 as if to knit, k7, k2tog, yo, k11, k2tog, yo, k9, k2tog, yo, k5.

**Row 19:** Slip 1 as if to knit, k7, k2tog, yo, k9, k2tog, yo, k12, k2tog, yo, k4.

**Row 21:** Slip 1 as if to knit, k6, k2tog, yo, k9, k2tog, yo, k13, k2tog, yo, k4.

**Row 23:** Slip 1 as if to knit, k6, k2tog, yo, k8, k2tog, yo, k14, k2tog, yo, k4.

**Row 25:** Slip 1 as if to knit, k6, k2tog, yo, k7, k2tog, yo, k15, k2tog, yo, k4.

**Row 27:** Slip 1 as if to knit, k5, k2tog, yo, k7, k2tog, yo, k16, k2tog, yo, k4.

**Row 29:** Slip 1 as if to knit, k5, k2tog, yo, k6, k2tog, yo, k16, k2tog, yo, k5.

**Row 31:** Slip 1 as if to knit, k5, k2tog, yo, k5, k2tog, yo, k16, k2tog, yo, k6.

**Row 33:** Slip 1 as if to knit, k4, k2tog, yo, k5, k2tog, yo, k16, k2tog, yo, k7.

**Row 35:** Slip 1 as if to knit, k4, k2tog, yo, k4, k2tog, yo, k16, k2tog, yo, k8.

**Row 37:** Slip 1 as if to knit, k3, k2tog, yo, k4, k2tog, yo, k16, k2tog, yo, k9.

**Row 39:** Slip 1 as if to knit, [k3, k2tog, yo] twice, k15, k2tog, yo, k11.

**Row 41:** Slip 1 as if to knit, k3, k2tog, yo, k2, k2tog, yo, k12, [k2tog, yo] twice, k13.

**Row 43:** Slip 1 as if to knit, k3, k2tog, yo, k1, k2tog, yo, k10, [k2tog, yo] twice, k16.

**Row 45:** Slip 1 as if to knit, k3, k2tog, yo, k10, [k2tog, yo] twice, k19.

**Row 47:** Slip 1 as if to knit, k2, k2tog, yo, k5, [k2tog, yo] 3 times, k23.

**Row 49:** Slip 1 as if to knit, k2, [k2tog, yo] 4 times, k28.

**Rows 51 and 53:** Slip 1 as if to knit, k38.

**Row 54 (wrong side):** Repeat Row 2.

## NOTES

1. Throw is made from 20 squares, knit and joined together as they are knit, with a Basket Weave border along all edges.
2. Squares can be worked following the written instructions or reading the charts. Read right side rows of charts from right to left. Read wrong side rows from left to right.
3. Throw is worked in five steps:
  - a. The lower border is knit first.
  - b. Then the right side border is knit.

- c. A strip of five leaf squares is then knit and joined to the right side border as it is knit. Three more strips of leaf squares are knit and joined to the previous strip as they are knit.

- d. The left side border is then knit and joined to the last strip of leaf squares.

- e. Finally, the top border is knit.

4. A circular needle is needed to work the large number of stitches in the lower border and top border. Work back and forth on circular needle as if working with straight needles. If desired straight needles can be used to work the side borders and strips of squares.
5. When returning stitches from a holder to the needle, hold the work so that the right side is facing. Insert the needle into the stitches on the holder from the left end to the right end, so that you are ready to work a right side row once all the stitches are on the needle.

## THROW

With **A**, cast on 202 sts.

### Lower Border

Beginning with Row 1 of pattern, work in Basket Weave pattern for 26 rows.

### Right Side Border

**Row 1 (right side):** Slip 1 as if to knit, [p5, k5] twice, k2, [place next 39 sts on a separate stitch holder for next square] 4 times, move last 23 sts to a separate stitch holder for left side border—23 sts remain on needle for right side border.

**Row 2:** Slip 1 as if to purl, p6, k5, p5, k5, purl last st.

continued...



**Row 3:** Slip 1 as if to knit, [k5, p5] twice, k2.

**Row 4:** Slip 1 as if to purl, p1, [k5, p5] twice, purl last st.

**Rows 5–8:** Repeat Rows 3 and 4 twice.

**Row 9:** Repeat Row 3.

**Row 10:** Repeat Row 2.

**Row 11:** Slip 1 as if to knit, [p5, k5] twice, k2.

**Rows 12–15:** Repeat Rows 10 and 11 twice.

**Row 16:** Repeat Row 10.

**Rows 17–268:** Repeat Rows 3–16 eighteen times.

**Rows 269 and 270:** Repeat Rows 3 and 4.

Place the 23 right side border sts on a holder.

### First Strip of Squares

With right side facing, return the 39 sts on holder following the right side border to the needle.

Work leaf patterns in the following order, joining to the right side border at the end of wrong side rows as you go:

With **E**, work Leaf I.

With **D**, work Leaf II.

With **C**, work Leaf III.

With **F**, work Leaf IV.

With **B**, work Leaf V.

Place the 39 sts back on holder.

### Second Strip of Squares

With right side facing, return the next 39 sts on holder following the first strip of squares to the needle.

Work leaf patterns in the following order, joining to the first strip at the end of wrong side rows as you go:

With **B**, work Leaf V.

With **E**, work Leaf I.

With **D**, work Leaf II.

With **C**, work Leaf III.

With **F**, work Leaf IV.

Place the 39 sts back on holder.

### Third Strip of Squares

With right side facing, return the next 39 sts on holder following the second strip of squares to the needle.

Work leaf patterns in the following order, joining to the second strip at the end of wrong side rows as you go:

With **F**, work Leaf IV.

With **B**, work Leaf V.

With **E**, work Leaf I.

With **D**, work Leaf II.

With **C**, work Leaf III.

Place the 39 sts back on holder.

### Fourth Strip of Squares

With right side facing, return the next 39 sts on holder following the third strip of squares to the needle.

Work leaf patterns in the following order, joining to the third strip at the end of wrong side rows as you go:

With **C**, work Leaf III.

With **F**, work Leaf IV.

With **B**, work Leaf V.

With **E**, work Leaf I.

With **D**, work Leaf II.

Place the 39 sts back on holder.

### Left Side Border

With right side facing, return the next 23 sts on holder following the fourth strip of squares to the needle.

Work with **A**.

**Row 1 (right side):** Slip 1 as if to knit, k1, [p5, k5] twice, purl last st.

**Row 2:** Slip 1 as if to knit, [p5, k5] twice, p1, slip last st as if to purl, purl into next loop on edge of previous piece, pass the slipped st over the purl st and off the needle.

**Row 3:** Slip 1 as if to knit, k6, p5, k5, p6.

**Row 4:** Slip 1 as if to knit, k5, p5, k5, p6, slip last st as if to purl, purl into next loop on edge of previous piece, pass the slipped st over the purl st and off the needle.

**Rows 5–8:** Repeat Rows 3 and 4 twice.

**Row 9:** Repeat Row 3.

**Row 10:** Repeat Row 2.

**Row 11:** Slip 1 as if to knit, k1, [p5, k5] twice, purl last st.

**Rows 12–15:** Repeat Rows 10 and 11 twice.

**Row 16:** Repeat Row 10.

**Rows 17–268:** Repeat Rows 3–16 eighteen times.

**Rows 269 and 270:** Repeat Rows 3 and 4.

Place the 23 sts back on holder.

### Top Border

Place all sts from holders onto needle.

**Rows 1–5 (right side):** Slip 1 as if to knit, \*k5, p5; repeat from \* to last st, purl last st.

**Rows 6–26:** Beginning with Row 8 of pattern, work in Basket Weave pattern for 21 rows.

Bind off as if to knit.

## FINISHING

Weave in ends. Block throw, as desired.

**ABBREVIATIONS:** **A, B, C** = Color **A**, Color **B**, Color **C** etc; k = knit; k2tog = knit next 2 sts together; p = purl; st(s) = stitch(es); yo = yarn over; [ ] = work directions in brackets the number of times specified; \* = repeat whatever follows the \* as indicated.

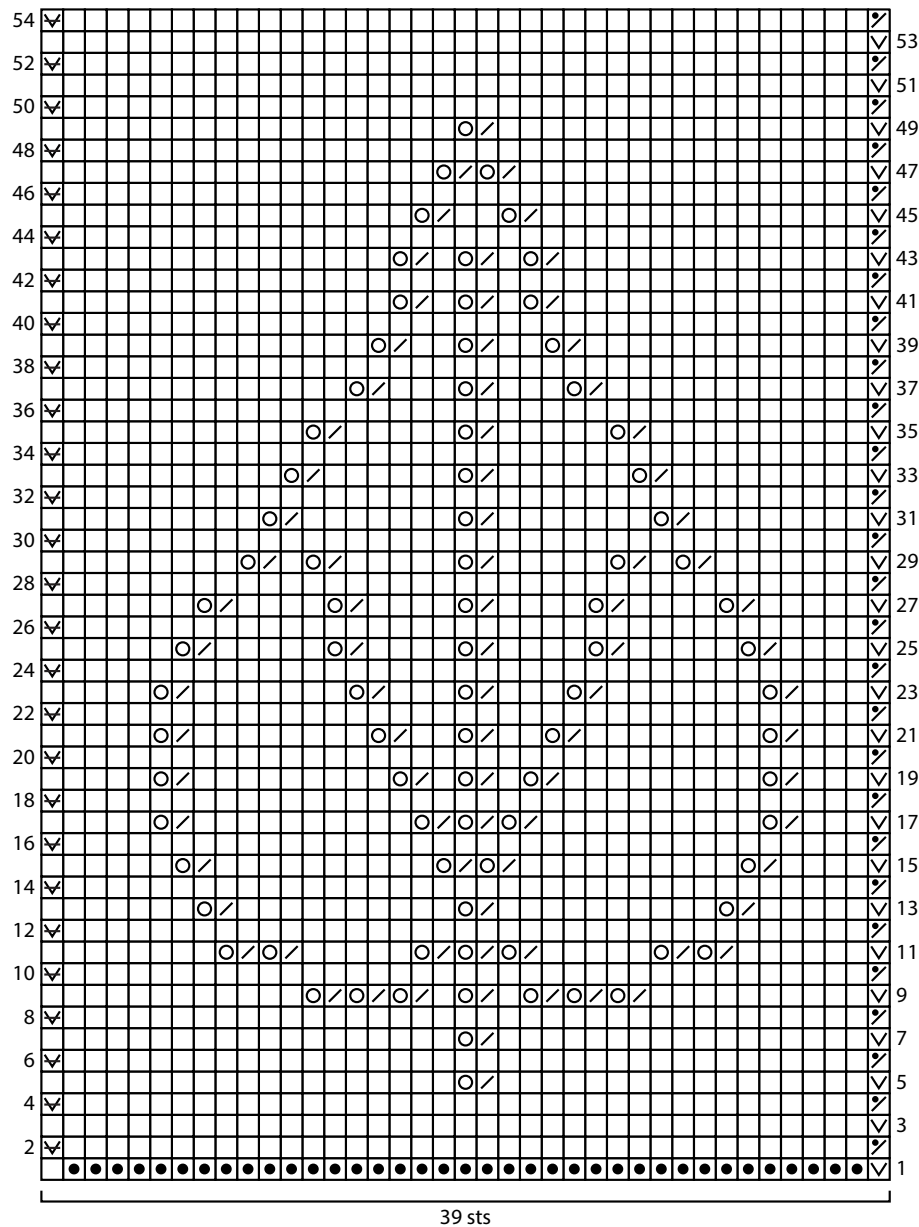
*See charts on next 4 pages*

*See Key on page 7*

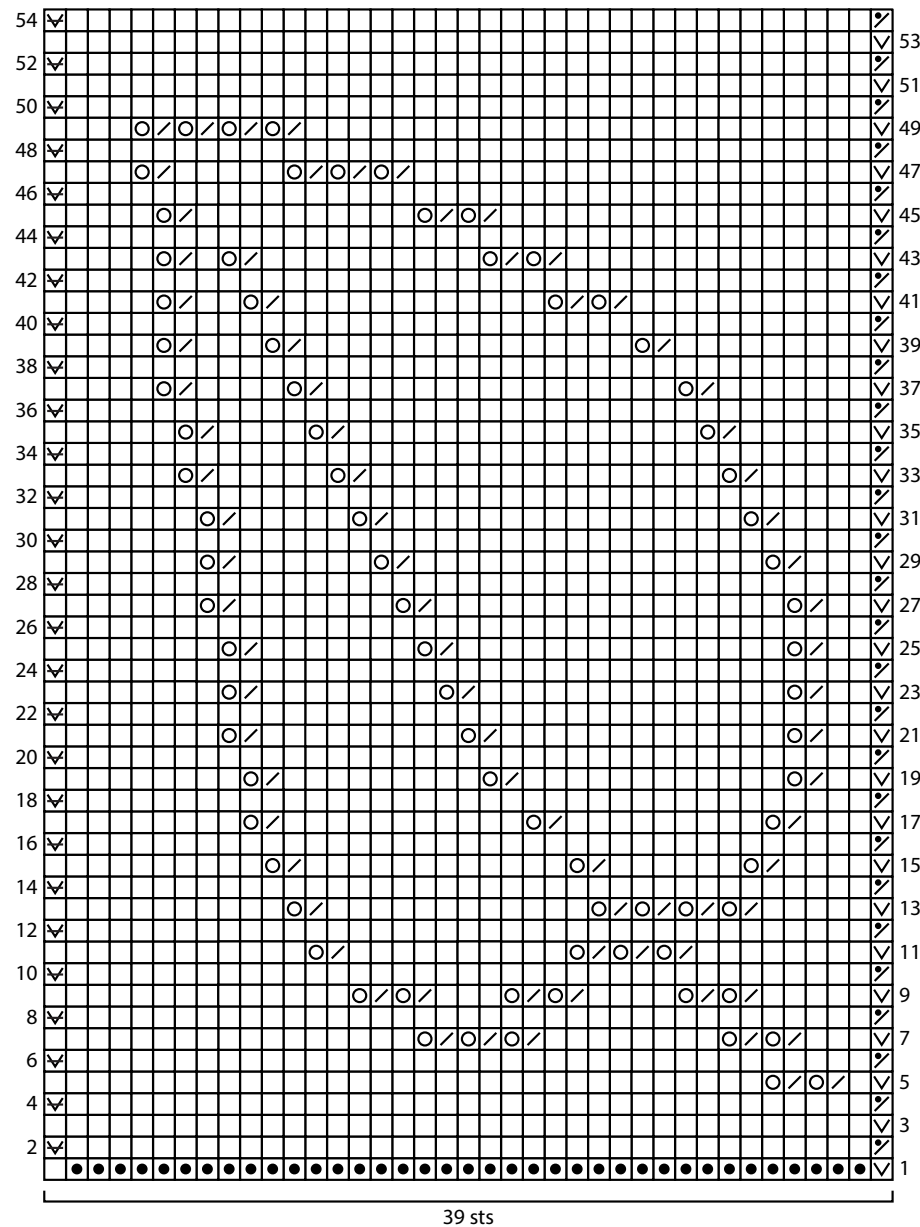




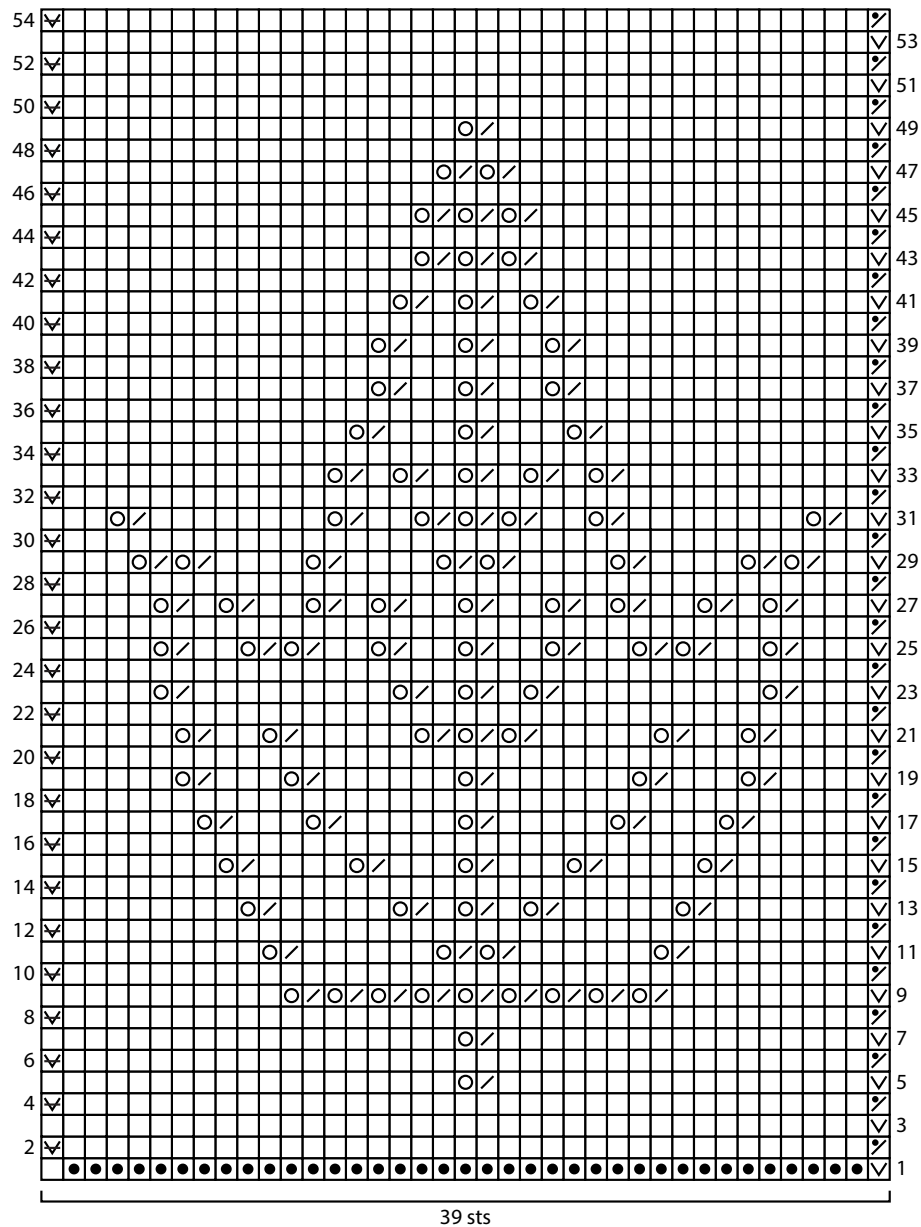
Leaf I



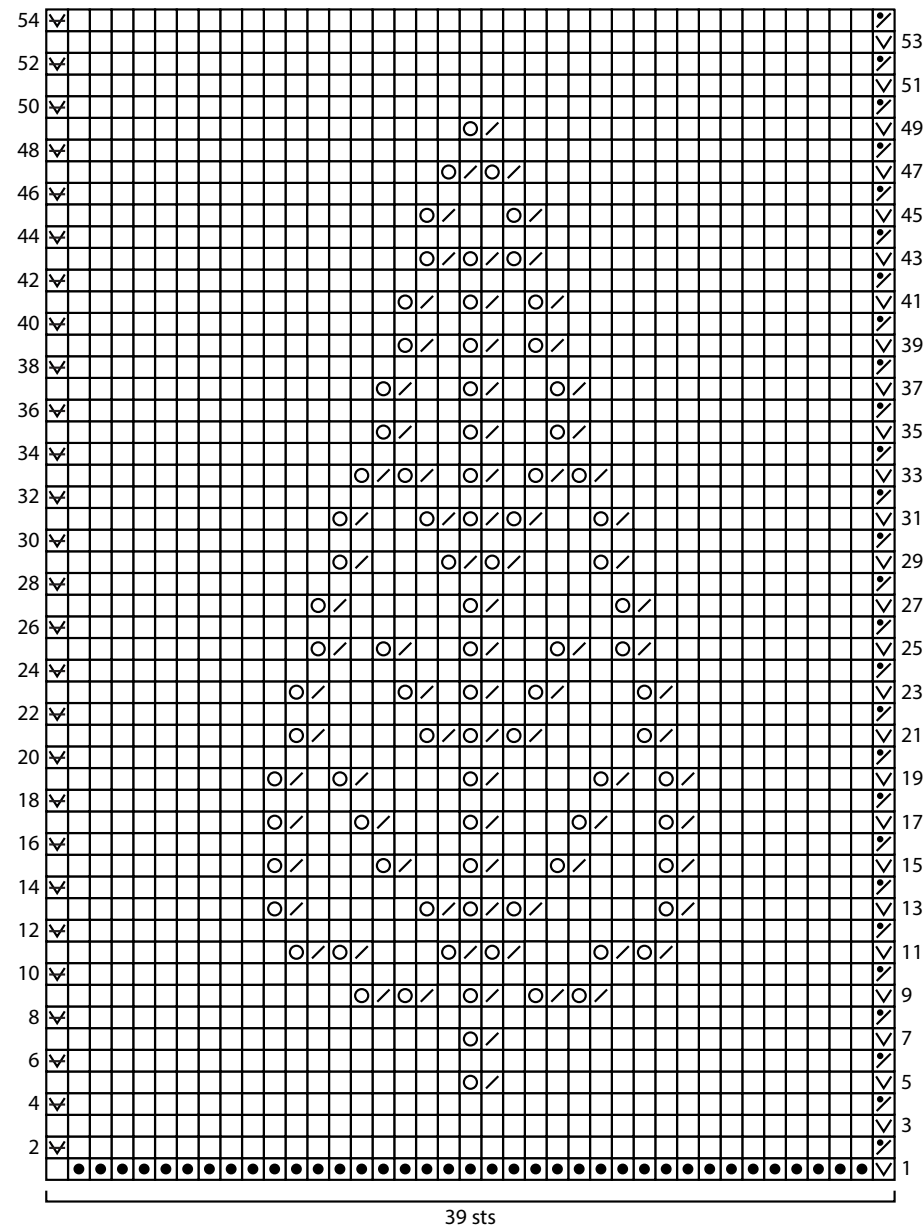
Leaf II



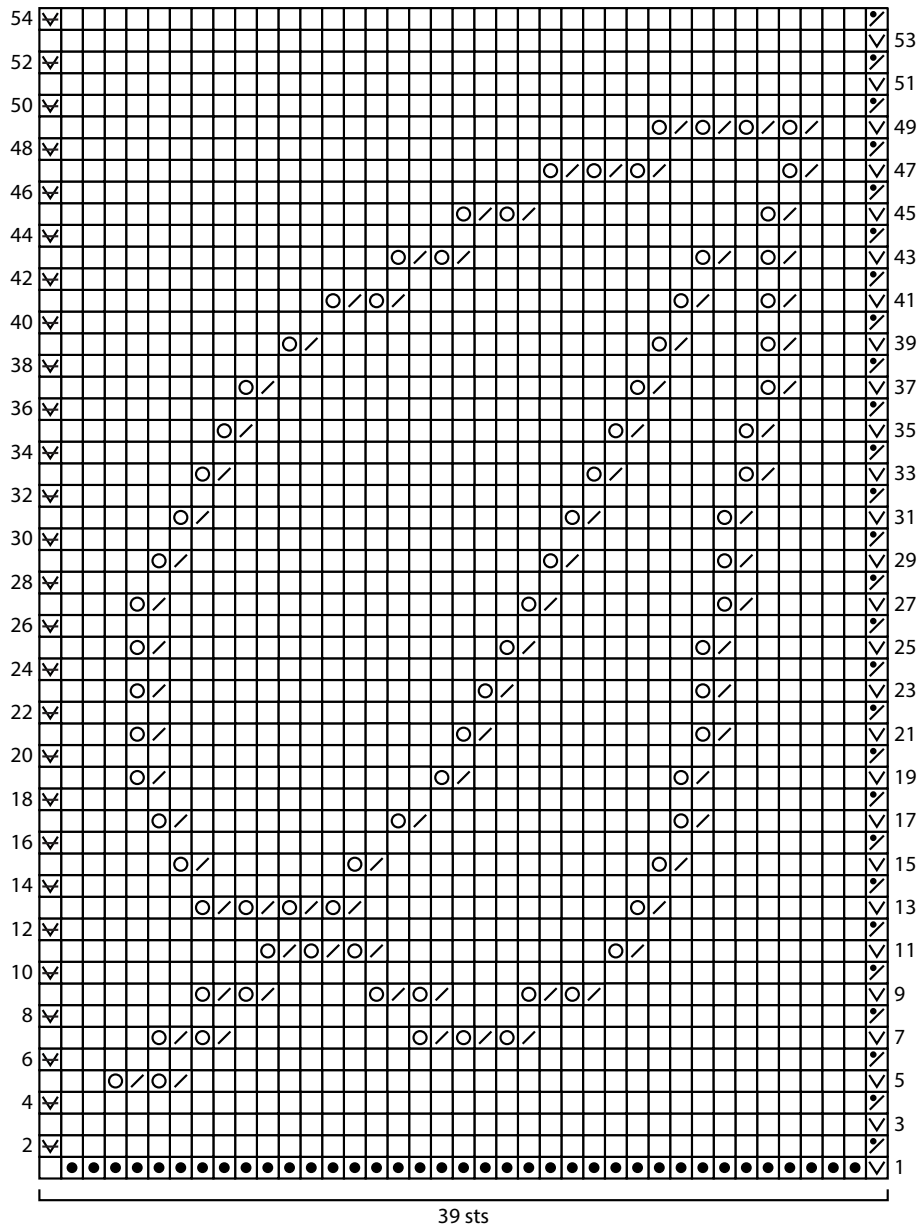
Leaf III



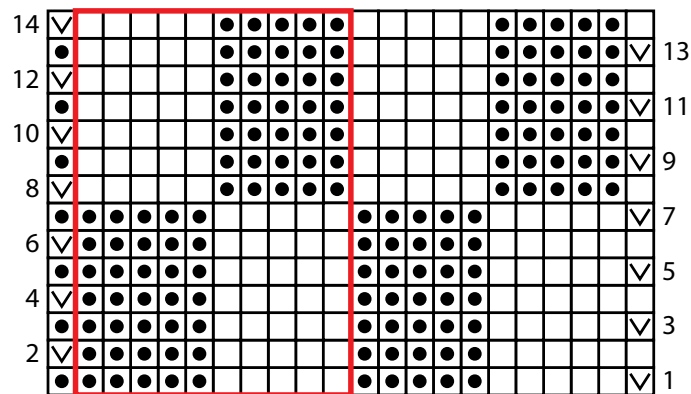
Leaf IV



## Leaf V



## Basketweave Pattern



### Key

- ☐ knit on right side, purl on wrong side
- ☒ purl on right side, knit on wrong side
- ☒ yarn over
- ☒ k2tog (knit 2 stitches together)
- ☒ sl 1 as if to knit
- ☒ sl 1 as if to purl
- ☒ Join as you go: Slip 1 as if to purl, purl next edge st of previous piece, pass slipped st over purl st and off needle.