



KNIT
SKILL LEVEL
EASY

Designed by Diane Moyer



What you will need:

RED HEART® Sweet™: 6 balls 13
Ivory

Susan Bates® Knitting Needles:
12.75 mm [US 17] 29" [73.5 cm]
circular needle

Row counter (optional), yarn
needle

GAUGE: 5 sts = 4" [10 cm]; 8
rows = 4" [10 cm]. **CHECK
YOUR GAUGE. Use any size
needles to obtain the gauge.**



RED HEART® Sweet™,
Art. E823 available in
solid color 7oz (200g),
89yd (81m) balls

Heavenly Throw

*You'll love the softness of this chenille
yarn as you relax with it each evening. The jumbo
yarn weight is great if you want a faster throw
to knit and shows off the basket weave pattern
wonderfully. We've shown it in a neutral color that
is perfect for gift giving.*

SHOP KIT

**Throw measures about 44 x 53" [112 x
134.5 cm].**

Notes

1. Throw is worked, back and forth in rows,
in a pattern of knit and purl rectangles.
2. Use a row counter to help ensure that
each repeat contains the same number
of rows.
3. The long tail cast on requires 3½ yards for
the tail.
4. Cast on and bind off loosely.

THROW

Using long tail cast on, cast on 55 sts.

Lower Border

Knit 3 rows.

Begin Pattern

Row 1 (right side): K3, *k7, p7; repeat from *
to last 10 sts, k10.

Row 2 (wrong side): K3, *p7, k7; repeat
from * to last 10 sts, p7, k3.

Rows 3–12: Repeat Rows 1 and 2 five times.

Row 13 (right side): K3, *p7, k7; repeat
from * to last 10 sts, p7, k3.

Row 14 (wrong side): K3, *k7, p7; repeat
from * to last 10 sts, k10.

Rows 15–18: Repeat Rows 13 and 14 twice.

Row 19–90: Repeat Rows 1–18 four more
times.

Rows 91–102: Repeat Rows 1–12.

Top Border

Knit 3 rows.

Bind off as if to knit.

FINISHING

Weave in ends.



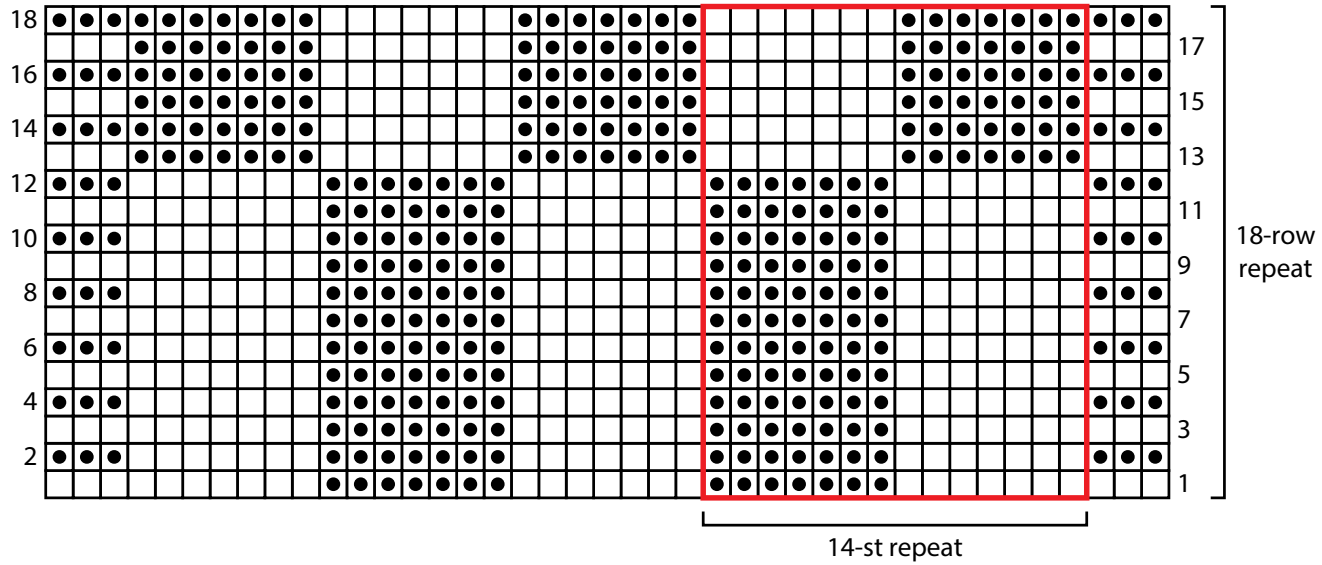
ABBREVIATIONS

k = knit; **p** = purl; **st(s)** = stitch(es); * =
repeat whatever follows the * as indicated.

See chart on next page...



2015 & 2016
WOMEN'S CHOICE AWARD™
AMERICA'S MOST RECOMMENDED
YARN BRAND



Key

- knit on RS, purl on WS
- purl on RS, knit on WS
- repeat