



KNIT | SKILL LEVEL: EASY

ABBREVIATIONS

Approx = Approximately

Beg = Beginning

C4B = Slip next 2 stitches onto cable needle and leave at back of work. K2, then K2 from cable needle

K = Knit

P = Purl

Pat = Pattern

Rep = Repeat

Rnd(s) = Round(s)

RS = Right side

WS = Wrong side

MEASUREMENTS

Approx 42" x 64" [106.5 x 162.5 cm]

GAUGE

15 sts and 20 rows = 4" [10 cm] in stocking stitch.

INSTRUCTIONS

Cast on 164 sts. **Do not** join in rnd. Working back and forth across needle in rows, knit 14 rows (garter st), noting 1st row is WS and ending on a RS row.

Proceed in pat as follows:

See Diagram on page 2.

1st row: (WS). K12. P4. *K4. P4. Rep from * to last 12 sts. K12.

2nd row: Knit.

3rd row: K12. P4. *K4. P4. Rep from * to last 12 sts. K12.

4th to 7th rows: As 2nd and 3rd rows twice more.

8th row: K12. C4B. *K4. C4B. Rep from * to last 12 sts. K12.

Rep 1st to 8th rows until work from beg measures approx 62" [157.5 cm], ending on 7th row of pat.

Knit 14 rows. Cast off knitwise (WS).

MATERIALS

Red Heart® Super Saver® (7 oz/198 g; 364 yds/333 m)

Aran (0313)

6 balls

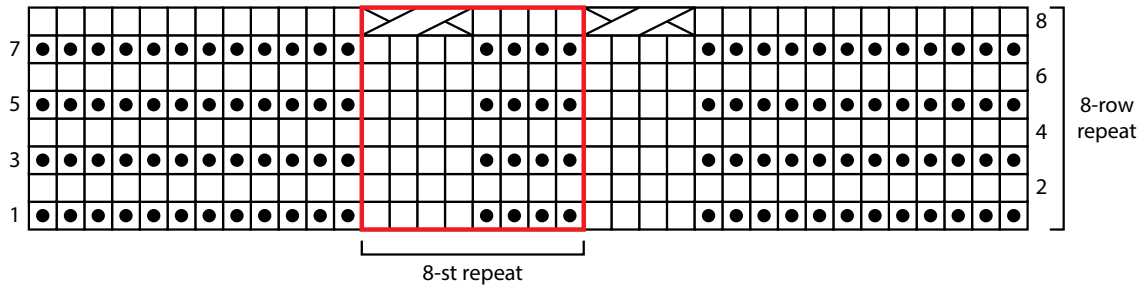
OR

Red Heart® Super Saver® Jumbo™ (14 oz/396 g; 744 yds/681 m)

Aran (0313)

3 balls

Size U.S. 9 (5.5 mm) Susan Bates® Silvalume® circular knitting needle 36" [91.5 cm] long **or size needed to obtain gauge.** Susan Bates® cable needle. Tapestry needle.



Key

- knit on RS, purl on WS
- purl on RS, knit on WS
- C4B
 C4B

